

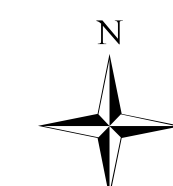


# Ferebee & Tellico Fires

## Ops Map

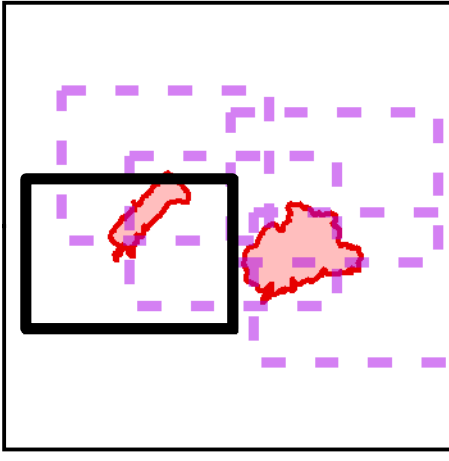
### Div MM / PP / BB

11/9/2016  
Day Shift

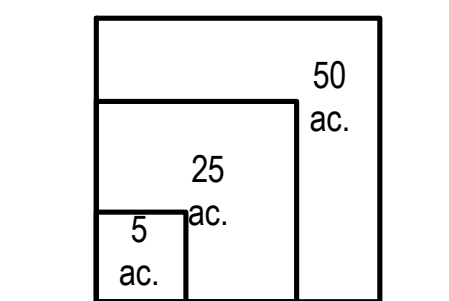


- Division
- Uncontrolled Fire Edge
- Completed Dozer Line
- Completed Line
- Completed Hand Line
- Road as Completed Line
- Drop Point
- Trail
- Trail of Tears
- Structure

### Index Map



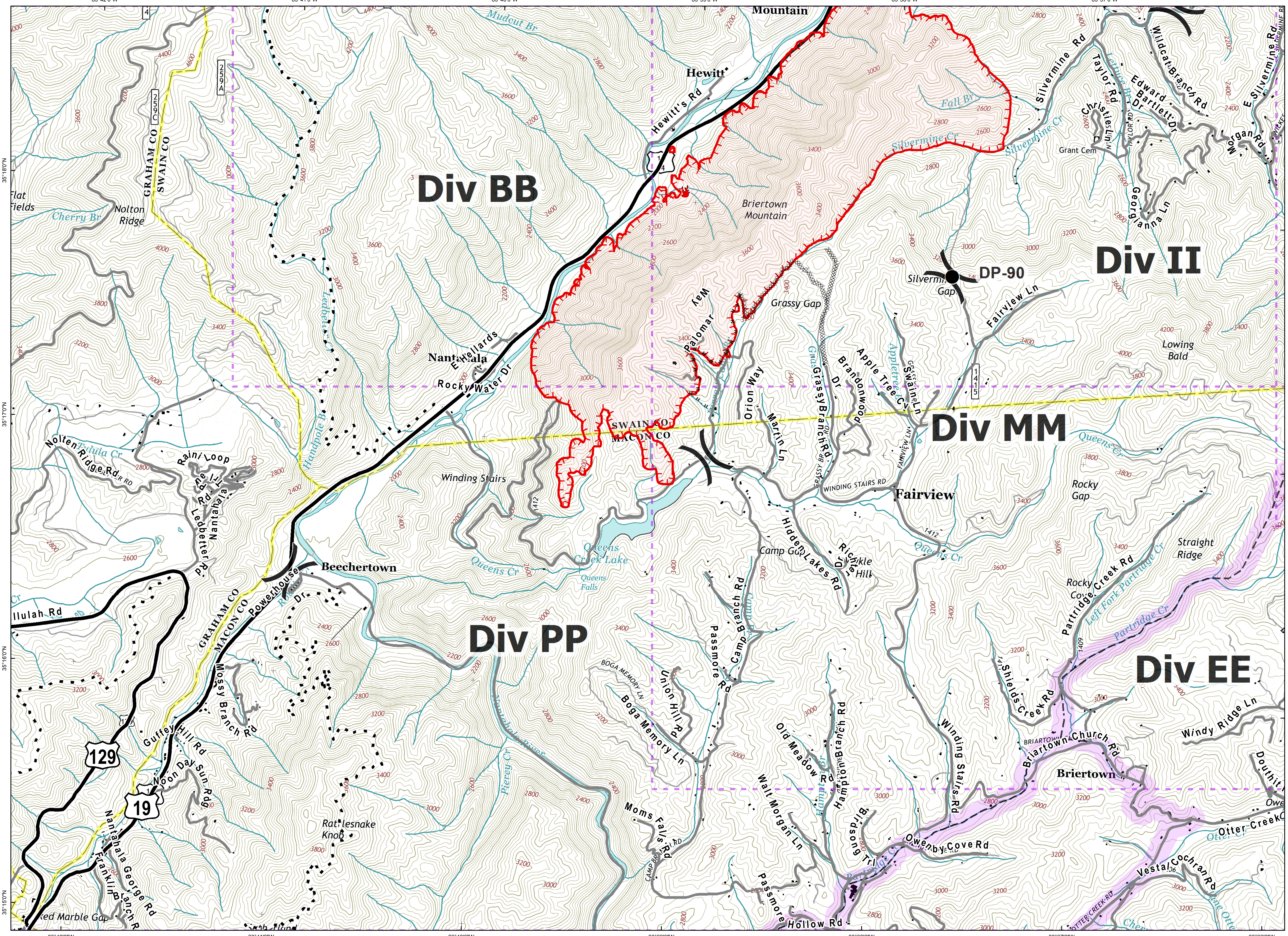
Download a GeoPDF



Information shown is based on the best available data at the time of map production.

Latest intel: 20161107 @ 2254

20161108 @ 0619  
Map Datum: NAD83 Feet  
Author: A. Thompson, GISS



Document Name: ops\_FerebeeTellico\_20161109\_2330\_ansi\_d\_land\_NCNCNF160299\_NCNCNF160280\_1109day