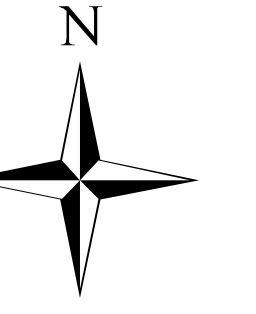




# Boteler Fire

11/10/2016  
Day Shift

Acres as of 11/9/16  
Boteler Fire 4,739 ac  
Buck Creek 8 ac



## Briefing Map

NC-NCF-160247

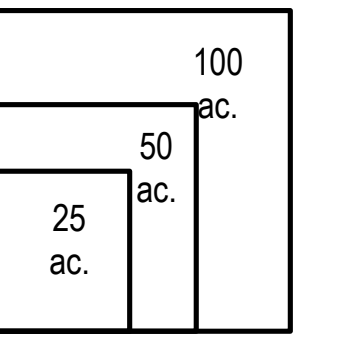
- ( ) Division
- Drop Point
- ⊗ Fire Origin
- Helispot
- Ⓡ Repeater
- Ⓢ Water Source
- ▬ Uncontrolled Fire Edge
- ▬ Completed Dozer Line
- ▬ Completed Line
- · · · · Hand Line
- · · · · Road as Completed Line
- · · · · Planned Secondary Line
- × · × · × Proposed Dozer Line
- ▬ Bladed Road
- · · · · Power Line
- - - - - Trail
- ▭ Containment Perimeter
- ▭ Structure Footprints

### IR flown 2212, 11-9-2016

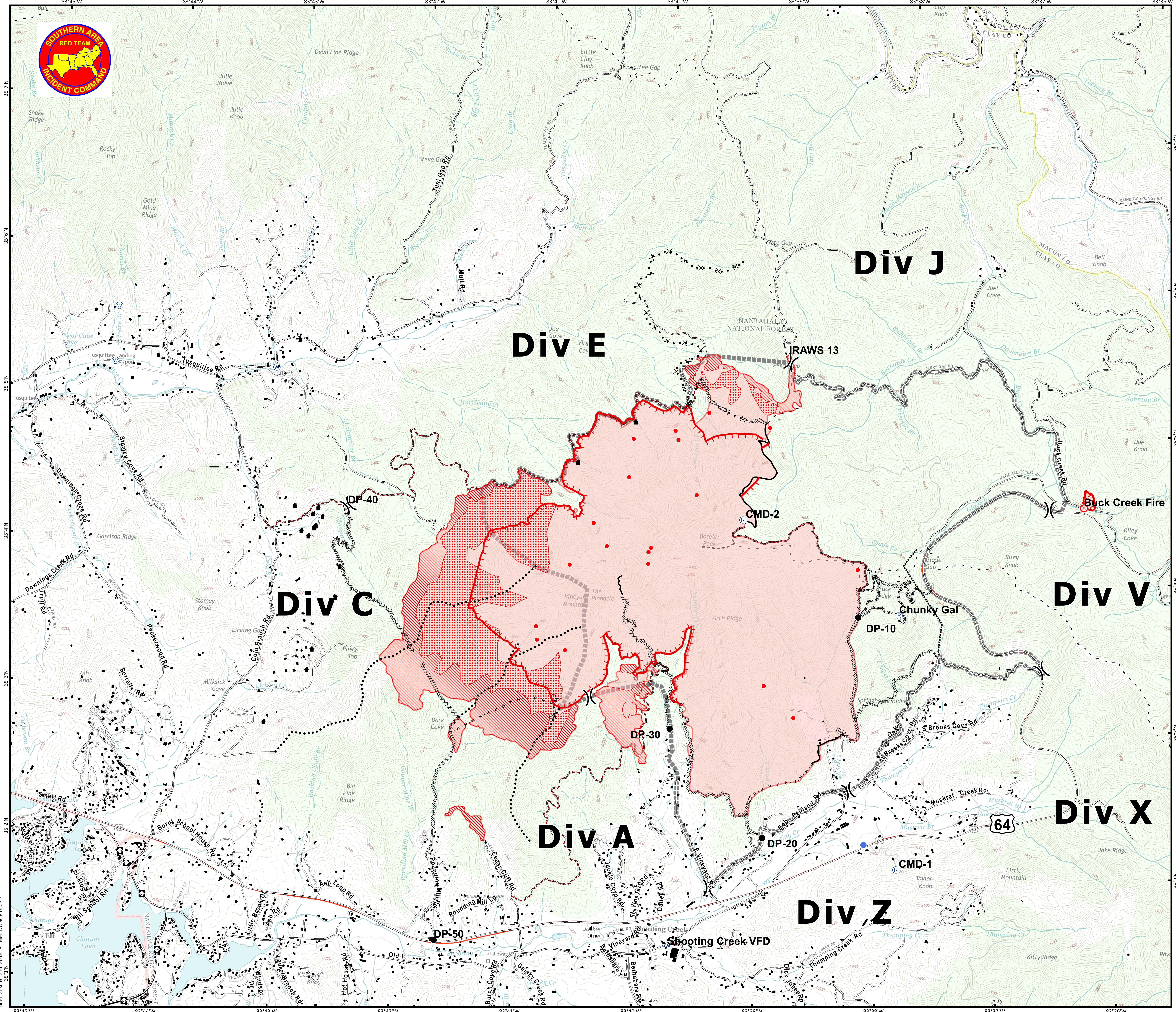
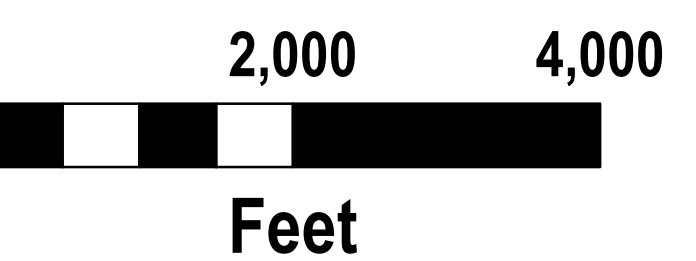
- 11-10-2016 Isolated Heat Sources
- ▨ 11-10-2016 Scattered Heat
- ▨ 11-10-2016 Intense Heat
- ▨ 11-10-2016 Heat Perimeter



Download a GeoPDF



11/10/2016 6:26:47 AM  
NC StatePlane NAD83 Feet  
D. Paris, GISS(T)



brief\_ansi\_e\_land\_2016\_Boteler\_NCNC160247