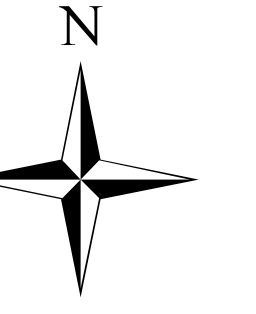




Boteler Fire

11/10/2016
Day Shift

Acres as of 11/9/16
Boteler Fire 3,389 ac
Buck Creek 8 ac



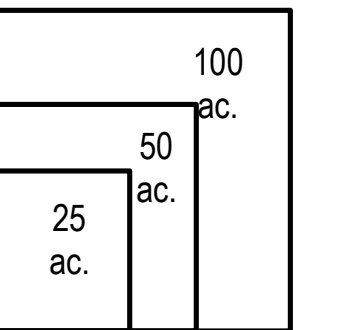
Briefing Map

NC-NCF-160247

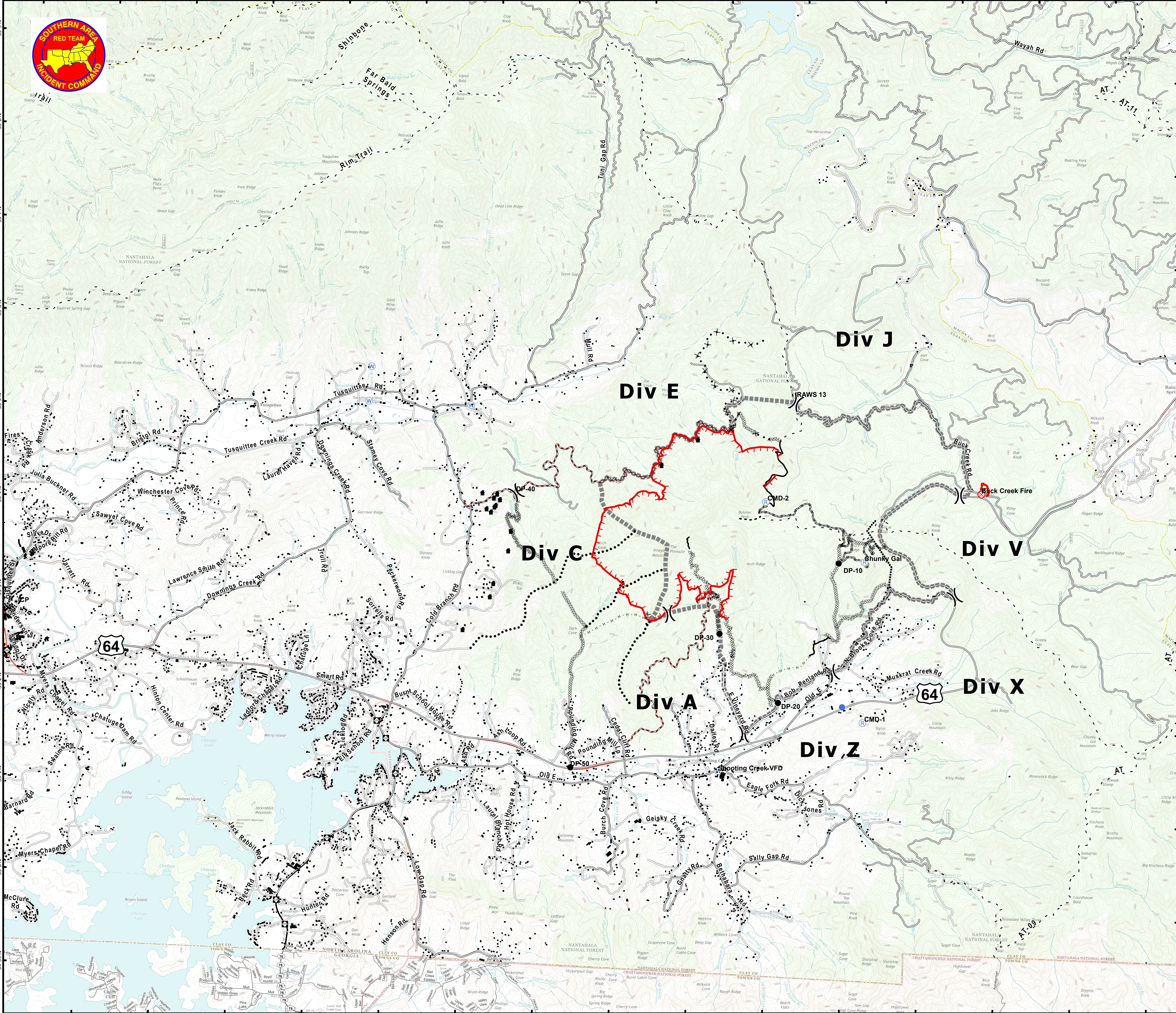
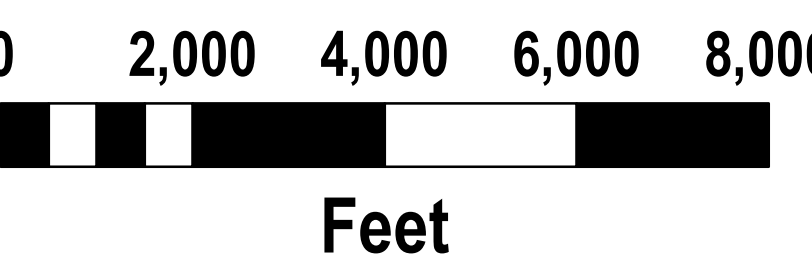
- Division
- Drop Point
- Fire Origin
- Helispot
- Repeater
- Water Source
- Uncontrolled Fire Edge
- Completed Dozer Line
- Completed Line
- Hand Line
- Road as Completed Line
- Planned Secondary Line
- Proposed Dozer Line
- Bladed Road
- Power Line
- Trail
- Containment Perimeter
- Structure Footprints



Download a GeoPDF



11/9/2016 10:10:05 PM
NC StatePlane NAD83 Feet
D. Paris, GISS(T)



brief_ansi_e_land_2016_Boteler_NCNCNF160247