

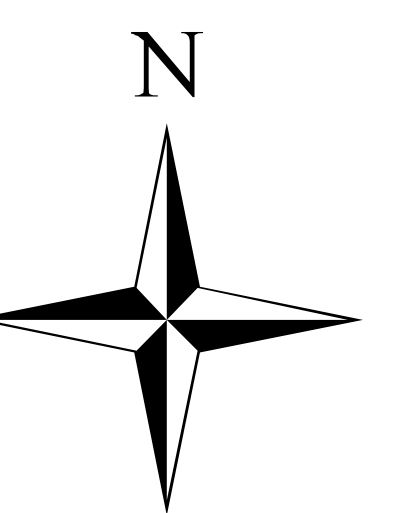
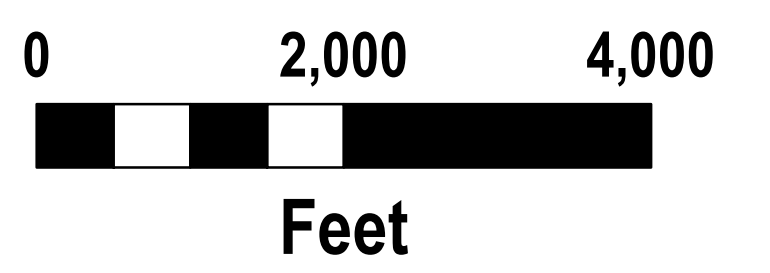


# Boteler Fire

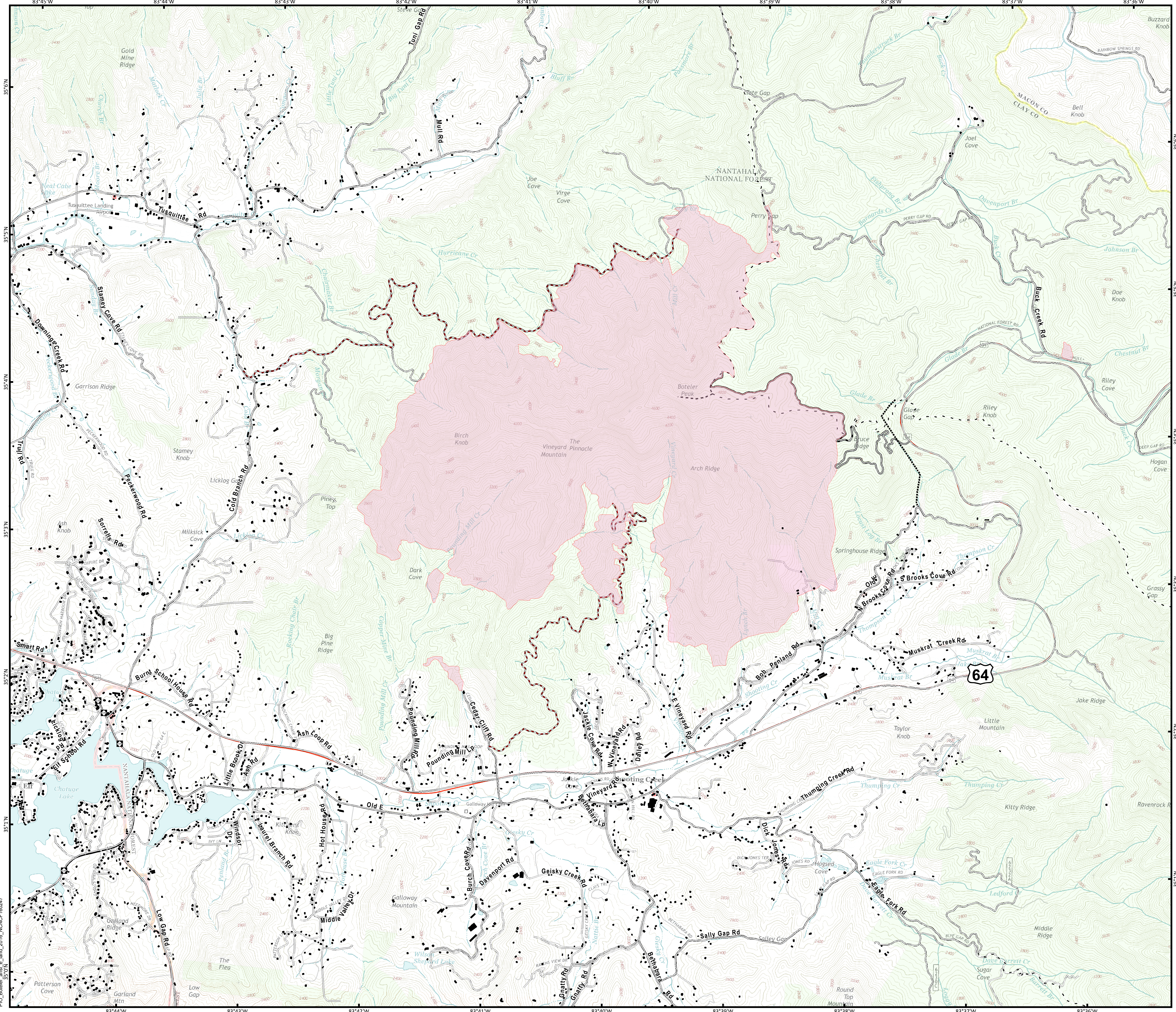
11/11/2016  
Day Shift

Acres as of 11/10/16  
Boteler Fire 4,739 ac  
Buck Creek 8 ac

- Bladed Road
- Power Line
- Trail
- Structure Footprints
- Fire Perimeter



11/10/2016 9:52:41 PM  
NC StatePlane NAD83 Feet  
D. Paris, GISS(T)



PCO\_Boteler\_and\_e\_land\_2016\_NCNCF160247