

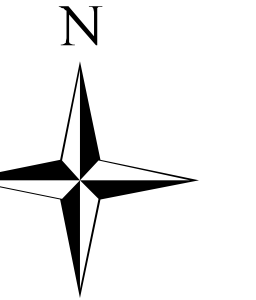


Boteler Fire

11/11/2016
Day Shift

Acres as of 11/10/16
Boteler Fire 6,895 ac
Buck Creek 8 ac

Happy Veteran's Day



Briefing Map

NC-NCF-160247

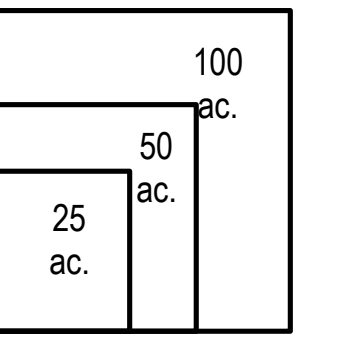
- Division
- Drop Point
- Fire Origin
- Helispot
- Repeater
- Water Source
- Uncontrolled Fire Edge
- Completed Dozer Line
- Completed Line
- Hand Line
- Road as Completed Line
- Planned Secondary Line
- Proposed Dozer Line
- Bladed Road
- Power Line
- Trail
- Containment Perimeter
- Structure Footprints

IR flown 1942, 11-10-2016

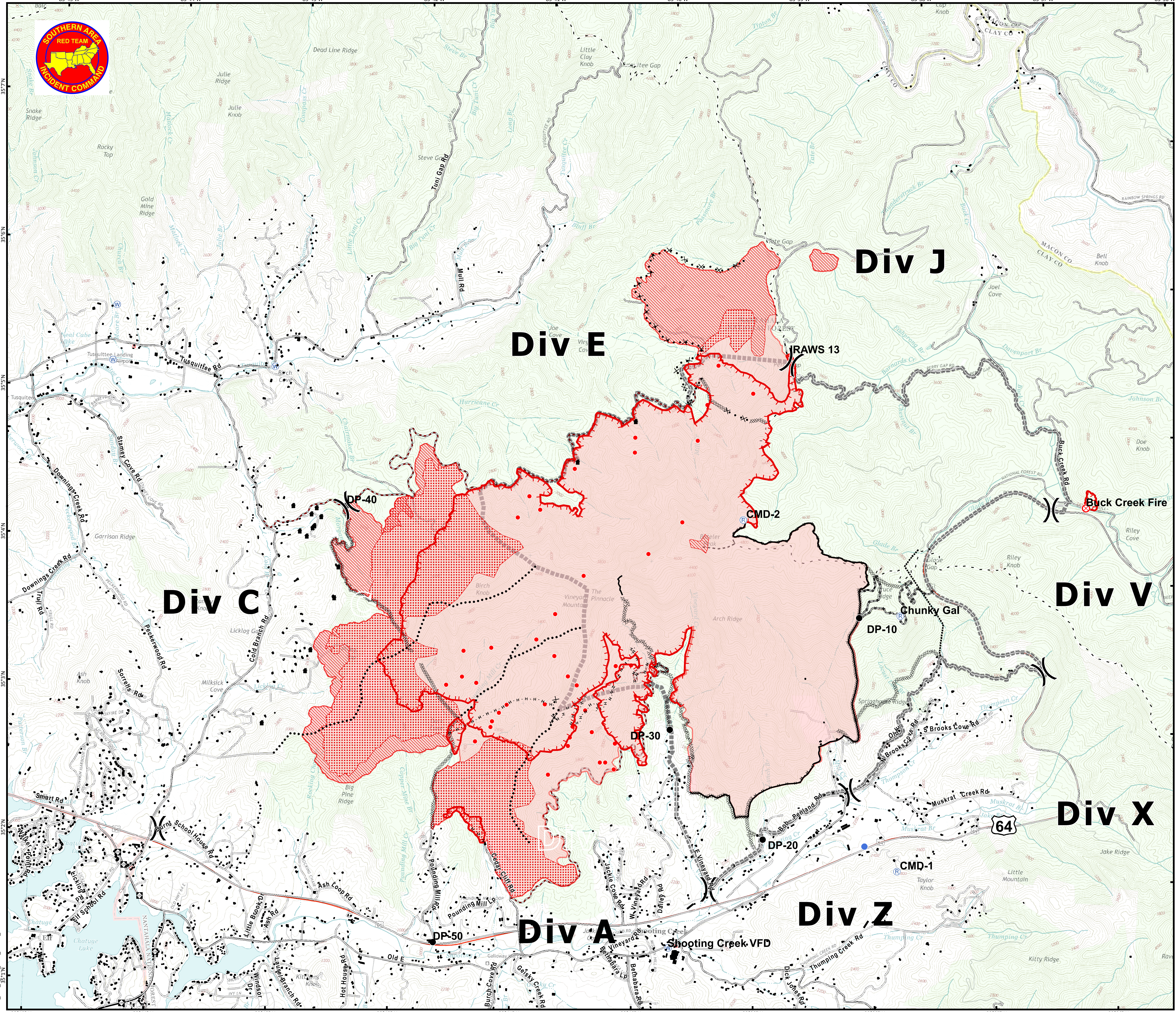
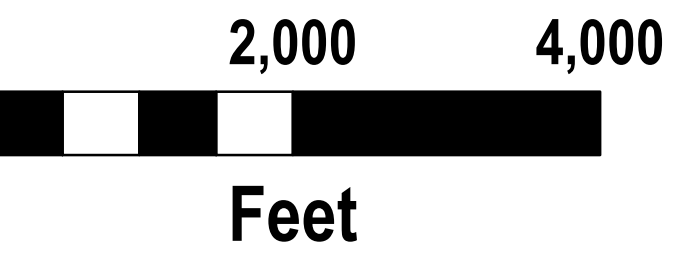
- 11-11-2016 Isolated Heat Sources
- 11-11-2016 Scattered Heat
- 11-11-2016 Intense Heat
- 11-11-2016 Heat Perimeter



Download a GeoPDF



11/11/2016 6:09:41 AM
NC StatePlane NAD83 Feet
D. Paris, GISS(T)



brief_ansi_e_land_2016_Boteler_NCNC160247