

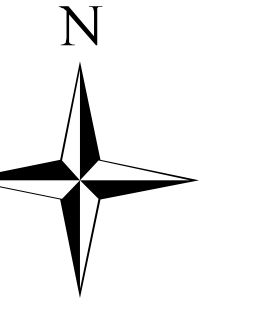


# Boteler Fire

11/11/2016  
Day Shift

Acres as of 11/10/16  
Boteler Fire 4,767 ac  
Buck Creek 8 ac

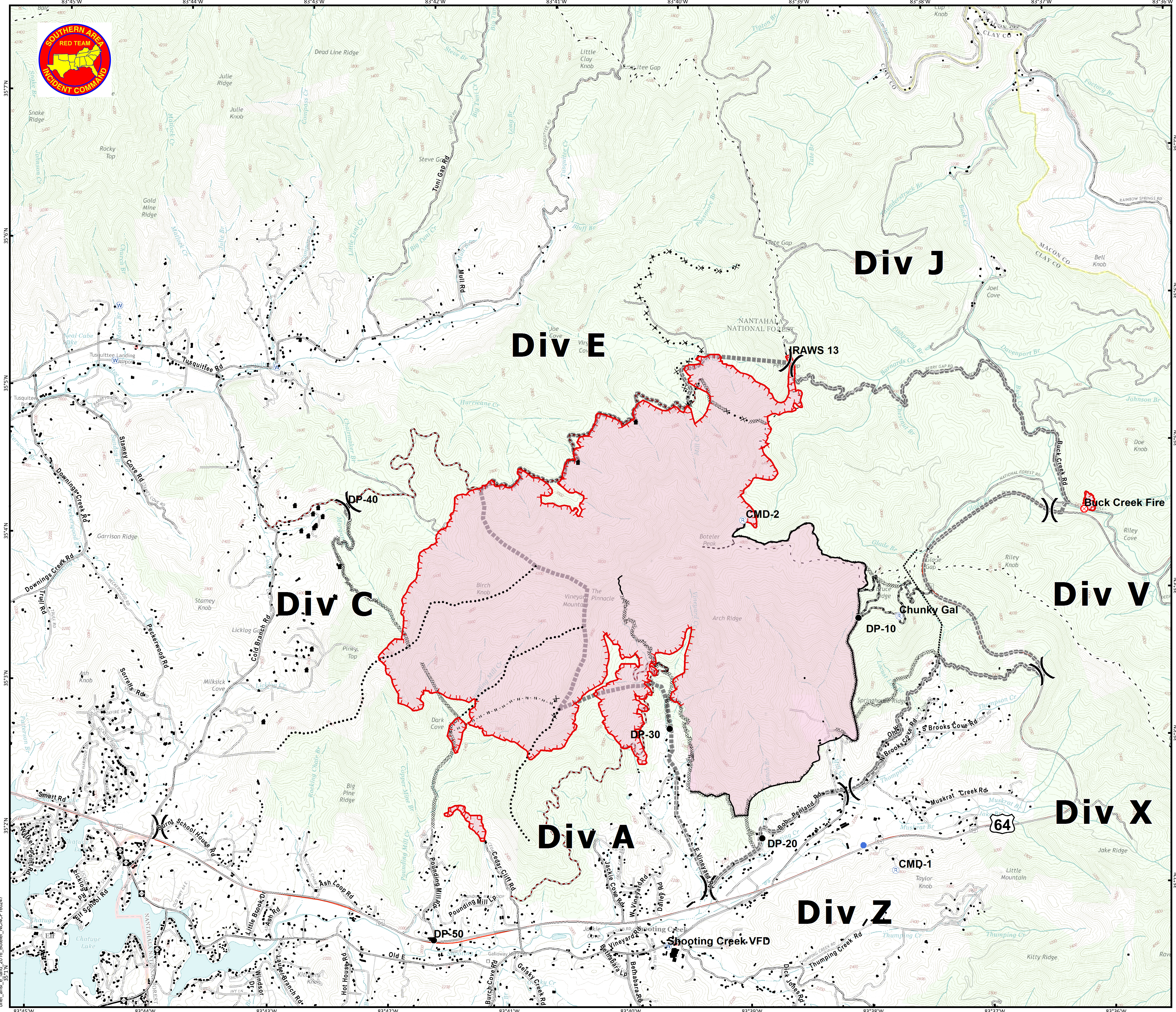
Happy Veteran's Day



## Briefing Map

NC-NCF-160247

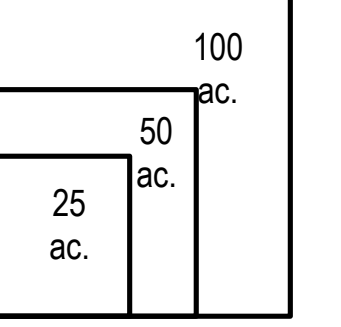
- Division
- Drop Point
- Fire Origin
- Helispot
- Repeater
- Water Source
- Uncontrolled Fire Edge
- Completed Dozer Line
- Completed Line
- Hand Line
- Road as Completed Line
- Planned Secondary Line
- Proposed Dozer Line
- Bladed Road
- Power Line
- Trail
- Containment Perimeter
- Structure Footprints



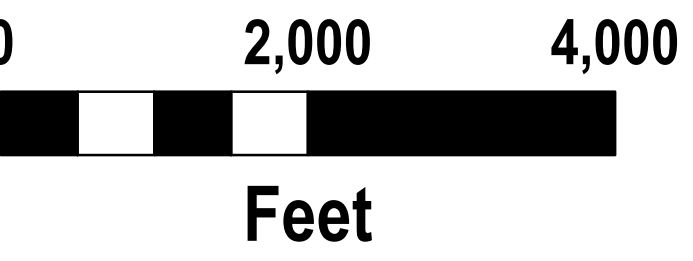
IR flown 2212, 11-9-2016



Download a GeoPDF



11/10/2016 7:49:51 PM  
NC StatePlane NAD83 Feet  
D. Paris, GISS(T)



brief\_ansi\_e\_land\_2016\_Boteler\_NCNC160247