











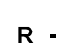










Boteler Fire

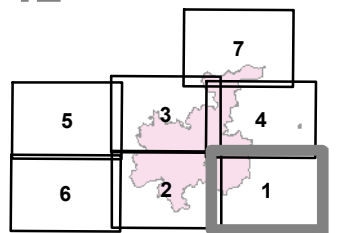
NC-NCF-160247

IAP Tile Div X/Z

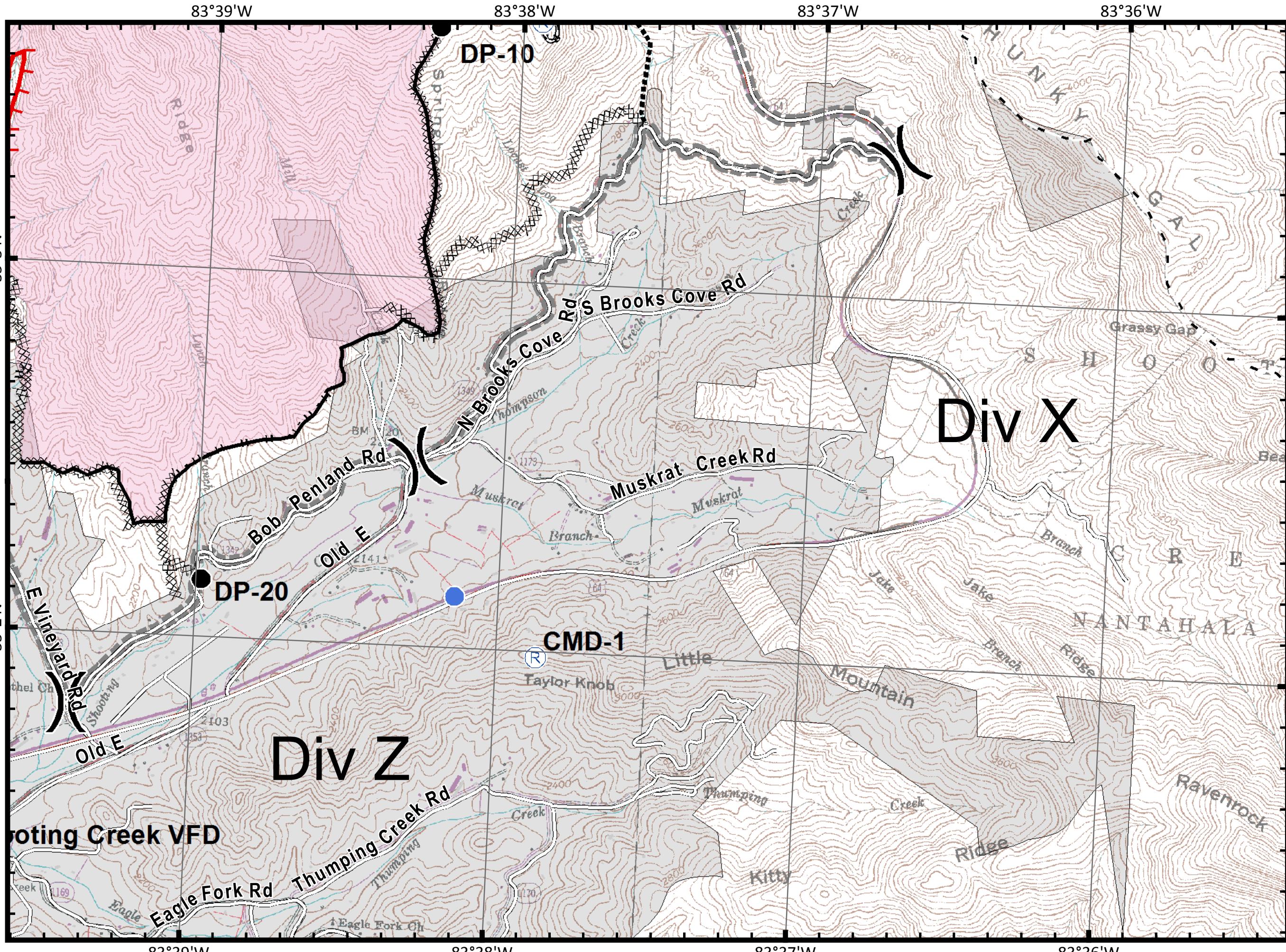
11/12/2016
Day Shift

-  Drop Point
-  Fire Origin
-  Helispot
-  Repeater
-  Water Source
-  Fire Station
-  Division

-  Uncontrolled Fire Edge
-  Completed Dozer Line
-  Completed Line
-  Hand Line
-  Road as Completed Line
-  Planned Secondary Line
-  Proposed Dozer Line
-  Roads_BotelerArea selection
-  NantahalaNationalForest_POI
-  Bladed Road
-  Power Line
-  Trail
-  Trails
-  Containment Perimeter



Feet



Boteler Fire

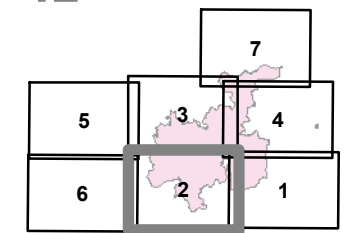
NC-NCF-160247

IAP Tile Div A/C

11/12/2016
Day Shift

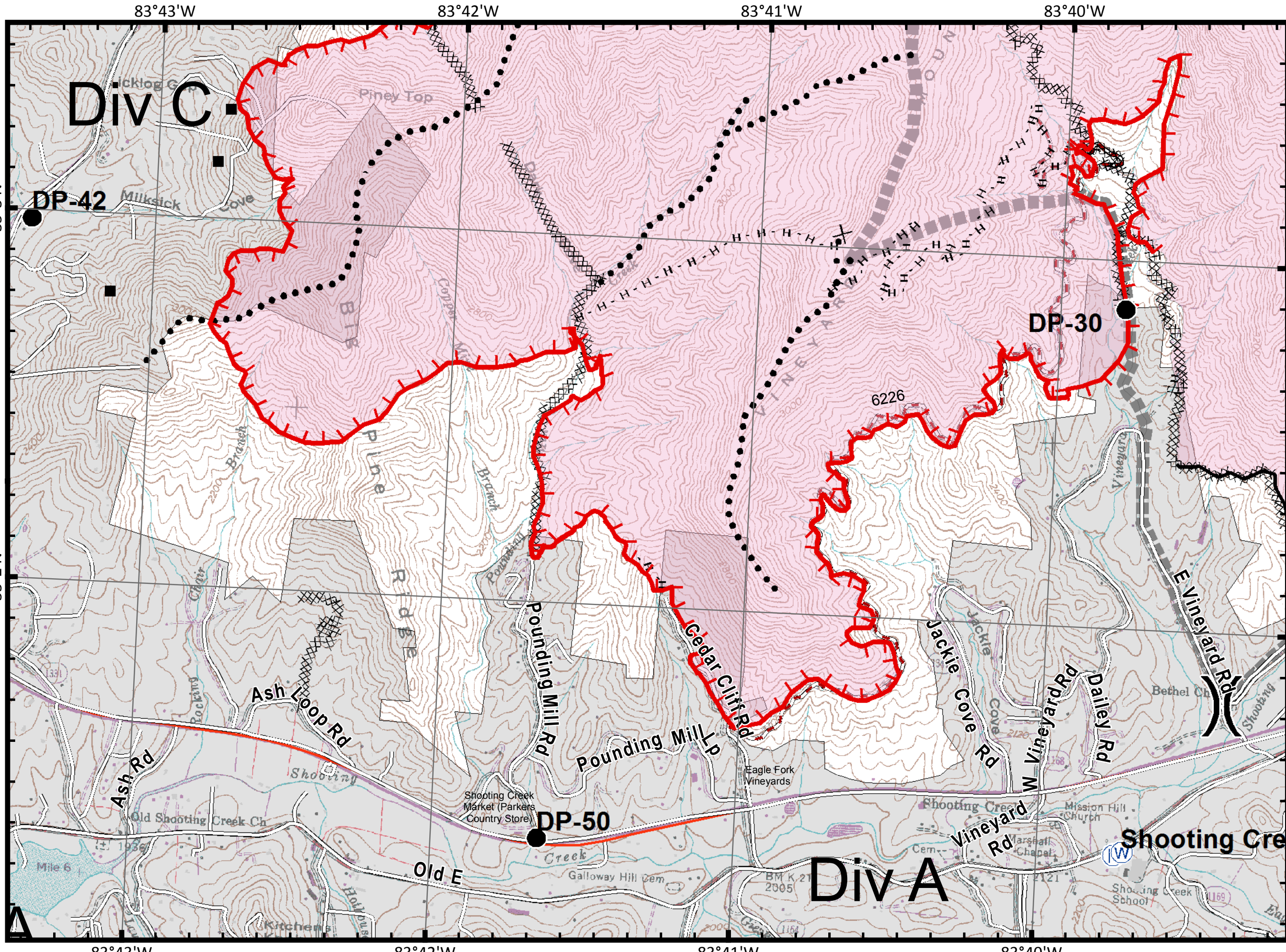
- Drop Point
- ⊗ Fire Origin
- Helispot
- Ⓡ Repeater
- Ⓜ Water Source
- ⓕ Fire Station
-) Division

- ▬ Uncontrolled Fire Edge
- ⊗ Completed Dozer Line
- ▬ Completed Line
- H - Hand Line
- R - Road as Completed Line
- Planned Secondary Line
- ⊗ Proposed Dozer Line
- - Roads_BotelerArea selection
- NantahalaNationalForest_POI
- ▬ Bladed Road
- ▬ Power Line
- ▬ Trail
- ▬ Trails
- Ⓜ Containment Perimeter



Feet

11/11/2016 7:48:30 PM
NC StatePlane NAD83 Feet
C. Roberts, GISS



IAP_8x11_land_2016_Boteler_NONCF160247

Boteler Fire

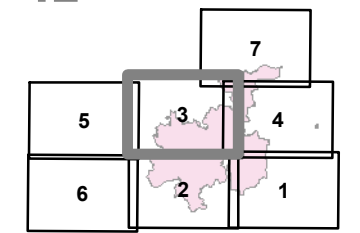
NC-NCF-160247

IAP Tile Div C/E

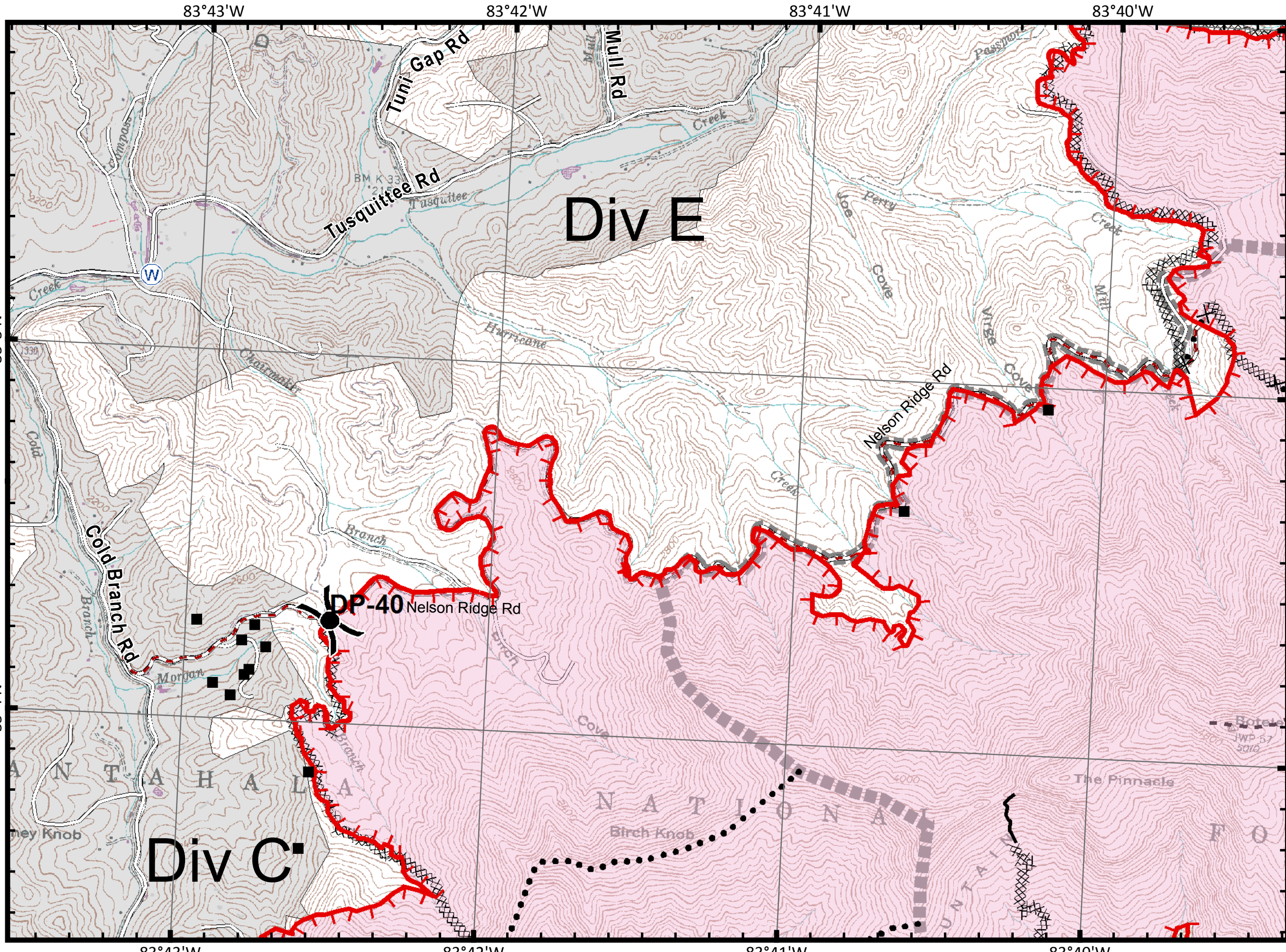
11/12/2016
Day Shift

- Drop Point
- ⊗ Fire Origin
- Helispot
- Ⓡ Repeater
- Ⓜ Water Source
- Ⓢ Fire Station
-) Division

- ▬ Uncontrolled Fire Edge
- ⊗ Completed Dozer Line
- ▬ Completed Line
- H - Hand Line
- R - Road as Completed Line
- Planned Secondary Line
- ⊗ Proposed Dozer Line
- - Roads_BotelerArea selection
- NantahalaNationalForest_POI
- ▬ Bladed Road
- ▬ Power Line
- ▬ Trail
- ▬ Trails
- ▬ Containment Perimeter



Feet



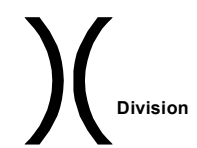
Boteler Fire



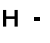











NC-NCF-160247

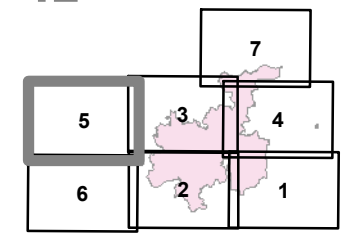
IAP Tile Div C/E

11/12/2016
Day Shift

-  Drop Point
-  Fire Origin
-  Helispot
-  Repeater
-  Water Source
-  Fire Station

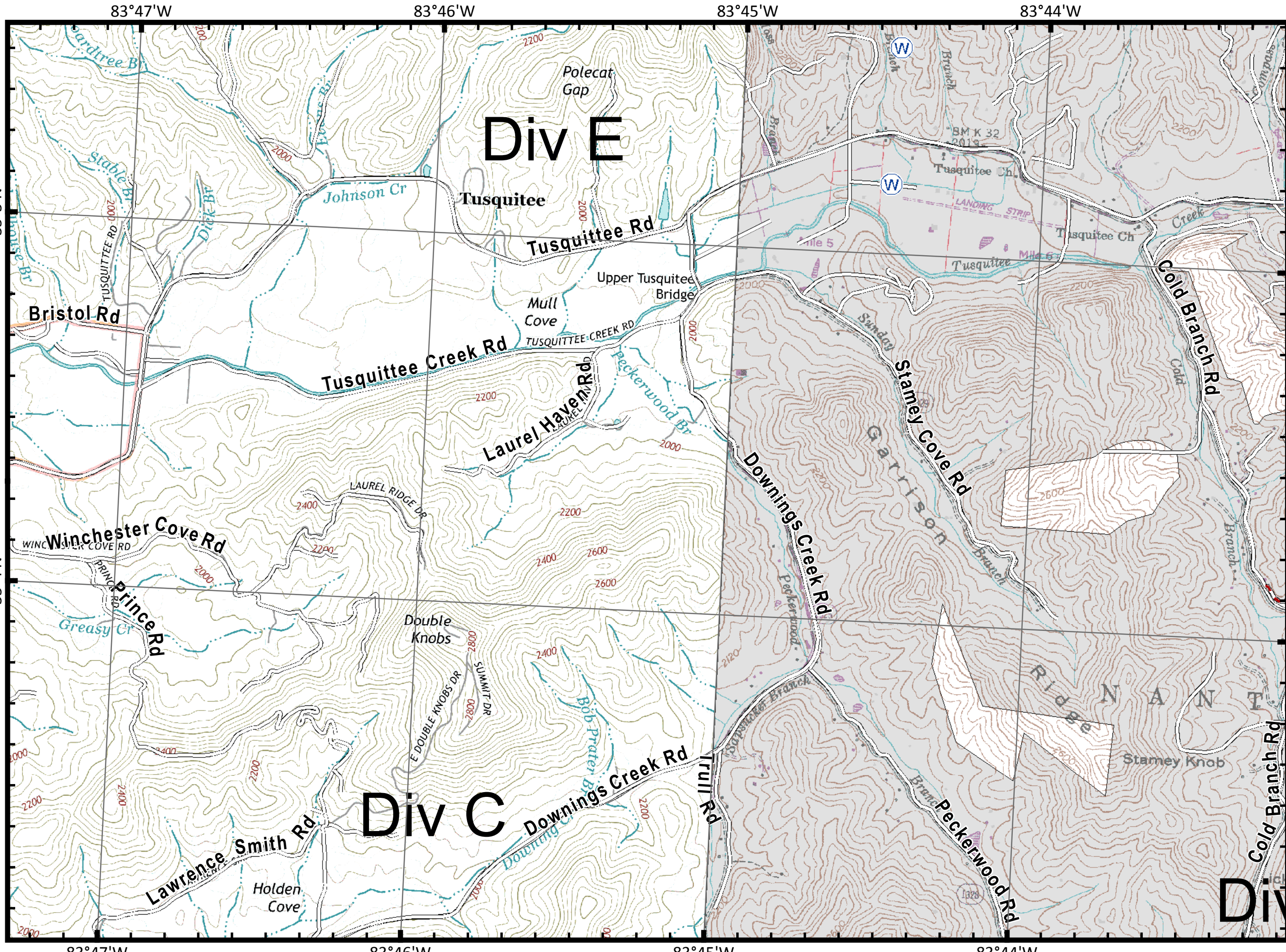


-  Uncontrolled Fire Edge
-  Completed Dozer Line
-  Completed Line
-  Hand Line
-  Road as Completed Line
-  Planned Secondary Line
-  Proposed Dozer Line
-  Roads_BotelerArea selection
-  NantahalaNationalForest_POI
-  Bladed Road
-  Power Line
-  Trail
-  Trails
-  Containment Perimeter



Feet

11/11/2016 7:48:57 PM
NC StatePlane NAD83 Feet
C. Roberts, GISS










IAP_8x11_land_2016_Boteler_NONCF160247



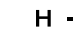






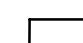




Boteler Fire

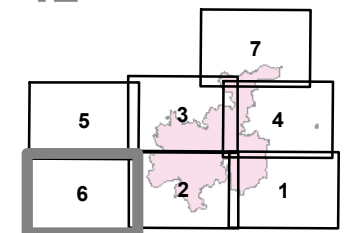
NC-NCF-160247

IAP Tile Div A/C

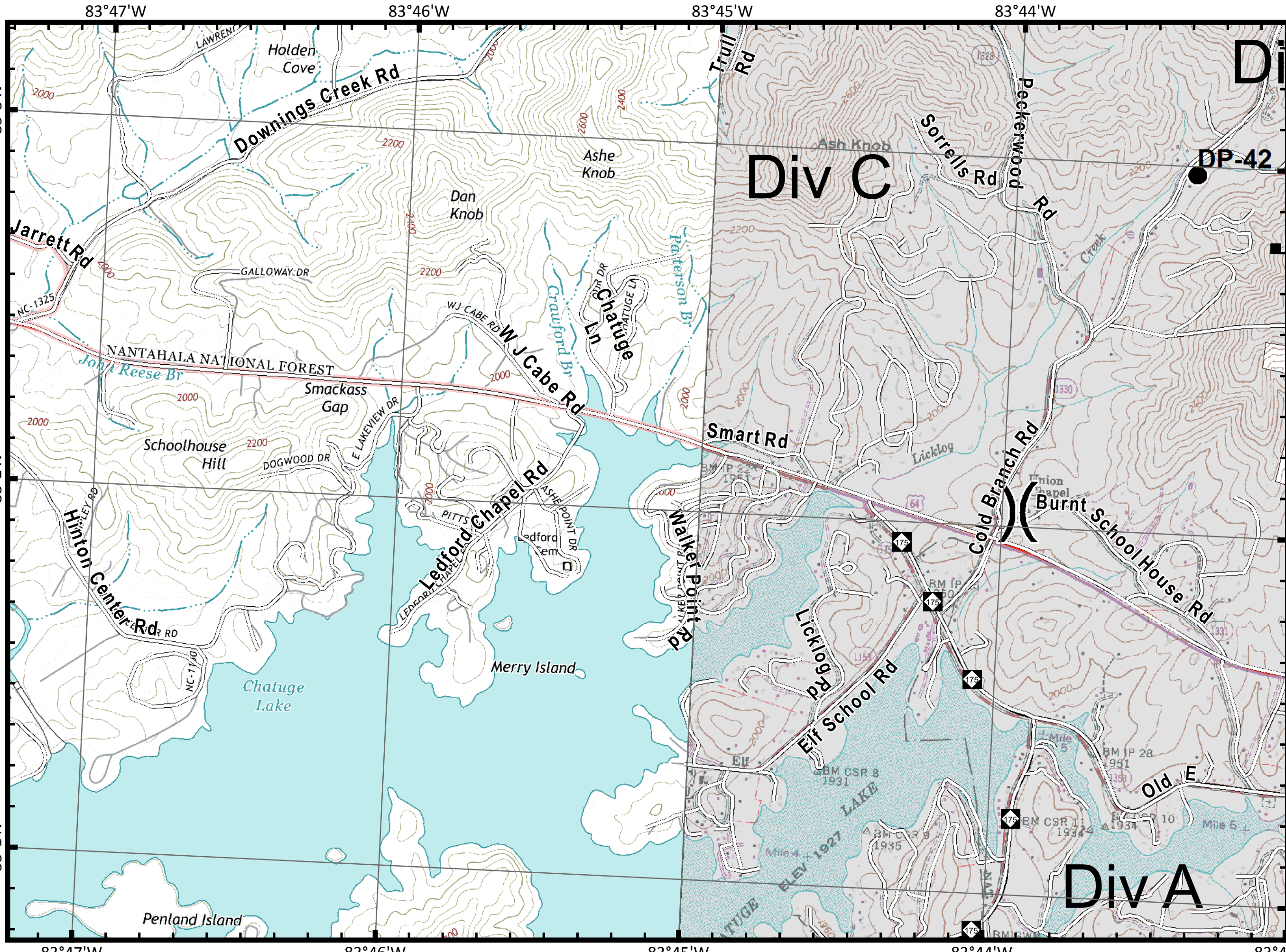
11/12/2016
Day Shift

-  Drop Point
-  Fire Origin
-  Helispot
-  Repeater
-  Water Source
-  Fire Station
-  Division

-  Uncontrolled Fire Edge
-  Completed Dozer Line
-  Completed Line
-  Hand Line
-  Road as Completed Line
-  Planned Secondary Line
-  Proposed Dozer Line
-  Roads_BotelerArea selection
-  NantahalaNationalForest_POI
-  Bladed Road
-  Power Line
-  Trail
-  Trails
-  Containment Perimeter



Feet



Div C

Div A

DP-42

IAP_8x11_land_2016_Boteler_NONCF160247








83°41'W 83°40'W 83°39'W 83°38'W 83°37'W



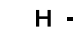






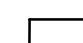




Boteler Fire

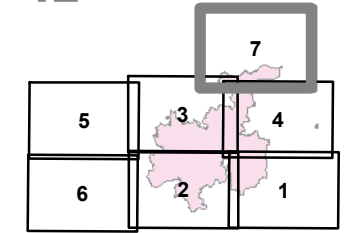
NC-NCF-160247

IAP Tile Div E/J

11/12/2016
Day Shift

-  Drop Point
-  Fire Origin
-  Helispot
-  Repeater
-  Water Source
-  Fire Station
-  Division

-  Uncontrolled Fire Edge
-  Completed Dozer Line
-  Completed Line
-  Hand Line
-  Road as Completed Line
-  Planned Secondary Line
-  Proposed Dozer Line
-  Roads_BotelerArea selection
-  NantahalaNationalForest_POI
-  Bladed Road
-  Power Line
-  Trail
-  Trails
-  Containment Perimeter



Feet

IAP_8x11_land_2016_Boteler_NCNC160247

35°8'N
35°7'N
35°6'N

83°40'W 83°39'W 83°38'W 83°37'W