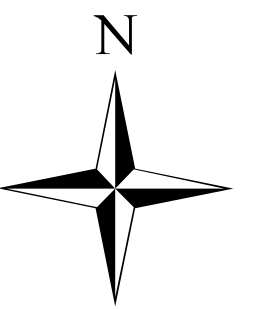




# Boteler Fire

11/12/2016  
Day Shift

Acres as of 11/11/16  
Boteler Fire 6,895 ac  
Buck Creek 8 ac



## Briefing Map

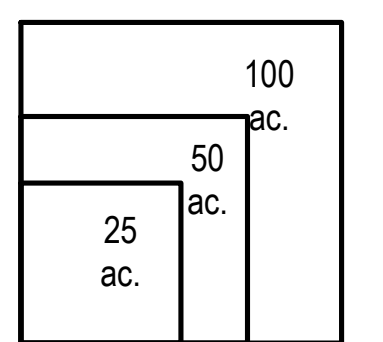
NC-NCF-160247

- Division
- Drop Point
- Fire Origin
- Helispot
- Repeater
- Water Source
- Uncontrolled Fire Edge
- Completed Dozer Line
- Completed Line
- Hand Line
- Road as Completed Line
- Planned Secondary Line
- Proposed Dozer Line
- Bladed Road
- Power Line
- Trail
- Containment Perimeter
- Structure Footprints

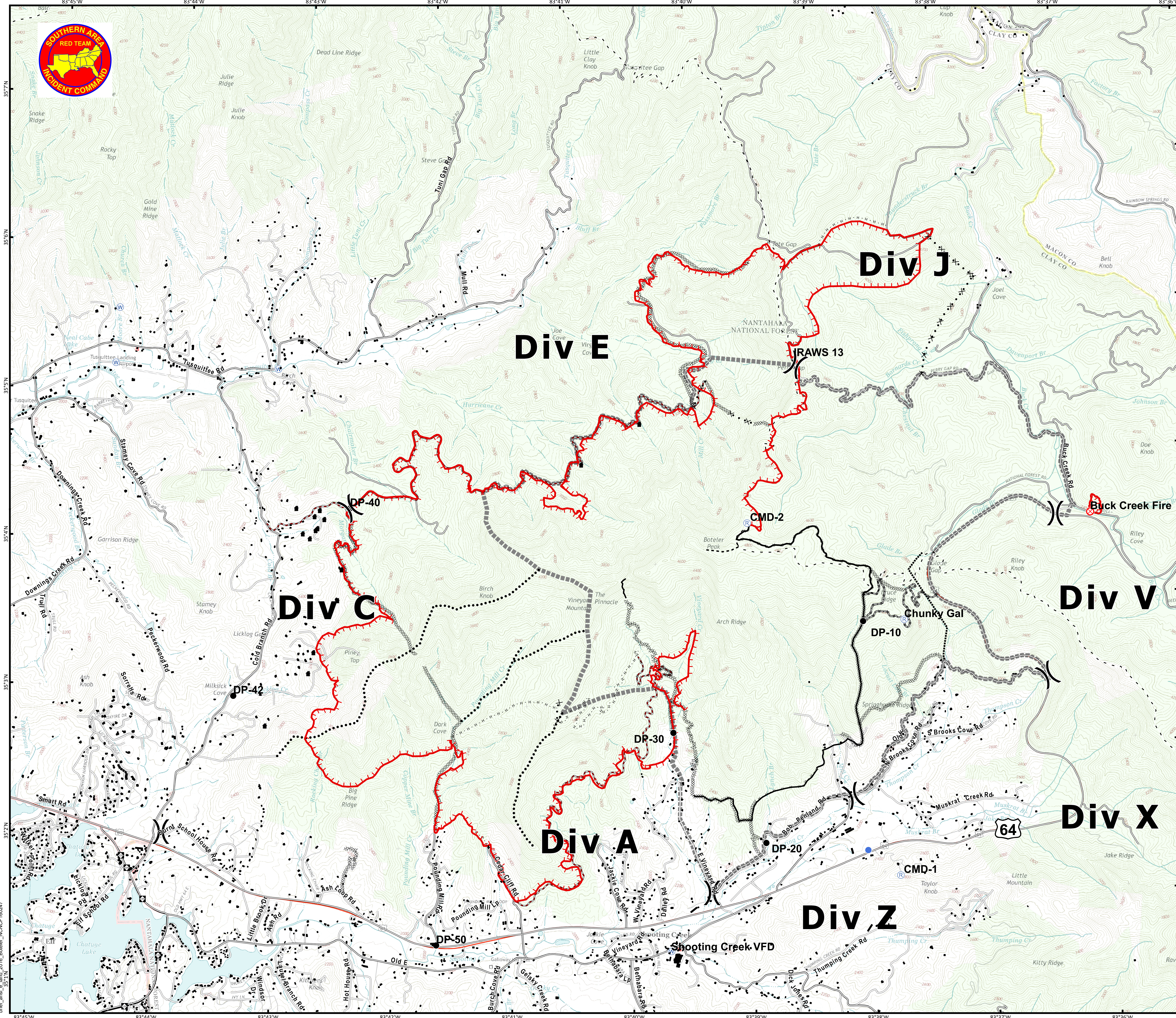
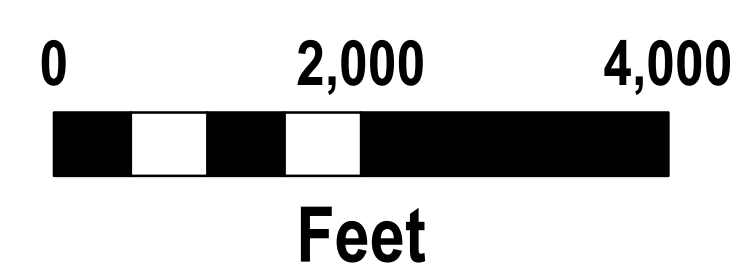
IR flown 1942, 11-10-2016



Download a GeoPDF



11/11/2016 8:21:17 PM  
NC StatePlane NAD83 Feet  
D. Paris, GISS(T)



brief\_ansi\_e\_land\_2016\_Boteler\_NCNC160247