

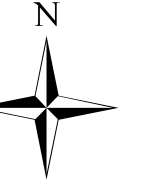


Ferebee & Tellico Fires

Ops Map

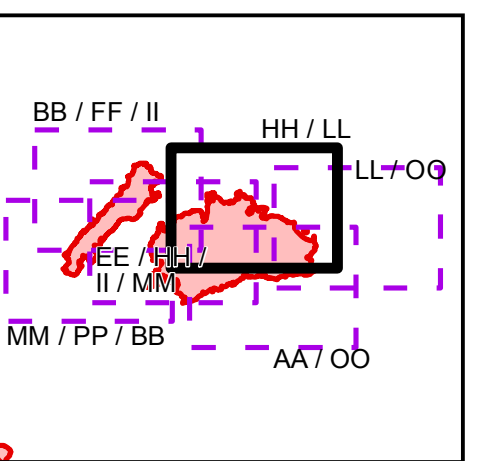
Div HH / LL

11/12/2016
Day Shift

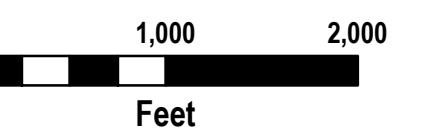
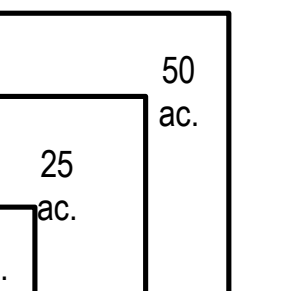


- Division
- Uncontrolled Fire Edge
- Completed Dozer Line
- Completed Line
- Hand Line
- Road as Completed Line
- Planned Fire Line
- Proposed Dozer Line
- Drop Point
- Water Source
- Trail
- Trail of Tears
- 750 foot buffer - total width of 1,500 feet
- Structure

Index Map



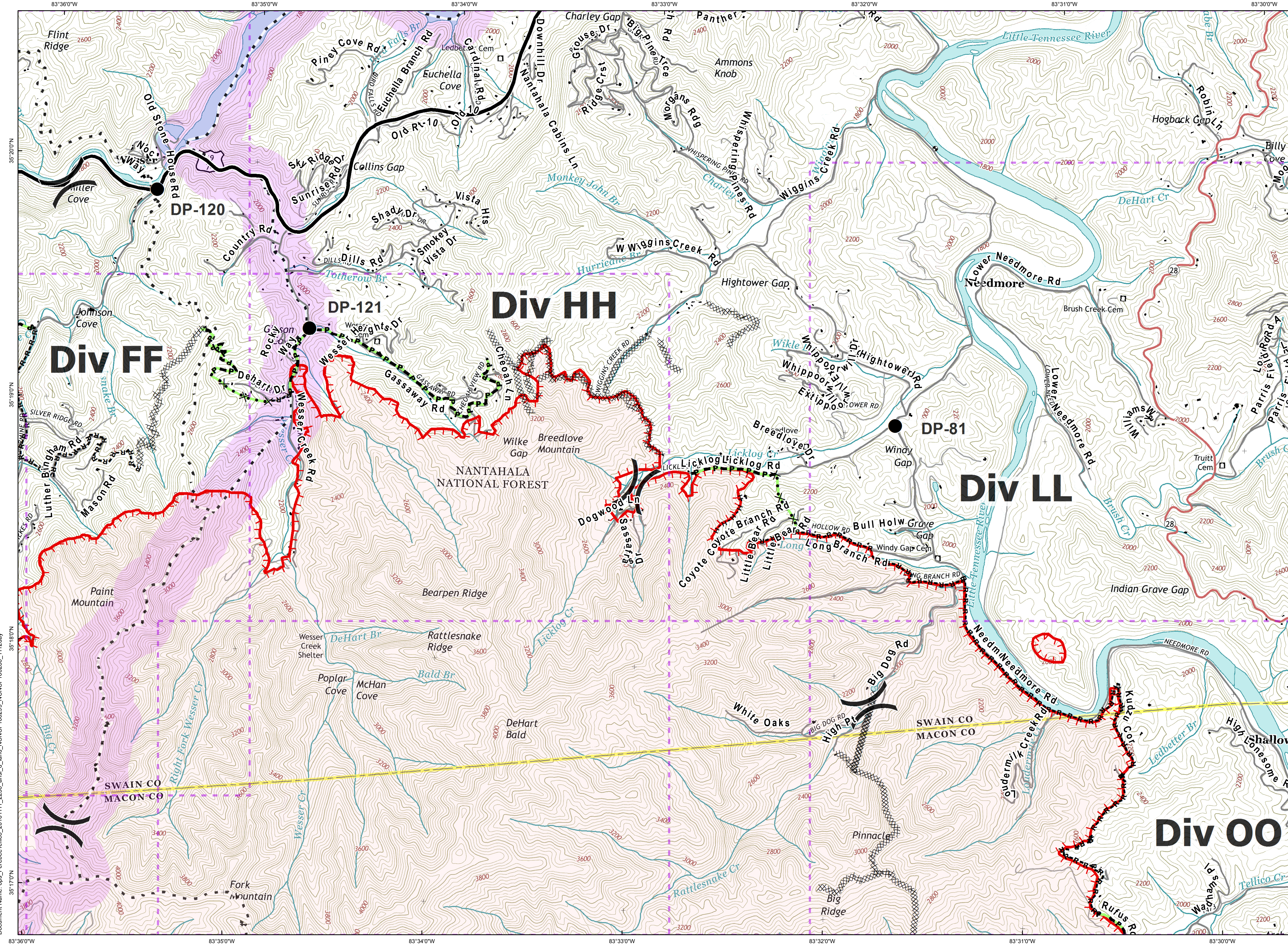
Download a GeoPDF



Information shown is based on the best available data at the time of map production.

Latest intel: 20161111 @ 2130

20161111 @ 2236
Map Datum: NAD83 Feet
Author: A. Thompson, GIS



Document Name: ops_ferebeeTellico_20161111_2236_ansi_d_land_NCNC160299_NCNC160280_1112day