



# Ferebee & Tellico Fires

## Ops Map

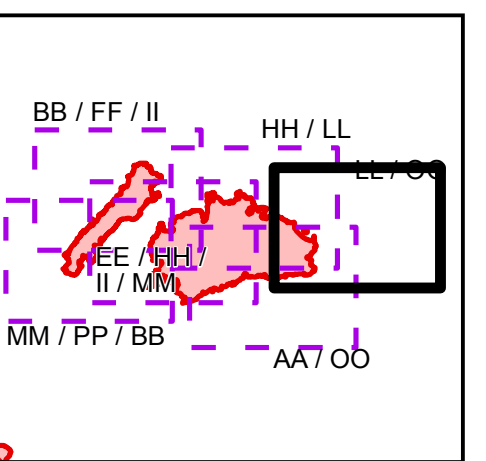
### Div LL / OO

11/12/2016  
Day Shift

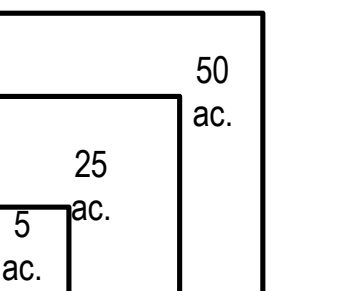


- ( ) Division
- Uncontrolled Fire Edge
- Completed Dozer Line
- Completed Line
- Hand Line
- Road as Completed Line
- Planned Fire Line
- Proposed Dozer Line
- Drop Point
- Water Source
- Trail
- Trail of Tears
- 750 foot buffer - total width of 1,500 feet
- Structure

### Index Map



Download a GeoPDF

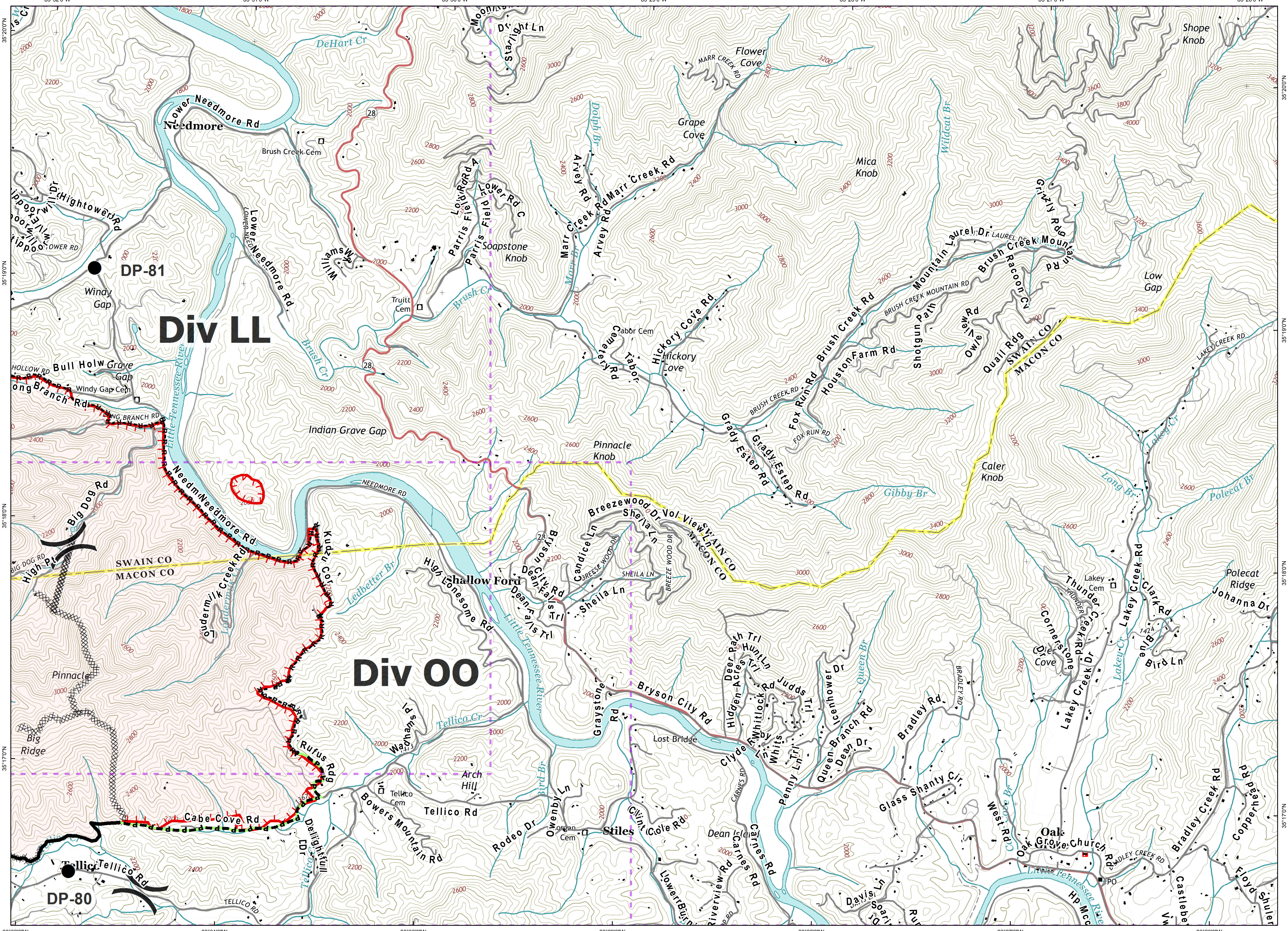


0 1,000 2,000  
Feet

Information shown is based on the best available data at the time of map production.

Latest intel: 20161111 @ 2130

20161111 @ 2236  
Map Datum: NAD83 Feet  
Author: A. Thompson, GIS



Document Name: ops\_ferebeeTellico\_20161111\_2236\_ansi\_d\_land\_NCNC160299\_NCNC160280\_1112day