

Boteler Fire

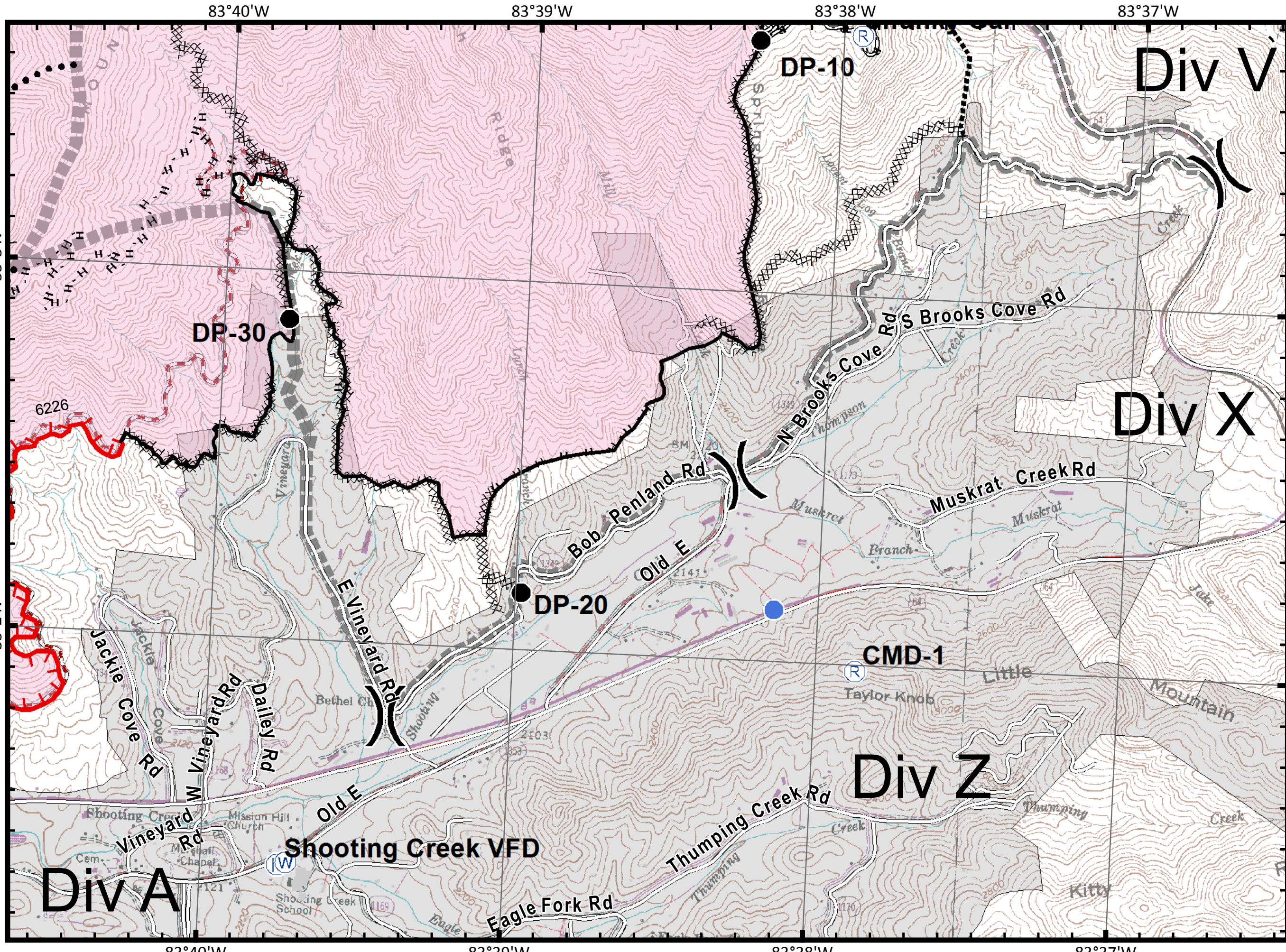
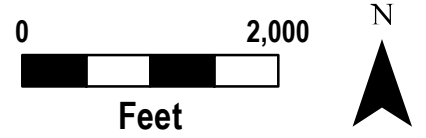
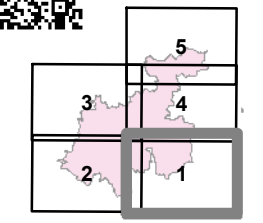
NC-NCF-160247

IAP Tile Div X/Z

11/13/2016
Day Shift

- WX** Mobile Weather Unit
- U** MediVac Site
- Drop Point
- ⊗** Fire Origin
- Helispot
- Ⓡ** Repeater
- Ⓜ** Water Source
- ⓕ** Fire Station
-) (** Division

- Structures
- ┌** Uncontrolled Fire Edge
- ⊗** Completed Dozer Line
- Completed Line
- H** Hand Line
- R** Road as Completed Line
- Planned Secondary Line
- ⊗** Proposed Dozer Line
- Roads_BotelerArea selection
- NantahalaNationalForest_POI
- Bladed Road
- Power Line
- Trail
- Trails
- Containment Perimeter



Boteler Fire

NC-NCF-160247

IAP Tile Div A/C

11/13/2016
Day Shift

WX Mobile Weather Unit

U MediVac Site

● Drop Point

⊗ Fire Origin

● Helispot

Ⓡ Repeater

Ⓢ Water Source

Ⓡ Fire Station

)) Division

■ Structures

└─┘ Uncontrolled Fire Edge

XXXX Completed Dozer Line

— Completed Line

H - Hand Line

R - Road as Completed Line

●● Planned Secondary Line

⊗ Proposed Dozer Line

— Roads_BotelerArea selection

NantahalaNationalForest_POI

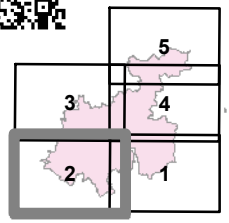
══ Bladed Road

▬ Power Line

▬ Trail

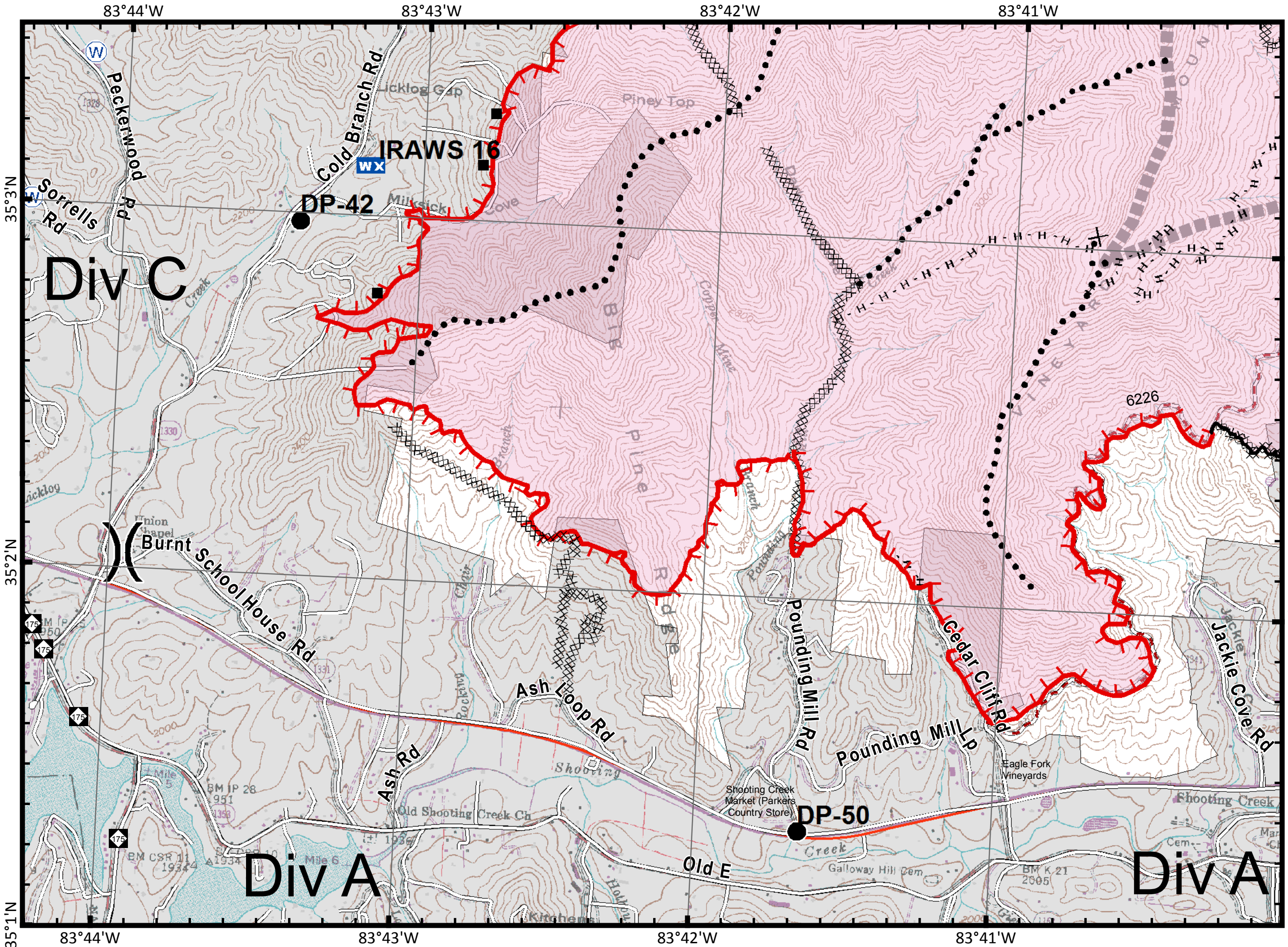
▬ Trails

Ⓡ Containment Perimeter



Feet

11/12/2016 9:14:23 PM
NC StatePlane NAD83 Feet
C. Roberts, GISS



IAP_8x11_land_2016_Boteler_NONCF160247

Boteler Fire

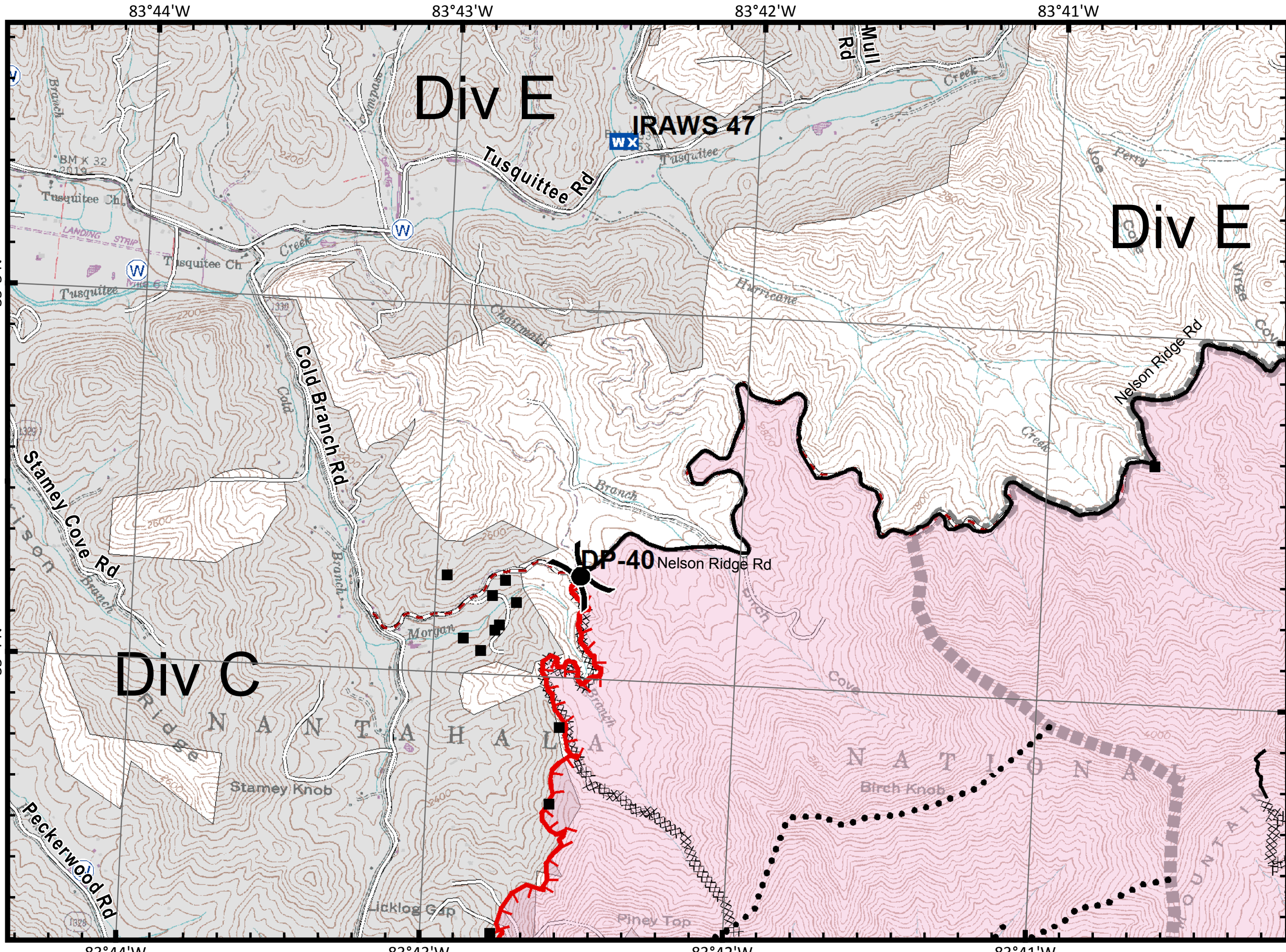
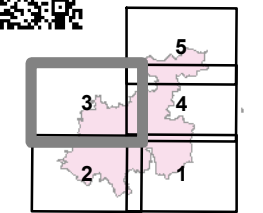
NC-NCF-160247

IAP Tile Div C/E

11/13/2016
Day Shift

- WX** Mobile Weather Unit
- U** MediVac Site
- Drop Point
- ⊗ Fire Origin
- Helispot
- R** Repeater
- W** Water Source
- F** Fire Station

- ()** Division
- Structures
- ┌ Uncontrolled Fire Edge
- ⊗ Completed Dozer Line
- Completed Line
- H - Hand Line
- R - Road as Completed Line
- Planned Secondary Line
- ⊗ Proposed Dozer Line
- Roads_BotelerArea selection
- NantahalaNationalForest_POI
- ▬ Bladed Road
- ▬ Power Line
- ▬ Trail
- ▬ Trails
- ▬ Containment Perimeter



IAP_8x11_land_2016_Boteler_NONCF160247

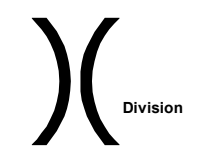
Boteler Fire

NC-NCF-160247

IAP Tile Div J/V

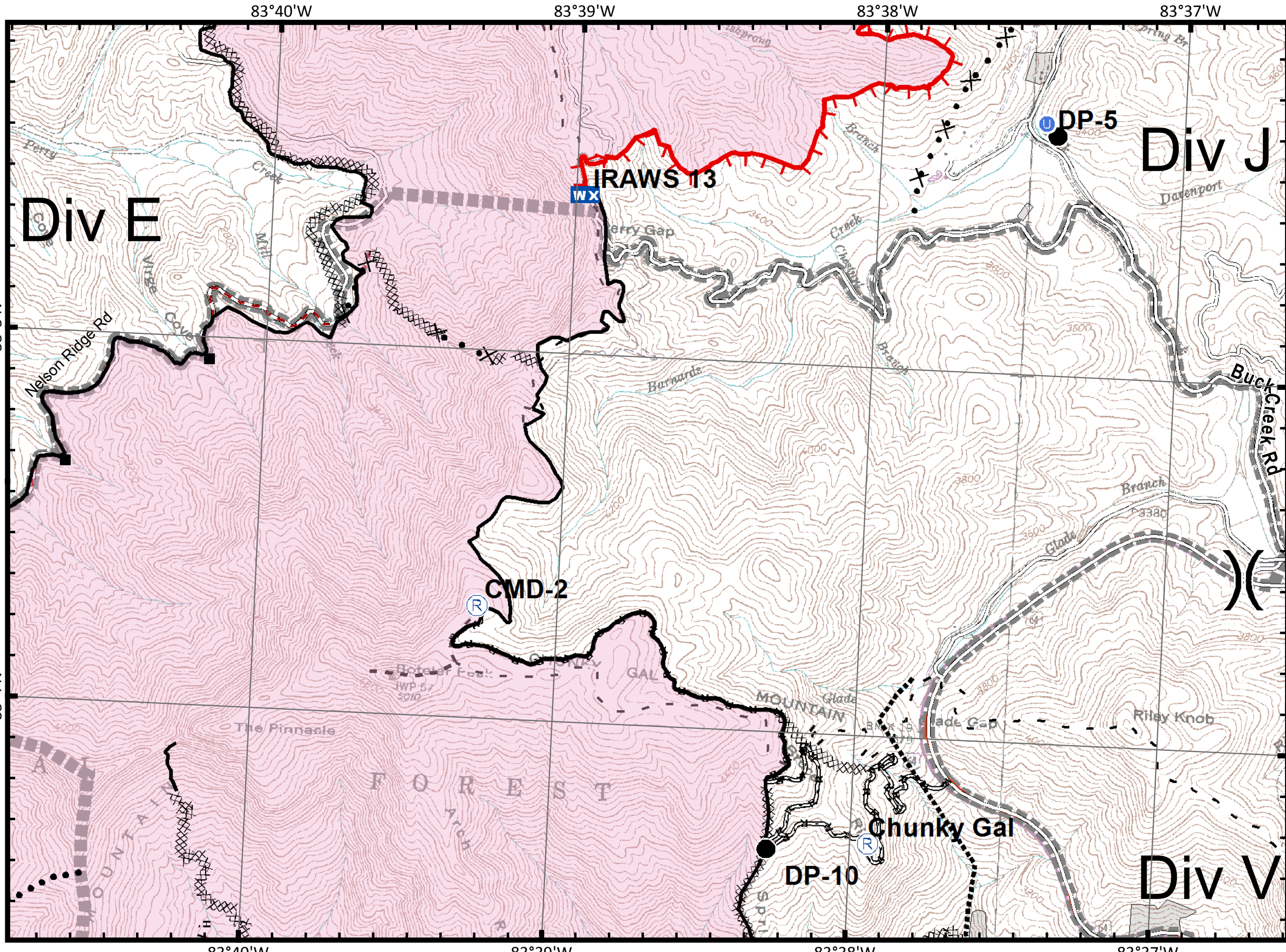
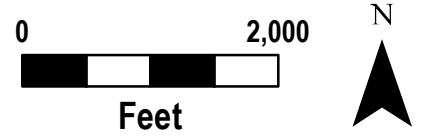
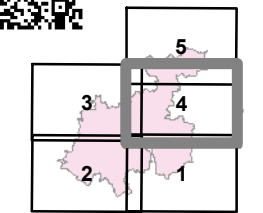
11/13/2016
Day Shift

- WX** Mobile Weather Unit
- U** MediVac Site
- Drop Point
- ⊗** Fire Origin
- Helispot
- Ⓡ** Repeater
- Ⓜ** Water Source
- ⓕ** Fire Station



- Structures
- ┌** Uncontrolled Fire Edge
- ⊗** Completed Dozer Line
- Completed Line
- H** Hand Line
- R** Road as Completed Line
- Planned Secondary Line
- ⊗** Proposed Dozer Line
- Roads_BotelerArea selection

- NantahalaNationalForest_POI
- Bladed Road
- Power Line
- Trail
- Trails
- Containment Perimeter



IAP_8x11_land_2016_Boteler_NCNCF160247

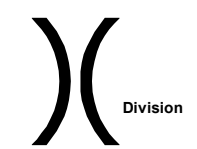
Boteler Fire

NC-NCF-160247

IAP Tile Div E/J

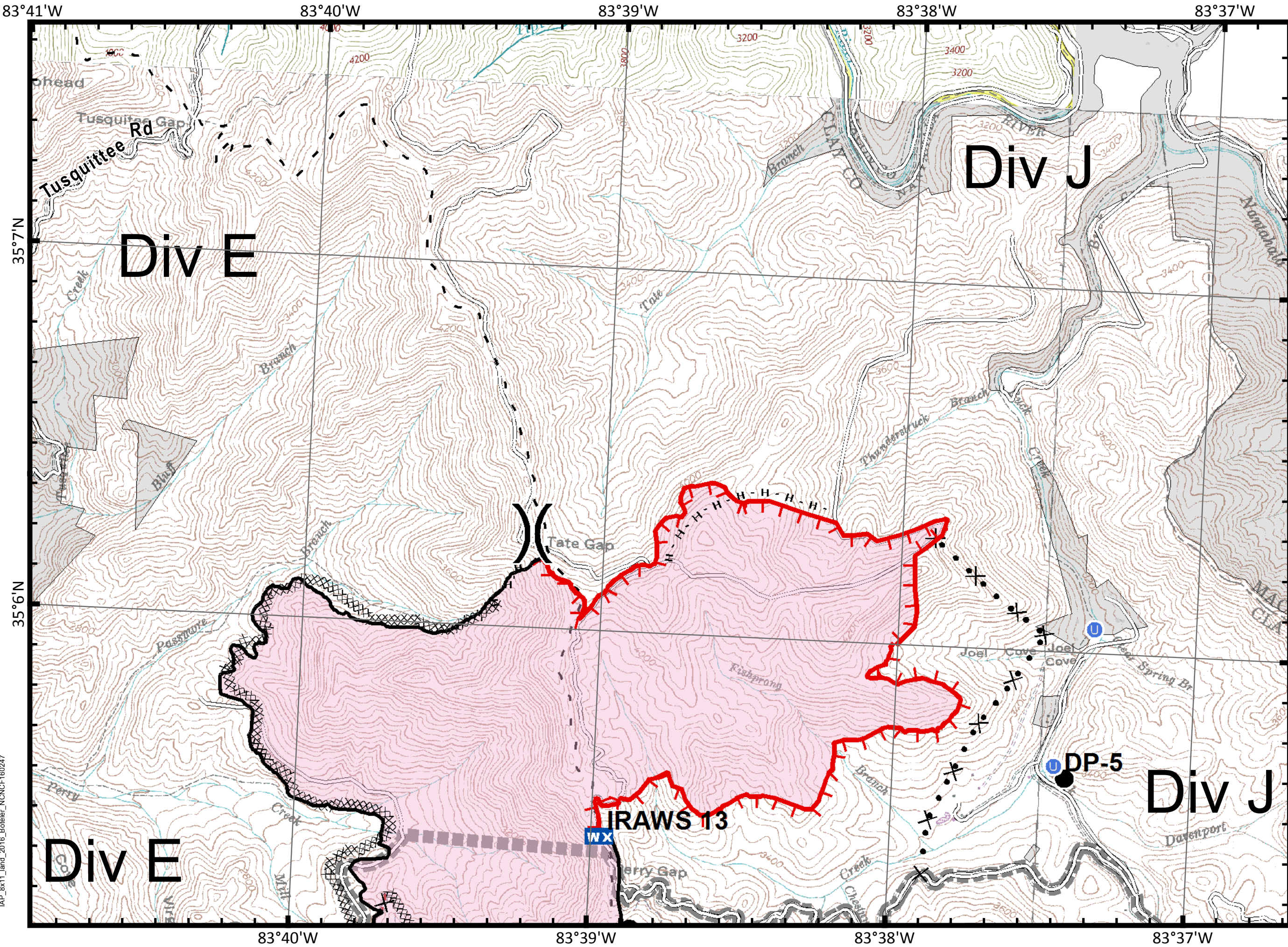
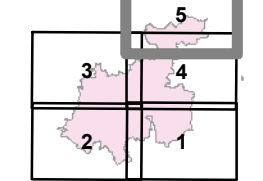
11/13/2016
Day Shift

- WX** Mobile Weather Unit
- U** MediVac Site
- Drop Point
- ⊗** Fire Origin
- Helispot
- Ⓡ** Repeater
- Ⓜ** Water Source
- Ⓡ** Fire Station



- Structures
- ┌** Uncontrolled Fire Edge
- ⊗** Completed Dozer Line
- Completed Line
- H** Hand Line
- R** Road as Completed Line
- Planned Secondary Line
- ⊗** Proposed Dozer Line
- Roads_BotelerArea selection

- NantahalaNationalForest_POI
- Bladed Road
- ▬** Power Line
- ▬** Trail
- ▬** Trails
- Ⓜ** Containment Perimeter



IAP_8x11_land_2016_Boteler_NONCF160247