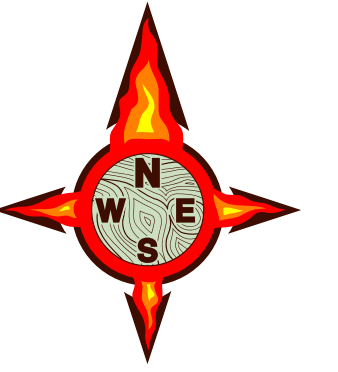




# Boteler Fire

11/12/2016 Day Shift

Acres as of 11/11/16  
Boteler Fire 8,180 ac  
Buck Creek 8 ac



## Briefing Map

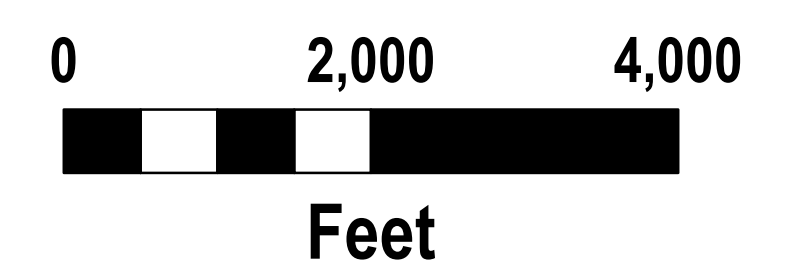
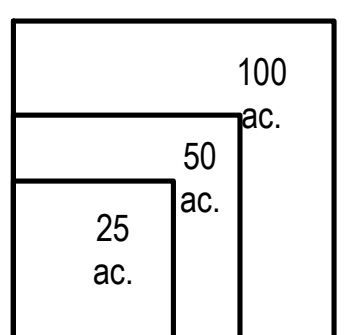
NC-NCF-160247

- Drop Point
- ⊗ Fire Origin
- Helispot
- Ⓡ Repeater
- Ⓜ Water Source
- Ⓜ Mobile Weather Unit
- Ⓜ MediVac Site
- Uncontrolled Fire Edge
- Completed Dozer Line
- Completed Line
- - - Hand Line
- · - · - Road as Completed Line
- · · · · Planned Secondary Line
- × · × · Proposed Dozer Line
- ▭ Containment Perimeter
- ▭ Structure Footprints

To use a GeoPDF, Install PDF Maps App, by Avenza, available for Apple, Android & Windows Mobile Devices

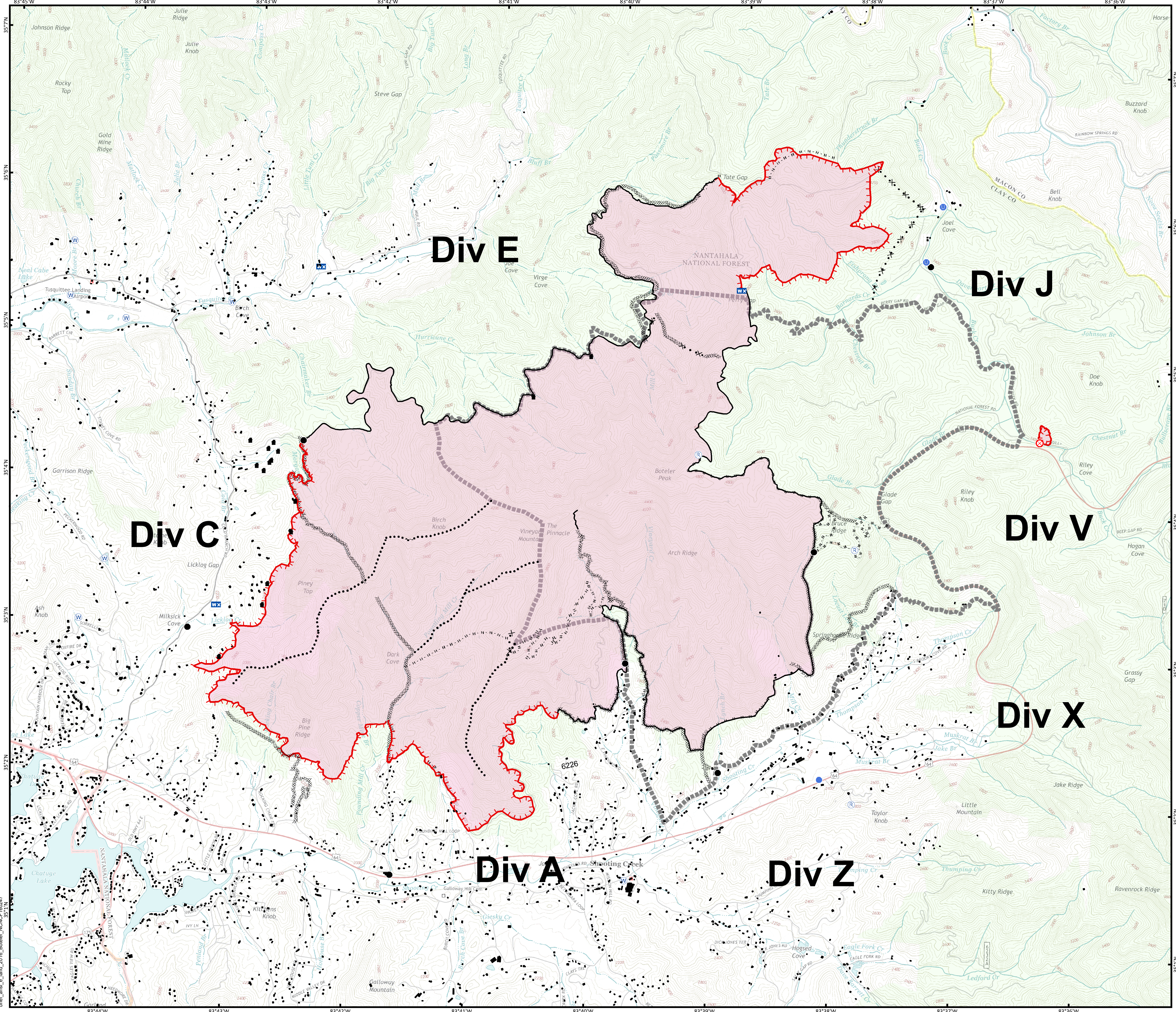


Download a GeoPDF



Information shown is based on the best available data at the time of map production

11/12/2016 9:38:54 PM  
NC StatePlane NAD83 Feet  
C. Roberts, GISS



brief\_ansi\_e\_land\_2016\_Boteler\_NCNC160247