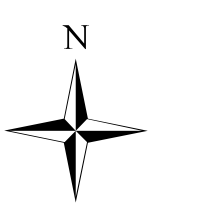




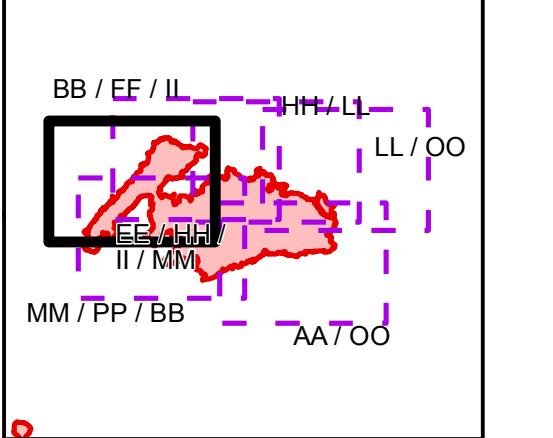
Tellico Fire
Ops Map
Div BB

11/13/2016
 Day Shift

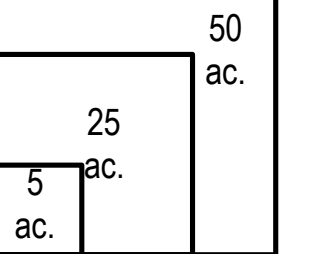


- () Division
- Uncontrolled Fire Edge
- XXXXX Completed Dozer Line
- Completed Line
- · · Hand Line
- R · R · Road as Completed Line
- Planned Fire Line
- X · X · Proposed Dozer Line
- Drop Point
- ⊕ Water Source
- - - Trail
- Trail of Tears
- 750 foot buffer - total width of 1,500 feet
- Structure

Index Map



Download a GeoPDF

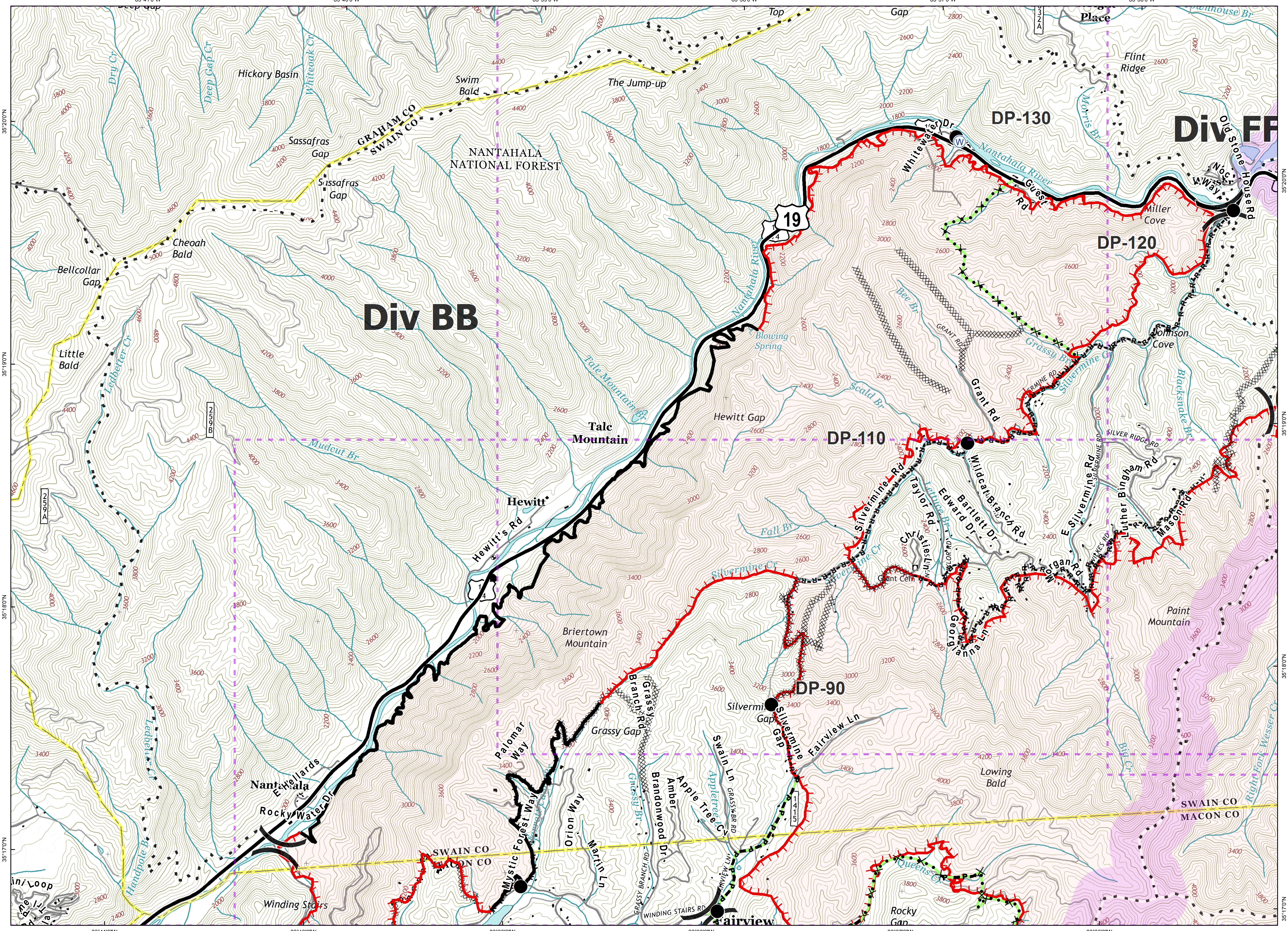


0 1,000 2,000
 Feet

Information shown is based on the best available data at the time of map production.

Latest Intel: 20161112 @ 2300

20161112 @ 2330
 Map Datum: NAD83 Feet
 Author: A. Thompson, GIS



Document Name: ops_FerebeeTellico_20161112_2350_ansi_d_land_NCNCNF160298_NCNCNF160280_1113day