

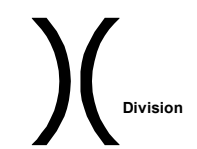
Boteler Fire

NC-NCF-160247

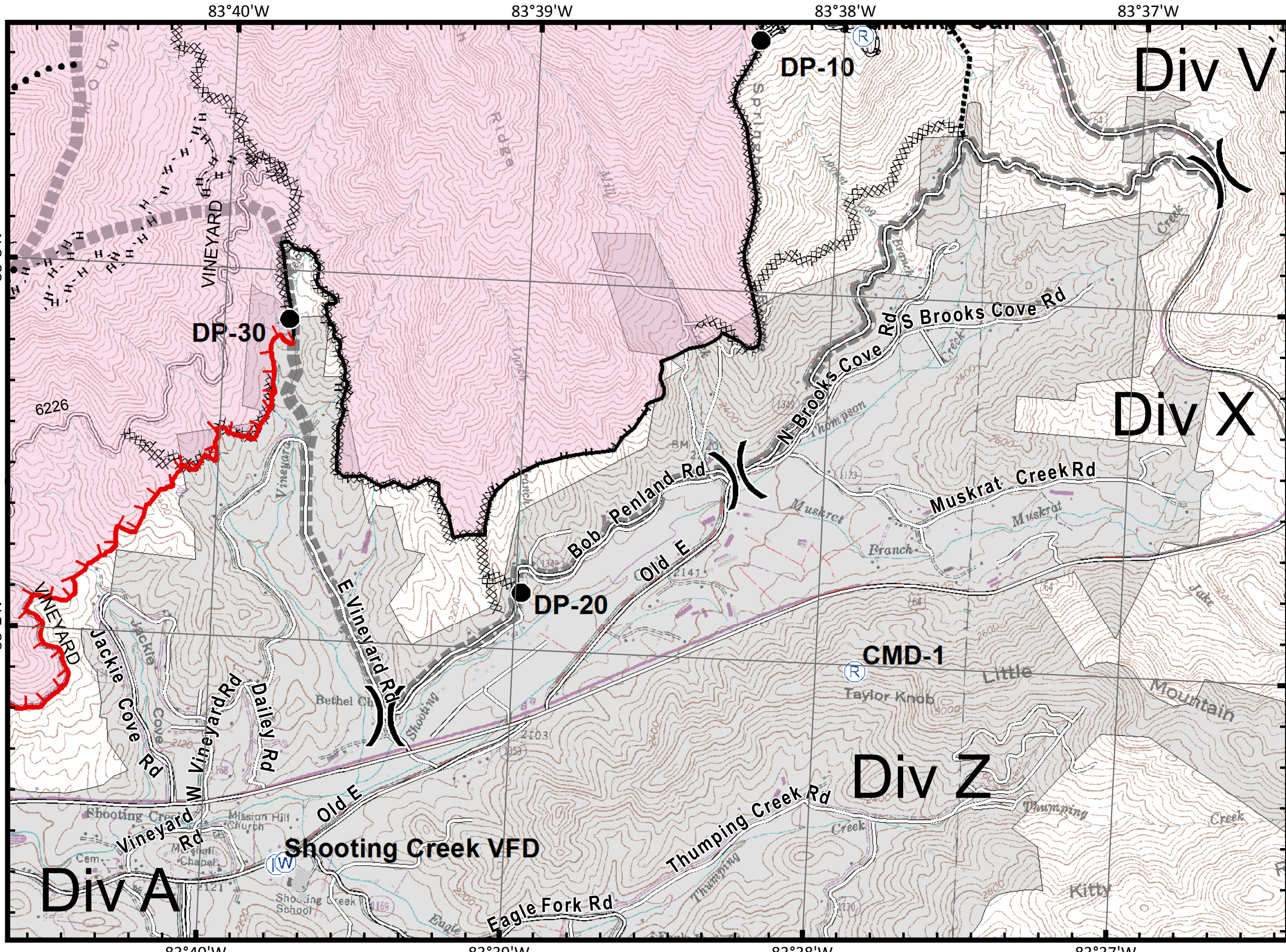
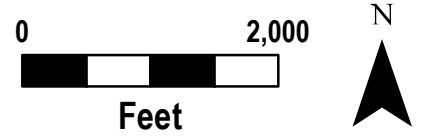
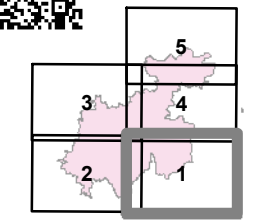
IAP Tile Div X/Z

11/14/2016
Day Shift

- WX** Mobile Weather Unit
- U** MediVac Site
- Drop Point
- ⊗** Fire Origin
- Helispot
- Ⓡ** Repeater
- Ⓜ** Water Source
- Ⓡ** Fire Station



- Structures
- ┌** Uncontrolled Fire Edge
- ⊗** Completed Dozer Line
- Completed Line
- H** Hand Line
- R** Road as Completed Line
- Planned Secondary Line
- ⊗** Proposed Dozer Line
- Roads_BotelerArea selection
- NantahalaNationalForest_POI
- Bladed Road
- Power Line
- Trail
- Trails
- Ⓜ** Containment Perimeter



Boteler Fire

NC-NCF-160247

IAP Tile Div A/C

11/14/2016
Day Shift

WX Mobile Weather Unit

U MediVac Site

● Drop Point

⊗ Fire Origin

● Helispot

Ⓡ Repeater

Ⓢ Water Source

Ⓡ Fire Station

)) Division

■ Structures

└─┘ Uncontrolled Fire Edge

XXXX Completed Dozer Line

— Completed Line

H - Hand Line

R - Road as Completed Line

● Planned Secondary Line

⊗ Proposed Dozer Line

— Roads_BotelerArea selection

NantahalaNationalForest_POI

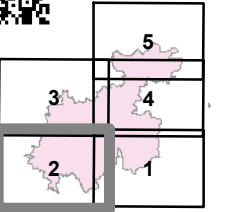
══ Bladed Road

▬ Power Line

▬ Trail

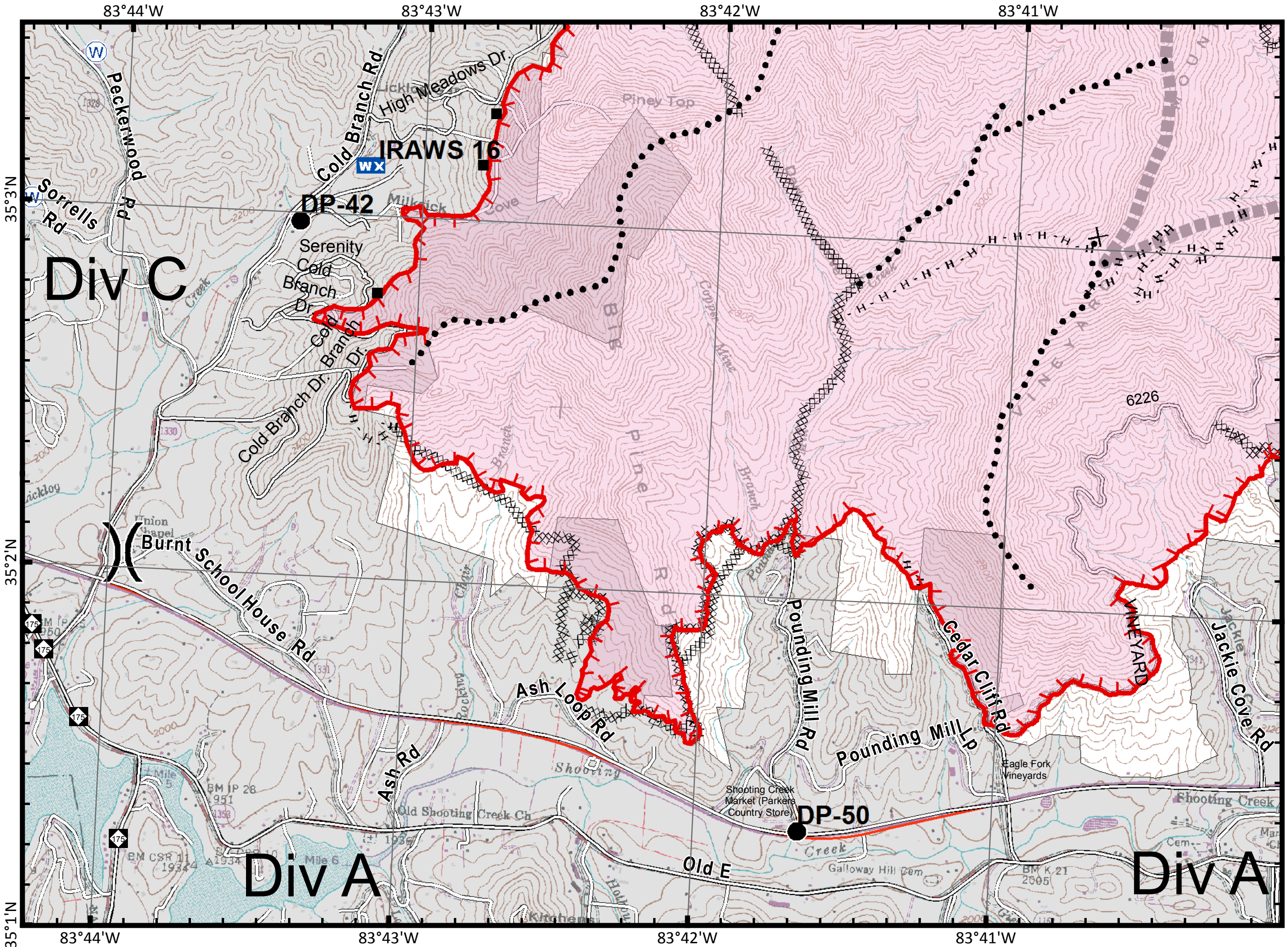
▬ Trails

Ⓡ Containment Perimeter



Feet

11/13/2016 10:21:56 PM
NC StatePlane NAD83 Feet
C. Roberts, GISS



IAP_8x11_land_2016_Boteler_NONCF160247

Div C

Burnt School House Rd

Div A

Div A

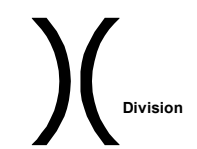
Boteler Fire

NC-NCF-160247

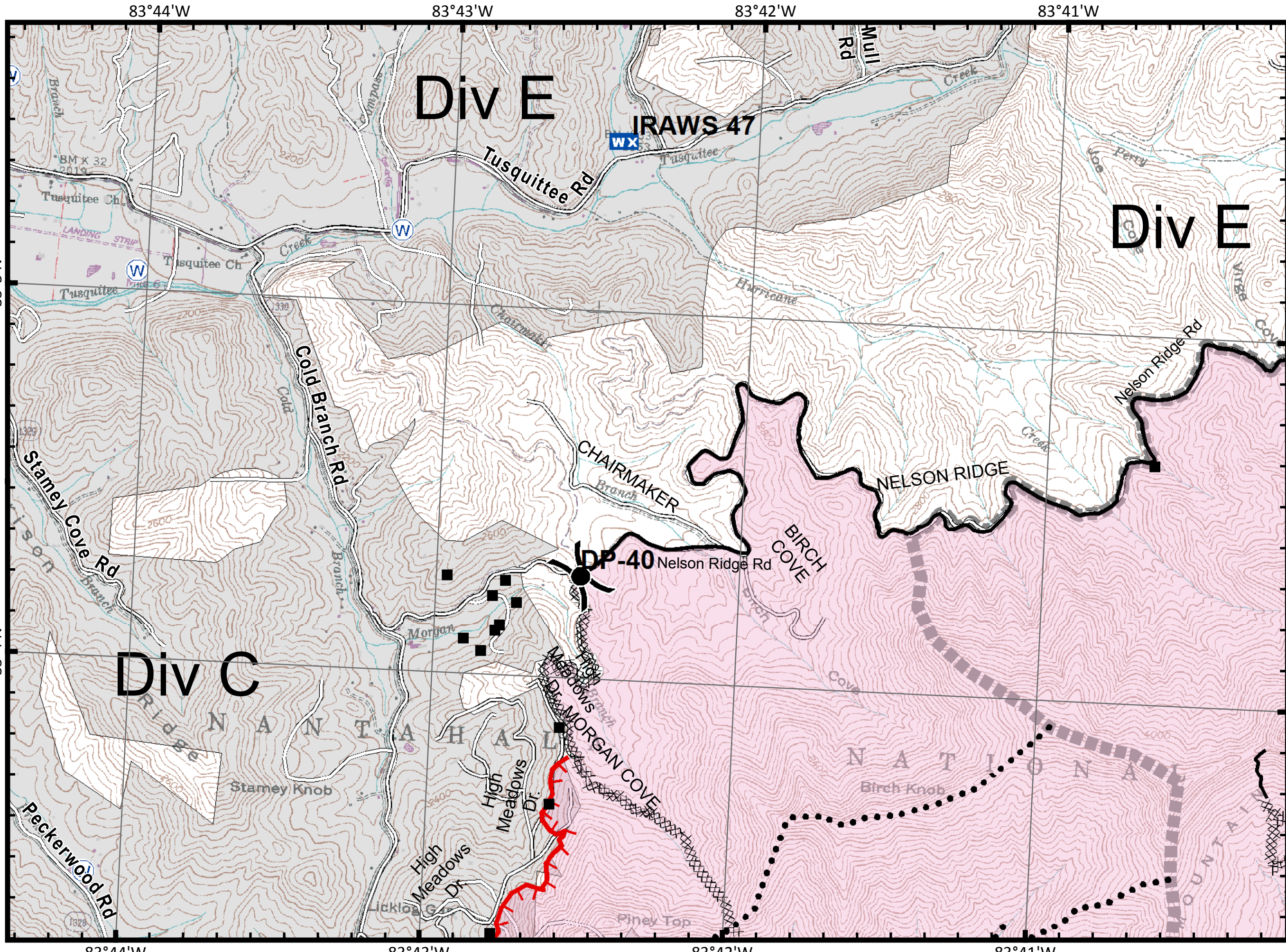
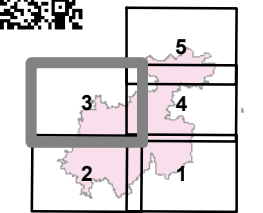
IAP Tile Div C/E

11/14/2016
Day Shift

- WX** Mobile Weather Unit
- U** MediVac Site
- Drop Point
- ⊗** Fire Origin
- Helispot
- Ⓡ** Repeater
- Ⓜ** Water Source
- ⓕ** Fire Station



- Structures
- ┌** Uncontrolled Fire Edge
- ⊗** Completed Dozer Line
- Completed Line
- H** Hand Line
- R** Road as Completed Line
- Planned Secondary Line
- ⊗** Proposed Dozer Line
- Roads_BotelerArea selection
- NantahalaNationalForest_POI
- Bladed Road
- Power Line
- Trail
- Trails
- Containment Perimeter



IAP_8x11_land_2016_Boteler_NONCF160247

Boteler Fire

NC-NCF-160247

IAP Tile Div J/V

11/14/2016
Day Shift

WX Mobile Weather Unit

U MediVac Site

● Drop Point

⊗ Fire Origin

● Helispot

Ⓡ Repeater

Ⓜ Water Source

Ⓡ Fire Station

) (Division

■ Structures

┌ Uncontrolled Fire Edge

⊗ Completed Dozer Line

— Completed Line

H - Hand Line

R - Road as Completed Line

● Planned Secondary Line

⊗ Proposed Dozer Line

— Roads_BotelerArea selection

NantahalaNationalForest_POI

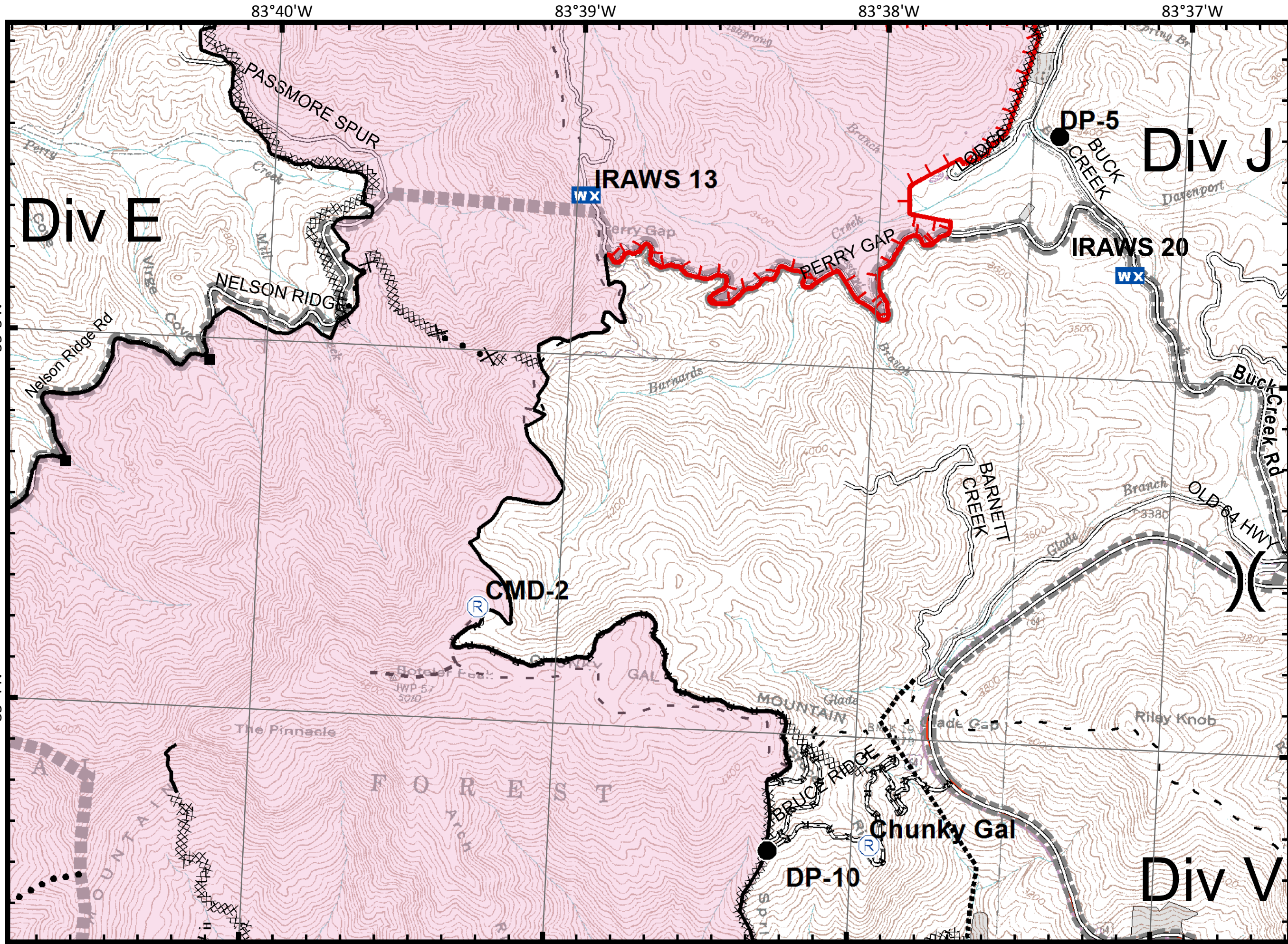
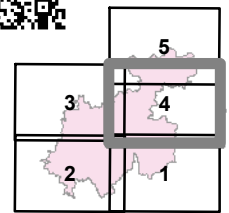
▬ Bladed Road

▬ Power Line

▬ Trail

▬ Trails

▬ Containment Perimeter



IAP_8x11_land_2016_Boteler_NCNCF160247

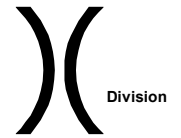
Boteler Fire

NC-NCF-160247

IAP Tile Div E/J

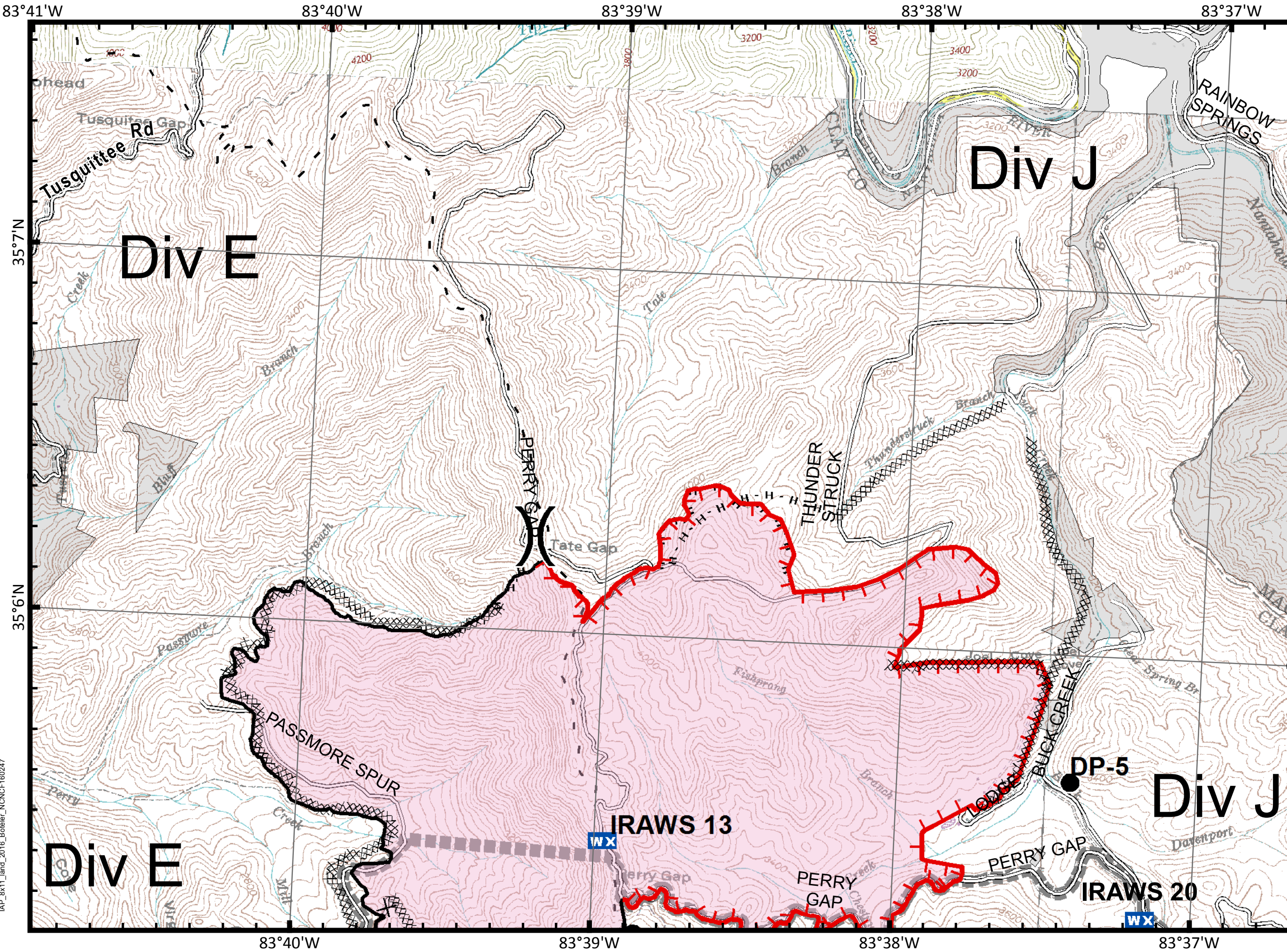
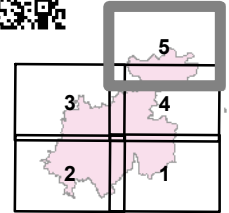
11/14/2016
Day Shift

- WX** Mobile Weather Unit
- U** MediVac Site
- Drop Point
- ⊗** Fire Origin
- Helispot
- Ⓡ** Repeater
- Ⓜ** Water Source
- ⓕ** Fire Station



- Structures
- ┌** Uncontrolled Fire Edge
- ⊗** Completed Dozer Line
- Completed Line
- H** Hand Line
- R** Road as Completed Line
- Planned Secondary Line
- ⊗** Proposed Dozer Line
- - -** Roads_BotelerArea selection

- ▬** Bladed Road
- ▬▬▬** Power Line
- ▬▬▬** Trail
- ▬▬▬** Trails
- Ⓜ** Containment Perimeter



IAP_8x11_land_2016_Boteler_NCNCF160247