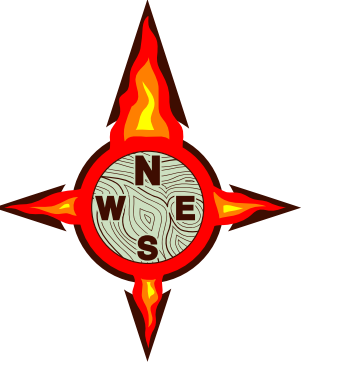




Boteler Fire

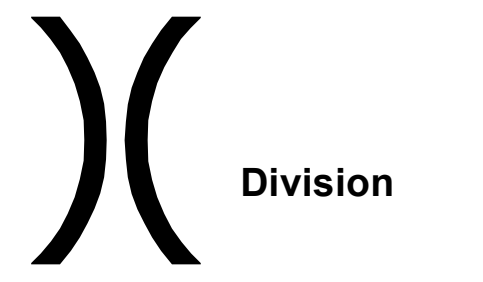
11/15/2016 Day Shift

Approximate Infrared Acres as of 11/14/16
Boteler Fire 8,967 ac
Buck Creek 8 ac



INFRARED Briefing Map

NC-NCF-160247



- Drop Point
- ⊗ Fire Origin
- Helispot
- Ⓡ Repeater
- Ⓜ Water Source
- ⓂⓍ Mobile Weather Unit
- Ⓜ MediVac Site



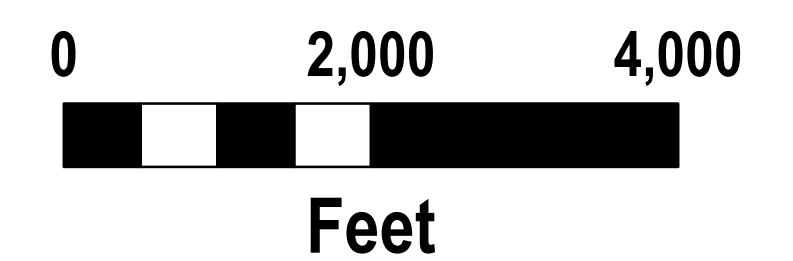
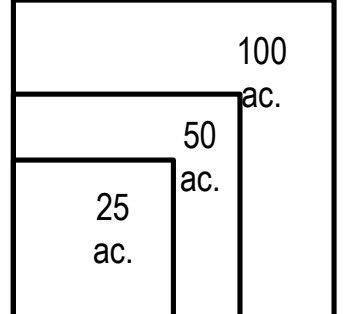
IR flown 2226, 11-14-2016

- 11-15-2016 Isolated Heat Sources
- ⊗ 11-15-2016 Scattered Heat
- ⊗ 11-15-2016 Heat Perimeter

To use a GeoPDF, Install PDF Maps App, by Avenza, available for Apple, Android & Windows Mobile Devices

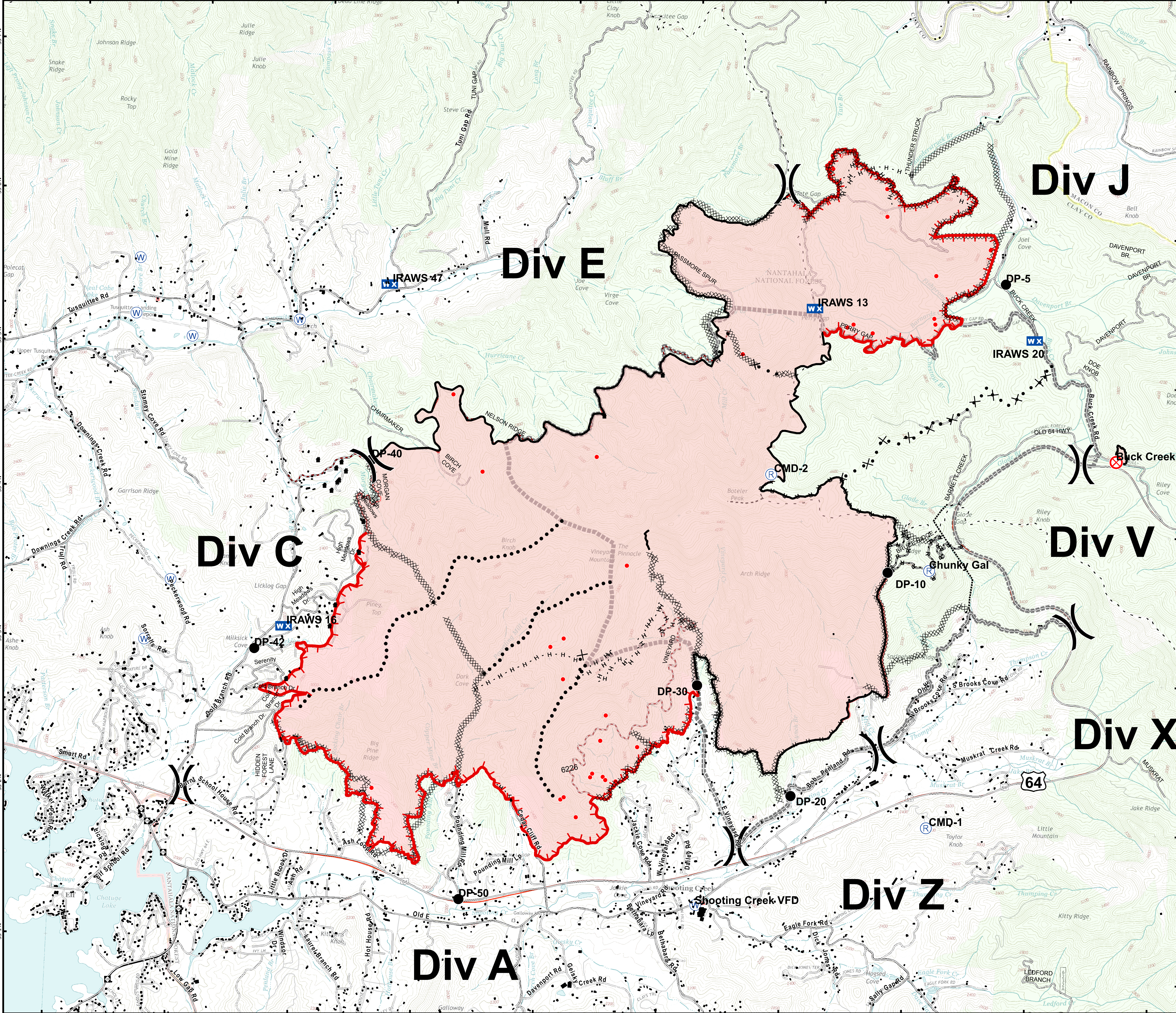


Download a GeoPDF



Information shown is based on the best available data at the time of map production

11/15/2016 6:04:48 AM
NC StatePlane NAD83 Feet
C. Roberts, GISS



BAM_briefing_IR_ansi_e_land_2016_Boteler_NCNC160247