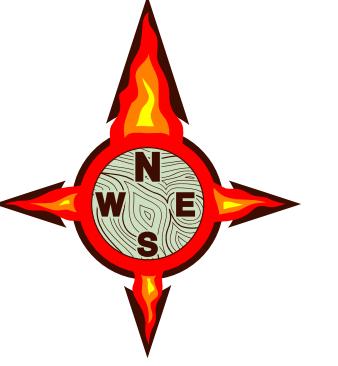




# Boteler Fire

11/15/2016 Day Shift

Acres as of 11/14/16  
Boteler Fire 8,966 ac  
Buck Creek 8 ac



## Briefing Map

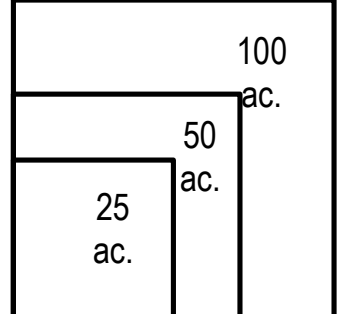
NC-NCF-160247

- Division
- Drop Point
- Fire Origin
- Hellsport
- Repeater
- Water Source
- Mobile Weather Unit
- MediVac Site
- Uncontrolled Fire Edge
- Completed Dozer Line
- Completed Line
- Hand Line
- Road as Completed Line
- Planned Secondary Line
- Proposed Dozer Line
- Bladed Road
- Power Line
- Trail
- Containment Perimeter
- Structure Footprints

To use a GeoPDF, Install PDF Maps App, by Avenza, available for Apple, Android & Windows Mobile Devices



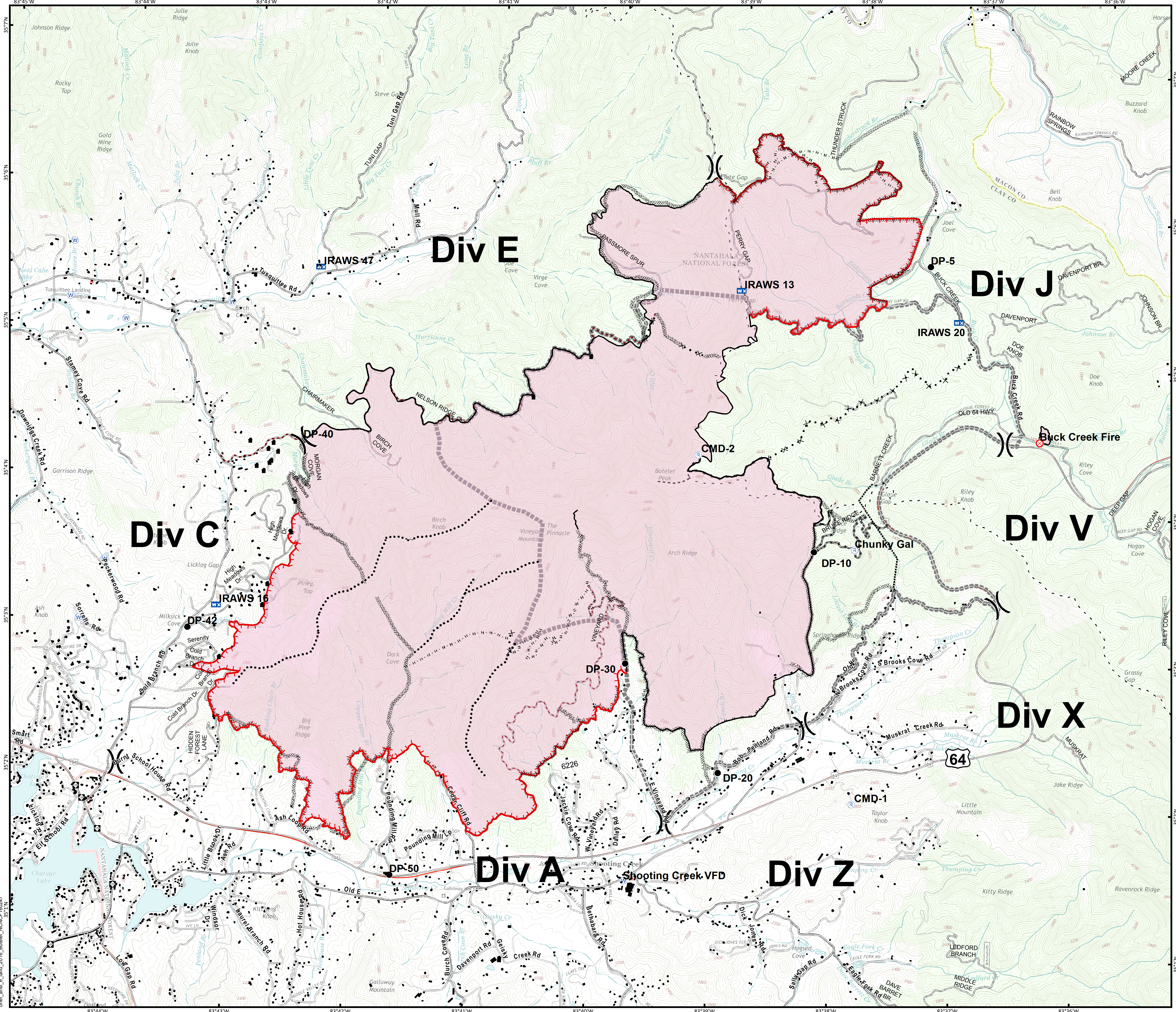
Download a GeoPDF



Feet

Information shown is based on the best available data at the time of map production

11/14/2016 9:27:25 PM  
NC StatePlane NAD83 Feet  
C. Roberts, GIS



brief\_ansi\_e\_land\_2016\_Boteler\_NCNC160247