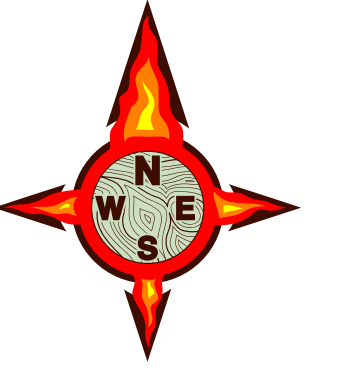




# Boteler Fire

11/15/2016 Day Shift

Approximate Infrared Acres as of 11/14/16  
Boteler Fire 8,967 ac  
Buck Creek 8 ac



## INFRARED Briefing Map

NC-NCF-160247

- ( ) Division
- Drop Point
- ⊗ Fire Origin
- Hellsport
- Ⓡ Repeater
- Ⓜ Water Source
- Ⓜ Mobile Weather Unit
- Ⓜ MediVac Site
- Uncontrolled Fire Edge
- Completed Dozer Line
- Completed Line
- · · · · Hand Line
- · · · · Road as Completed Line
- · · · · Planned Secondary Line
- × · × · Proposed Dozer Line
- Bladed Road
- Power Line
- Trail
- ⊠ Containment Perimeter
- Structure Footprints

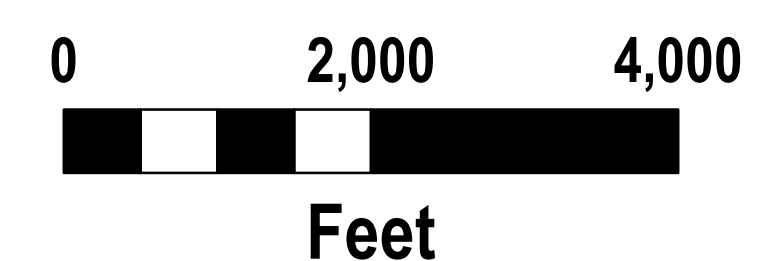
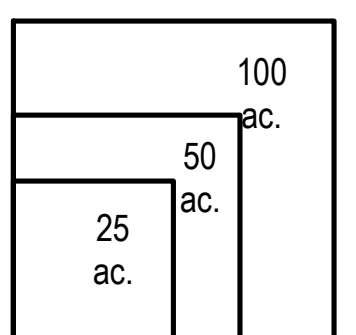
### IR flown 2226, 11-14-2016

- 11-14-2016 Isolated Heat Sources
- ⊗ 11-14-2016 Scattered Heat
- ⊗ 11-14-2016 Heat Perimeter

To use a GeoPDF, Install PDF Maps App, by Avenza, available for Apple, Android & Windows Mobile Devices

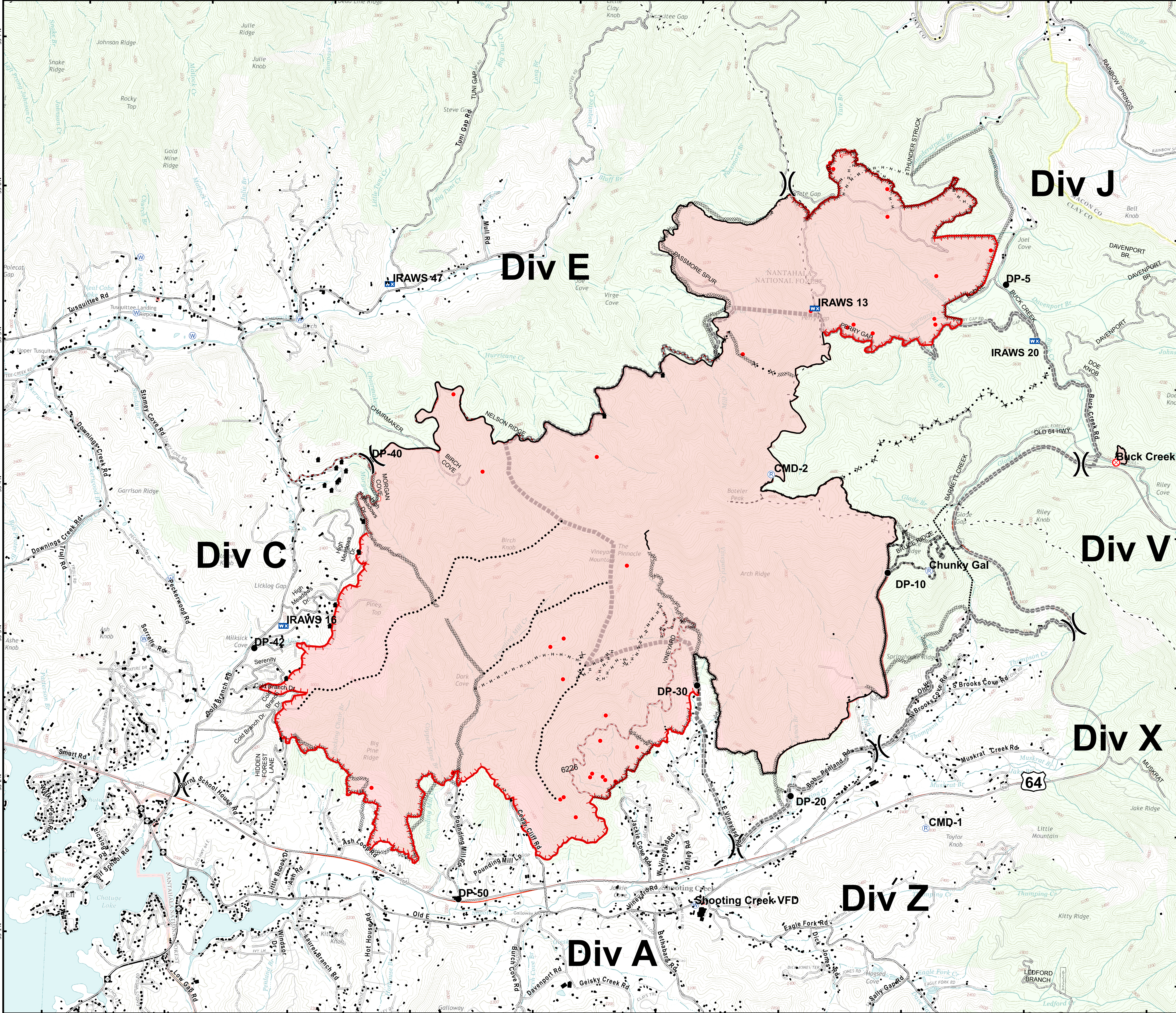


Download a GeoPDF



Information shown is based on the best available data at the time of map production

11/15/2016 6:12:24 AM  
NC StatePlane NAD83 Feet  
C. Roberts, GIS



briefing\_IR\_ansi\_e\_land\_2016 Boteler NCNCF160247