

Boteler Fire

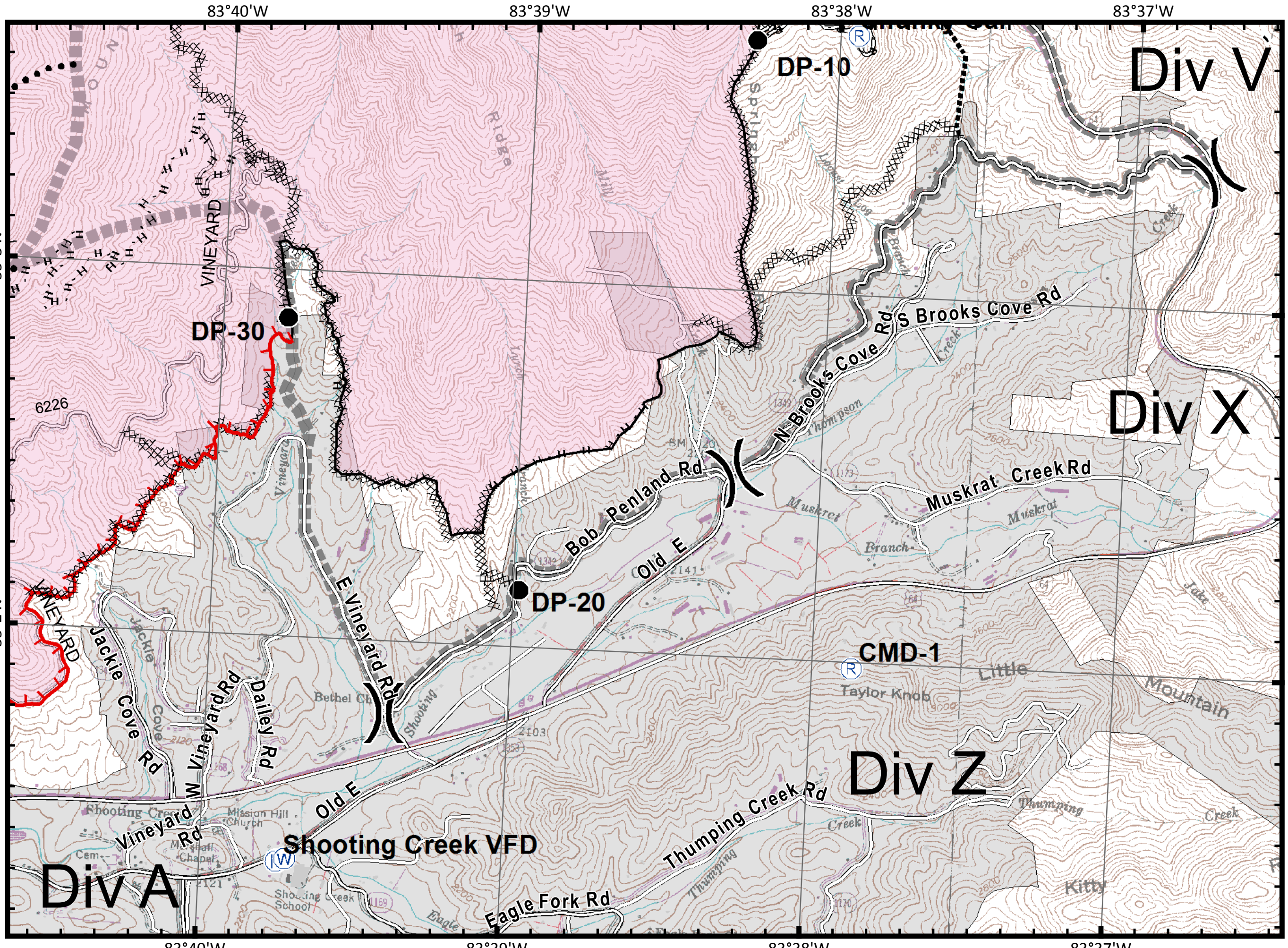
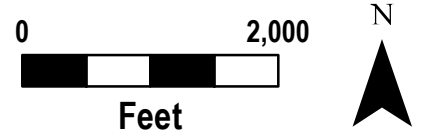
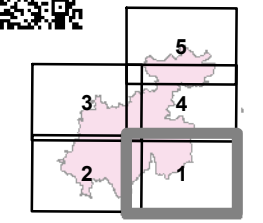
NC-NCF-160247

IAP Tile Div X/Z

11/16/2016
Day Shift

- Mobile Weather Unit
- MediVac Site
- Drop Point
- Fire Origin
- Helispot
- Repeater
- Water Source
- Fire Station

- Division
- Structures
- Uncontrolled Fire Edge
- Completed Dozer Line
- Completed Line
- Hand Line
- Road as Completed Line
- Planned Secondary Line
- Proposed Dozer Line
- Roads_BotelerArea selection
- Nantahala National Forest POI
- Bladed Road
- Power Line
- Trail
- Trails
- Containment Perimeter



IAP_8x11_land_2016_Boteler_NCNCF160247

Boteler Fire

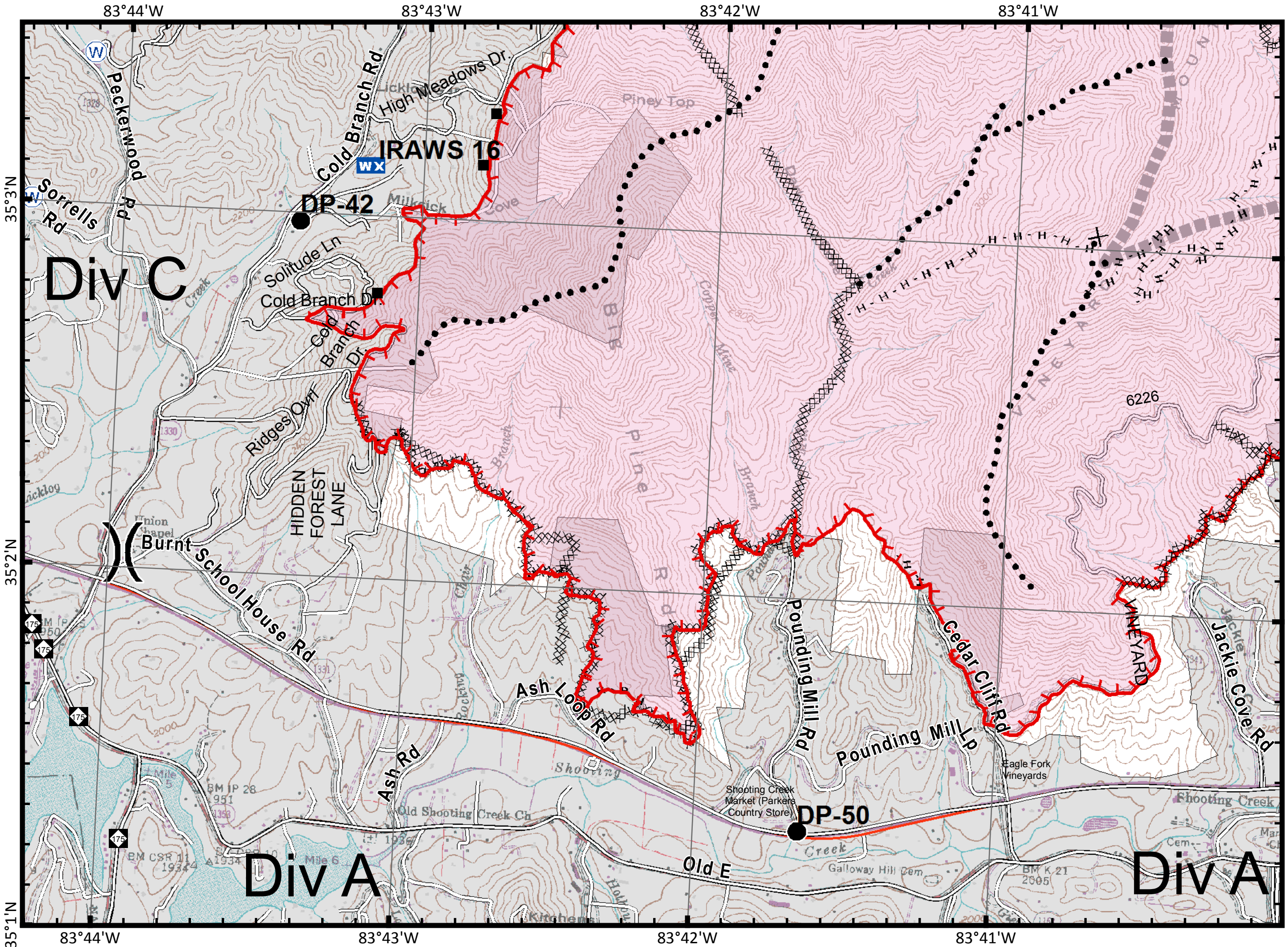
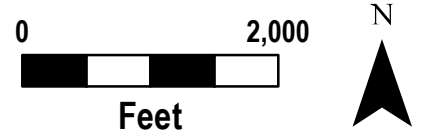
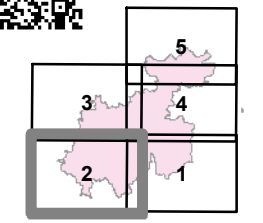
NC-NCF-160247

IAP Tile Div A/C

11/16/2016
Day Shift

- WX** Mobile Weather Unit
- U** MediVac Site
- Drop Point
- ⊗** Fire Origin
- Helispot
- Ⓡ** Repeater
- Ⓜ** Water Source
- ⓕ** Fire Station

- ()** Division
- Structures
- └─┘** Uncontrolled Fire Edge
- ⊗** Completed Dozer Line
- Completed Line
- H -** Hand Line
- R -** Road as Completed Line
- Planned Secondary Line
- ⊗** Proposed Dozer Line
- Roads_BotelerArea selection
- NantahalaNationalForest_POI
- ▬** Bladed Road
- ▬** Power Line
- ▬** Trail
- ▬** Containment Perimeter



IAP_8x11_land_2016_Boteler_NONCF160247

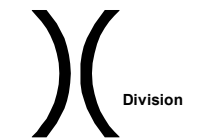
Boteler Fire

NC-NCF-160247

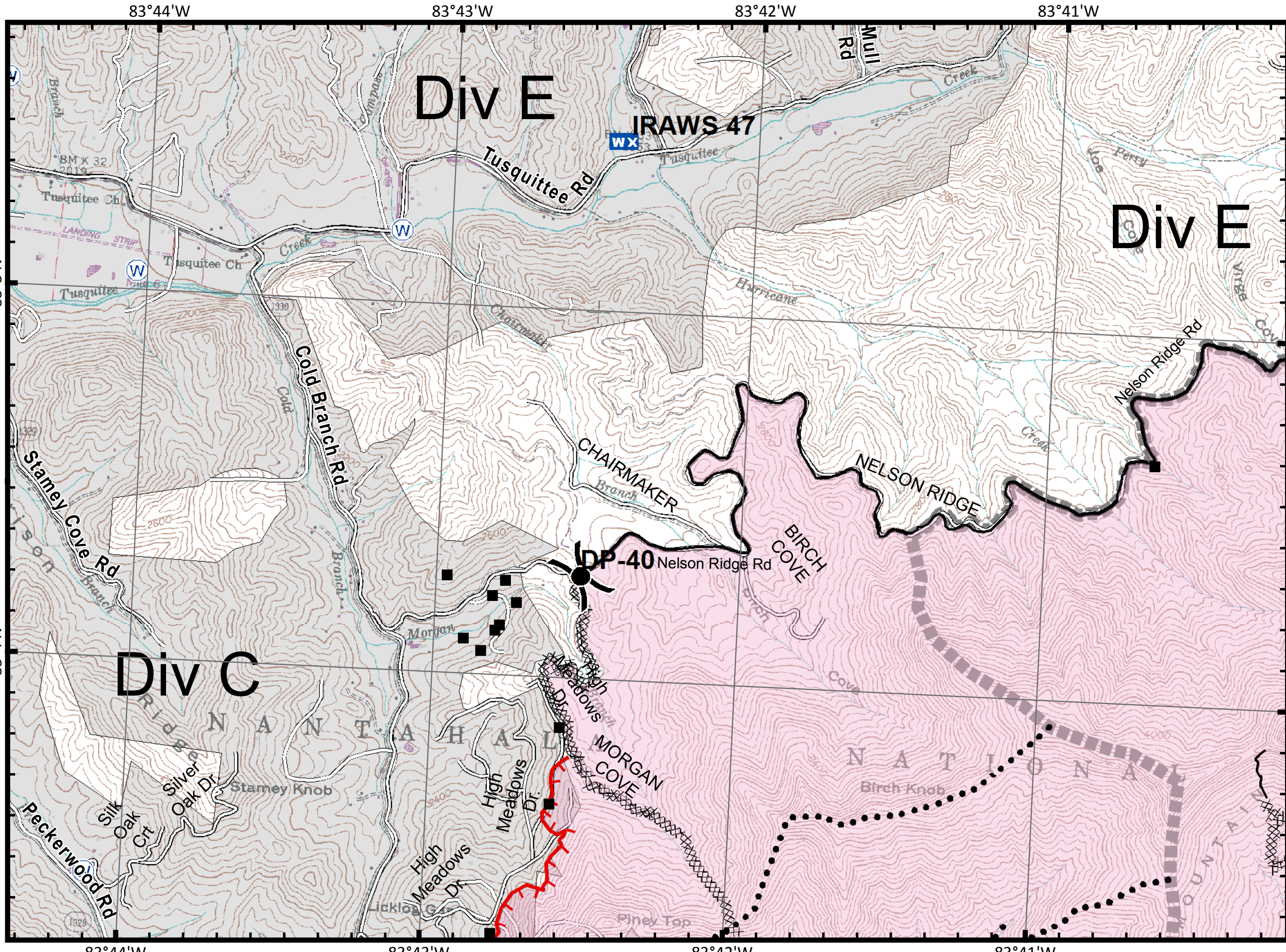
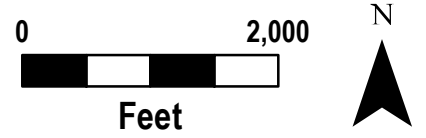
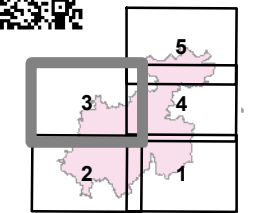
IAP Tile Div C/E

11/16/2016
Day Shift

- WX** Mobile Weather Unit
- U** MediVac Site
- Drop Point
- ⊗** Fire Origin
- Helispot
- Ⓡ** Repeater
- Ⓜ** Water Source
- ⓕ** Fire Station



- Structures
- ┌** Uncontrolled Fire Edge
- ⊗** Completed Dozer Line
- Completed Line
- H** Hand Line
- R** Road as Completed Line
- Planned Secondary Line
- ⊗** Proposed Dozer Line
- Roads_BotelerArea selection
- NantahalaNationalForest_POI
- ▬** Bladed Road
- ▬** Power Line
- ▬** Trail
- ▬** Trails
- ▬** Containment Perimeter



IAP_8x11_land_2016_Boteler_NONCF160247

Boteler Fire

NC-NCF-160247

IAP Tile Div J/V

11/16/2016
Day Shift

WX Mobile Weather Unit

U MediVac Site

● Drop Point

⊗ Fire Origin

● Helispot

Ⓡ Repeater

Ⓜ Water Source

F Fire Station

() Division

■ Structures

┌ Uncontrolled Fire Edge

⊗ Completed Dozer Line

— Completed Line

H Hand Line

R Road as Completed Line

● Planned Secondary Line

⊗ Proposed Dozer Line

— Roads_BotelerArea selection

■ NantahalaNationalForest_POI

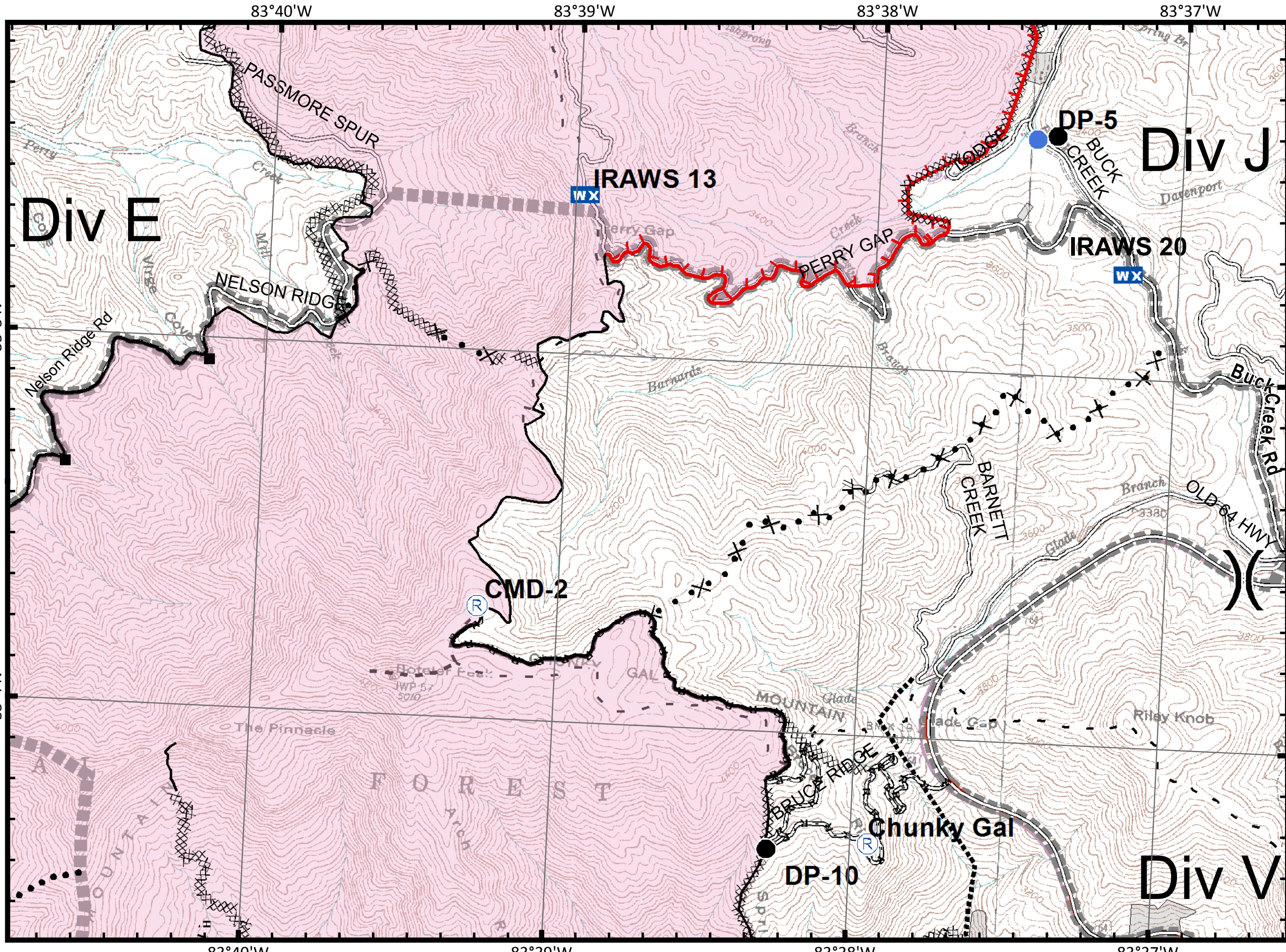
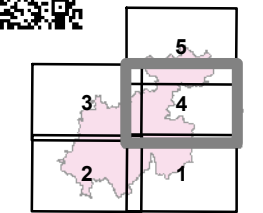
— Bladed Road

▬ Power Line

— Trail

— Trails

Ⓜ Containment Perimeter



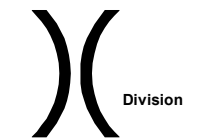
Boteler Fire

NC-NCF-160247

IAP Tile Div E/J

11/16/2016
Day Shift

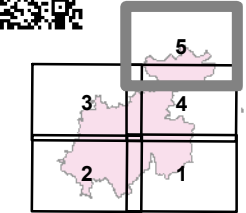
- WX** Mobile Weather Unit
- U** MediVac Site
- Drop Point
- ⊗** Fire Origin
- Helispot
- Ⓡ** Repeater
- Ⓜ** Water Source
- ⓕ** Fire Station



Division

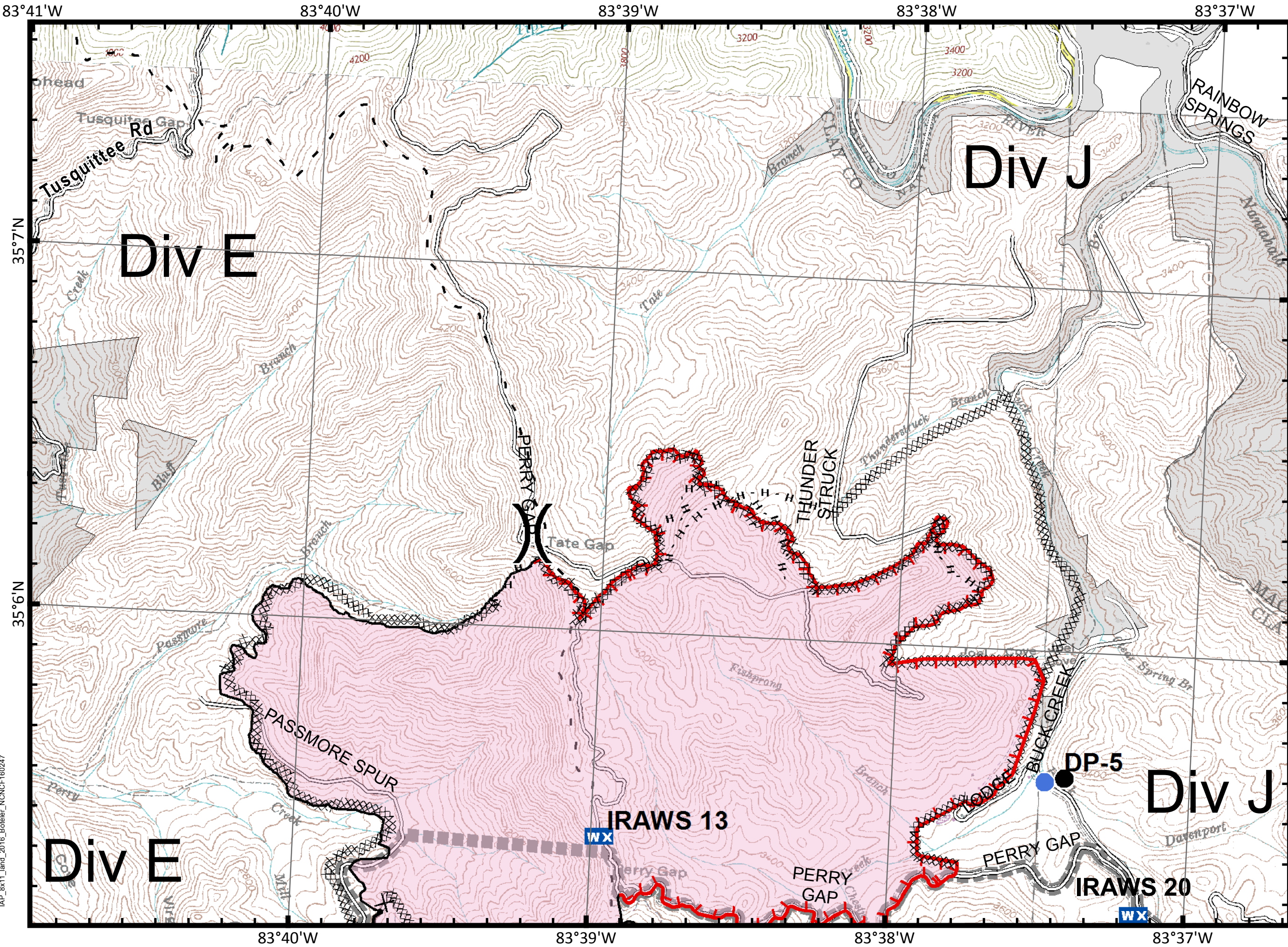
- Structures
- └─┘** Uncontrolled Fire Edge
- ⊗** Completed Dozer Line
- Completed Line
- H** Hand Line
- R** Road as Completed Line
- Planned Secondary Line
- ⊗** Proposed Dozer Line
- Roads_BotelerArea selection

- NantahalaNationalForest_POI
- Bladed Road
- ▬▬▬** Power Line
- ▬▬▬** Trail
- ▬▬▬** Trails
- Ⓜ** Containment Perimeter



Feet

11/15/2016 7:23:12 PM
NC StatePlane NAD83 Feet
C. Roberts, GISS



IAP_8x11_land_2016_Boteler_NCNCF160247