



# Rock Mt. Fire

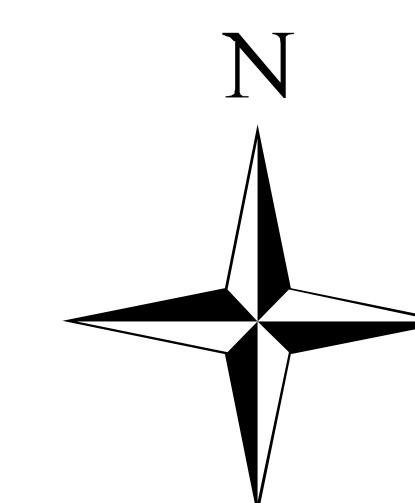
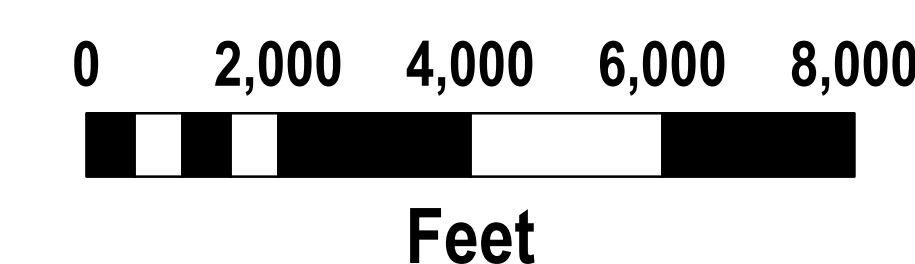
11/16/2016  
Day Shift

Acres as of 11/16/16  
Rock Mt. Fire 7,999 ac

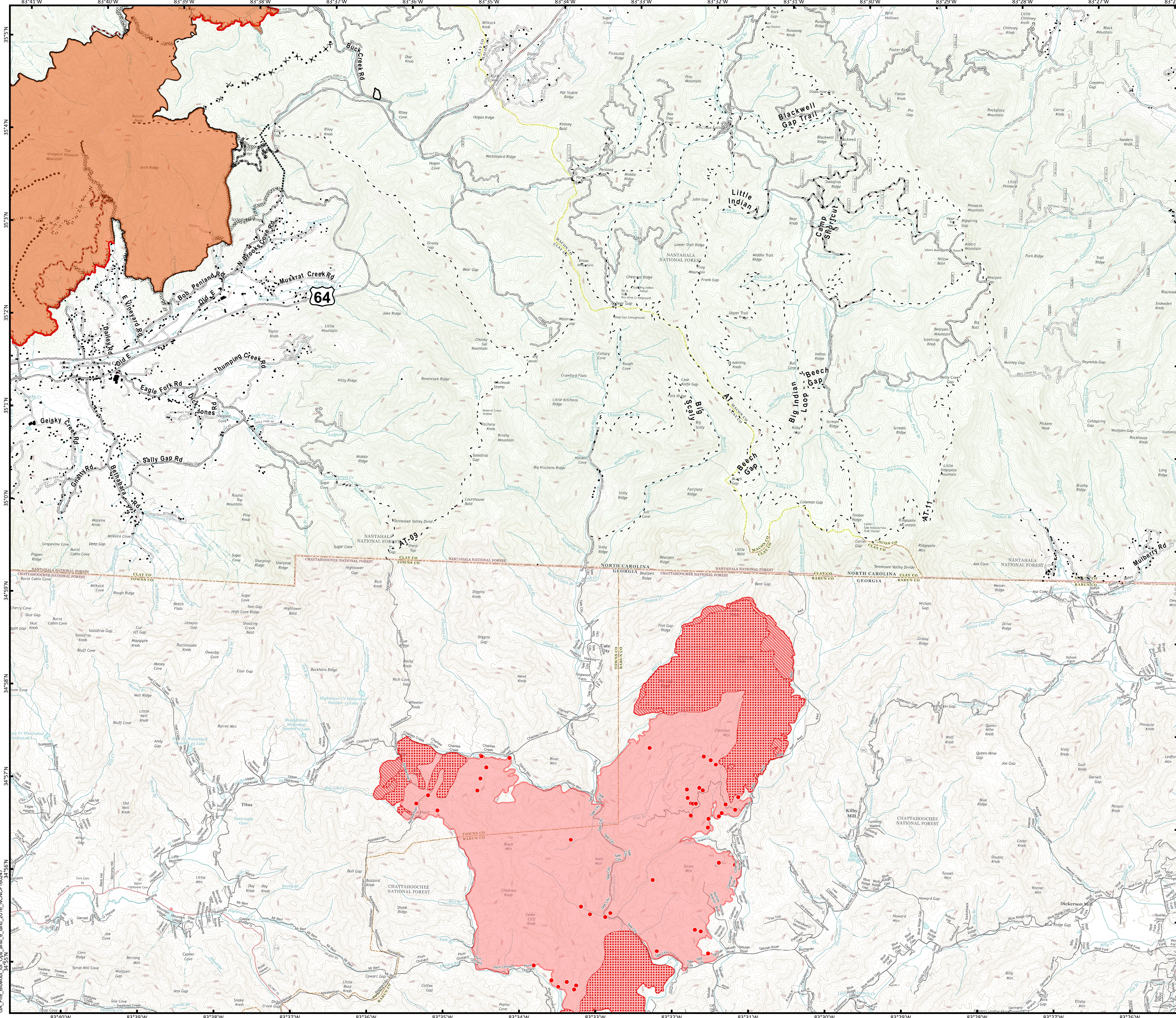
- Uncontrolled Fire Edge
- Completed Dozer Line
- Completed Line
- Hand Line
- Road as Completed Line
- Planned Secondary Line
- Proposed Dozer Line
- Bladed Road
- Power Line
- Trail
- Structure Footprints

## IR flown 0147, 11-16-2016

- Boteler Fire
- 11-16-2016 Isolated Heat Sources
- 11-16-2016 Scattered Heat
- 11-16-2016 Intense Heat
- 11-16-2016 Heat Perimeter



11/16/2016 9:28:23 AM  
NC StatePlane NAD83 Feet  
D. Paris, GISS(T)



GA\_Fire\_Blowout\_for\_Obs\_ansi\_e\_land\_2016\_NGCF160247\_34'55"N