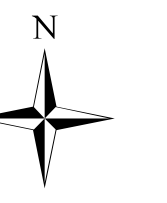




# Tellico Fire Ops Map

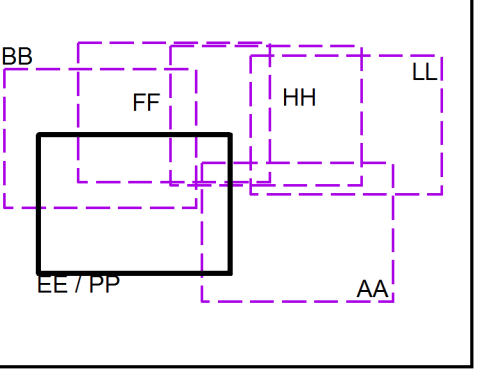
**Div EE /  
Div PP**

**11/16/2016  
Day Shift**

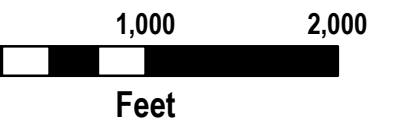
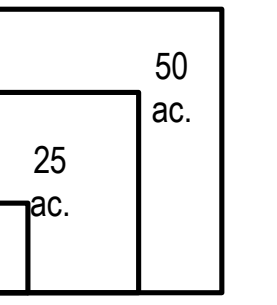


- Branch
- Division
- Uncontrolled Fire Edge
- Completed Dozer Line
- Completed Line
- Hand Line
- Road as Completed Line
- Planned Fire Line
- Proposed Dozer Line
- Drop Point
- Water Source
- Mobile Weather Unit
- Trail
- Trail of Tears
- 750 foot buffer - total width of 1,500 feet
- Structure

### Index Map



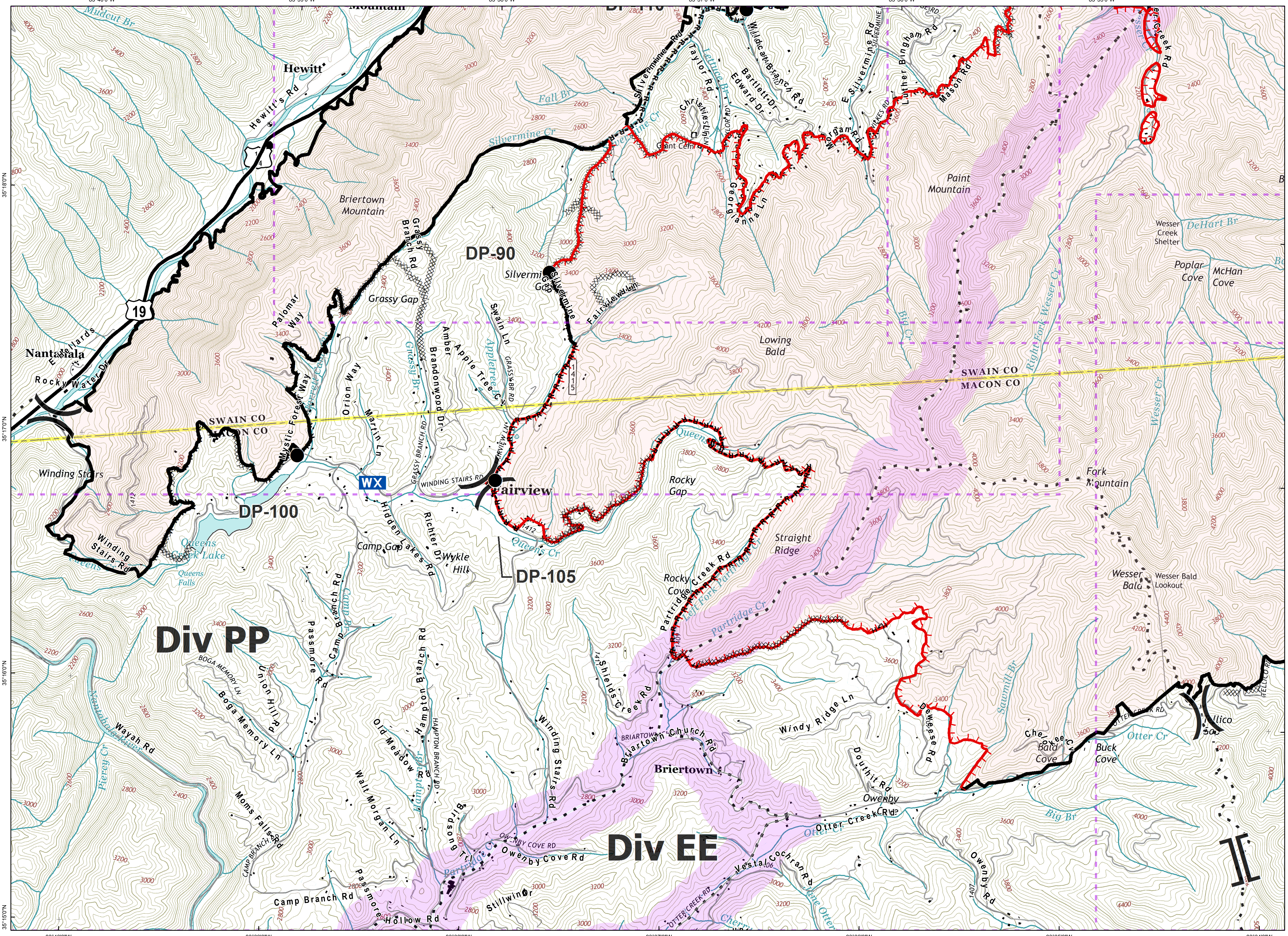
Download a GeoPDF



Information shown is based on the best available data at the time of map production.

Latest Intel: 20161115 @ 1930

20161115 @ 2050  
Map Datum: NAD83 Feet  
Author: D. Jones, GIS



Document Name: ops\_tellico\_20161115\_2050\_ansi\_d\_land\_NCNC160280\_1115day