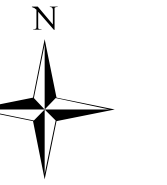




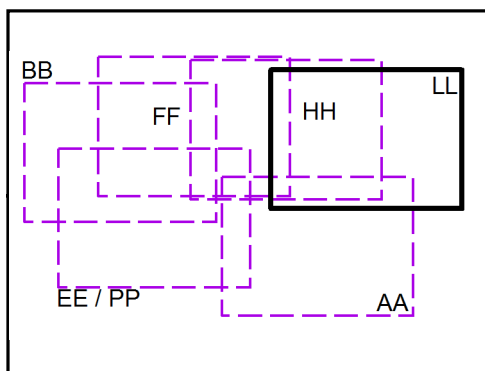
Tellico Fire Ops Map Div LL

11/16/2016
Day Shift

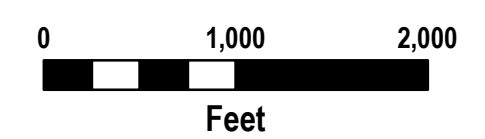
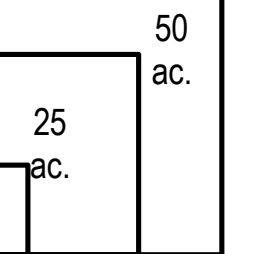


- Branch
- Division
- Uncontrolled Fire Edge
- Completed Dozer Line
- Completed Line
- Hand Line
- Road as Completed Line
- Planned Fire Line
- Proposed Dozer Line
- Drop Point
- Water Source
- Mobile Weather Unit
- Trail
- Trail of Tears
- 750 foot buffer - total width of 1,500 feet
- Structure

Index Map



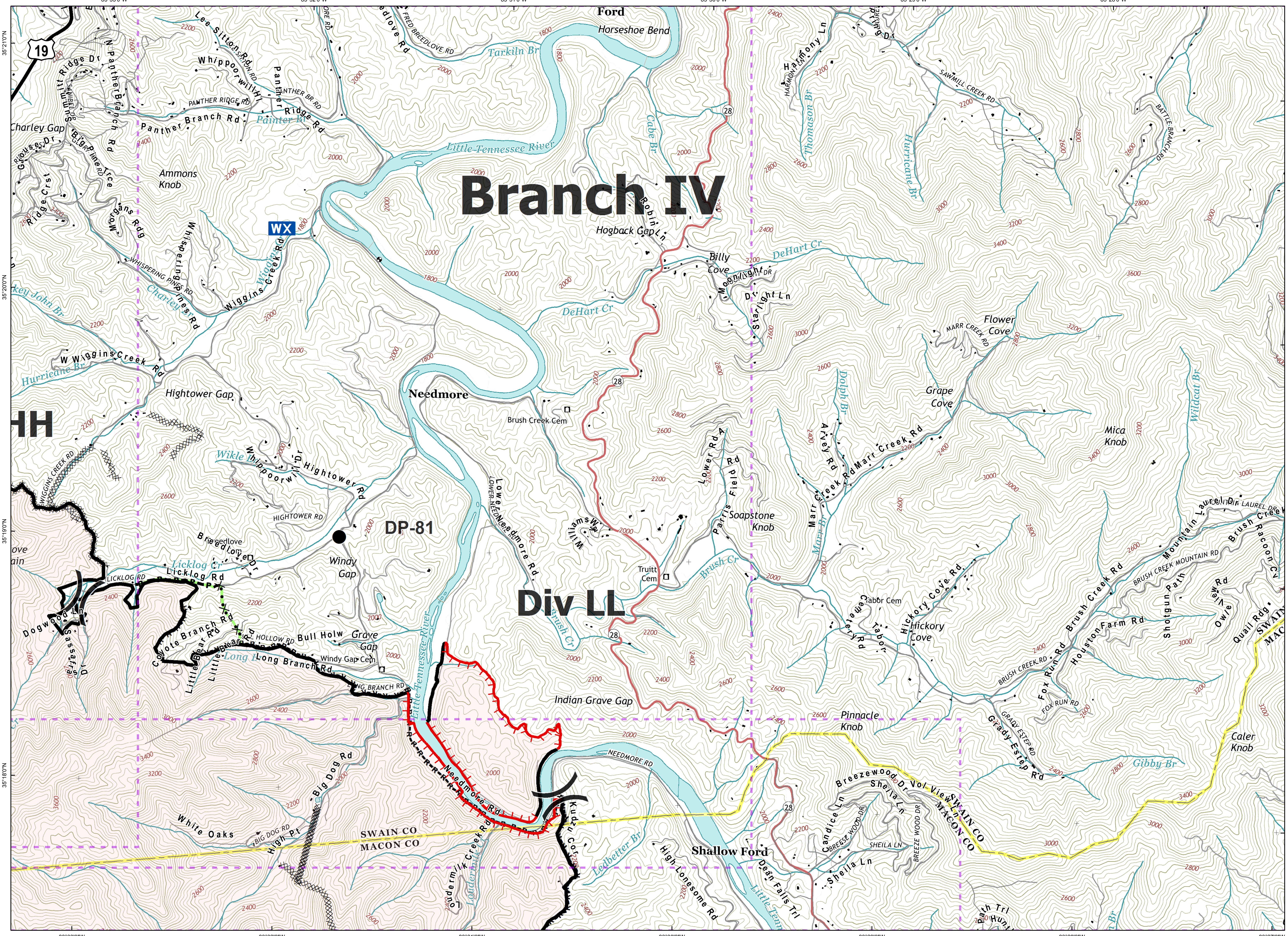
Download a GeoPDF



Information shown is based on the best available data at the time of map production.

Latest Intel: 20161115 @ 1930

20161115 @ 2050
Map Datum: NAD83 Feet
Author: D. Jones, GISS



Document Name: ops_tellico_20161115_2050_ansi_d_land_NCNC160280_1115day