

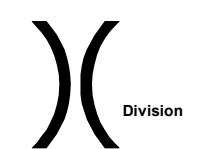
# Boteler Fire

NC-NCF-160247

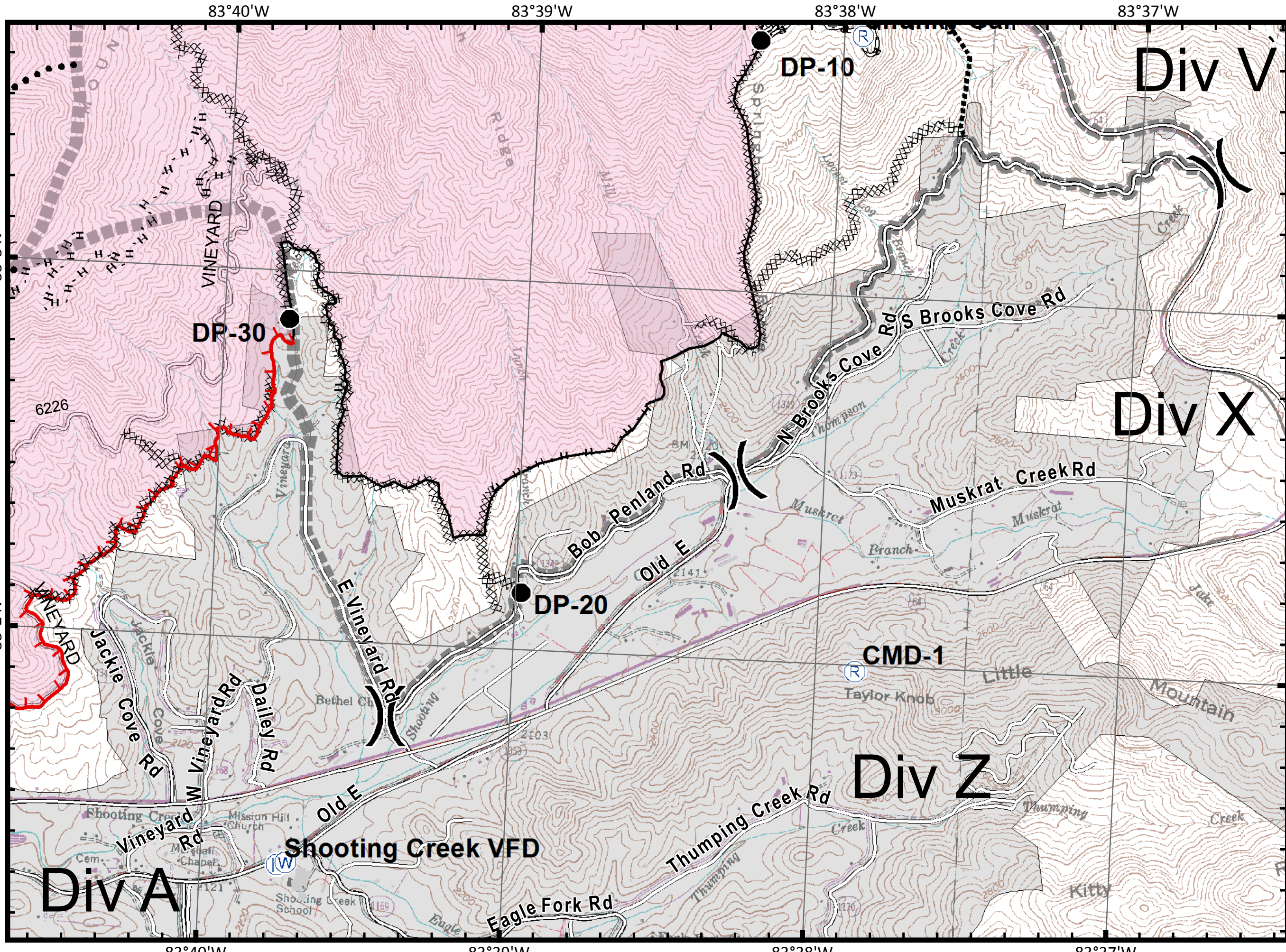
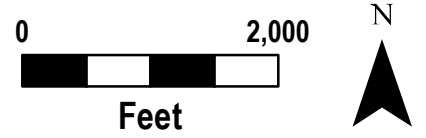
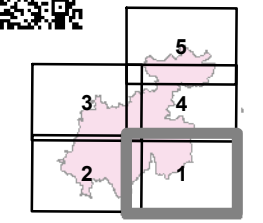
## IAP Tile Div X/Z

11/17/2016  
Day Shift

- Mobile Weather Unit
- MediVac Site
- Drop Point
- Fire Origin
- Helispot
- Repeater
- Water Source
- Fire Station



- Structures
- Uncontrolled Fire Edge
- Completed Dozer Line
- Completed Line
- Hand Line
- Road as Completed Line
- Planned Secondary Line
- Proposed Dozer Line
- Roads\_BotelerArea selection
- NantahalaNationalForest\_POI
- Bladed Road
- Power Line
- Trail
- Trails
- Containment Perimeter



IAP\_8x11\_land\_2016\_Boteler\_NCNCF160247

# Boteler Fire

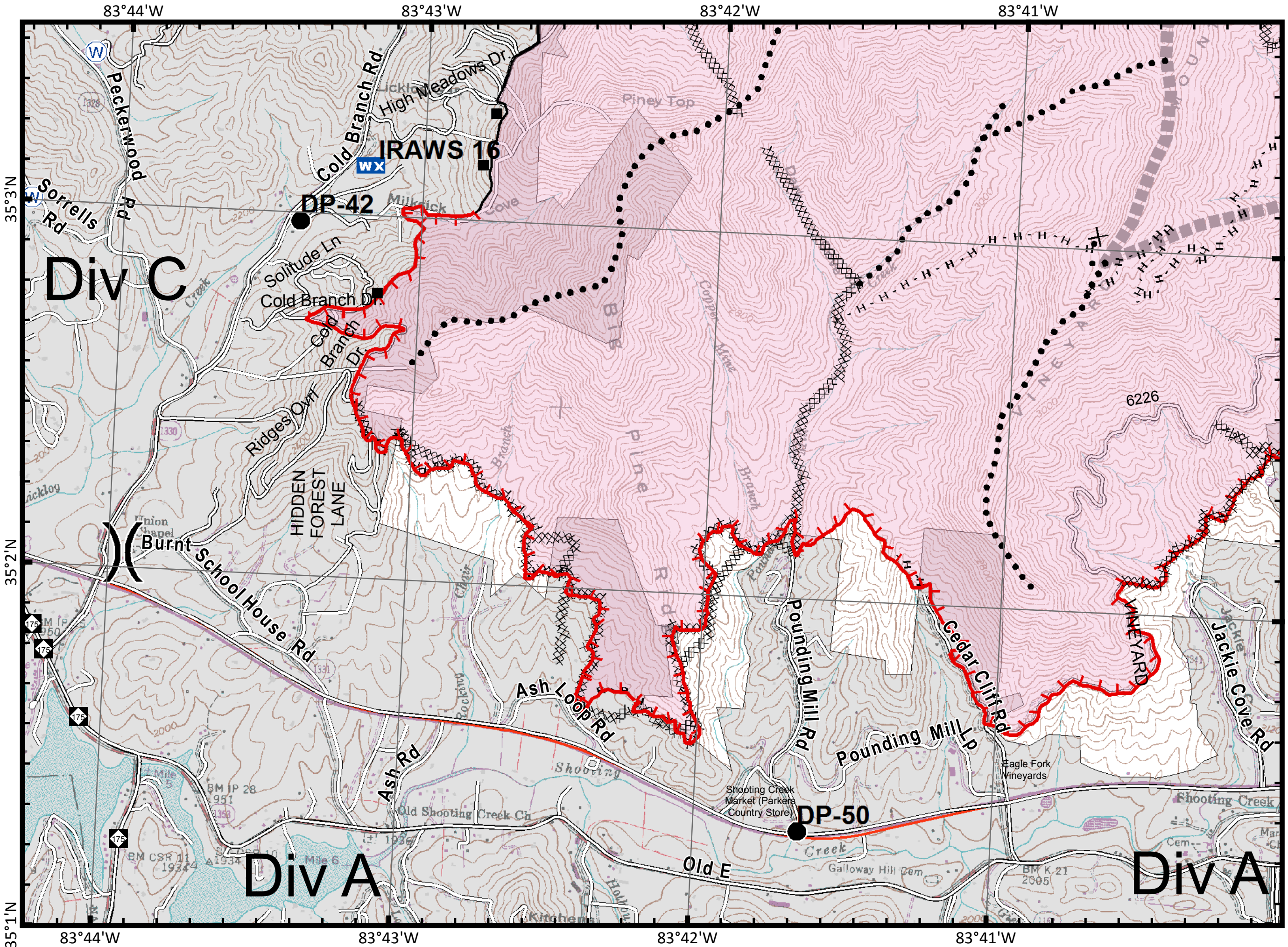
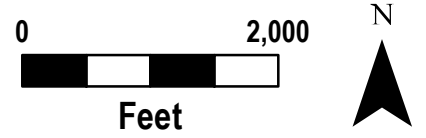
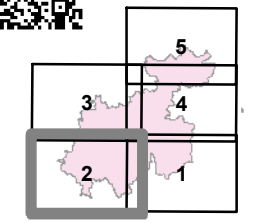
NC-NCF-160247

## IAP Tile Div A/C

11/17/2016  
Day Shift

- WX** Mobile Weather Unit
- U** MediVac Site
- Drop Point
- ⊗** Fire Origin
- Helispot
- Ⓡ** Repeater
- Ⓜ** Water Source
- ⓕ** Fire Station

- ( )** Division
- Structures
- Uncontrolled Fire Edge
- ⊗** Completed Dozer Line
- Completed Line
- H -** Hand Line
- R -** Road as Completed Line
- Planned Secondary Line
- ⊗** Proposed Dozer Line
- Roads\_BotelerArea selection
- NantahalaNationalForest\_POI
- ==** Bladed Road
- Power Line
- Trail
- Containment Perimeter



IAP\_8x11\_land\_2016\_Boteler\_NONCF160247

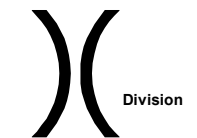
# Boteler Fire

NC-NCF-160247

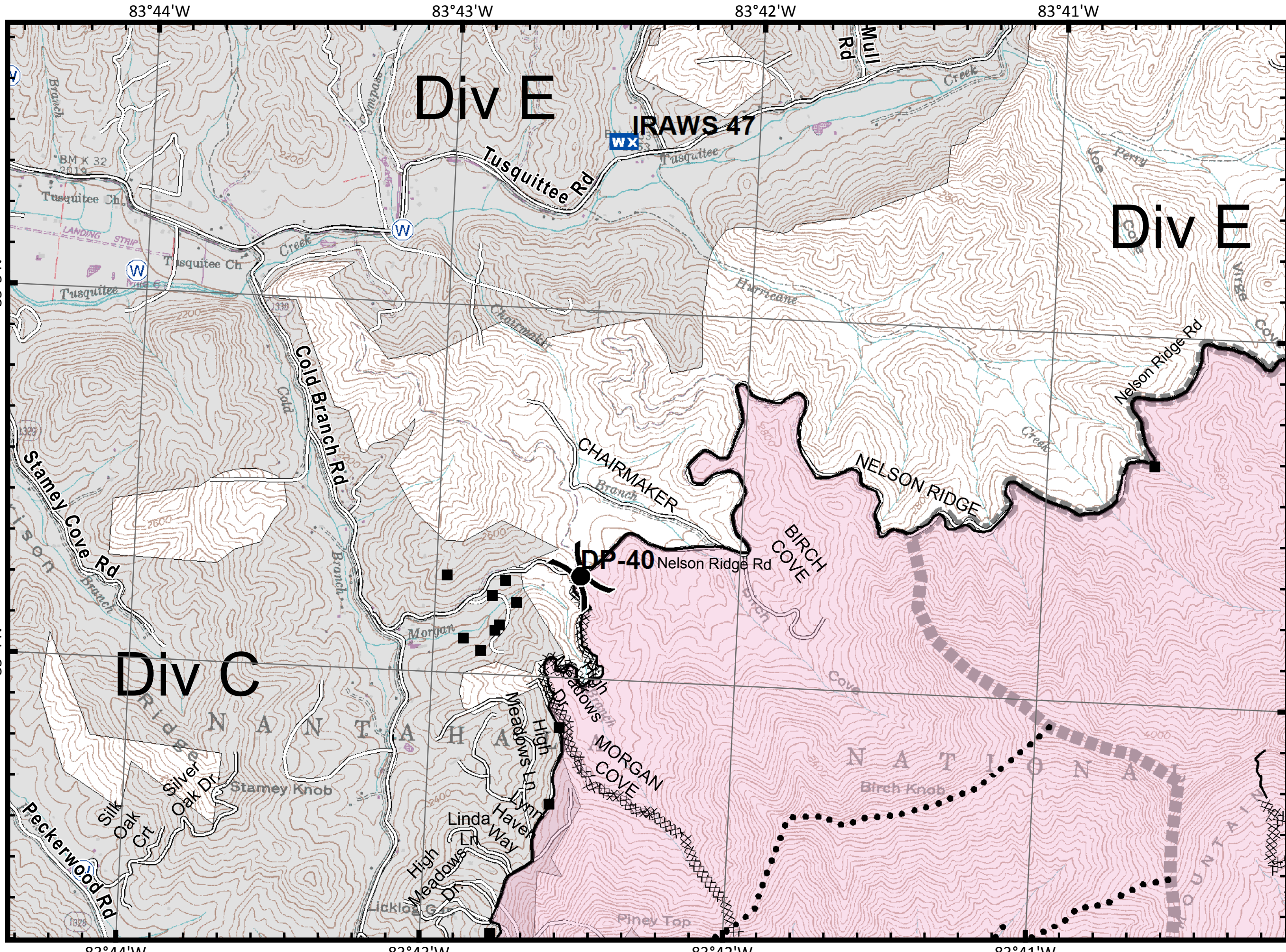
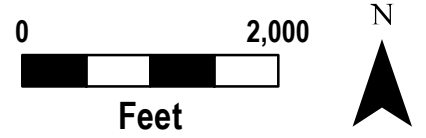
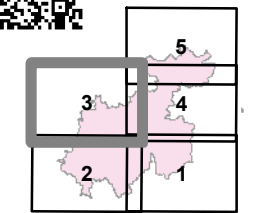
## IAP Tile Div C/E

11/17/2016  
Day Shift

- WX** Mobile Weather Unit
- U** MediVac Site
- Drop Point
- ⊗** Fire Origin
- Helispot
- Ⓡ** Repeater
- Ⓜ** Water Source
- ⓕ** Fire Station



- Structures
- ┌** Uncontrolled Fire Edge
- ⊗** Completed Dozer Line
- Completed Line
- H** Hand Line
- R** Road as Completed Line
- Planned Secondary Line
- ⊗** Proposed Dozer Line
- Roads\_BotelerArea selection
- NantahalaNationalForest\_POI
- ▬** Bladed Road
- ▬** Power Line
- ▬** Trail
- ▬** Trails
- ▬** Containment Perimeter



# Boteler Fire

NC-NCF-160247

IAP Tile Div J/V

11/17/2016  
Day Shift

**WX** Mobile Weather Unit

**U** MediVac Site

**●** Drop Point

**⊗** Fire Origin

**●** Helispot

**Ⓡ** Repeater

**Ⓢ** Water Source

**F** Fire Station

**( )** Division

**■** Structures

**┌** Uncontrolled Fire Edge

**⊗** Completed Dozer Line

**—** Completed Line

**H** Hand Line

**R** Road as Completed Line

**●** Planned Secondary Line

**⊗** Proposed Dozer Line

**—** Roads\_BotelerArea selection

**—** NantahalaNationalForest\_POI

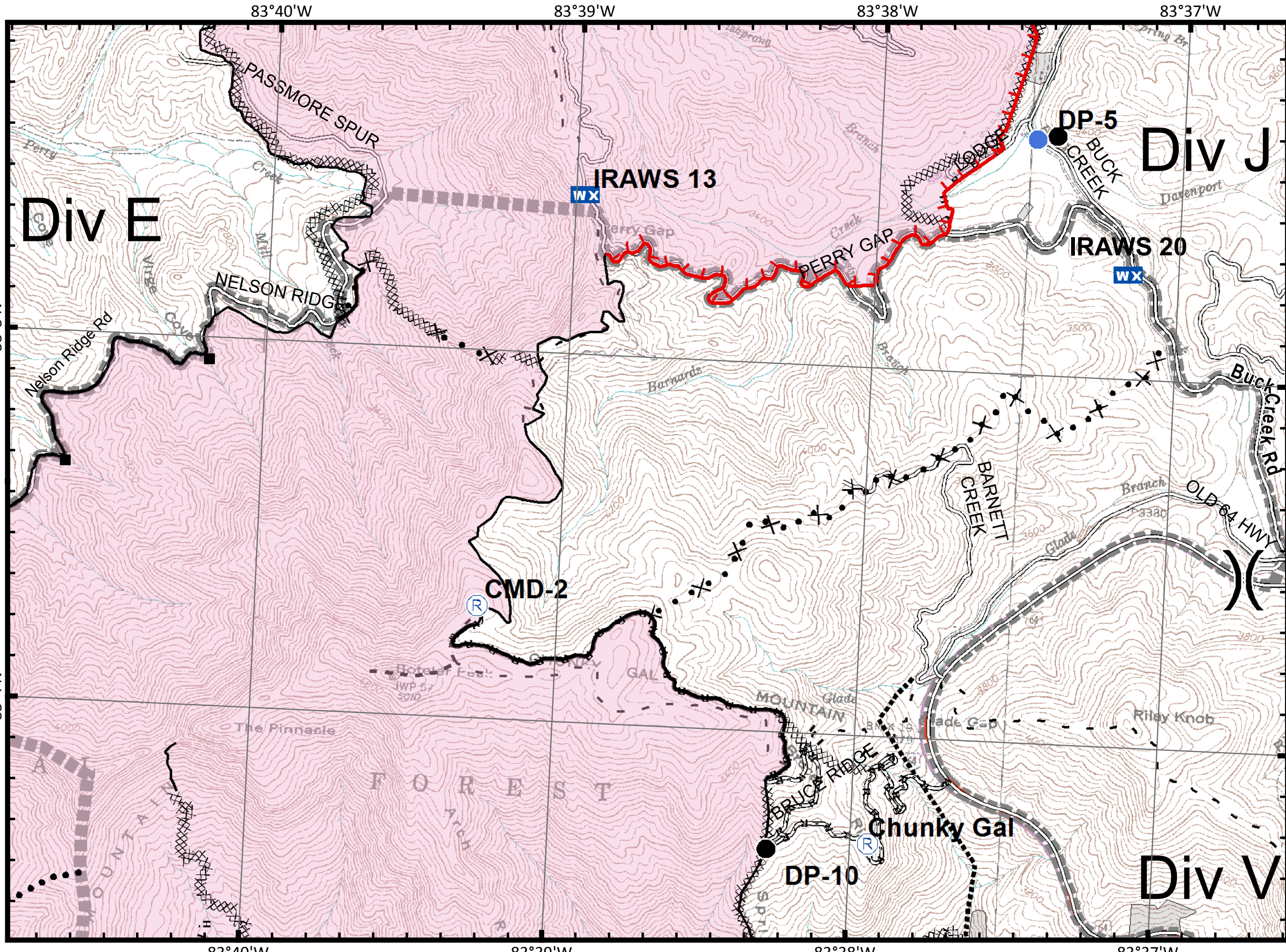
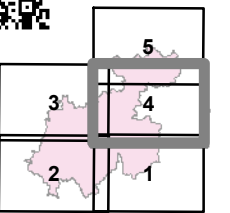
**—** Bladed Road

**—** Power Line

**—** Trail

**—** Trails

**—** Containment Perimeter



# Boteler Fire

NC-NCF-160247

IAP Tile Div E/J

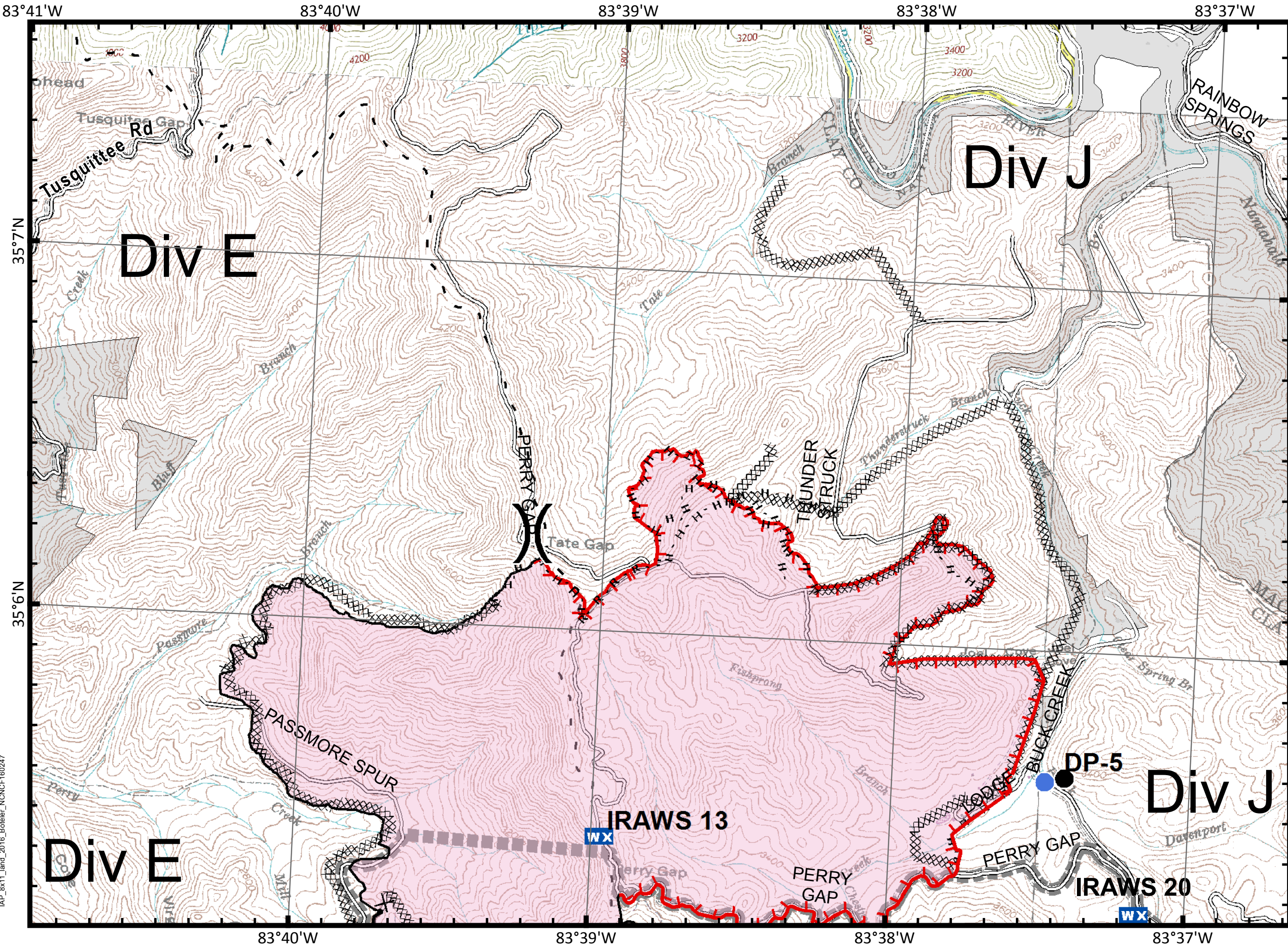
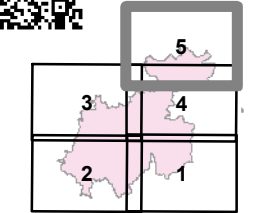
11/17/2016  
Day Shift

- Mobile Weather Unit
- MediVac Site
- Drop Point
- Fire Origin
- Helispot
- Repeater
- Water Source
- Fire Station

Division

- Structures
- Uncontrolled Fire Edge
- Completed Dozer Line
- Completed Line
- Hand Line
- Road as Completed Line
- Planned Secondary Line
- Proposed Dozer Line
- Roads\_BotelerArea selection

- Nantahala National Forest POI
- Bladed Road
- Power Line
- Trail
- Trails
- Containment Perimeter



IAP\_8x11\_land\_2016\_Boteler\_NCNCF160247