



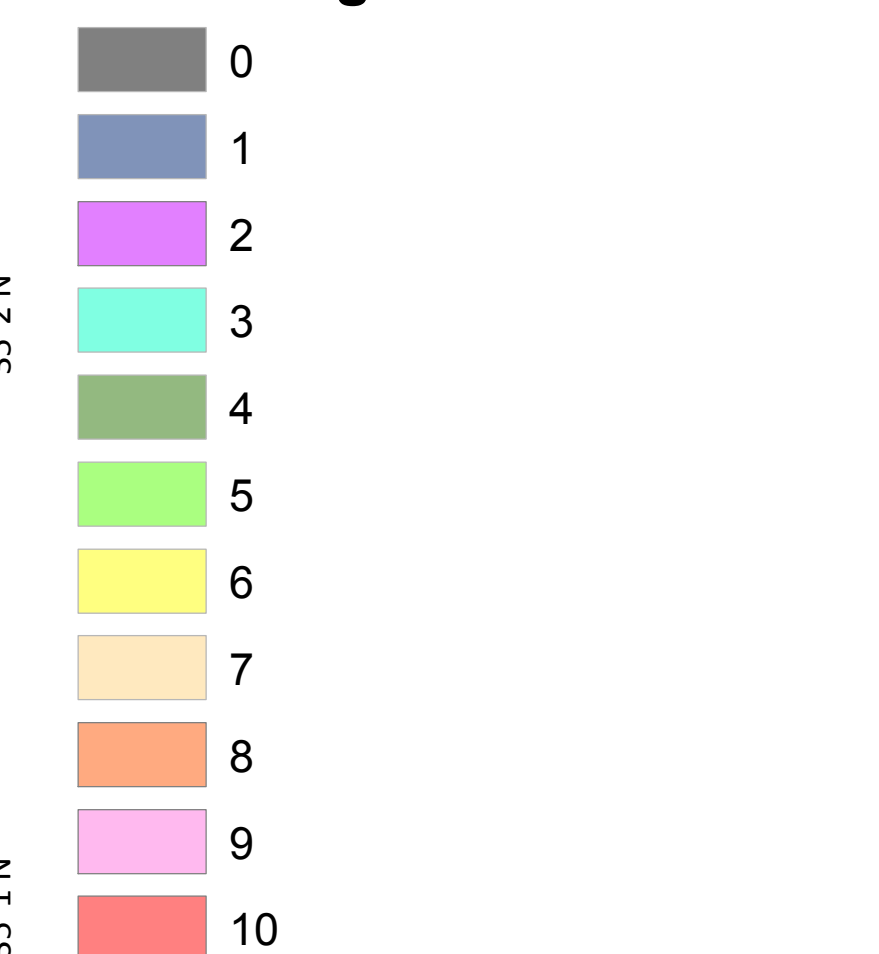
Rock Mt. Fire

WFDSS NTFB Analysis

11/17/2016
Day Shift

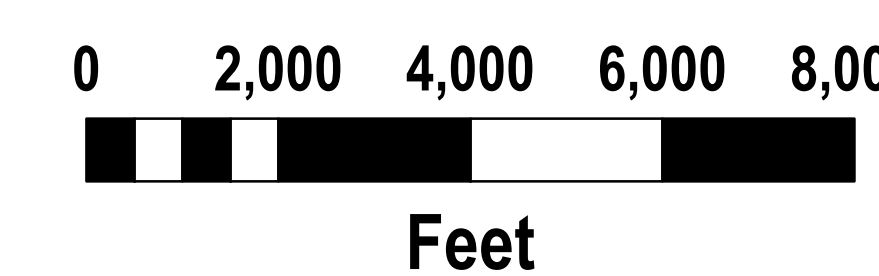
Acres as of 11/16/16
Rock Mt. Fire 7,999 ac

Burn Progression Per Shift

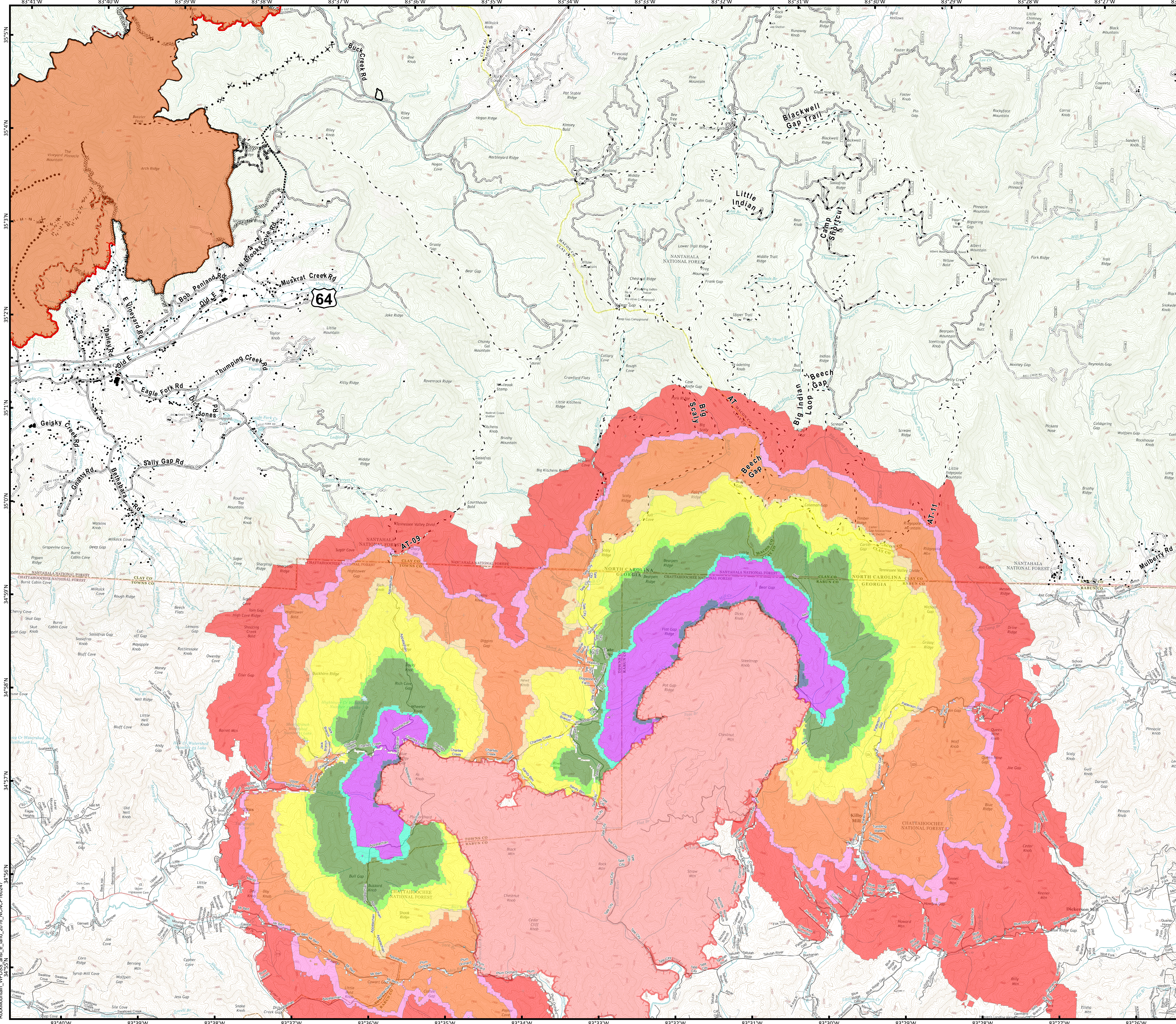


IR flown 0147, 11-16-2016

- Boteler Fire
- 11-16-2016 Heat Perimeter
- Uncontrolled Fire Edge
- Completed Dozer Line
- Completed Line
- Hand Line
- Road as Completed Line
- Planned Secondary Line
- Proposed Dozer Line
- Bladed Road
- Power Line
- Trail
- Structure Footprints



11/16/2016 8:47:52 PM
NC StatePlane NAD83 Feet
C. Roberts, GISS



RockMountain_WFDSS_ansi_e_land_2016_NCNCIF60247