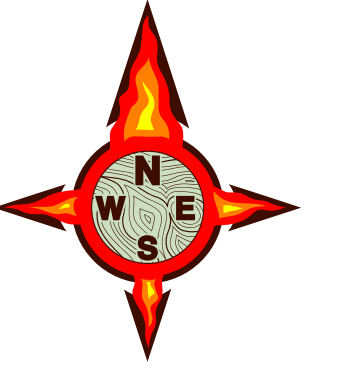




Boteler Fire

11/17/2016 Day Shift

Approximate Infrared Acres as of 11/16/16
Boteler Fire 8,975 ac
Buck Creek 8 ac



INFRARED Briefing Map

NC-NCF-160247

- Division
- Drop Point
- Fire Origin
- Hellspot
- Repeater
- Water Source
- Mobile Weather Unit
- MediVac Site
- Uncontrolled Fire Edge
- Completed Dozer Line
- Completed Line
- Hand Line
- Road as Completed Line
- Planned Secondary Line
- Proposed Dozer Line
- Bladed Road
- Power Line
- Trail
- Containment Perimeter
- Structure Footprints

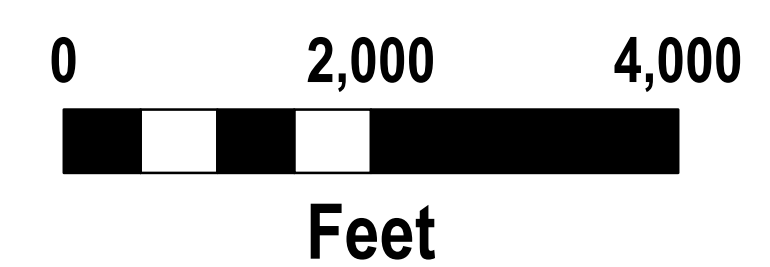
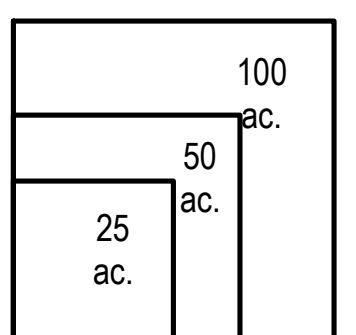
IR flown 2053, 11-16-2016

- 11-16-2016 Isolated Heat Sources
- 11-16-2016 Intense Heat
- 11-16-2016 Heat Perimeter

To use a GeoPDF, Install PDF Maps App, by Avenza, available for Apple, Android & Windows Mobile Devices

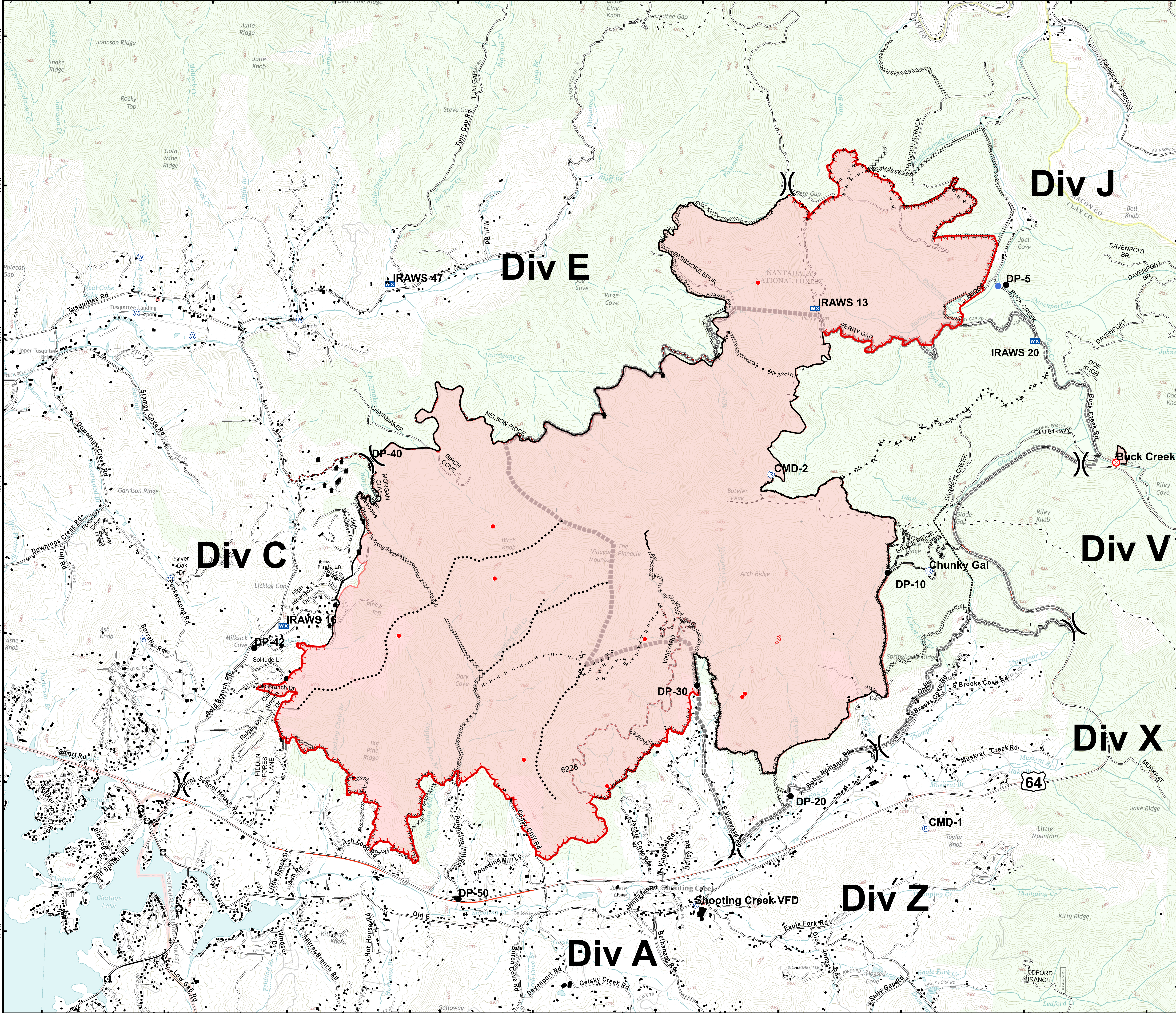


Download a GeoPDF



Information shown is based on the best available data at the time of map production

11/17/2016 6:19:18 AM
NC StatePlane NAD83 Feet
C. Roberts, GISS



briefing_IR_ansi_e_land_2016_Boteler_NCNC160247