

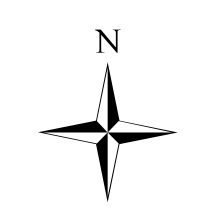


# Tellico Fire

## Ops Map

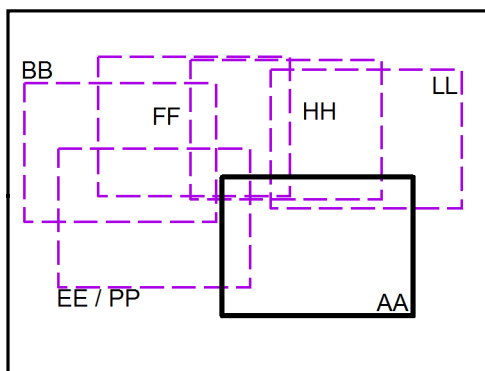
### Div AA

11/17/2016  
Day Shift

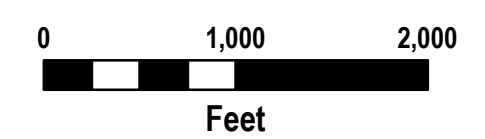
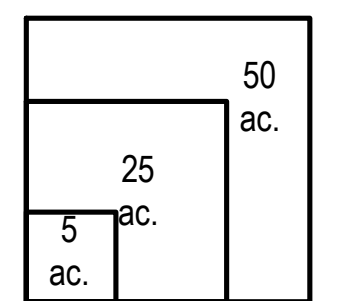


- Branch
- Division
- Uncontrolled Fire Edge
- Completed Dozer Line
- Completed Line
- Hand Line
- Road as Completed Line
- Planned Fire Line
- Proposed Dozer Line
- Drop Point
- Water Source
- Mobile Weather Unit
- Trail
- Trail of Tears
- 750 foot buffer - total width of 1,500 feet
- Structure

#### Index Map



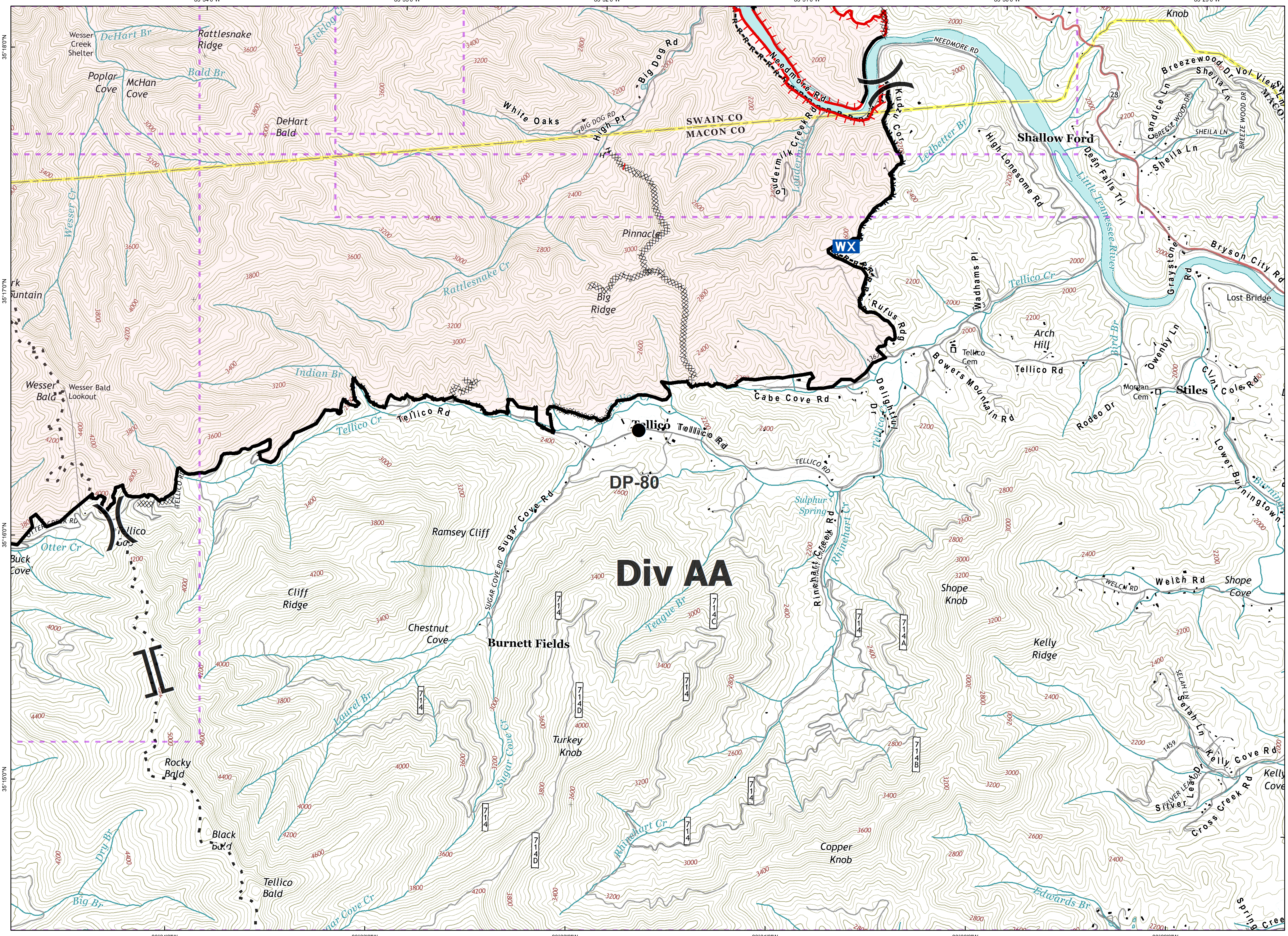
Download a GeoPDF



Information shown is based on the best available data at the time of map production.

Latest Intel: 20161116 @ 1930

20161116 @ 2050  
Map Datum: NAD83 Feet  
Author: D. Jones, GISS



Document Name: ops\_tellico\_20161116\_2035\_ansi\_d\_land\_NCNC160280\_1117day



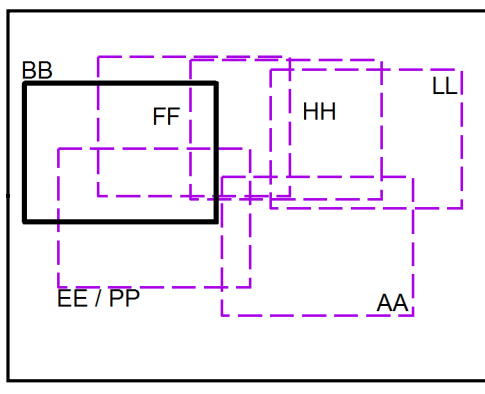
# Tellico Fire Ops Map Div BB

11/17/2016  
Day Shift

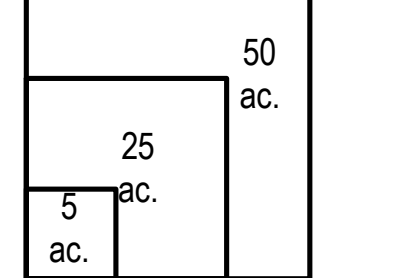


- Branch
- Division
- Uncontrolled Fire Edge
- Completed Dozer Line
- Completed Line
- Hand Line
- Road as Completed Line
- Planned Fire Line
- Proposed Dozer Line
- Drop Point
- Water Source
- Mobile Weather Unit
- Trail
- Trail of Tears
- 750 foot buffer - total width of 1,500 feet
- Structure

### Index Map



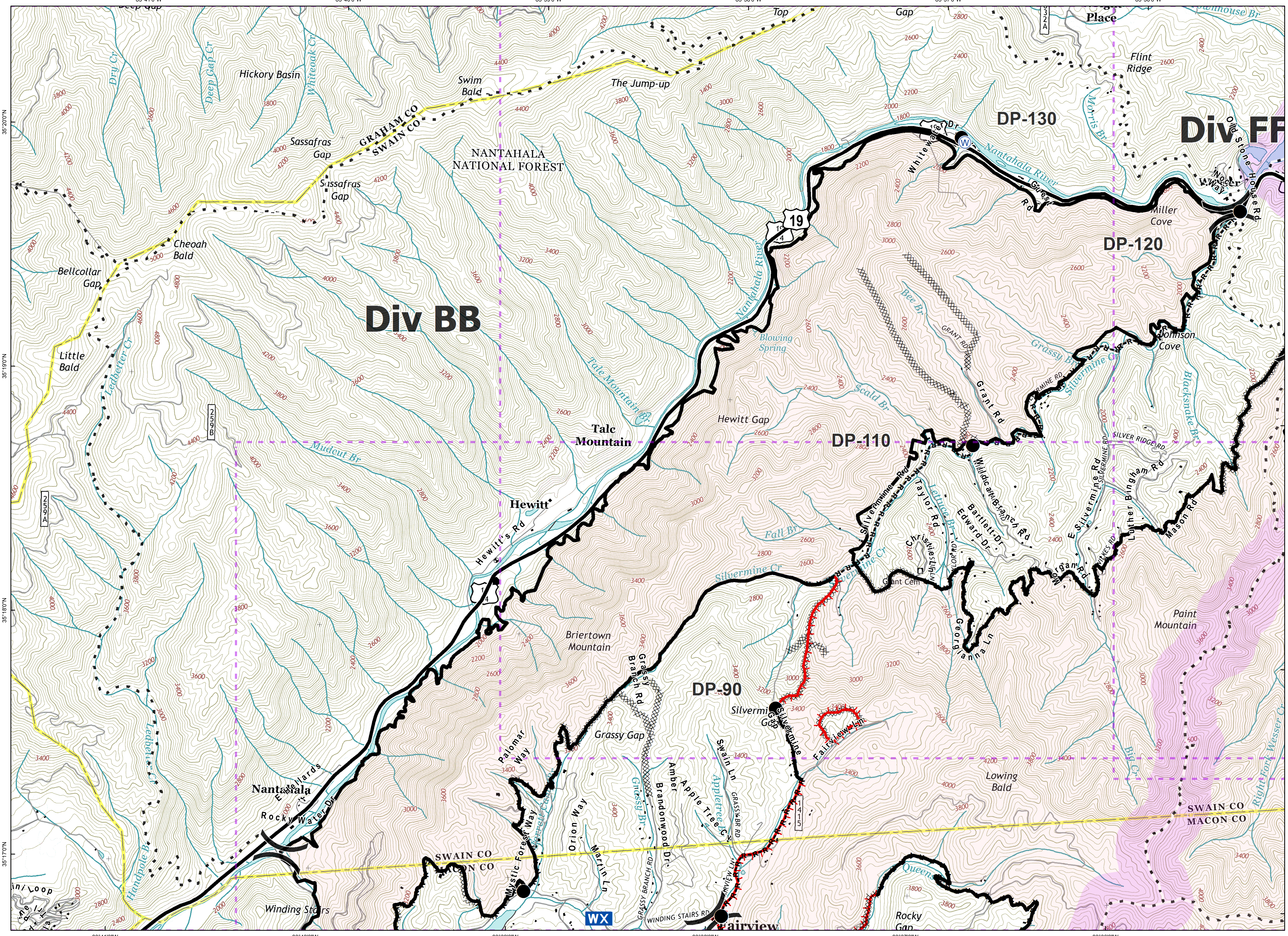
Download a GeoPDF



Information shown is based on the best available data at the time of map production.

Latest Intel: 20161116 @ 1930

20161116 @ 2050  
Map Datum: NAD83 Feet  
Author: D. Jones, GIS



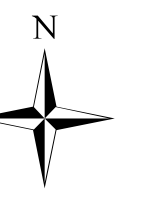
Document Name: ops\_tellico\_20161116\_2035\_ansi\_d\_land\_NCNC160280\_1117day



# Tellico Fire Ops Map

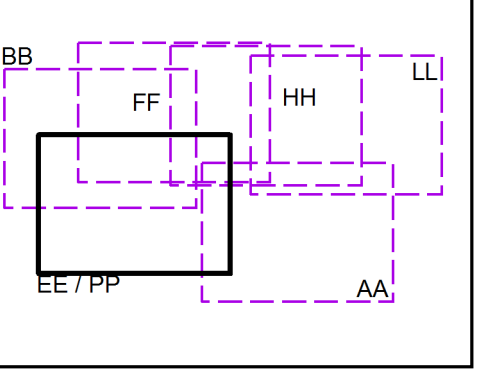
**Div EE /  
Div PP**

**11/17/2016  
Day Shift**

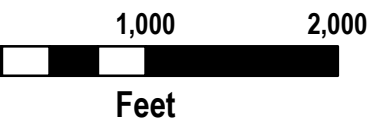
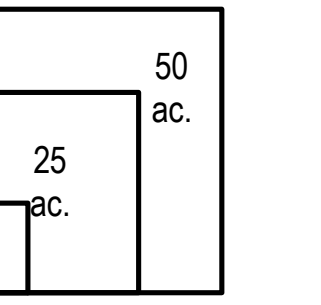


- Branch
- Division
- Uncontrolled Fire Edge
- Completed Dozer Line
- Completed Line
- Hand Line
- Road as Completed Line
- Planned Fire Line
- Proposed Dozer Line
- Drop Point
- Water Source
- Mobile Weather Unit
- Trail
- Trail of Tears
- 750 foot buffer - total width of 1,500 feet
- Structure

### Index Map



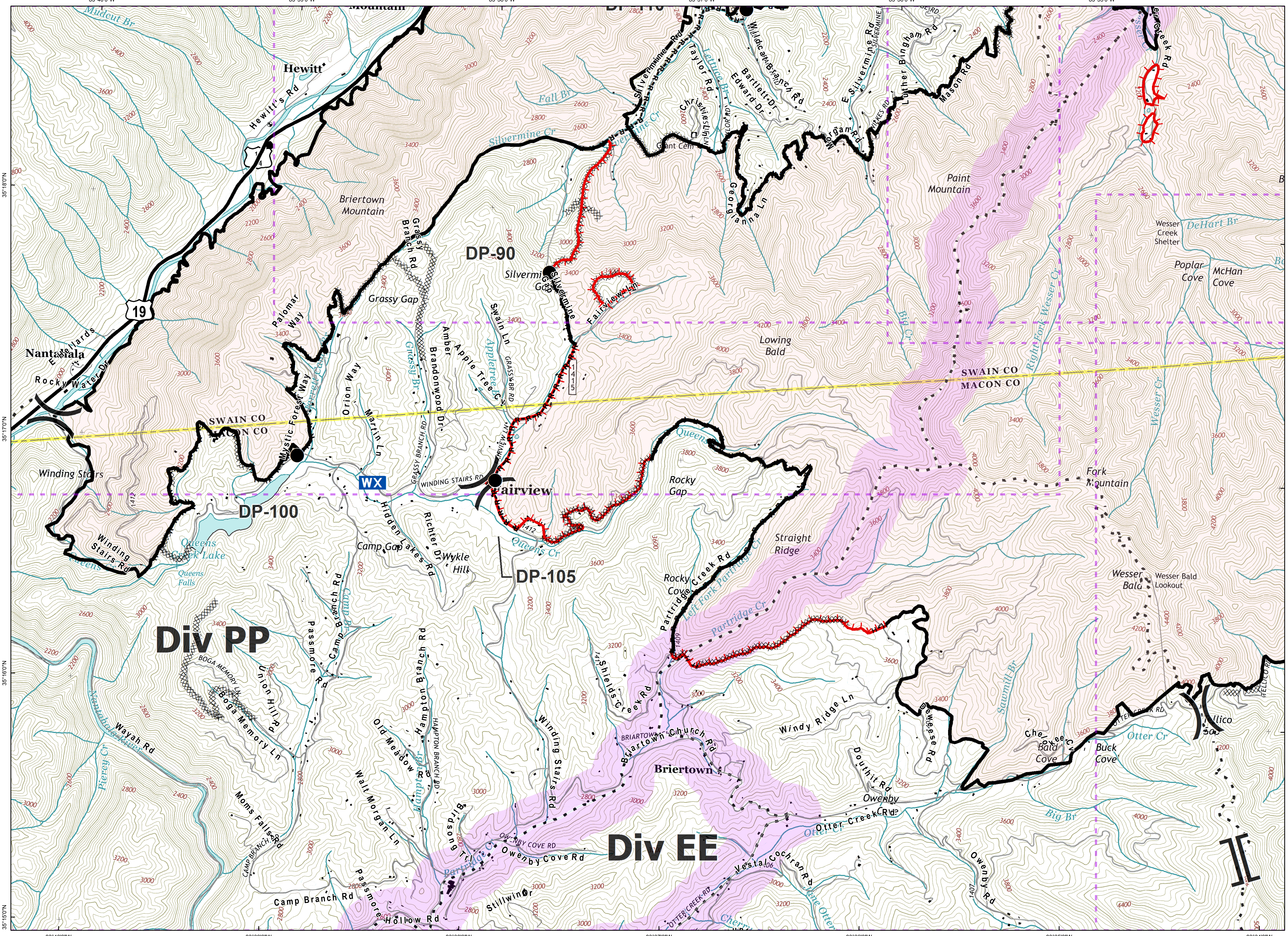
Download a GeoPDF



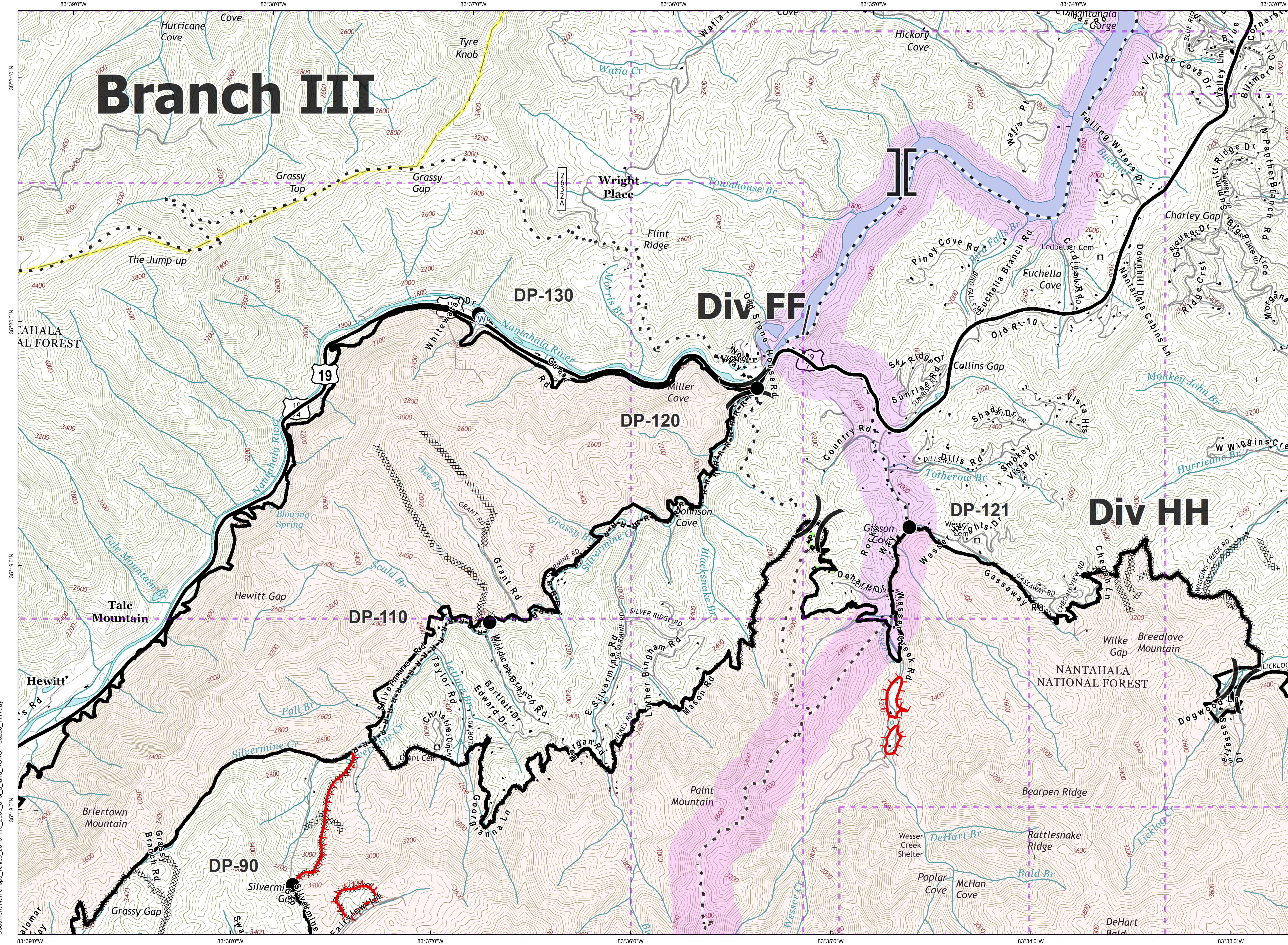
Information shown is based on the best available data at the time of map production.

Latest Intel: 20161116 @ 1930

20161116 @ 2050  
Map Datum: NAD83 Feet  
Author: D. Jones, GISS

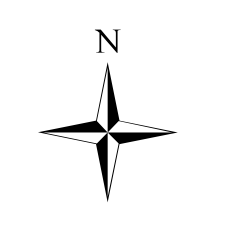


Document Name: ops\_tellico\_20161116\_2035\_ansi\_d\_land\_NCNC160280\_1117day



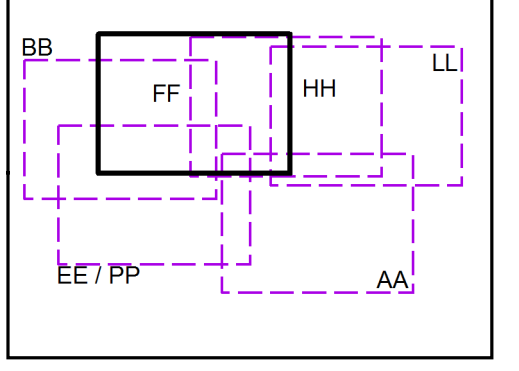
**Tellico Fire**  
**Ops Map**  
**Div FF**

11/17/2016  
 Day Shift

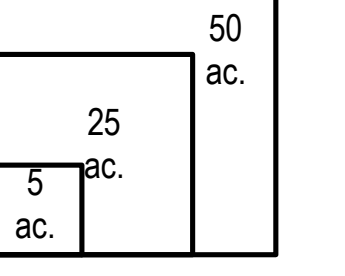


- Branch
- Division
- Uncontrolled Fire Edge
- Completed Dozer Line
- Completed Line
- Hand Line
- Road as Completed Line
- Planned Fire Line
- Proposed Dozer Line
- Drop Point
- Water Source
- Mobile Weather Unit
- Trail
- Trail of Tears
- 750 foot buffer - total width of 1,500 feet
- Structure

**Index Map**



Download a GeoPDF

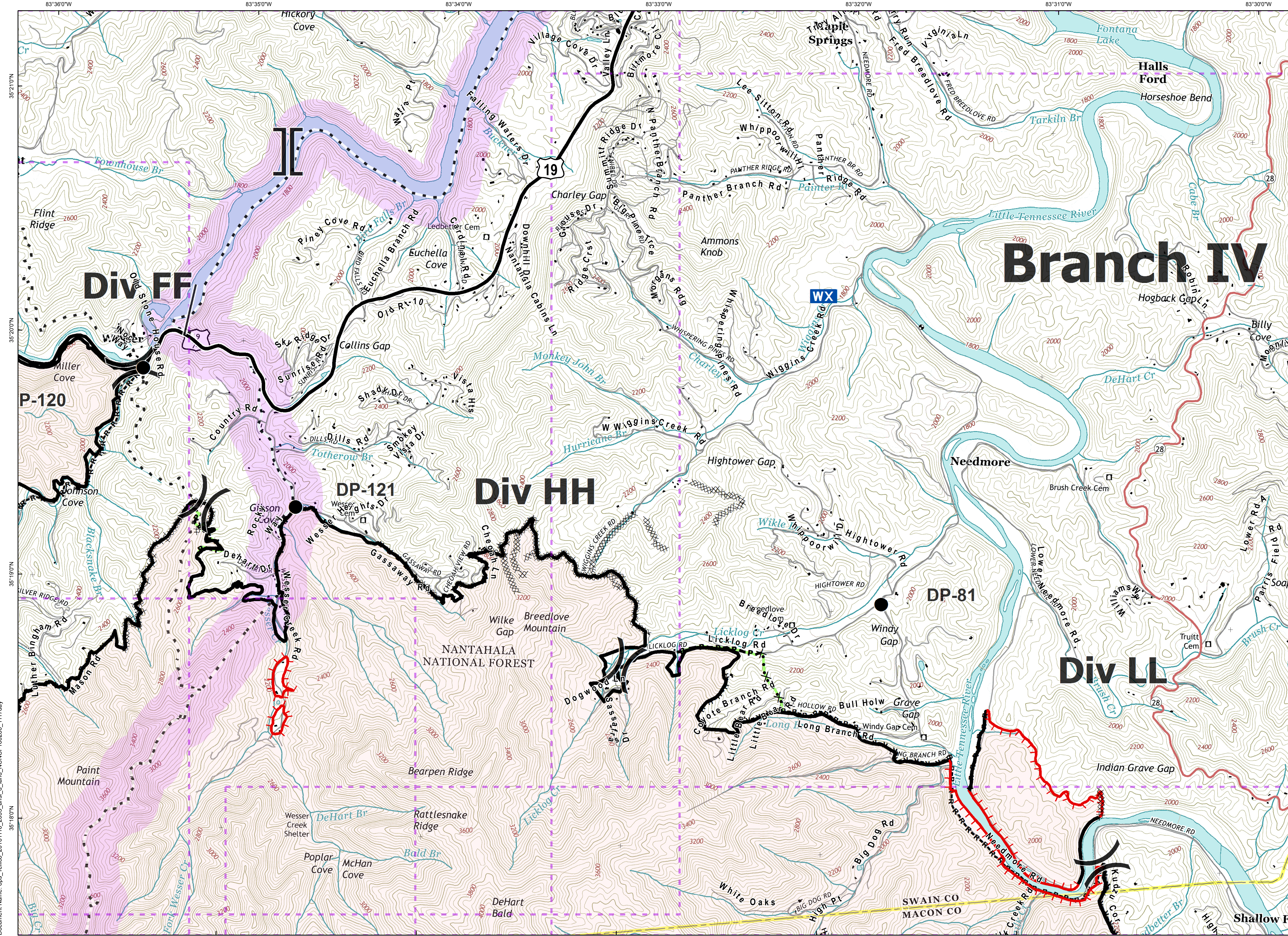


Information shown is based on the best available data at the time of map production.

Latest Intel: 20161116 @ 1930

20161116 @ 2050  
 Map Datum: NAD83 Feet  
 Author: D. Jones, GIS

Document Name: ops\_tellico\_20161116\_2035\_ansi\_d\_land\_NCNC160280\_1117day

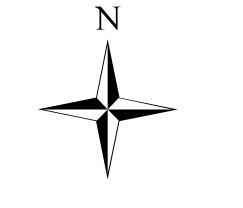


# Tellico Fire

## Ops Map

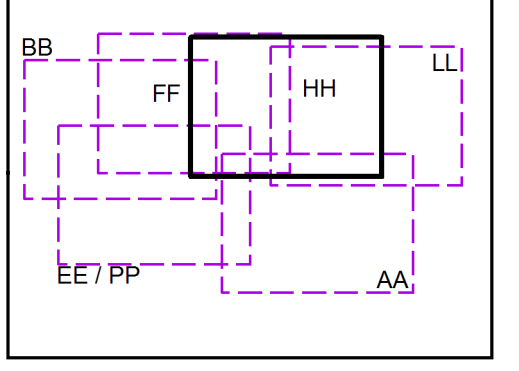
### Div HH

11/17/2016  
Day Shift

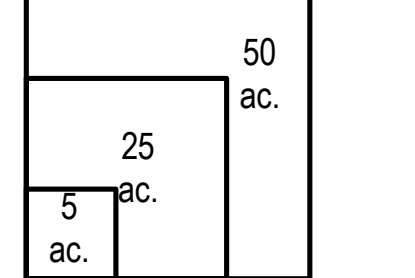


- Branch
- Division
- Uncontrolled Fire Edge
- Completed Dozer Line
- Completed Line
- Hand Line
- Road as Completed Line
- Planned Fire Line
- Proposed Dozer Line
- Drop Point
- Water Source
- Mobile Weather Unit
- Trail
- Trail of Tears
- 750 foot buffer - total width of 1,500 feet
- Structure

#### Index Map



Download a GeoPDF



0 1,000 2,000  
Feet

Information shown is based on the best available data at the time of map production.

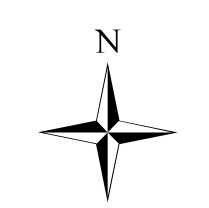
Latest Intel: 20161116 @ 1930

Document Name: ops\_tellico\_20161116\_2035\_ansi\_d\_land\_NCNC160280\_1117day



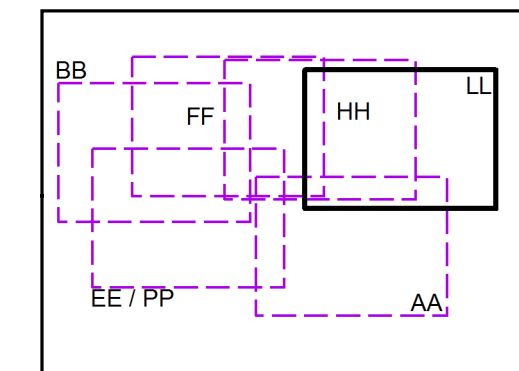
**Tellico Fire**  
**Ops Map**  
**Div LL**

11/17/2016  
 Day Shift

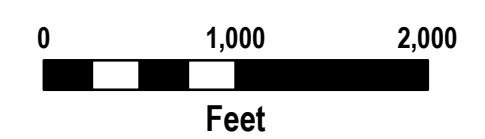
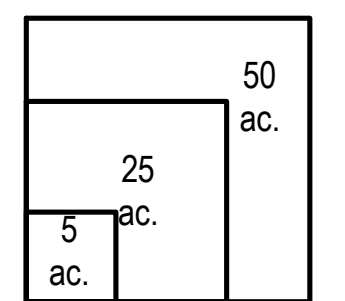


- Branch
- Division
- Uncontrolled Fire Edge
- Completed Dozer Line
- Completed Line
- Hand Line
- Road as Completed Line
- Planned Fire Line
- Proposed Dozer Line
- Drop Point
- Water Source
- Mobile Weather Unit
- Trail
- Trail of Tears
- 750 foot buffer - total width of 1,500 feet
- Structure

**Index Map**



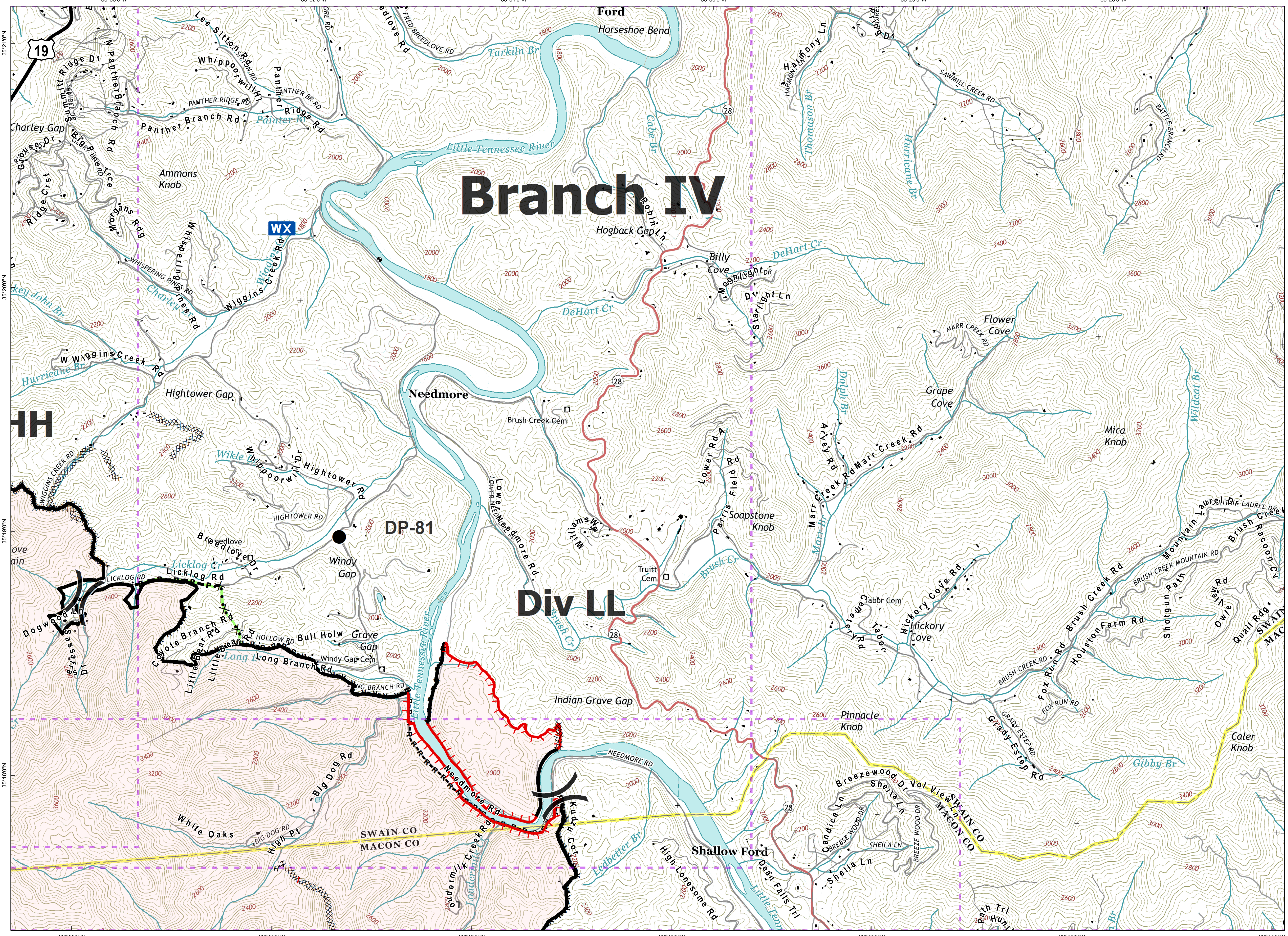
Download a GeoPDF



Information shown is based on the best available data at the time of map production.

Latest Intel: 20161116 @ 1930

20161116 @ 2050  
 Map Datum: NAD83 Feet  
 Author: D. Jones, GISS

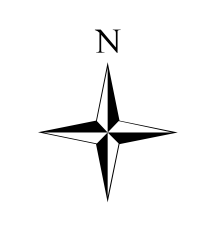


Document Name: ops\_tellico\_20161116\_2035\_ansi\_d\_land\_NCNC160280\_1117day



# Muskrat Fire Ops Map

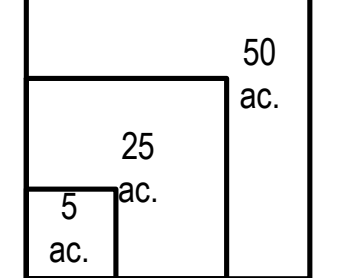
11/17/2016  
Day Shift



- Uncontrolled Fire Edge
- Completed Dozer Line
- Completed Line
- Hand Line
- Road as Completed Line
- Trail
- Trail of Tears  
750 foot buffer - total width of 1,500 feet
- Structure



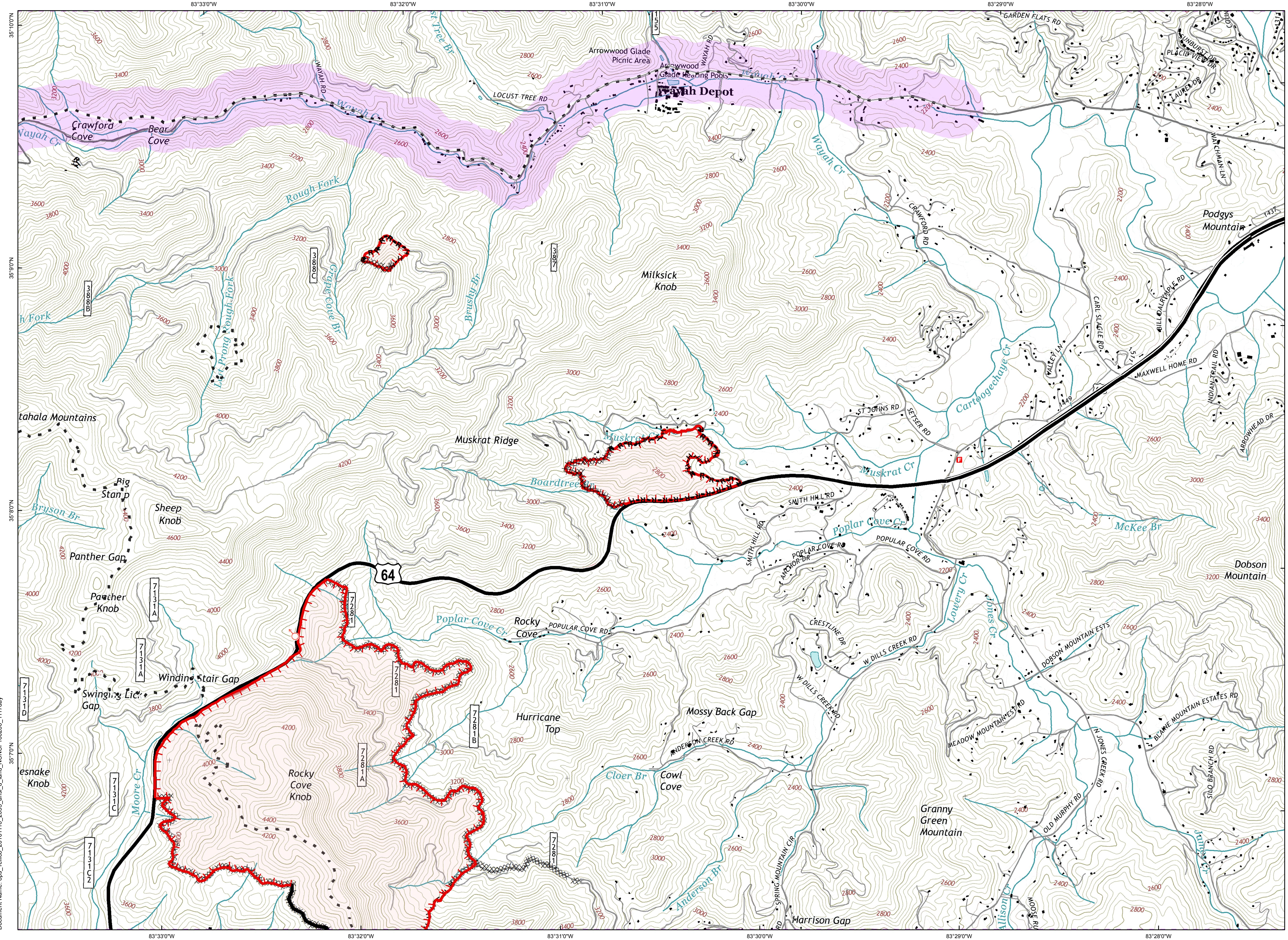
Download a GeoPDF



Information shown is based on the best available data at the time of map production.

Latest Intel: 20161116 @ 1930

20161116 @ 2050  
Map Datum: NAD83 Feet  
Author: D. Jones, GIS



Document Name: ops\_tellico\_20161116\_2035\_ansi\_d\_land\_NCNC160280\_1117day