

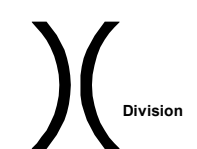
Boteler Fire






NC-NCF-160247

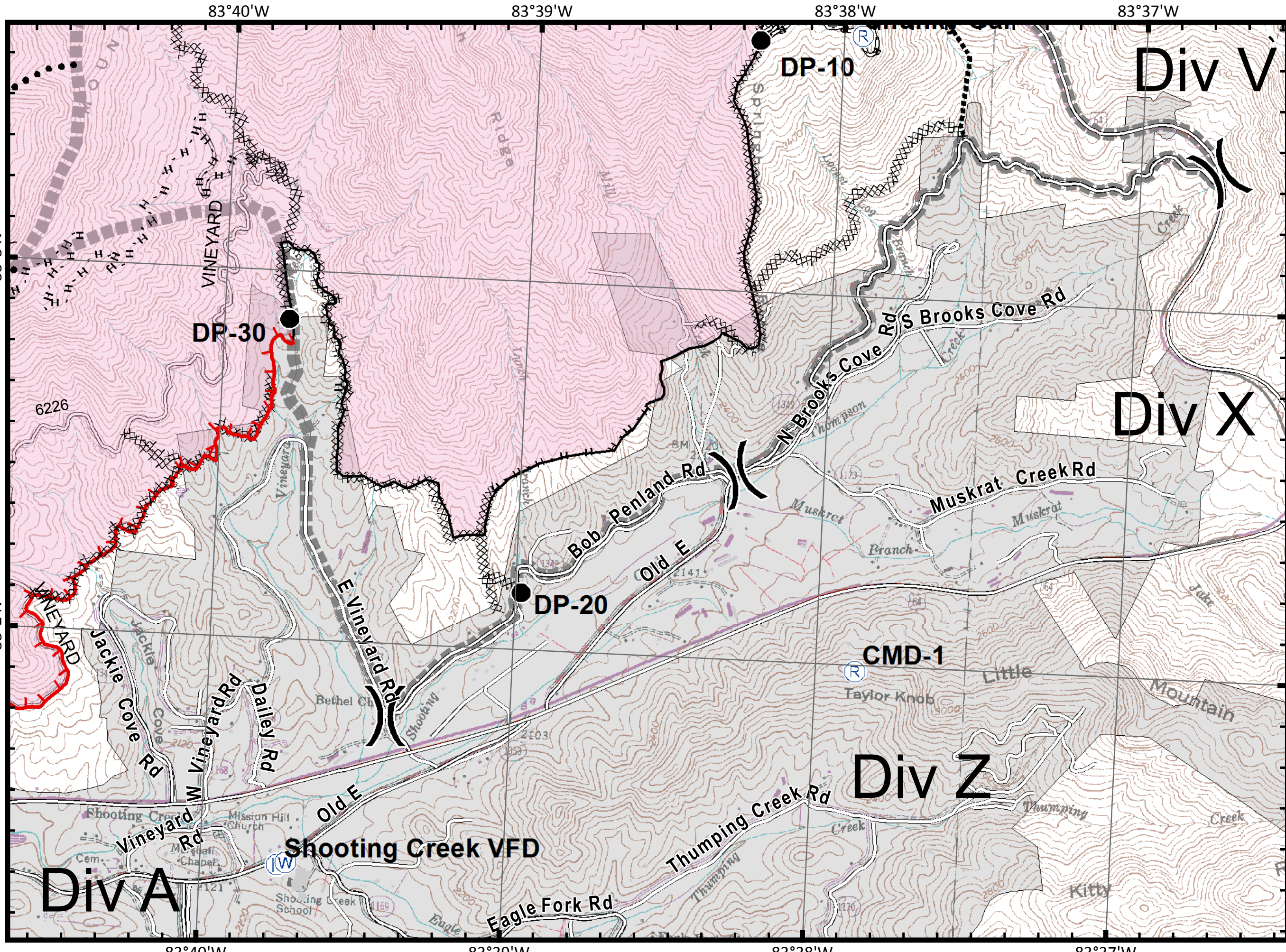
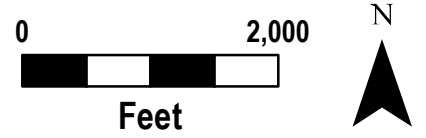
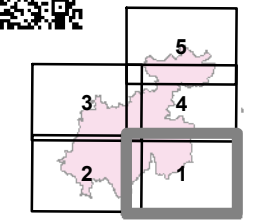
IAP Tile Div X/Z

11/17/2016
Day Shift

-  Mobile Weather Unit
-  MediVac Site
-  Drop Point
-  Fire Origin
-  Helispot
-  Repeater
-  Water Source
-  Fire Station



-  Structures
-  Uncontrolled Fire Edge
-  Completed Dozer Line
-  Completed Line
-  Hand Line
-  Road as Completed Line
-  Planned Secondary Line
-  Proposed Dozer Line
-  Roads_BotelerArea selection
-  Nantahala National Forest POI
-  Bladed Road
-  Power Line
-  Trail
-  Trails
-  Containment Perimeter



Boteler Fire

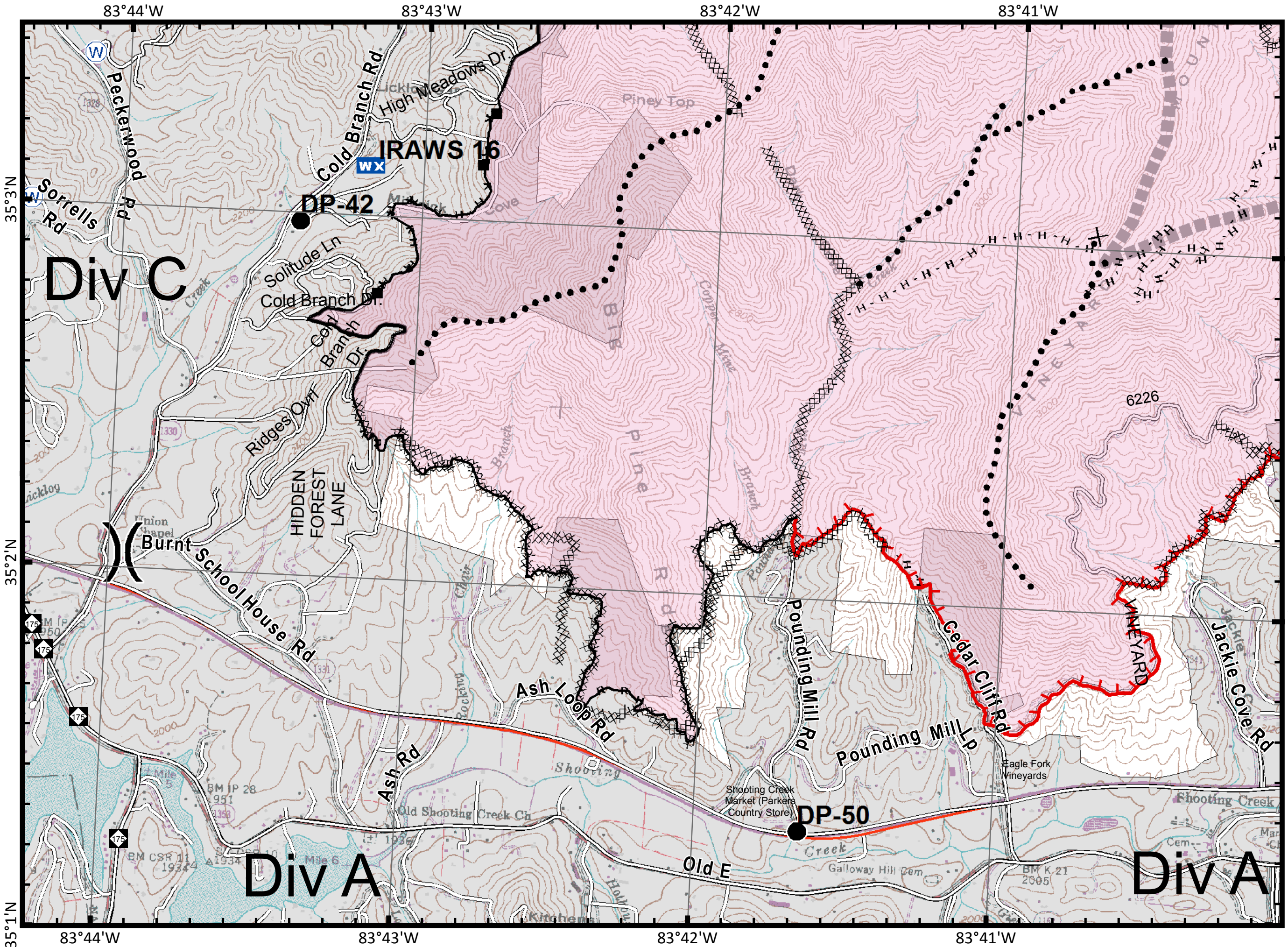
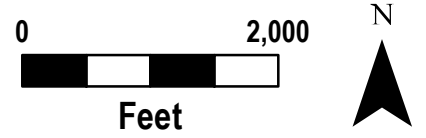
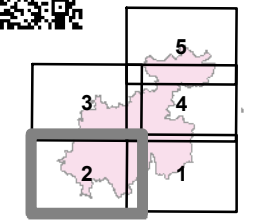
NC-NCF-160247

IAP Tile Div A/C

11/17/2016
Day Shift

- WX** Mobile Weather Unit
- U** MediVac Site
- Drop Point
- ⊗** Fire Origin
- Helispot
- Ⓡ** Repeater
- Ⓜ** Water Source
- ⓕ** Fire Station

- ()** Division
- Structures
- Uncontrolled Fire Edge
- ⊗** Completed Dozer Line
- Completed Line
- H** Hand Line
- R** Road as Completed Line
- Planned Secondary Line
- ⊗** Proposed Dozer Line
- Roads_BotelerArea selection
- NantahalaNationalForest_POI
- Bladed Road
- Power Line
- Trail
- Containment Perimeter



IAP_8x11_land_2016_Boteler_NONCF160247

Boteler Fire

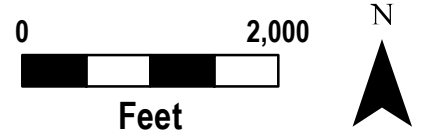
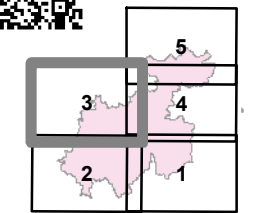
NC-NCF-160247

IAP Tile Div C/E

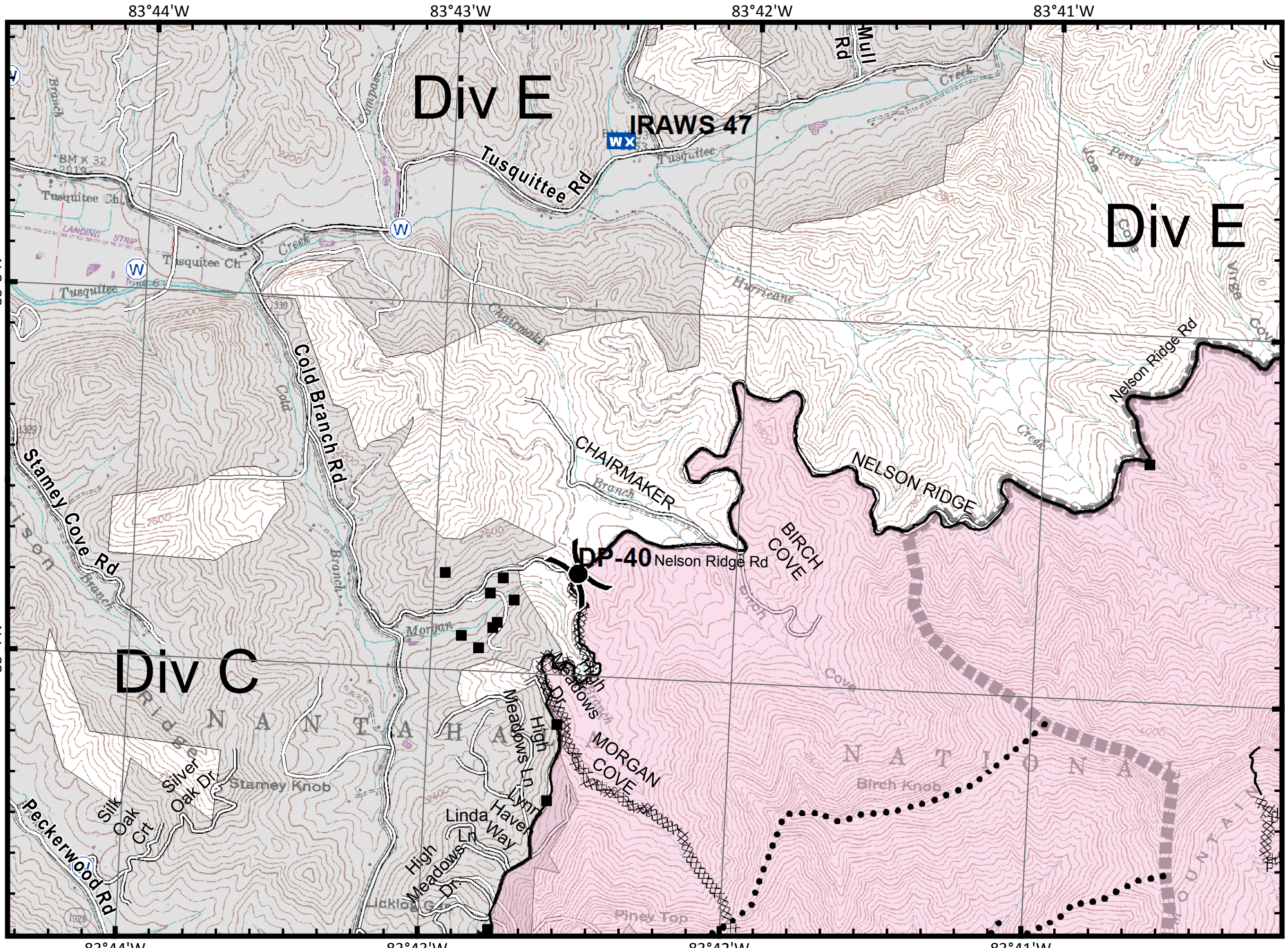
11/17/2016
Day Shift

- WX** Mobile Weather Unit
- U** MediVac Site
- Drop Point
- ⊗** Fire Origin
- Helispot
- Ⓡ** Repeater
- Ⓜ** Water Source
- ⓕ** Fire Station

- ()** Division
- Structures
- ┌** Uncontrolled Fire Edge
- ⊗** Completed Dozer Line
- Completed Line
- H** Hand Line
- R** Road as Completed Line
- Planned Secondary Line
- ⊗** Proposed Dozer Line
- Roads_BotelerArea selection
- NantahalaNationalForest_POI
- Bladed Road
- Power Line
- Trail
- Trails
- Containment Perimeter



11/17/2016 8:58:45 PM
NC StatePlane NAD83 Feet
C. Roberts, GISS



IAP_8x11_land_2016_Boteler_NONCF160247

Boteler Fire

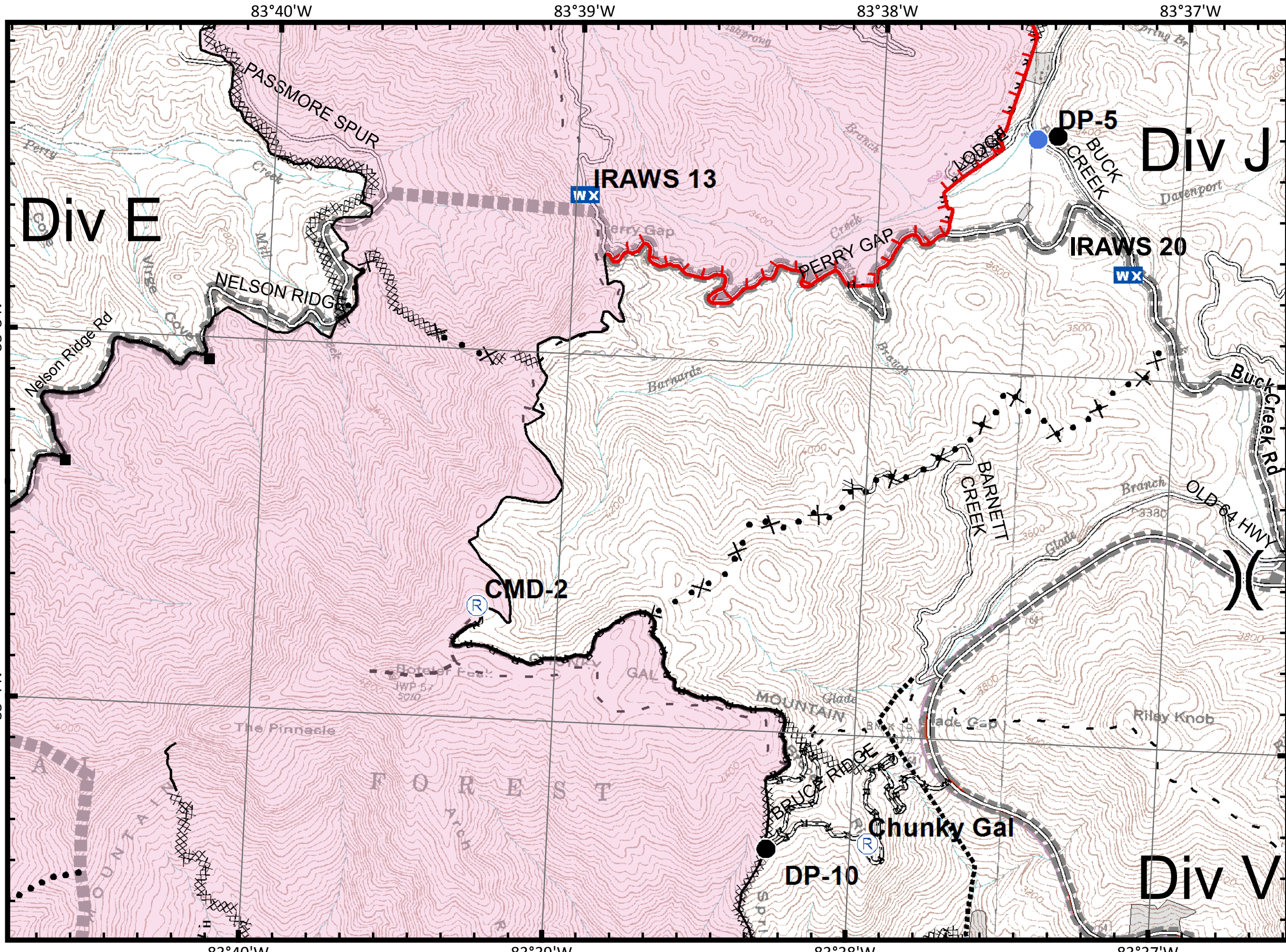
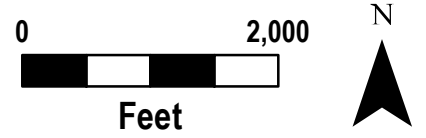
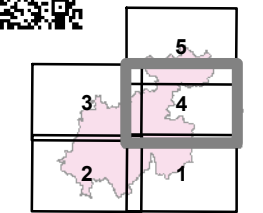
NC-NCF-160247

IAP Tile Div J/V

11/17/2016
Day Shift

- WX Mobile Weather Unit
- MediVac Site
- Drop Point
- X Fire Origin
- Helispot
- R Repeater
- W Water Source
- F Fire Station

-) Division
- Structures
- Uncontrolled Fire Edge
- Completed Dozer Line
- Completed Line
- H Hand Line
- R Road as Completed Line
- Planned Secondary Line
- X Proposed Dozer Line
- Roads_BotelerArea selection
- NantahalaNationalForest_POI
- Bladed Road
- Power Line
- Trail
- Containment Perimeter



IAP_8x11_land_2016_Boteler_NCNCF160247

Boteler Fire

NC-NCF-160247

IAP Tile Div E/J

11/17/2016
Day Shift

WX Mobile Weather Unit

U MediVac Site

● Drop Point

⊗ Fire Origin

● Helispot

R Repeater

W Water Source

F Fire Station

() Division

■ Structures

└─┘ Uncontrolled Fire Edge

XXXX Completed Dozer Line

— Completed Line

H Hand Line

R Road as Completed Line

● Planned Secondary Line

⊗ Proposed Dozer Line

└─┘ Roads_BotelerArea selection

NantahalaNationalForest_POI

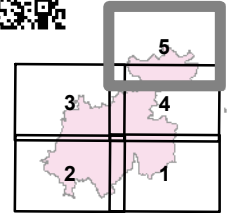
══ Bladed Road

▬▬▬ Power Line

▬▬▬ Trail

▬▬▬ Trails

▬▬▬ Containment Perimeter



Feet

11/17/2016 8:59:20 PM
NC StatePlane NAD83 Feet
C. Roberts, GISS

83°41'W 83°40'W 83°39'W 83°38'W 83°37'W

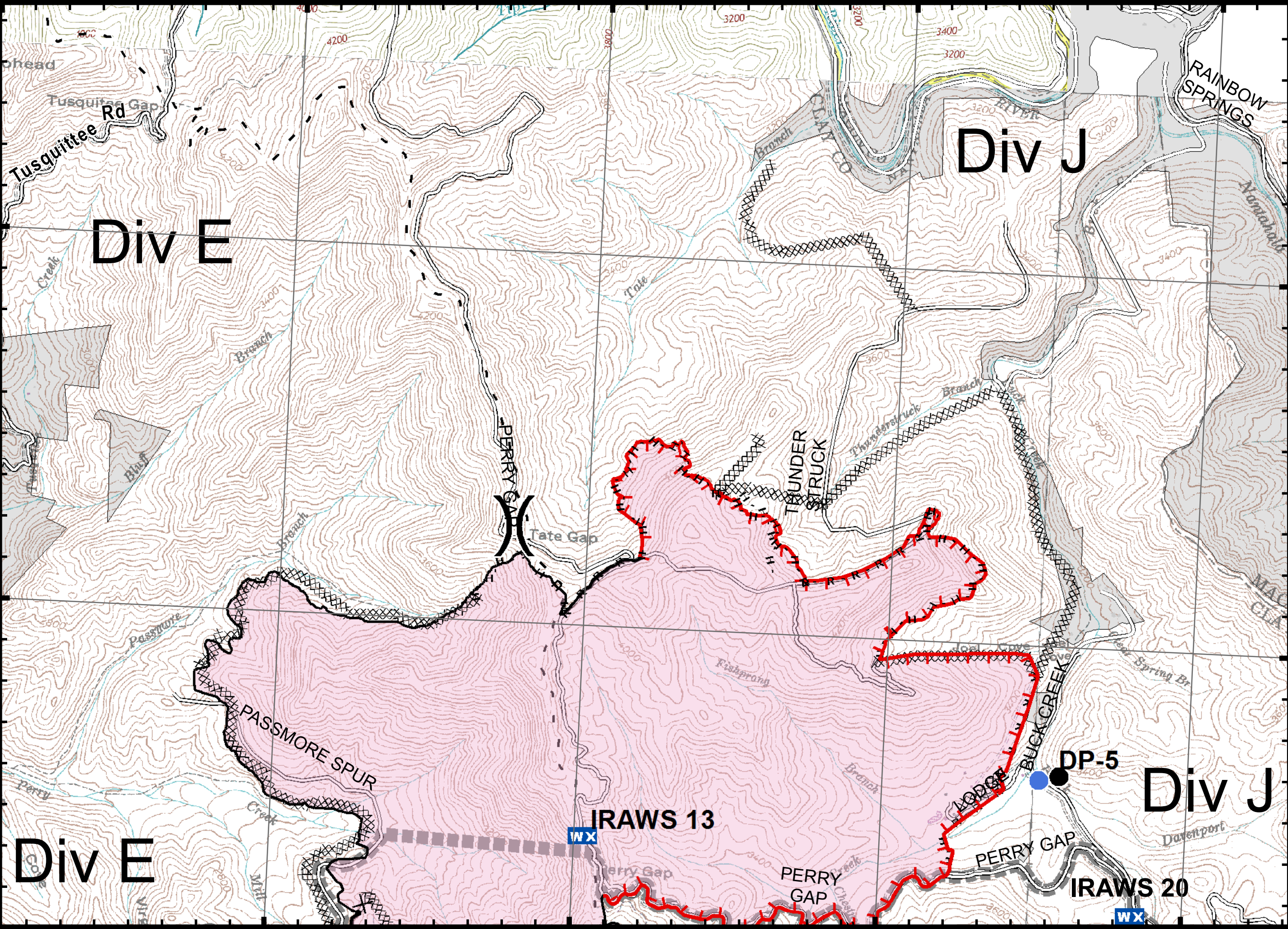
35°7'N

35°7'N

35°6'N

35°6'N

83°40'W 83°39'W 83°38'W 83°37'W



IAP_8x11_land_2016_Boteler_NCNCF160247