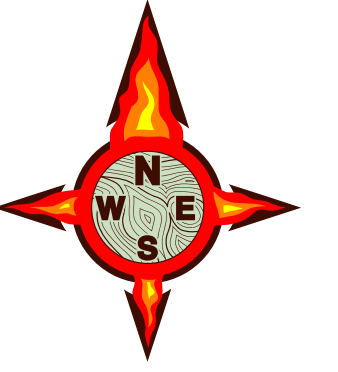




Boteler Fire

11/18/2016 Day Shift

Approximate Infrared Acres as of 11/17/16
Boteler Fire 9,015 ac
Buck Creek 8 ac



INFRARED Briefing Map

NC-NCF-160247

- () Division
- Drop Point
- ⊗ Fire Origin
- Hellsport
- Ⓡ Repeater
- Ⓜ Water Source
- Ⓜ Mobile Weather Unit
- Ⓜ MediVac Site
- Uncontrolled Fire Edge
- Completed Dozer Line
- Completed Line
- - - - Hand Line
- · - · - Road as Completed Line
- · · · · Planned Secondary Line
- × · × · Proposed Dozer Line
- Bladed Road
- Power Line
- - - - Trail
- ▭ Containment Perimeter
- ▭ Structure Footprints

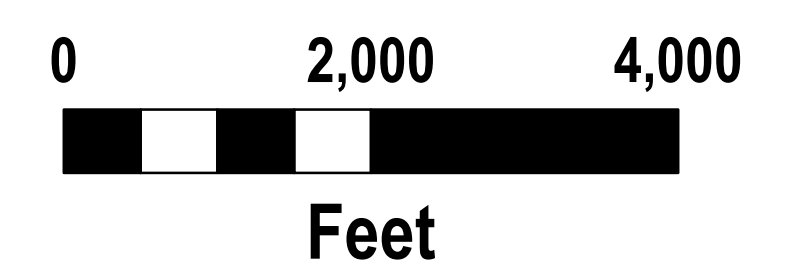
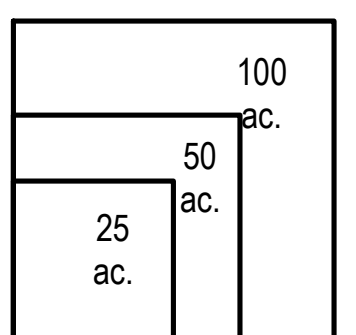
IR flown 2150, 11-17-2016

- 11-17-2016 Isolated Heat Sources
- ⊗ 11-17-2016 Scattered Heat
- ⊗ 11-17-2016 Heat Perimeter

To use a GeoPDF, Install PDF Maps App, by Avenza, available for Apple, Android & Windows Mobile Devices

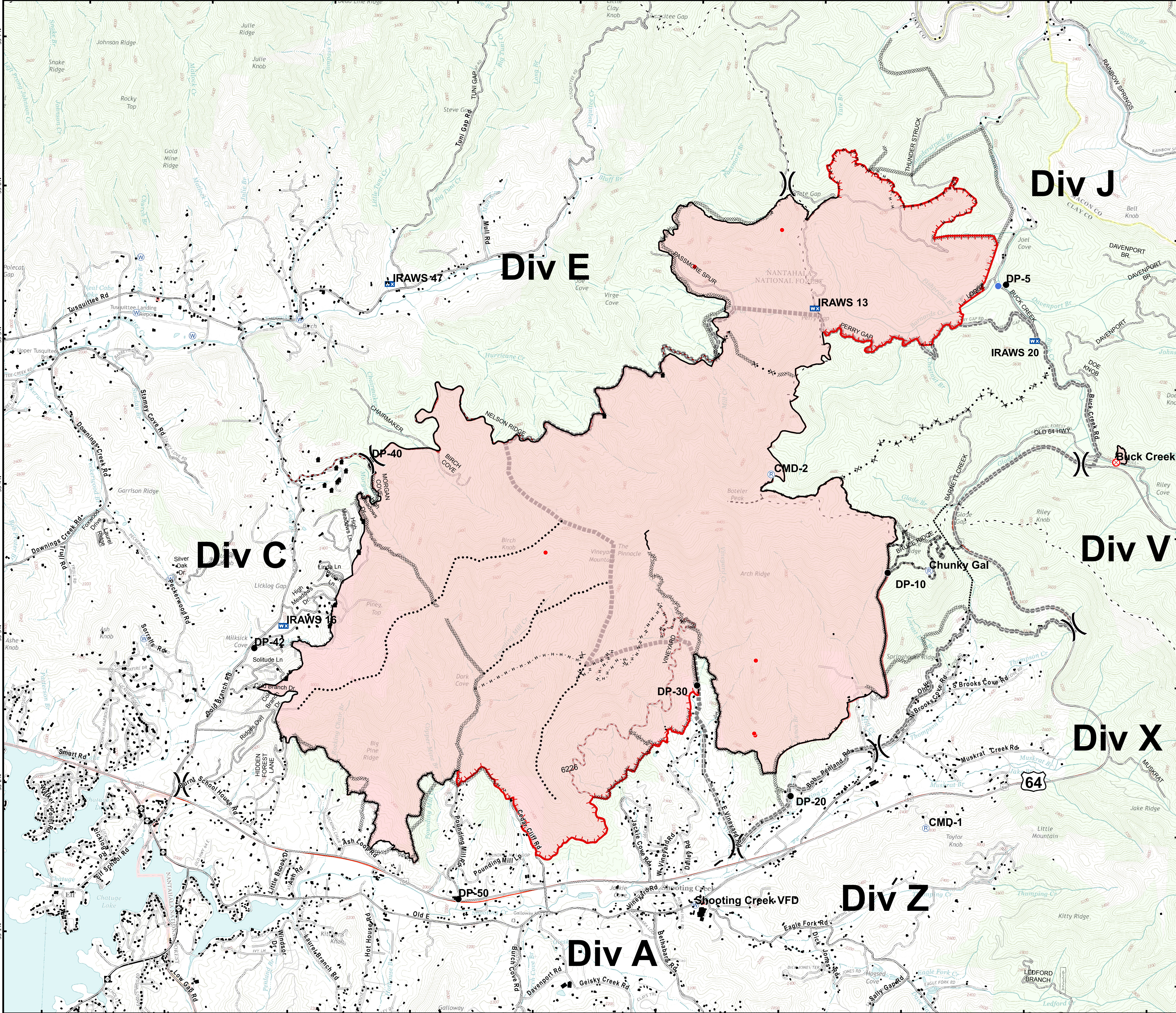


Download a GeoPDF



Information shown is based on the best available data at the time of map production

11/18/2016 6:11:38 AM
NC StatePlane NAD83 Feet
C. Roberts, GIS



briefing_IR_ansi_e_land_2016_Boteler_NCNC160247