



Tellico Fire

Ops Map

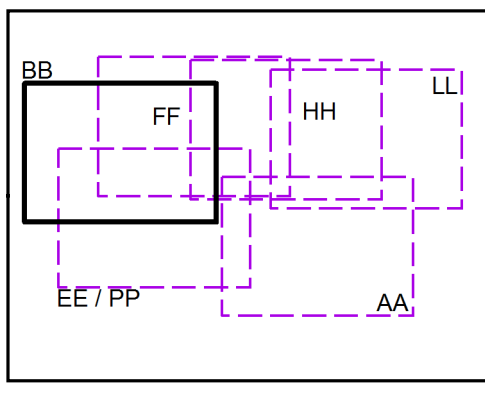
Div BB

11/18/2016
Day Shift

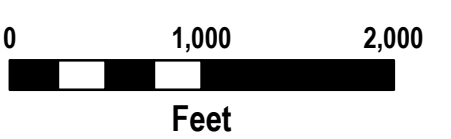
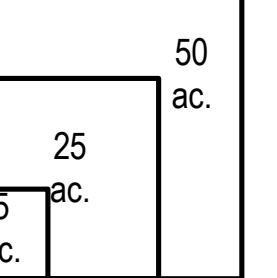


- Branch
- Division
- Uncontrolled Fire Edge
- Completed Dozer Line
- Completed Line
- Hand Line
- Road as Completed Line
- Planned Fire Line
- Proposed Dozer Line
- Drop Point
- Water Source
- Mobile Weather Unit
- Trail
- Trail of Tears
- Structure

Index Map



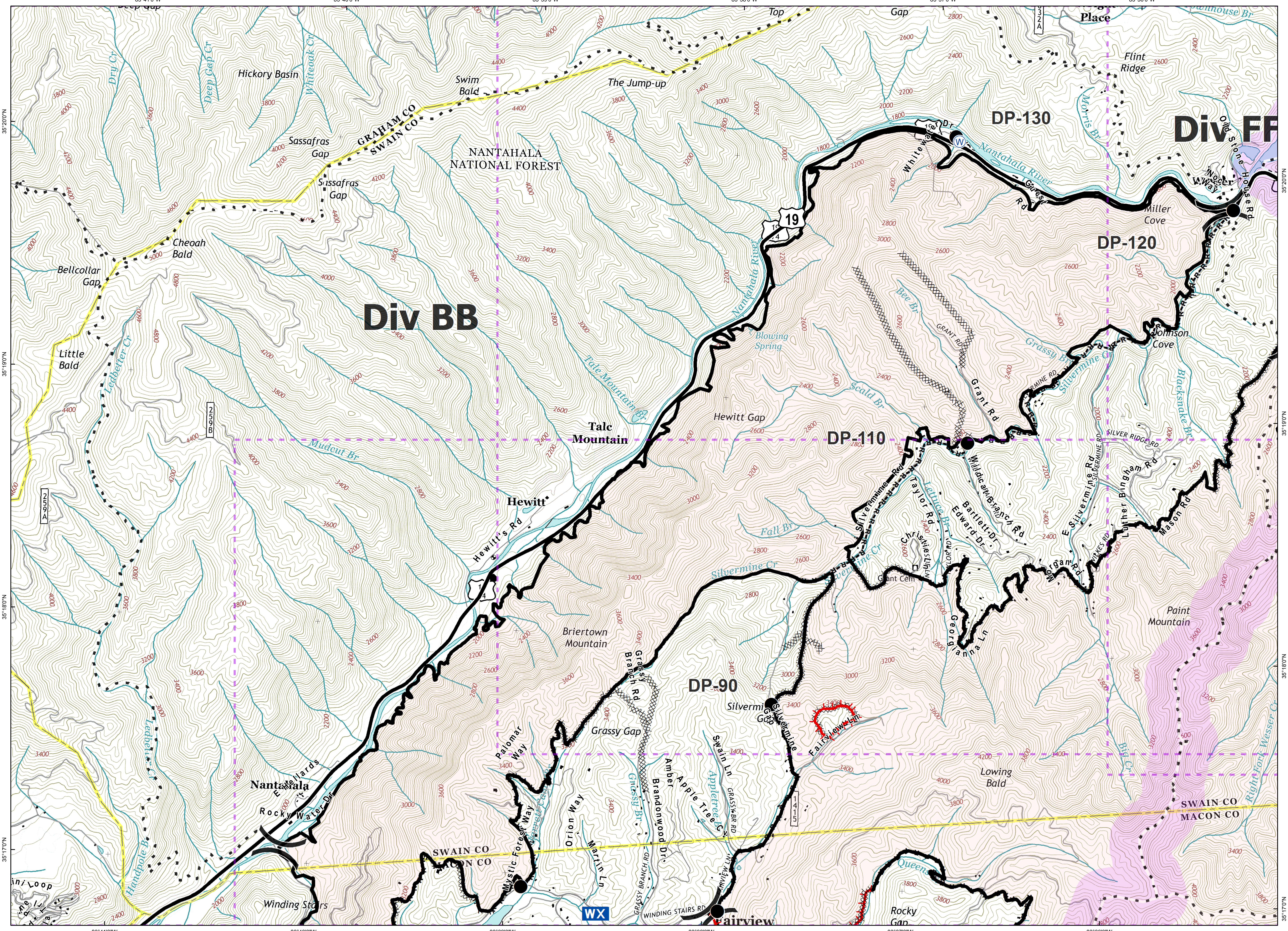
Download a GeoPDF



Information shown is based on the best available data at the time of map production.

Latest Intel: 20161117 @ 1930

20161117 @ 1945
Map Datum: NAD83 Feet
Author: D. Jones, GIS



Document Name: ops_tellico_20161117_1945_ansi_d_land_NCNC160280_1118day