

Boteler Fire

NC-NCF-160247

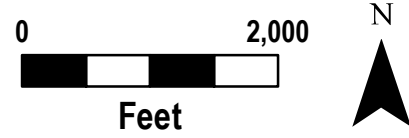
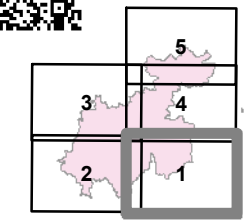
IAP Tile Div X/Z

11/20/2016
Day Shift

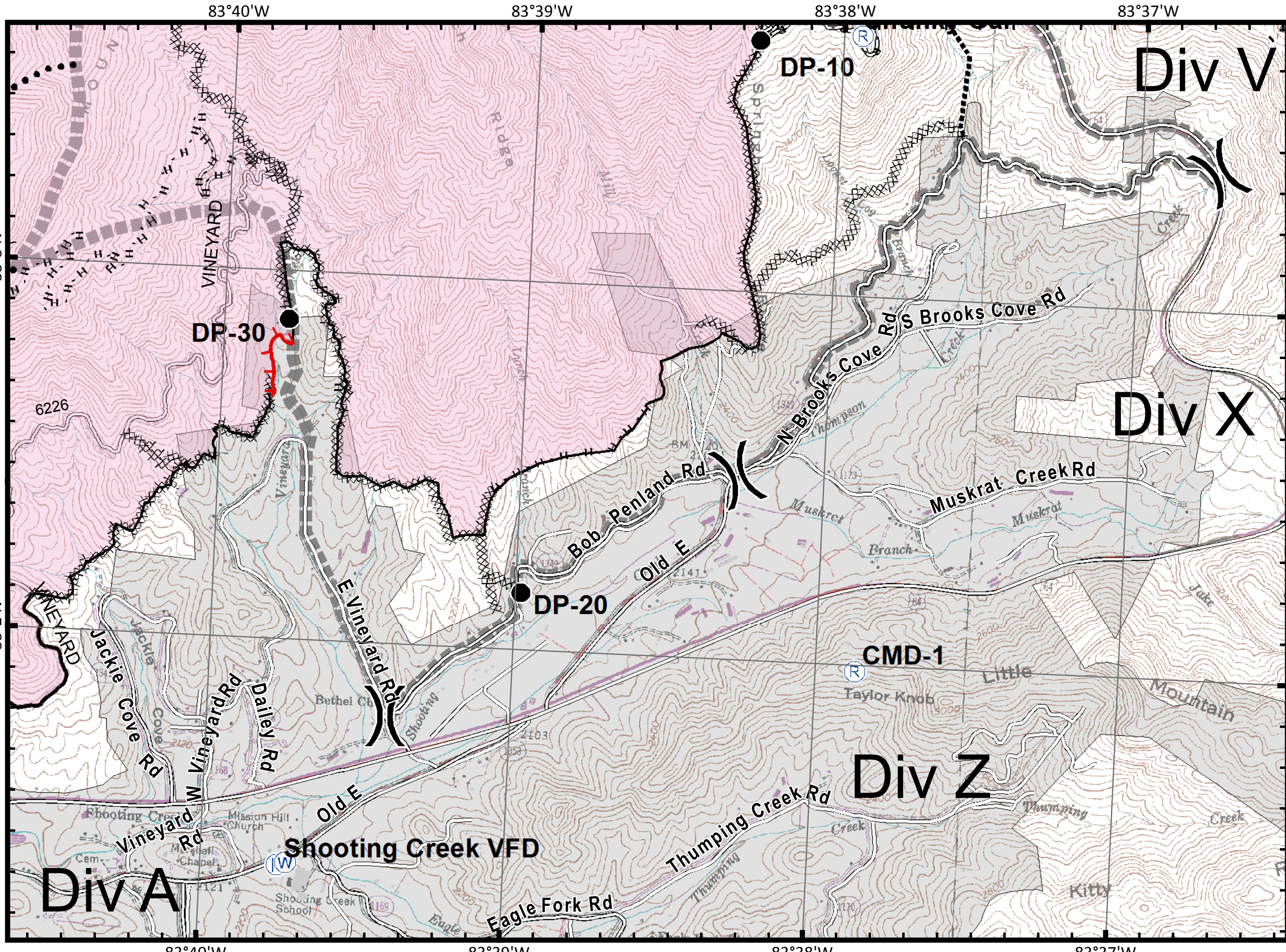
- Mobile Weather Unit
- MediVac Site
- Drop Point
- Fire Origin
- Helispot
- Repeater
- Water Source
- Fire Station

Division

- Structures
- Uncontrolled Fire Edge
- Completed Dozer Line
- Completed Line
- Hand Line
- Road as Completed Line
- Planned Secondary Line
- Proposed Dozer Line
- Roads_BotelerArea selection
- Nantahala National Forest POI
- Bladed Road
- Power Line
- Trail
- Trails
- Containment Perimeter



11/19/2016 9:31:30 PM
NC StatePlane NAD83 Feet
C. Roberts, GISS



IAP_8x11_land_2016_Boteler_NONCF160247

Boteler Fire

NC-NCF-160247

IAP Tile Div A/C

11/20/2016
Day Shift

WX Mobile Weather Unit

U MediVac Site

● Drop Point

⊗ Fire Origin

● Helispot

Ⓡ Repeater

Ⓢ Water Source

F Fire Station

() Division

■ Structures

└─┘ Uncontrolled Fire Edge

⊗⊗⊗ Completed Dozer Line

— Completed Line

H - Hand Line

R - Road as Completed Line

●●● Planned Secondary Line

⊗ Proposed Dozer Line

— Roads_BotelerArea selection

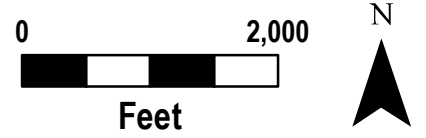
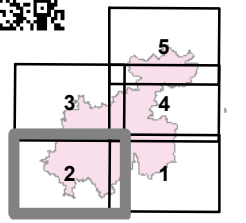
NantahalaNationalForest_POI

▬▬▬ Bladed Road

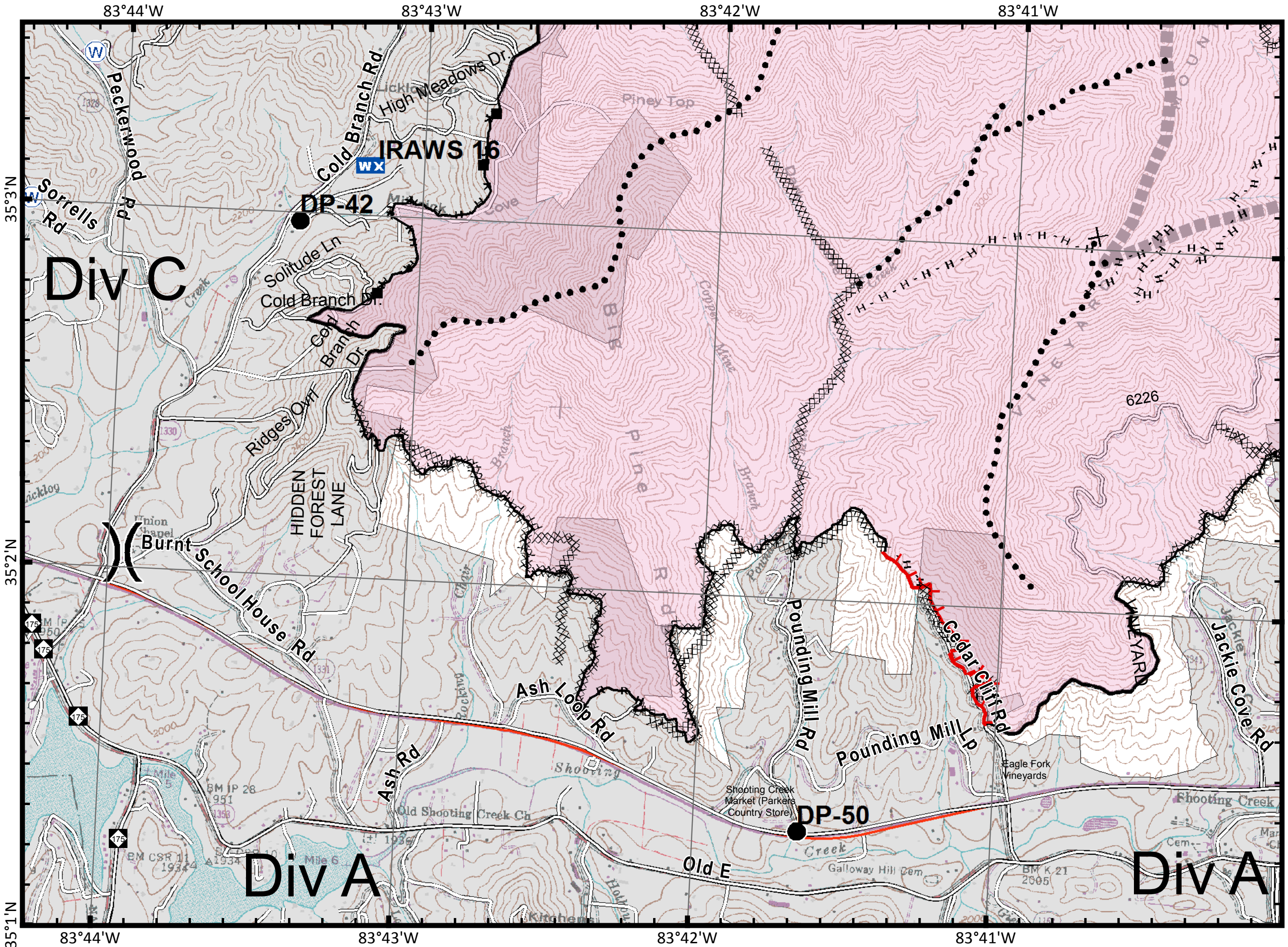
▬▬▬ Power Line

▬▬▬ Trail

▬▬▬ Containment Perimeter



11/19/2016 9:31:49 PM
NC StatePlane NAD83 Feet
C. Roberts, GISS



IAP_8x11_land_2016_Boteler_NONCF160247

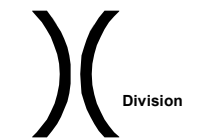
Boteler Fire

NC-NCF-160247

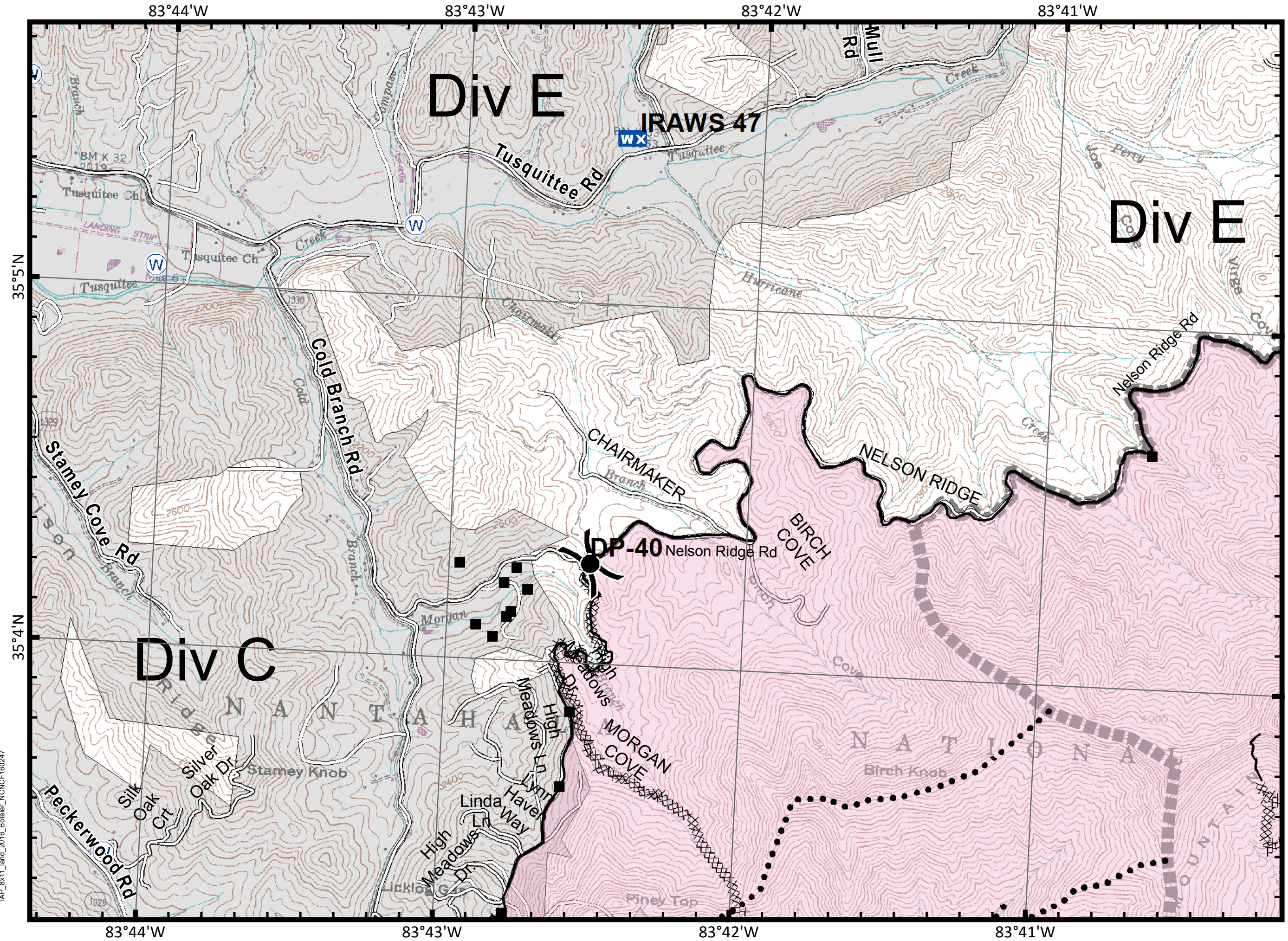
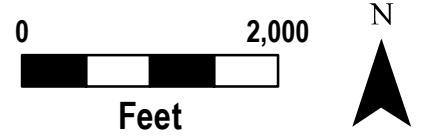
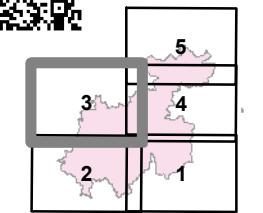
IAP Tile Div C/E

11/20/2016
Day Shift

- WX** Mobile Weather Unit
- U** MediVac Site
- Drop Point
- ⊗** Fire Origin
- Helispot
- Ⓡ** Repeater
- Ⓜ** Water Source
- Ⓡ** Fire Station



- Structures
- ┌** Uncontrolled Fire Edge
- ⊗** Completed Dozer Line
- Completed Line
- H** Hand Line
- R** Road as Completed Line
- Planned Secondary Line
- ⊗** Proposed Dozer Line
- Roads_BotelerArea selection
- NantahalaNationalForest_POI
- Bladed Road
- Power Line
- Trail
- Trails
- Containment Perimeter



Boteler Fire

NC-NCF-160247

IAP Tile Div J/V

11/20/2016
Day Shift

WX Mobile Weather Unit

U MediVac Site

● Drop Point

⊗ Fire Origin

● Helispot

R Repeater

W Water Source

F Fire Station

) (Division

■ Structures

┌ Uncontrolled Fire Edge

⊗ Completed Dozer Line

— Completed Line

H Hand Line

R Road as Completed Line

● Planned Secondary Line

⊗ Proposed Dozer Line

┌ Roads_BotelerArea selection

NantahalaNationalForest_POI

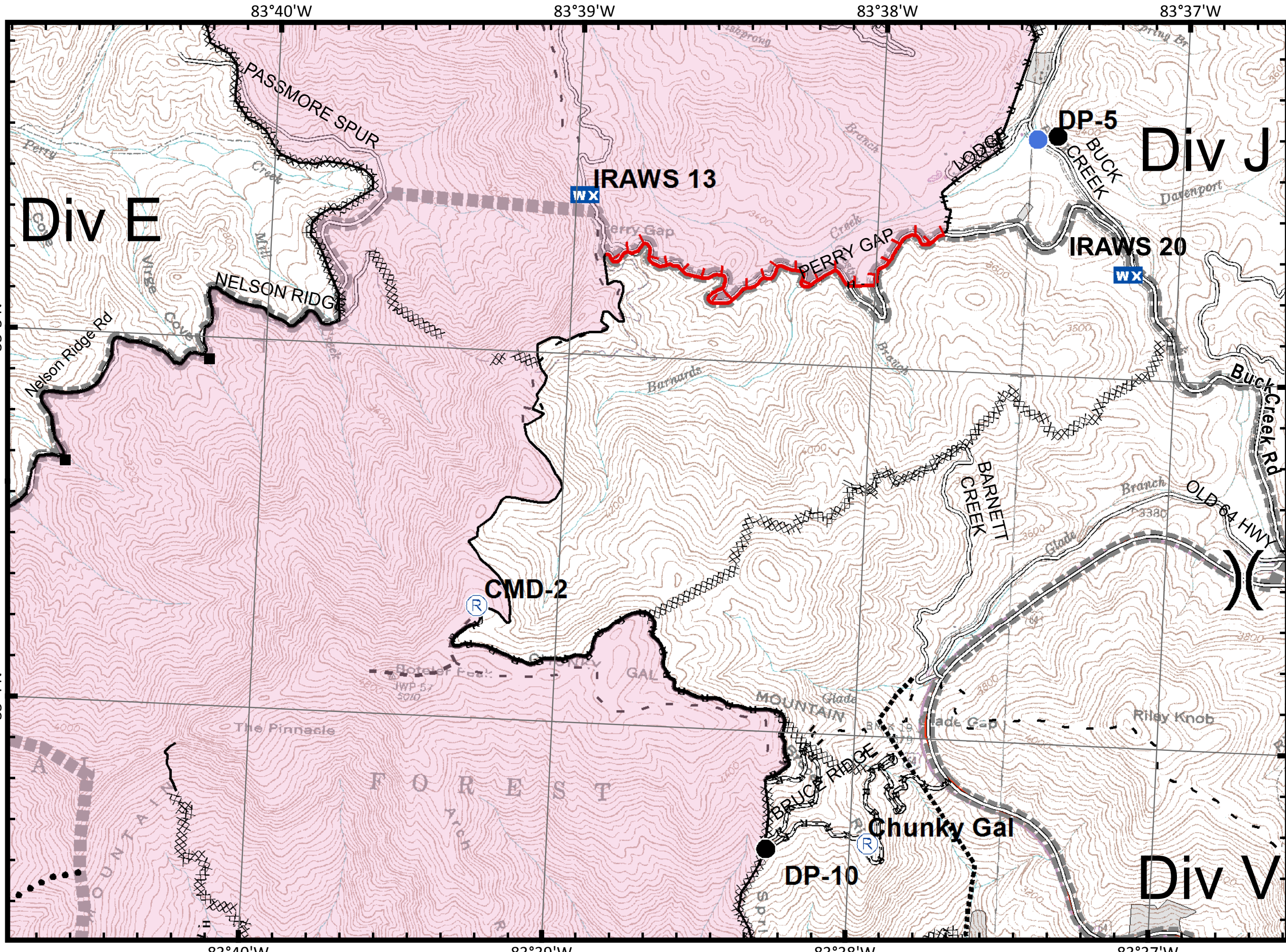
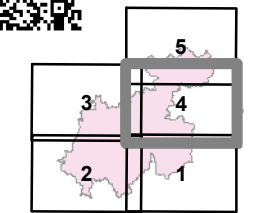
— Bladed Road

▬ Power Line

▬ Trail

▬ Trails

▬ Containment Perimeter



IAP_8x11_land_2016_Boteler_NONCF160247

Boteler Fire

NC-NCF-160247

IAP Tile Div E/J

11/20/2016
Day Shift

WX Mobile Weather Unit

U MediVac Site

● Drop Point

⊗ Fire Origin

● Helispot

R Repeater

W Water Source

F Fire Station

() Division

■ Structures

└─┘ Uncontrolled Fire Edge

XXXX Completed Dozer Line

— Completed Line

H Hand Line

R Road as Completed Line

● Planned Secondary Line

⊗ Proposed Dozer Line

— Roads_BotelerArea selection

NantahalaNationalForest_POI

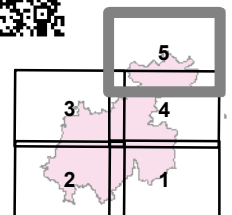
== Bladed Road

▬▬▬ Power Line

— Trail

⋯ Trails

⊕ Containment Perimeter



Feet

11/19/2016 9:32:51 PM
NC StatePlane NAD83 Feet
C. Roberts, GISS

83°41'W 83°40'W 83°39'W 83°38'W 83°37'W

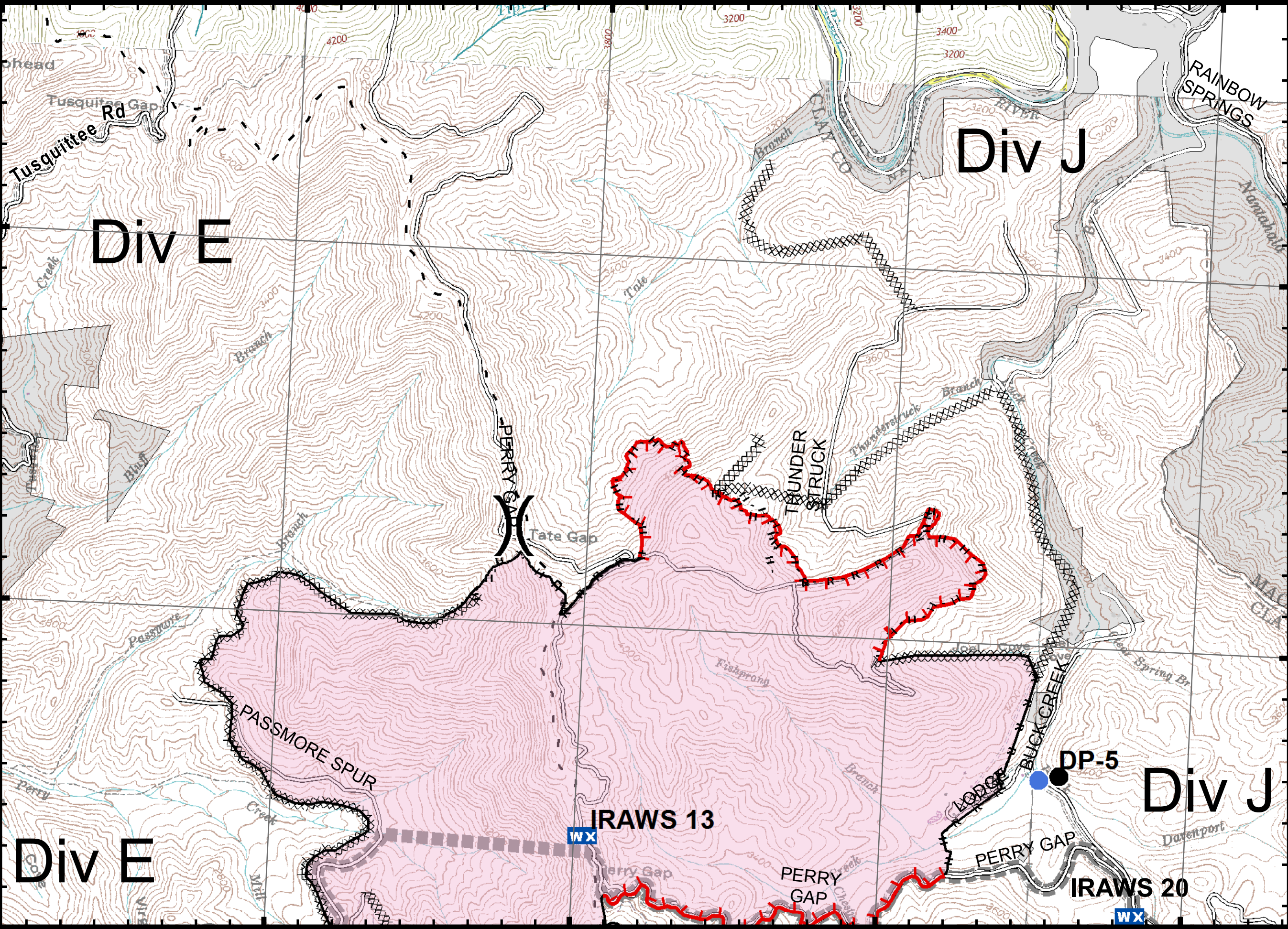
35°7'N

35°7'N

35°6'N

35°6'N

83°40'W 83°39'W 83°38'W 83°37'W



IAP_8x11_land_2016_Boteler_NONCF160247