



Tellico Fire

Ops Map

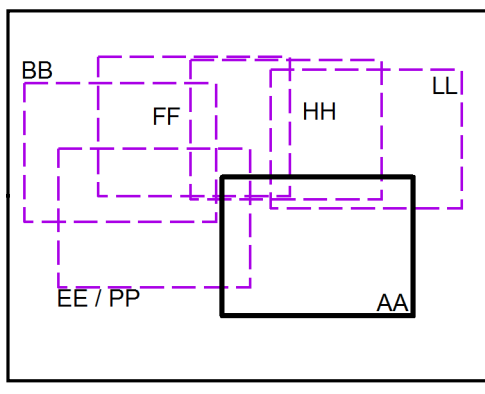
Div AA

11/20/2016
Day Shift

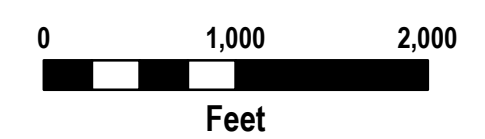
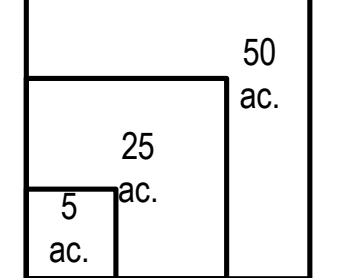


- Branch
 - Division
 - Uncontrolled Fire Edge
 - Completed Dozer Line
 - Completed Line
 - Hand Line
 - Road as Completed Line
 - Drop Point
 - Water Source
 - Mobile Weather Unit
 - Trail
 - Trail of Tears
 - Structure
- 750 foot buffer - total width of 1,500 feet

Index Map



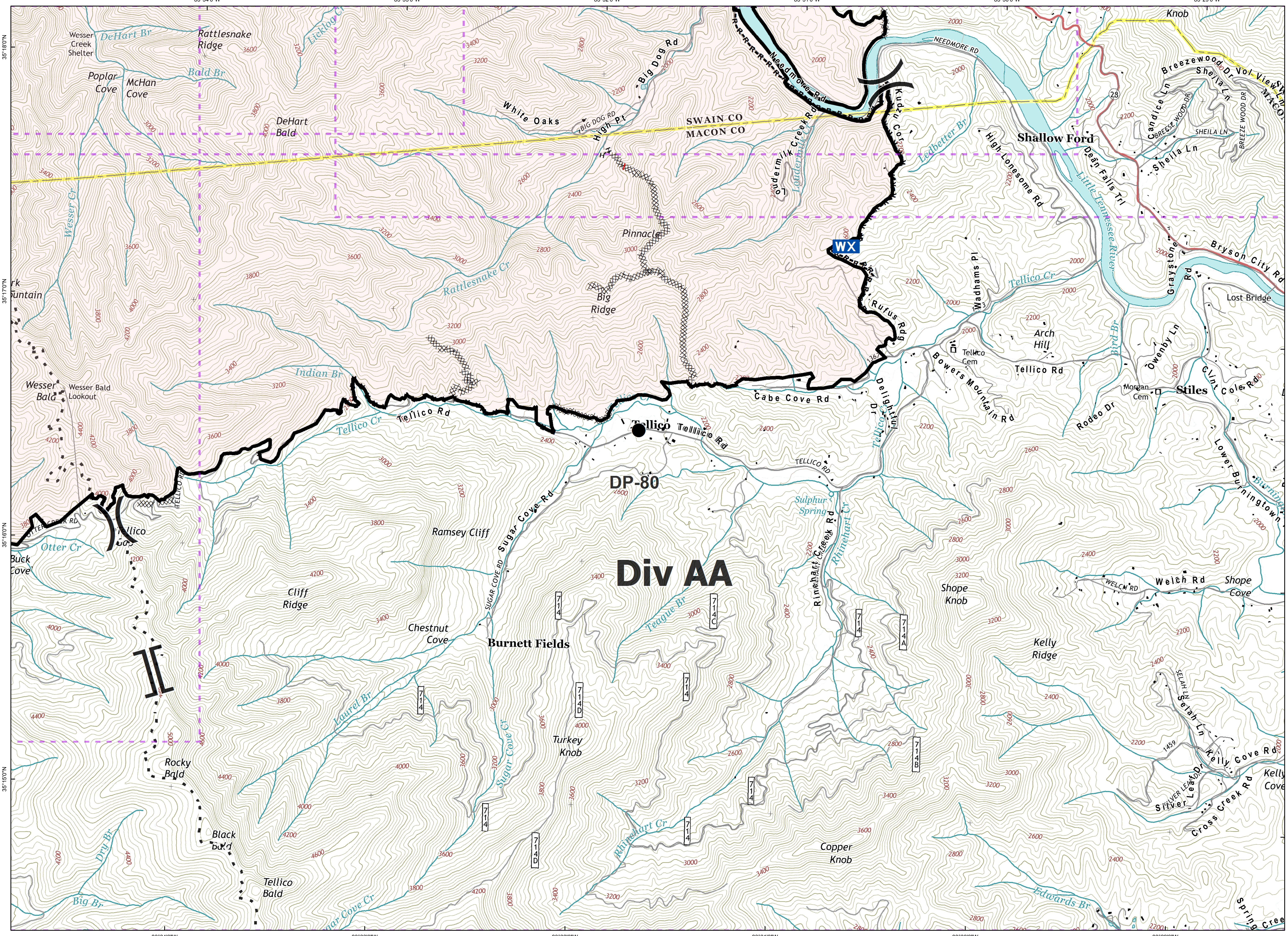
Download a GeoPDF



Information shown is based on the best available data at the time of map production.

Latest Intel: 20161119 @ 1930

20161119 @ 2045
Map Datum: NAD83 Feet
Author: D. Jones, GISS



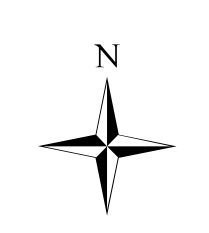


Tellico Fire

Ops Map

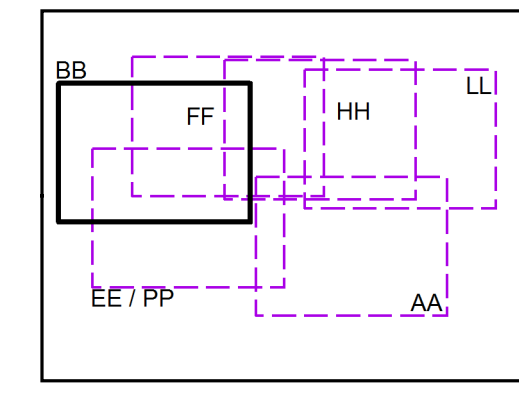
Div BB

11/20/2016
Day Shift

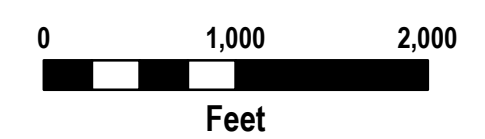
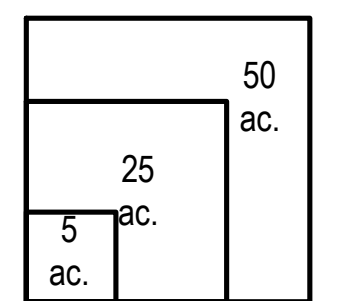


- Branch
- Division
- Uncontrolled Fire Edge
- Completed Dozer Line
- Completed Line
- Hand Line
- Road as Completed Line
- Drop Point
- Water Source
- Mobile Weather Unit
- Trail
- Trail of Tears
- 750 foot buffer - total width of 1,500 feet
- Structure

Index Map



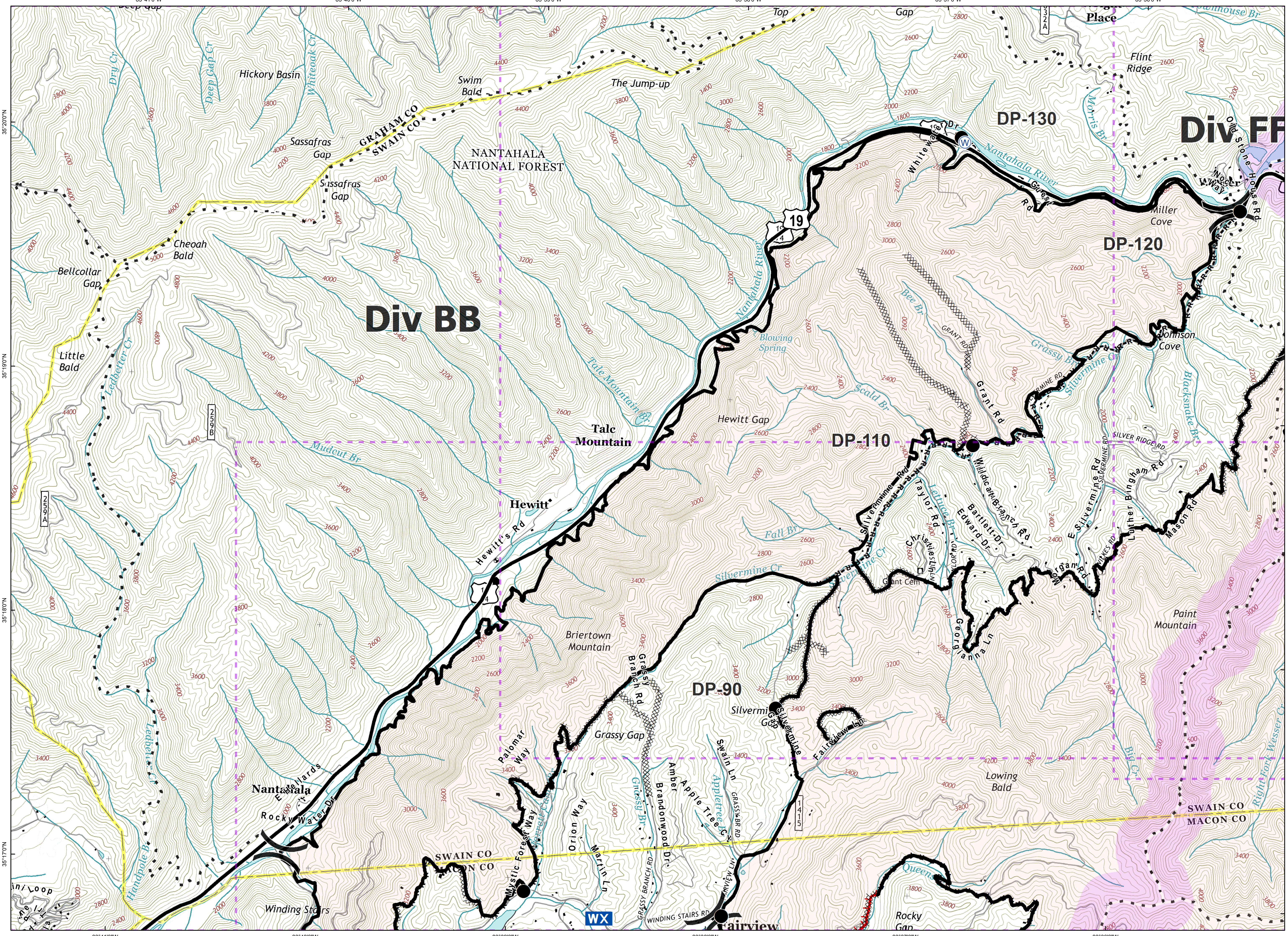
Download a GeoPDF



Information shown is based on the best available data at the time of map production.

Latest Intel: 20161119 @ 1930

20161119 @ 2045
Map Datum: NAD83 Feet
Author: D. Jones, GISS



Document Name: ops_tellico_20161119_2045_ansi_d_land_NCNC160280_1120day

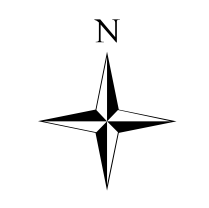


Tellico Fire

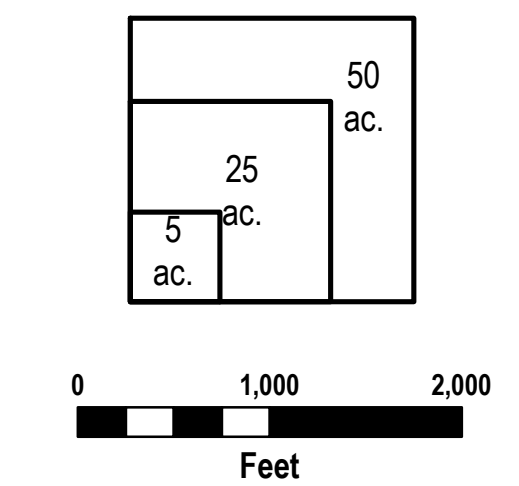
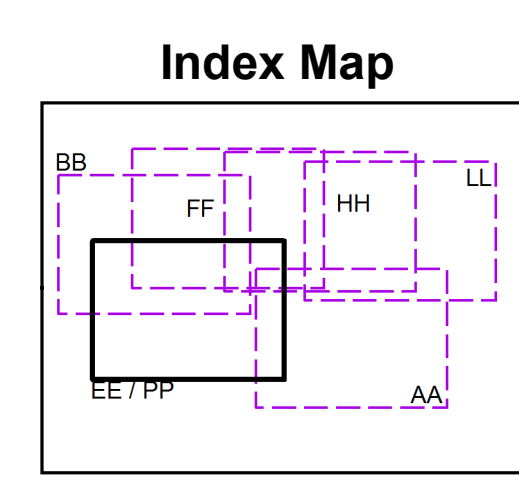
Ops Map

Div EE / Div PP

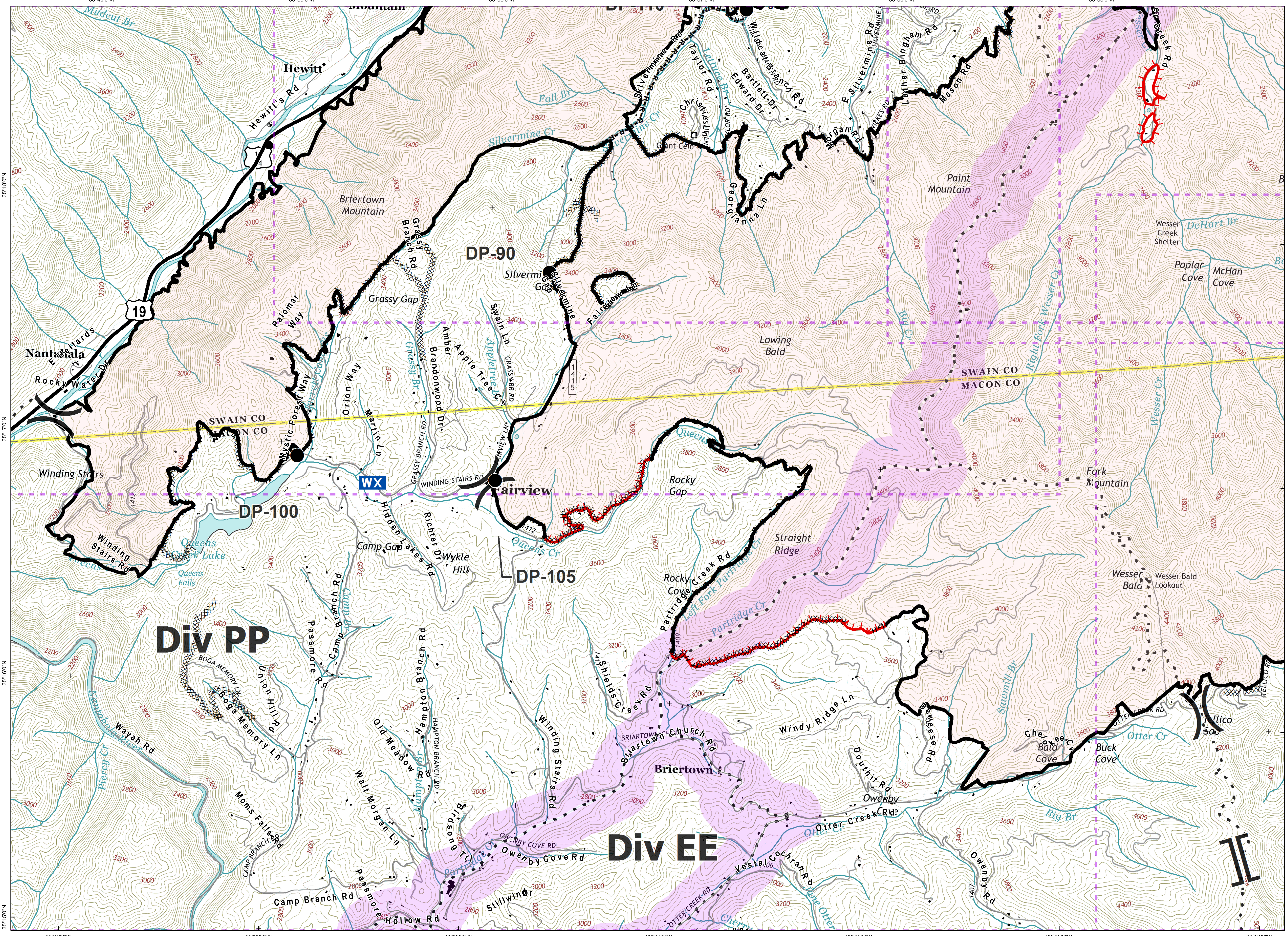
11/20/2016 Day Shift



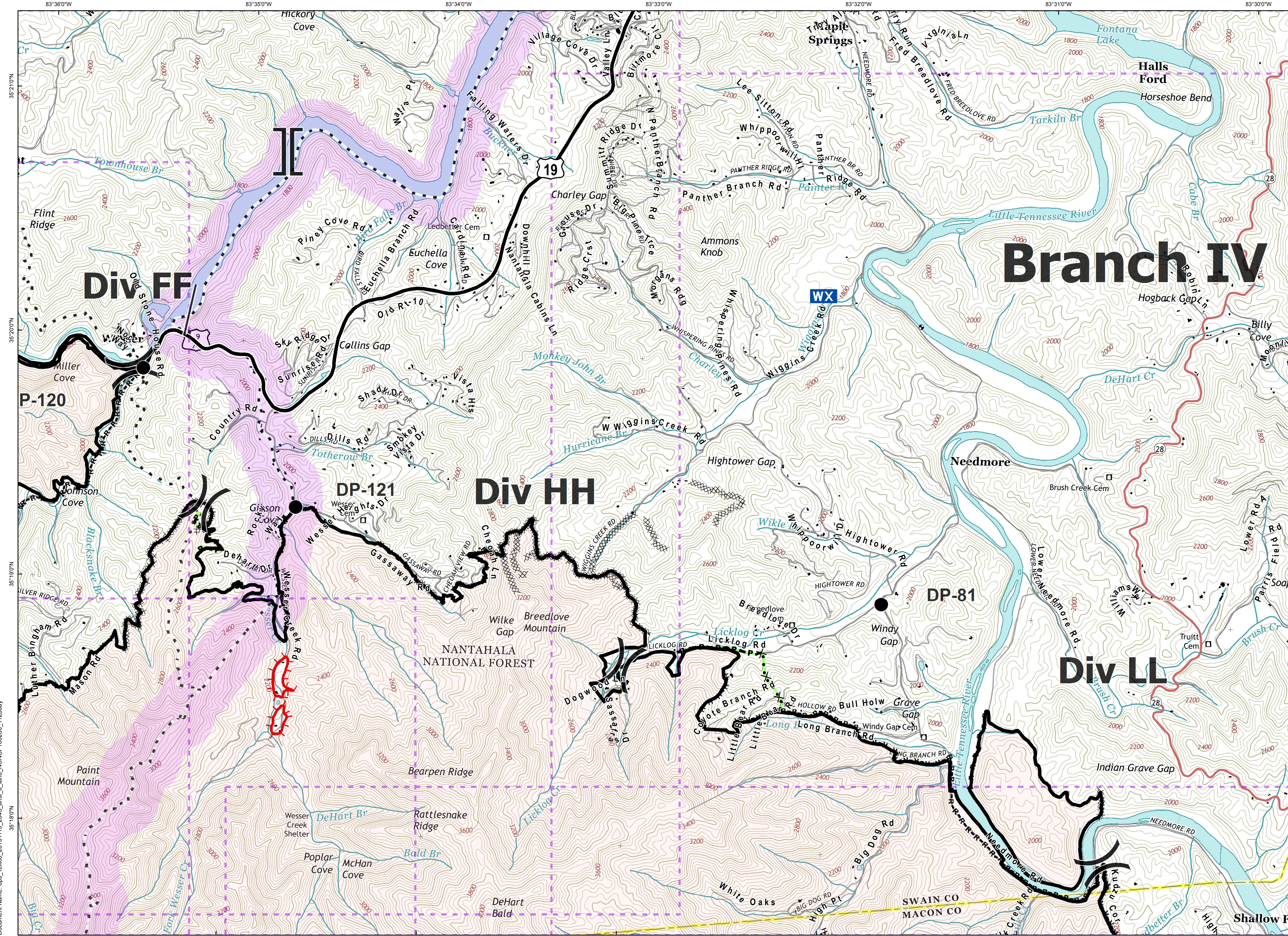
- Branch
- Division
- Uncontrolled Fire Edge
- Completed Dozer Line
- Completed Line
- Hand Line
- Road as Completed Line
- Drop Point
- Water Source
- Mobile Weather Unit
- Trail
- Trail of Tears
- Structure



Information shown is based on the best available data at the time of map production.
 Latest Intel: 20161119 @ 1930



Document Name: ops_tellico_20161119_2045_ansi_d_land_NCNC160280_1120day

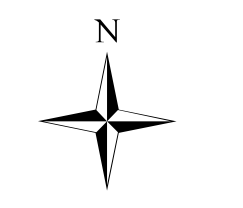


Tellico Fire

Ops Map

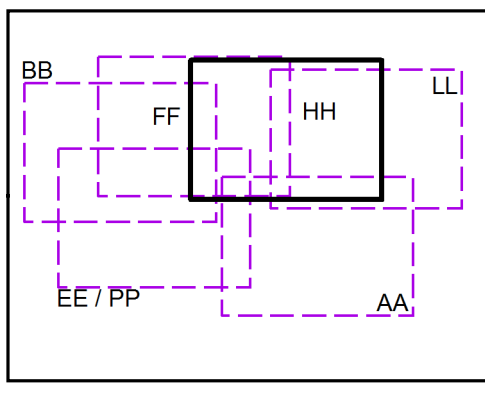
Div HH

11/20/2016
Day Shift

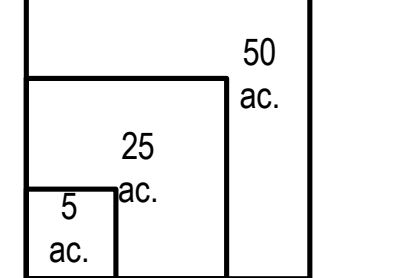


- Branch
 - Division
 - Uncontrolled Fire Edge
 - Completed Dozer Line
 - Completed Line
 - Hand Line
 - Road as Completed Line
 - Drop Point
 - Water Source
 - Mobile Weather Unit
 - Trail
 - Trail of Tears
 - Structure
- 750 foot buffer - total width of 1,500 feet

Index Map



Download a GeoPDF

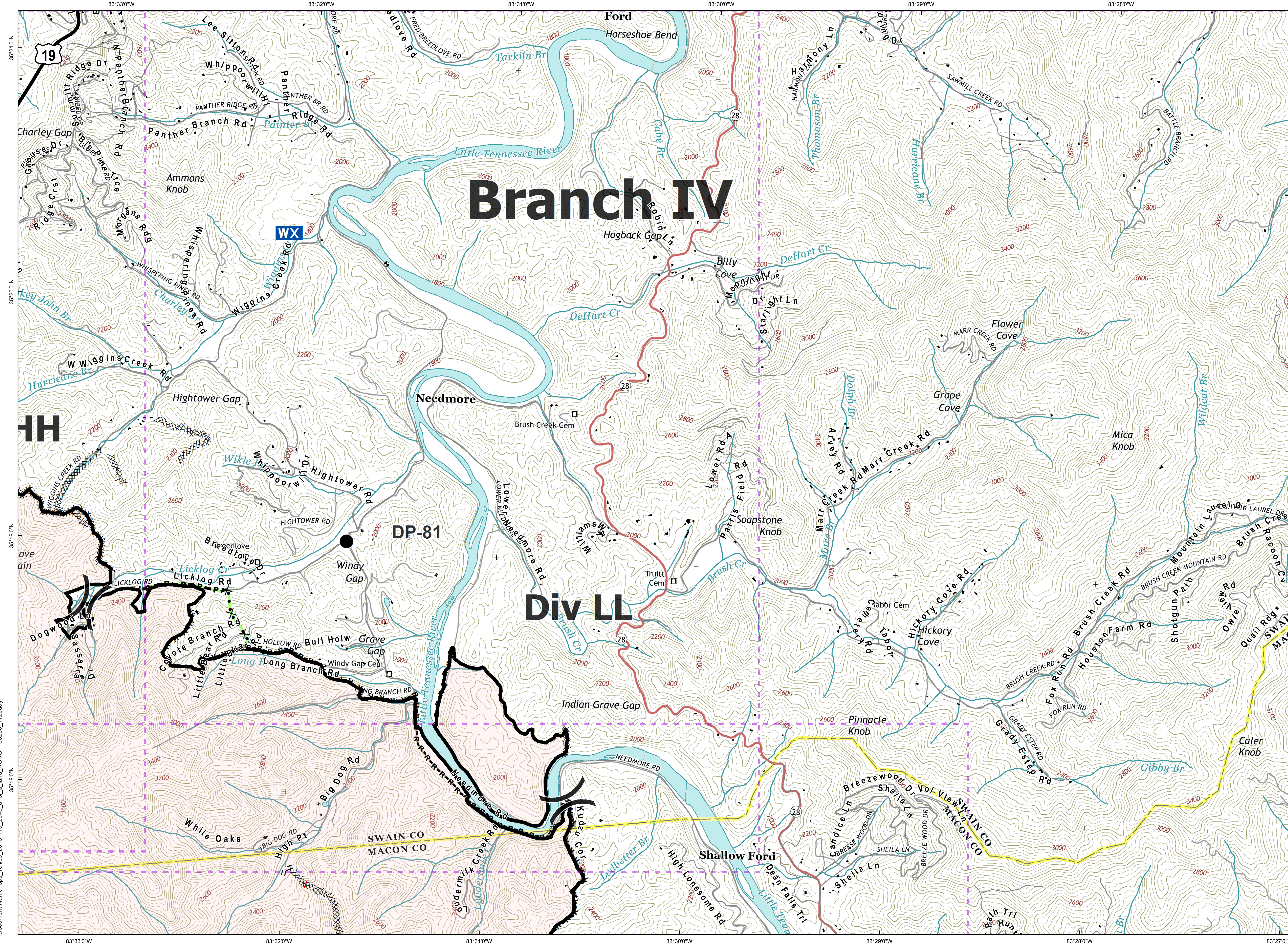


0 1,000 2,000
Feet

Information shown is based on the best available data at the time of map production.

Latest Intel: 20161119 @ 1930

Document Name: ops_tellico_20161119_2045_ansi_d_land_NCNC160280_1120day

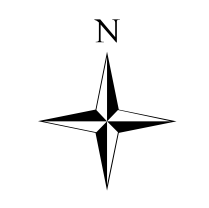


Tellico Fire

Ops Map

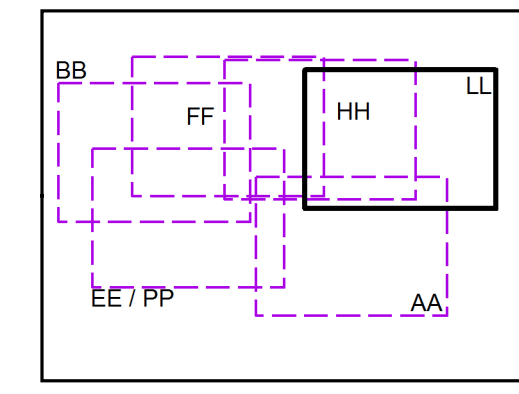
Div LL

11/20/2016
Day Shift

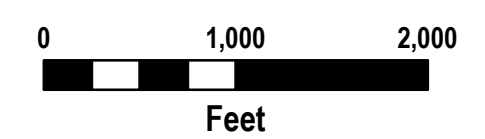
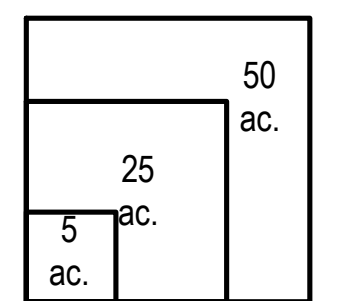


- Branch
 - Division
 - Uncontrolled Fire Edge
 - Completed Dozer Line
 - Completed Line
 - Hand Line
 - Road as Completed Line
 - Drop Point
 - Water Source
 - Mobile Weather Unit
 - Trail
 - Trail of Tears
 - Structure
- 750 foot buffer - total width of 1,500 feet

Index Map



Download a GeoPDF



Information shown is based on the best available data at the time of map production.

Latest Intel: 20161119 @ 1930



Muskrat Fire

Ops Map

11/20/2016
Day Shift

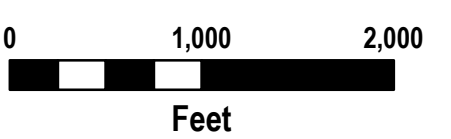
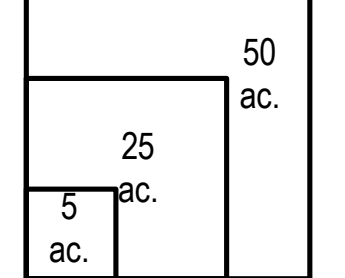


-  Uncontrolled Fire Edge
-  Completed Dozer Line
-  Completed Line
-  Hand Line
-  Road as Completed Line
-  Trail
-  Trail of Tears
-  Structure

750 foot buffer - total width of 1,500 feet



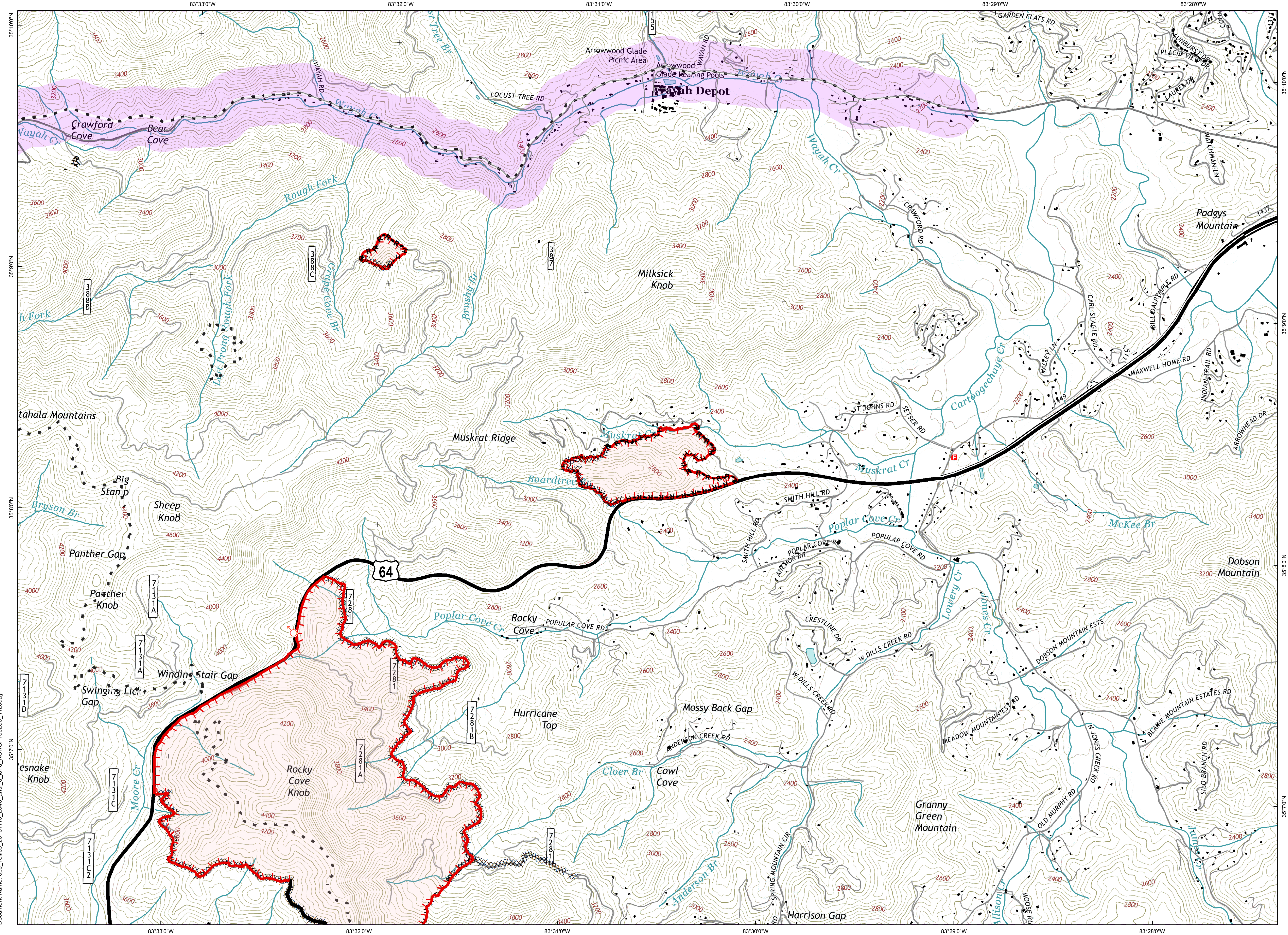
Download a GeoPDF



Information shown is based on the best available data at the time of map production.

Latest Intel: 20161119 @ 1930

20161119 @ 2045
Map Datum: NAD83 Feet
Author: D. Jones, GIS



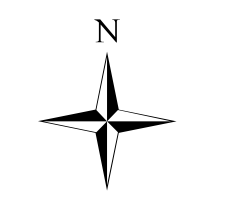
Document Name: ops_tellico_20161119_2045_ansi_d_land_NCNC160280_1120day



Cathy Gap Fire

Ops Map

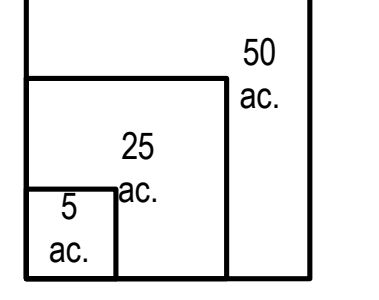
11/20/2016
Day Shift



- Uncontrolled Fire Edge
- Completed Dozer Line
- Completed Line
- Hand Line
- Road as Completed Line



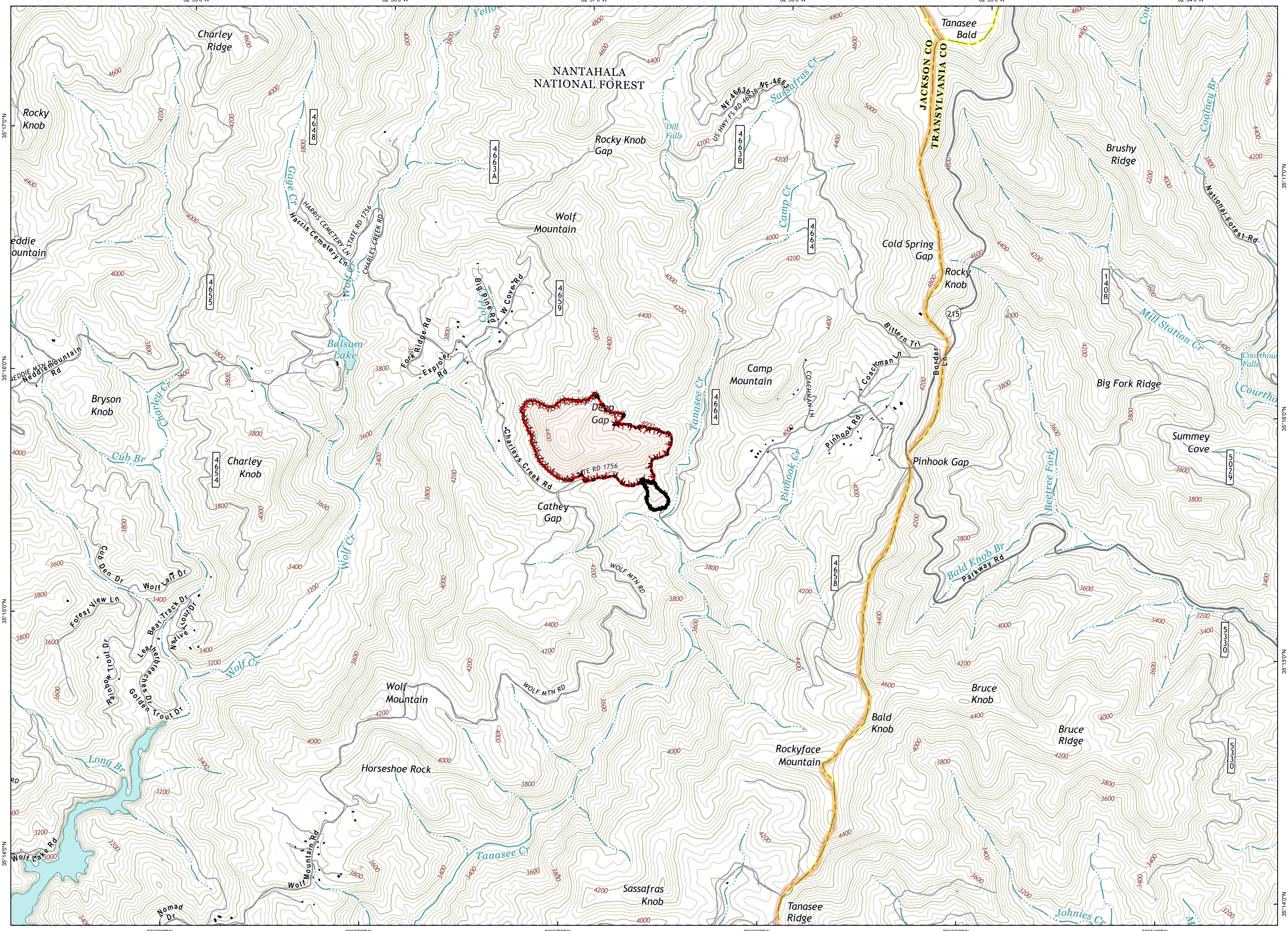
Download a GeoPDF



Information shown is based on the best available data at the time of map production.

Latest Intel: 20161119 @ 1930

20161119 @ 2045
Map Datum: NAD83 Feet
Author: D. Jones, GIS



Document Name: ops_tellico_20161119_2045_ansi_d_land_NCNCNF160280_1120day