

ROCK MOUNTAIN GA-CHF-160079

Air Ops Map 11/21/16

IR Perimeter as of 11/20/16 2145 - 12,779 ac.

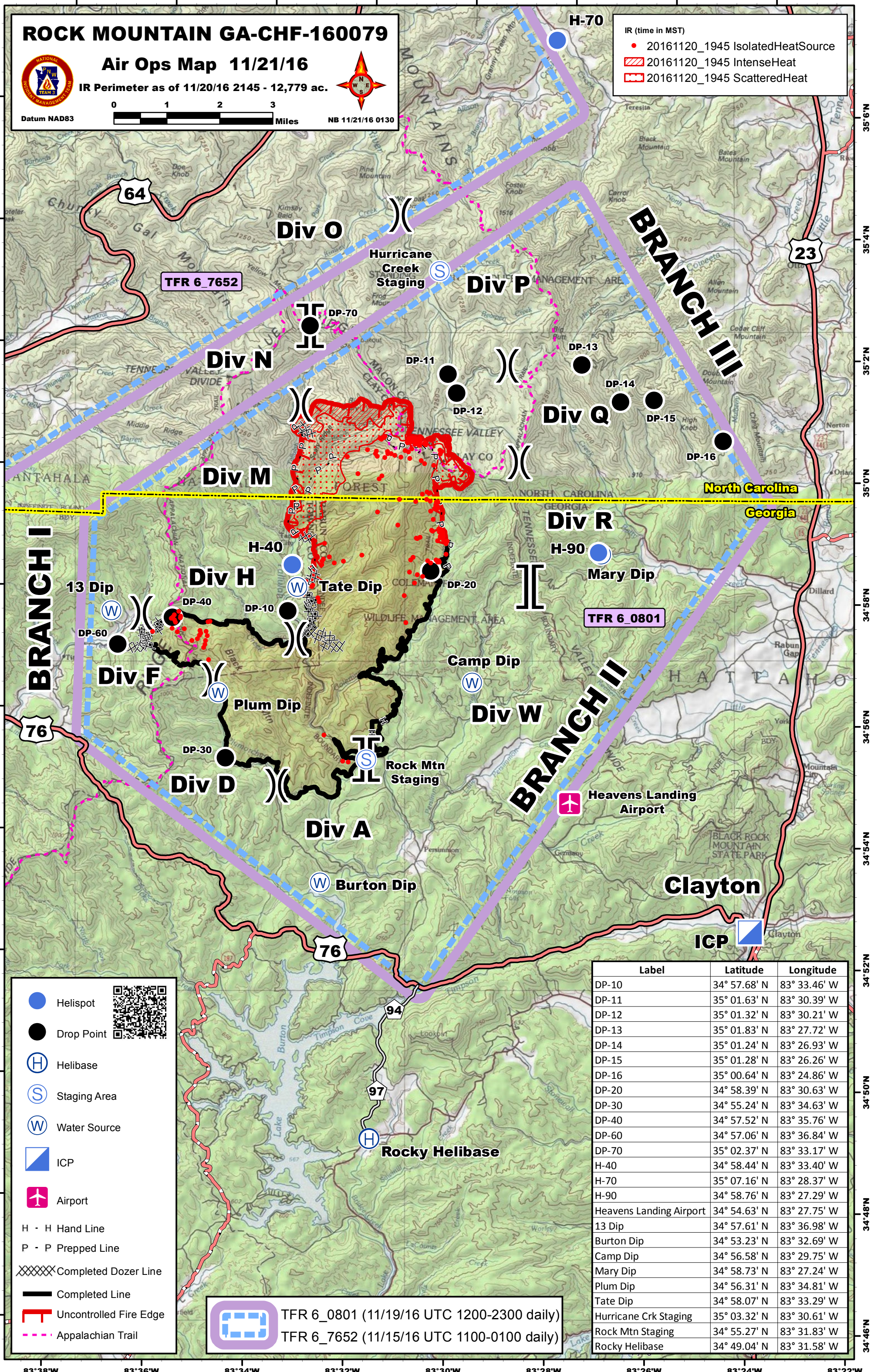


Datum NAD83

NB 11/21/16 0130

IR (time in MST)

- 20161120_1945 IsolatedHeatSource
- ▨ 20161120_1945 IntenseHeat
- ▨ 20161120_1945 ScatteredHeat



- Helispot
- Drop Point
- Helibase
- Staging Area
- Water Source
- ICP
- Airport
- H - H Hand Line
- P - P Prepped Line
- XXXXX Completed Dozer Line
- Completed Line
- ▨ Uncontrolled Fire Edge
- - - Appalachian Trail

- TFR 6_0801 (11/19/16 UTC 1200-2300 daily)
- TFR 6_7652 (11/15/16 UTC 1100-0100 daily)

Label	Latitude	Longitude
DP-10	34° 57.68' N	83° 33.46' W
DP-11	35° 01.63' N	83° 30.39' W
DP-12	35° 01.32' N	83° 30.21' W
DP-13	35° 01.83' N	83° 27.72' W
DP-14	35° 01.24' N	83° 26.93' W
DP-15	35° 01.28' N	83° 26.26' W
DP-16	35° 00.64' N	83° 24.86' W
DP-20	34° 58.39' N	83° 30.63' W
DP-30	34° 55.24' N	83° 34.63' W
DP-40	34° 57.52' N	83° 35.76' W
DP-60	34° 57.06' N	83° 36.84' W
DP-70	35° 02.37' N	83° 33.17' W
H-40	34° 58.44' N	83° 33.40' W
H-70	35° 07.16' N	83° 28.37' W
H-90	34° 58.76' N	83° 27.29' W
Heavens Landing Airport	34° 54.63' N	83° 27.75' W
13 Dip	34° 57.61' N	83° 36.98' W
Burton Dip	34° 53.23' N	83° 32.69' W
Camp Dip	34° 56.58' N	83° 29.75' W
Mary Dip	34° 58.73' N	83° 27.24' W
Plum Dip	34° 56.31' N	83° 34.81' W
Tate Dip	34° 58.07' N	83° 33.29' W
Hurricane Crk Staging	35° 03.32' N	83° 30.61' W
Rock Mtn Staging	34° 55.27' N	83° 31.83' W
Rocky Helibase	34° 49.04' N	83° 31.58' W