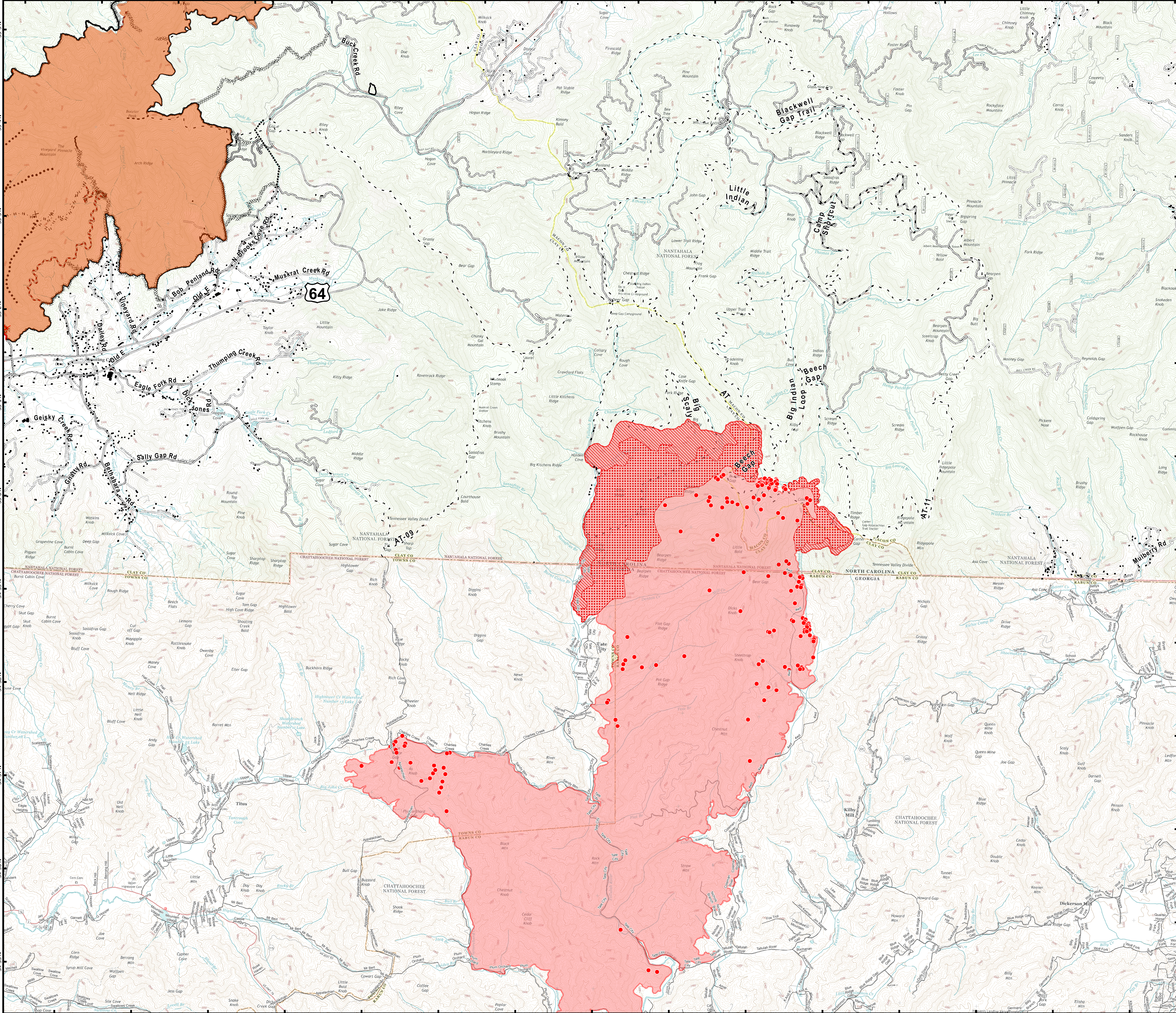




Rock Mt. Fire

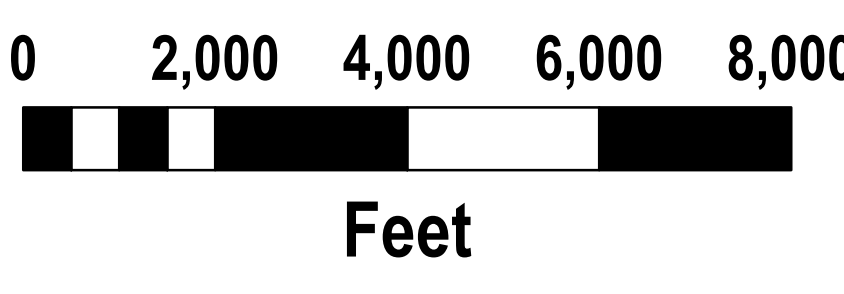
11/21/2016
Day Shift

Acres as of 11/20/16
Rock Mt. Fire 12,779 ac

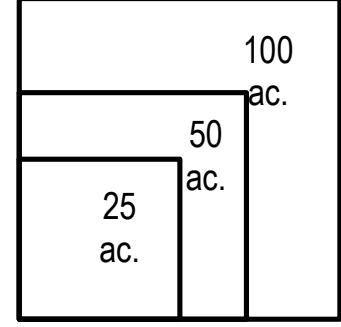
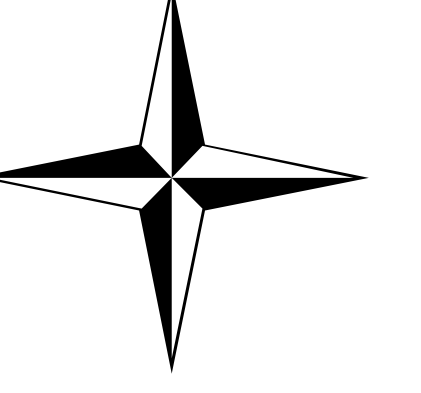


- Uncontrolled Fire Edge
- Completed Dozer Line
- Completed Line
- Hand Line
- Road as Completed Line
- Planned Secondary Line
- Proposed Dozer Line
- Bladed Road
- Power Line
- Trail
- Structure Footprints

- IR flown 1945, 11-20-2016**
- Boteler Fire
 - 11-20-2016 Isolated Heat Sources
 - 11-20-2016 Scattered Heat
 - 11-20-2016 Intense Heat
 - 11-20-2016 Heat Perimeter



Download a GeoPDF



11/21/2016 6:42:26 AM
NC StatePlane NAD83 Feet
C. Roberts, GISS

Rock_Mountain_Briefing_ansi_e_land_2016_NCNC160247