



Boteler Fire

11/21/2016 Day Shift

Approximate Infrared Acres as of 11/20/16
Boteler Fire 9,043 ac
Buck Creek 8 ac



INFRARED Briefing Map

NC-NCF-160247

- () Division
- Drop Point
- ⊗ Fire Origin
- Helispot
- Ⓡ Repeater
- Ⓜ Water Source
- Ⓜwx Mobile Weather Unit
- Ⓜ MedVac Site
- Uncontrolled Fire Edge
- Completed Dozer Line
- Completed Line
- Hand Line
- Road as Completed Line
- Planned Secondary Line
- ⊗ Proposed Dozer Line
- Bladed Road
- Power Line
- Trail
- Structure Footprints

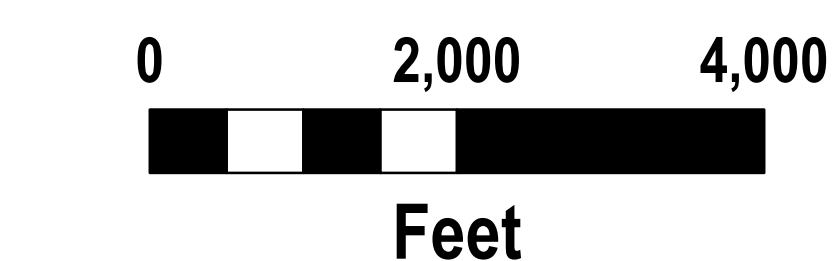
IR flown 2130, 11-20-2016

- 11-20-2016 Isolated Heat Sources
- 11-20-2016 Scattered Heat
- 11-20-2016 Intense Heat
- 11-20-2016 Heat Perimeter

To use a GeoPDF, Install PDF Maps App, by Avenza, available for Apple, Android & Windows Mobile Devices

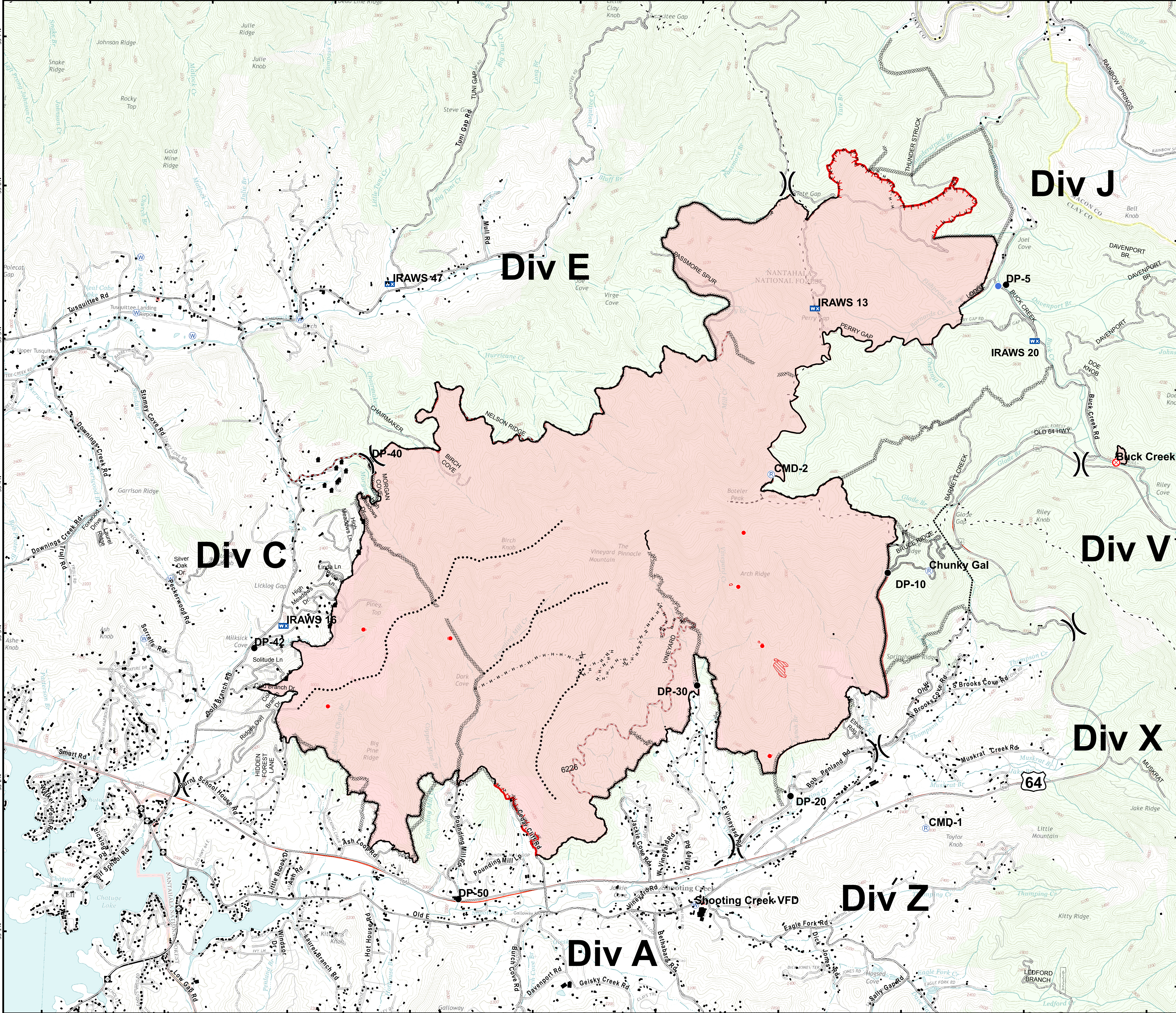


Download a GeoPDF



Information Shown is based on the best available data at the time of map production

11/21/2016 6:14:18 AM
NC StatePlane NAD83 Feet
C. Roberts, GISS



briefing_IR_ansi_e_land_2016 Boteler NCNCF160247