



Boteler Fire

11/22/2016 Day Shift

Approximate Infrared Acres as of 11/21/16
Boteler Fire 9,031 ac
Buck Creek 8 ac



INFRARED Briefing Map

NC-NCF-160247

- () Division
- Drop Point
- ⊗ Fire Origin
- Helispot
- Ⓡ Repeater
- Ⓜ Water Source
- Ⓜwx Mobile Weather Unit
- Ⓜ MedVac Site
- ▬ Uncontrolled Fire Edge
- ▬ Completed Dozer Line
- ▬ Completed Line
- Hand Line
- Road as Completed Line
- ⋯ Planned Secondary Line
- ⊗ Proposed Dozer Line
- ▬ Bladed Road
- ⋯ Power Line
- ⋯ Trail
- Structure Footprints

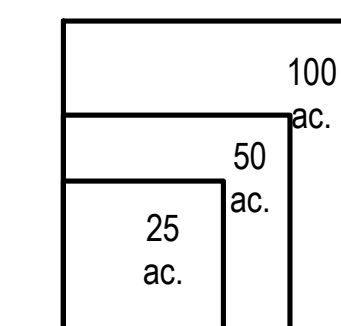
IR flown 2111, 11-21-2016

- 11-21-2016 Isolated Heat Sources
- ▨ 11-21-2016 Scattered Heat
- ▨ 11-21-2016 Intense Heat
- ▨ 11-21-2016 Heat Perimeter

To use a GeoPDF, Install PDF Maps App, by Avenza, available for Apple, Android & Windows Mobile Devices



Download a GeoPDF

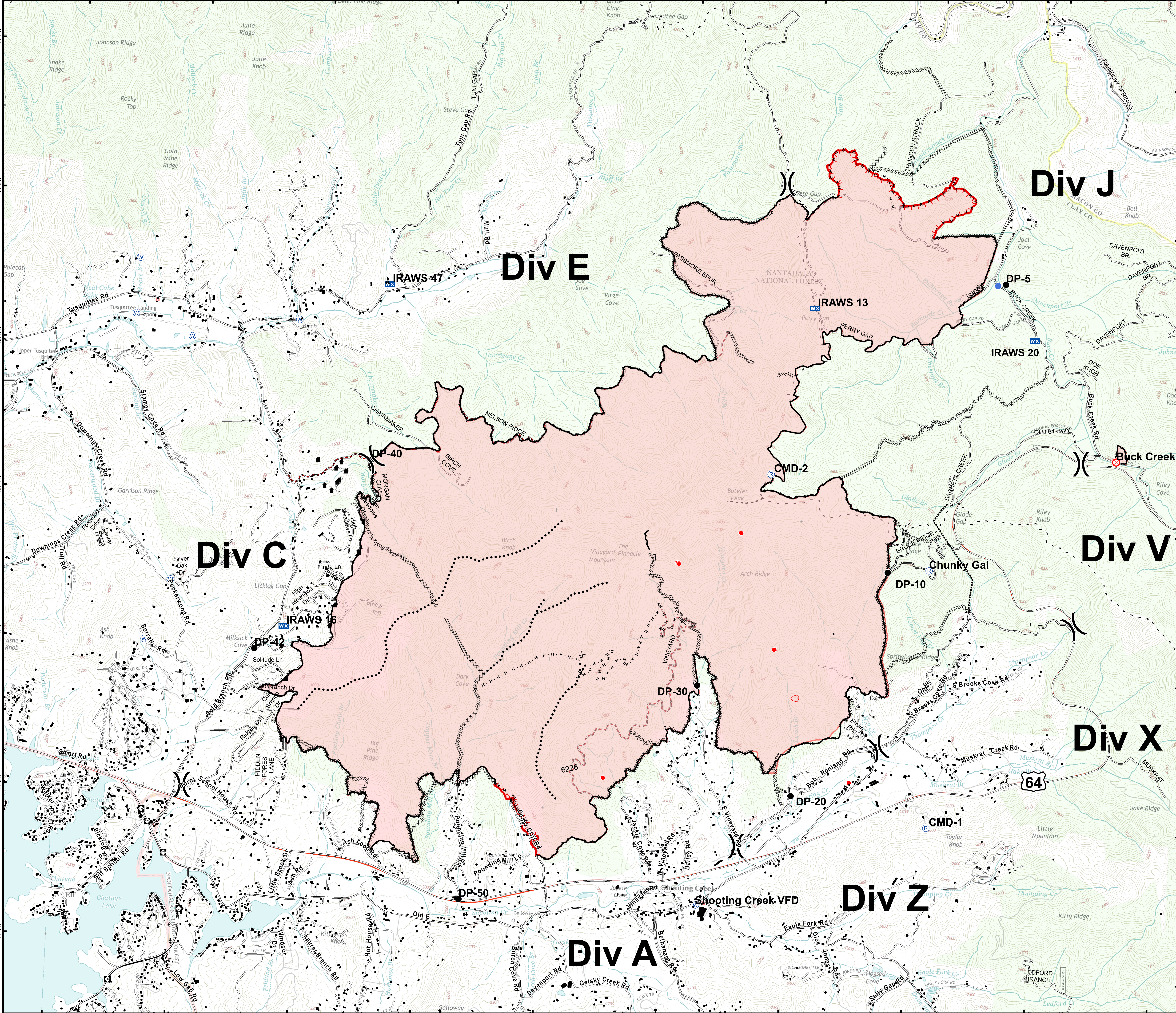


0 2,000 4,000

Feet

Information shown is based on the best available data at the time of map production

11/22/2016 6:16:42 AM
NC StatePlane NAD83 Feet
C. Roberts, GISS



briefing_IR_ansi_e_land_2016_Boteler_NCNC160247