

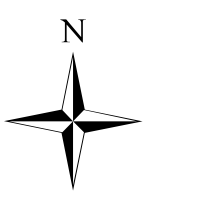


Tellico Fire

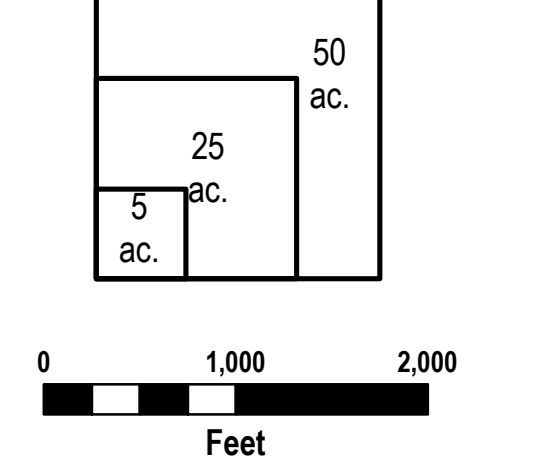
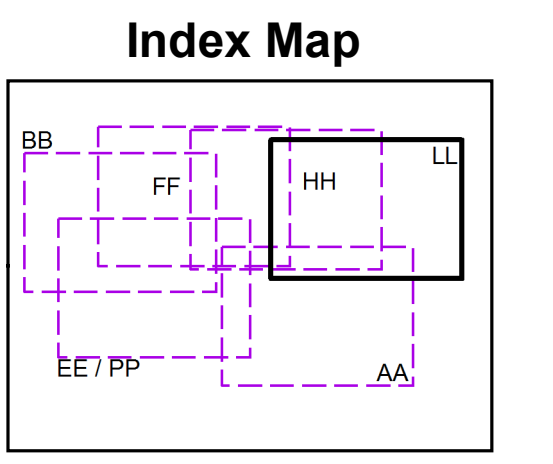
Ops Map

Div LL

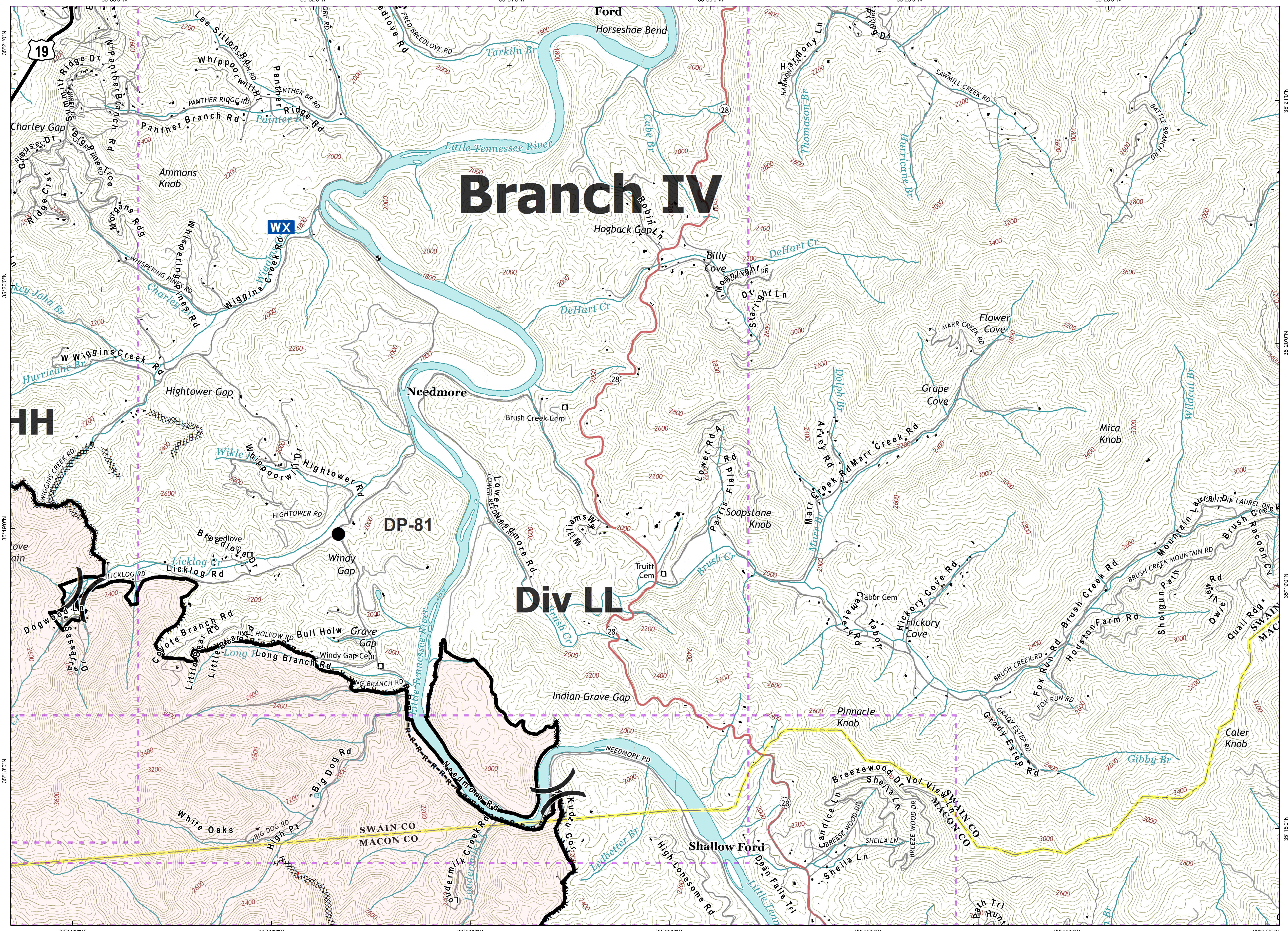
11/22/2016
Day Shift



- Branch
 - Division
 - Uncontrolled Fire Edge
 - Completed Dozer Line
 - Completed Line
 - Hand Line
 - Road as Completed Line
 - Drop Point
 - Water Source
 - Mobile Weather Unit
 - Trail
 - Trail of Tears
 - Structure
- 750 foot buffer - total width of 1,500 feet



Information shown is based on the best available data at the time of map production.
 Latest Intel: 20161121 @ 1930



Document Name: ops_tellico_20161121_2000_ansi_d_land_NCNC160280_1122day