



Boteler Fire

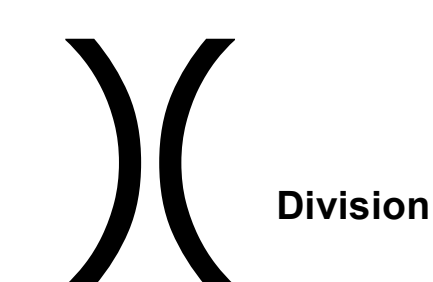
11/23/2016 Day Shift

Approximate Infrared Acres as of 11/22/16
Boteler Fire 9,036 ac
Buck Creek 8 ac



INFRARED Briefing Map

NC-NCF-160247



Division

- Drop Point
- Fire Origin
- Helispot
- Repeater
- Water Source
- Mobile Weather Unit
- MediVac Site

- Uncontrolled Fire Edge
- Completed Dozer Line
- Completed Line
- Hand Line
- Road as Completed Line
- Planned Secondary Line
- Proposed Dozer Line
- Bladed Road
- Power Line
- Trail
- Structure Footprints

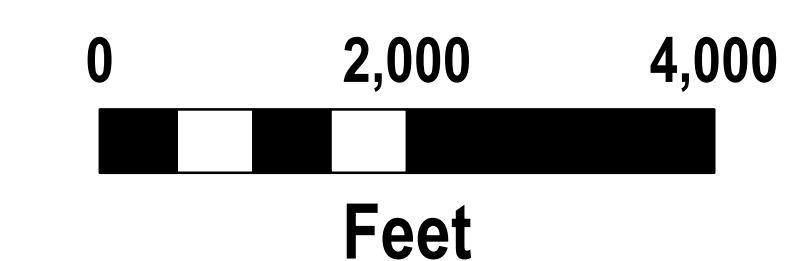
IR flown 2050, 11-22-2016

- 11-22-2016 Isolated Heat Sources
- 11-22-2016 Scattered Heat
- 11-22-2016 Intense Heat
- 11-22-2016 Heat Perimeter

To use a GeoPDF, Install PDF Maps App, by Avenza, available for Apple, Android & Windows Mobile Devices

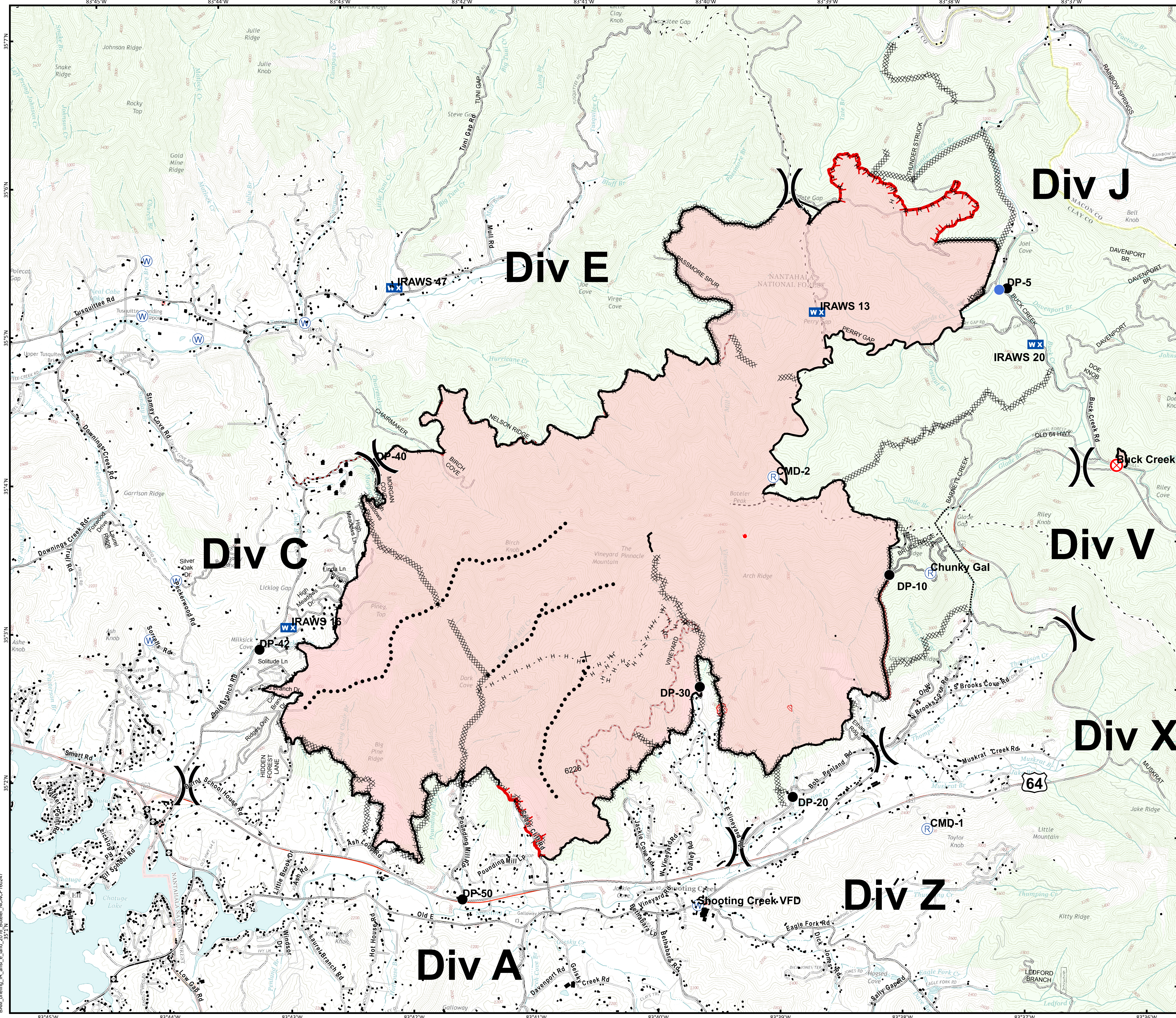


Download a GeoPDF



Information shown is based on the best available data at the time of map production

11/23/2016 5:38:20 AM
NC StatePlane NAD83 Feet
C. Roberts, GIS



BAM_briefing_IR_ansi_e_land_2016_Boteler_NCNCF160247