



# Boteler Fire

11/23/2016 Day Shift

Approximate Infrared Acres as of 11/22/16  
Boteler Fire 9,036 ac  
Buck Creek 8 ac



## INFRARED Briefing Map

NC-NCF-160247

- ( ) Division
- Drop Point
- ⊗ Fire Origin
- Hellsport
- Ⓡ Repeater
- Ⓜ Water Source
- Ⓜ wx Mobile Weather Unit
- Ⓜ MedVac Site
- Uncontrolled Fire Edge
- Completed Dozer Line
- Completed Line
- Hand Line
- Road as Completed Line
- Planned Secondary Line
- ⊗ Proposed Dozer Line
- Bladed Road
- Power Line
- Trail
- Structure Footprints

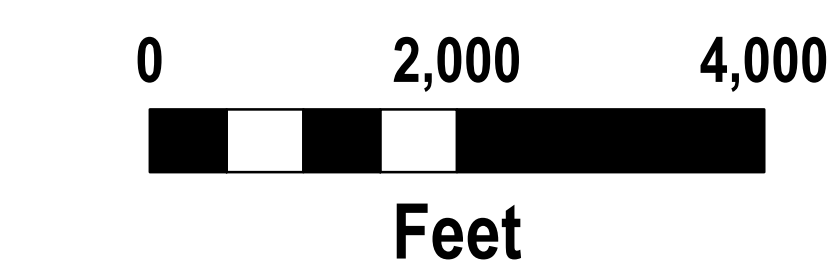
### IR flown 2050, 11-22-2016

- 11-22-2016 Isolated Heat Sources
- 11-22-2016 Scattered Heat
- 11-22-2016 Intense Heat
- 11-22-2016 Heat Perimeter

To use a GeoPDF, Install PDF Maps App, by Avenza, available for Apple, Android & Windows Mobile Devices

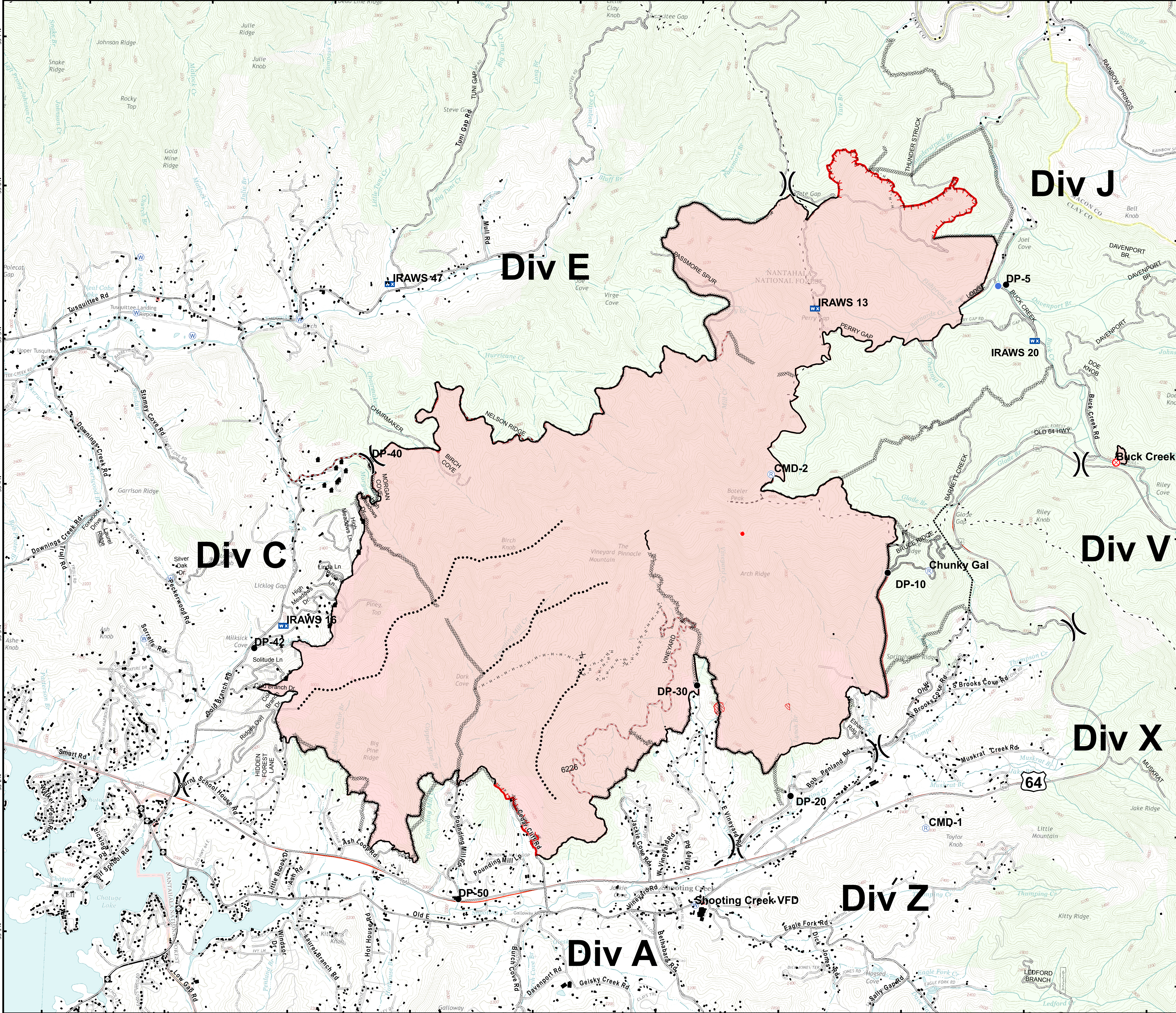


Download a GeoPDF



Information shown is based on the best available data at the time of map production

11/23/2016 5:43:50 AM  
NC StatePlane NAD83 Feet  
D. Paris, GISS(T)



briefing\_IR\_ansi\_e\_land\_2016\_Boteler\_NCNC160247