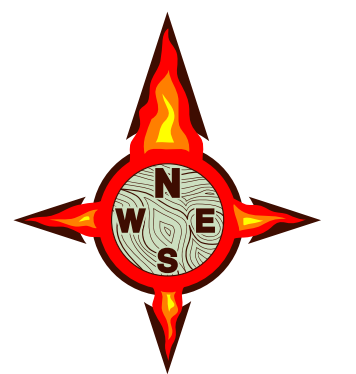




Boteler Fire

11/25/2016 Day Shift

Approximate Infrared Acres as of 11/24/16
Boteler Fire 9,036 ac
Buck Creek 8 ac



INFRARED Briefing Map

NC-NCF-160247

IR flown 0139, 11-25-2016

- Drop Point
- 🔥 Fire Location
- Ⓜ Helibase
- Helispot
- Hot Spot
- WX Mobile Weather Unit
- Ⓡ Repeater
- Ⓜ Water Source
- ⎓ Division Break

- Uncontrolled Fire Edge
- Completed Line
- Road as Completed Line
- Completed Dozer Line
- Hand Line
- 11-24-2016 Isolated Heat Sources
- 11-24-2016 Scattered Heat
- 11-24-2016 Intense Heat
- Bladed Road
- Power Line
- Trail
- Structure Footprints

To use a GeoPDF, install PDF Maps App, by Avenza, available for Apple, Android & Windows Mobile Devices

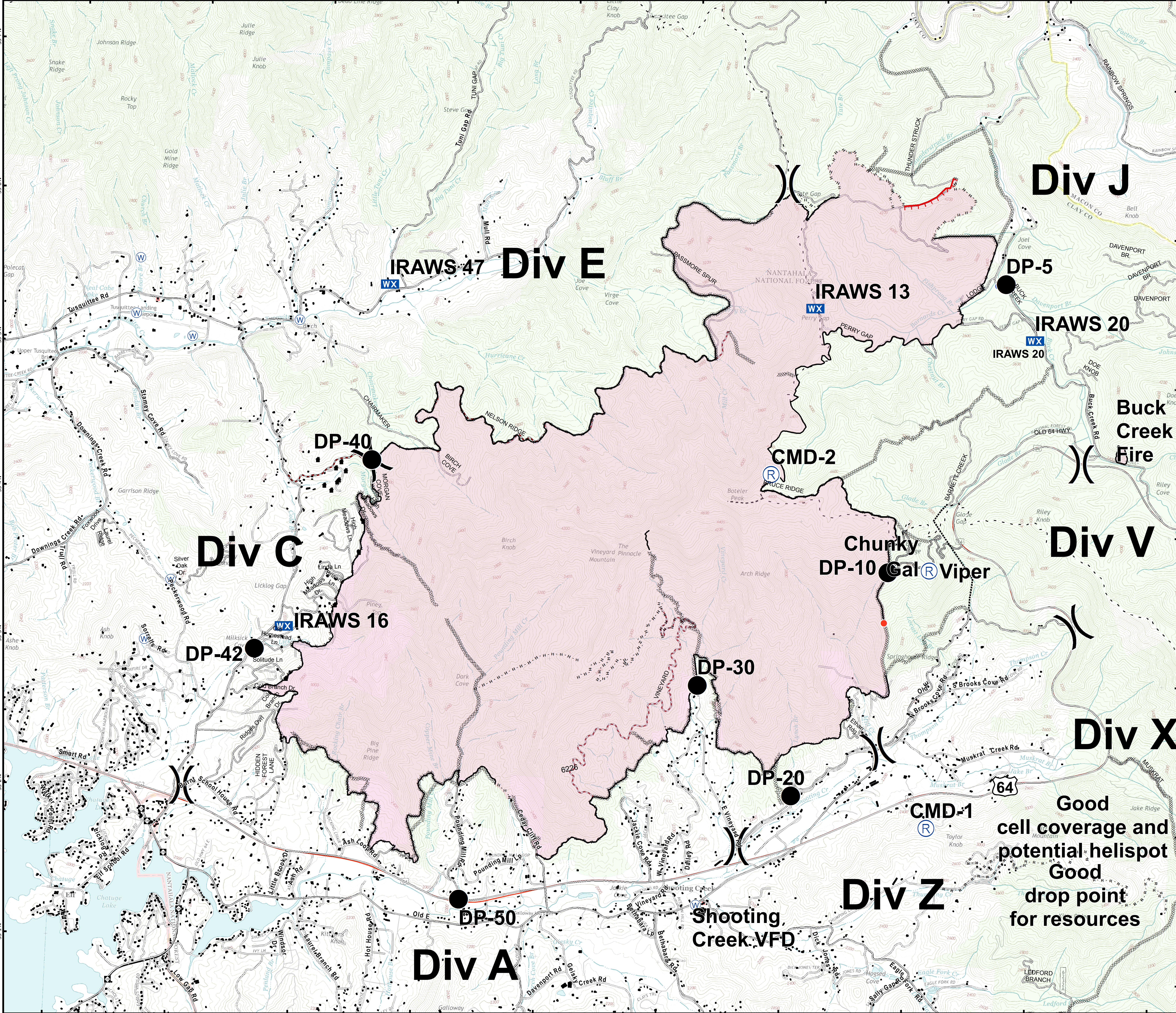
Download a GeoPDF



Feet

Information shown is based on the best available data at the time of map production

11/25/2016 5:32:43 AM
NC StatePlane NAD83 Feet
D. Paris, GIS



Good cell coverage and potential helispot
Good drop point for resources

BAM_Boteler_briefing_IR_area_e_land_20161125_NCNC160247