

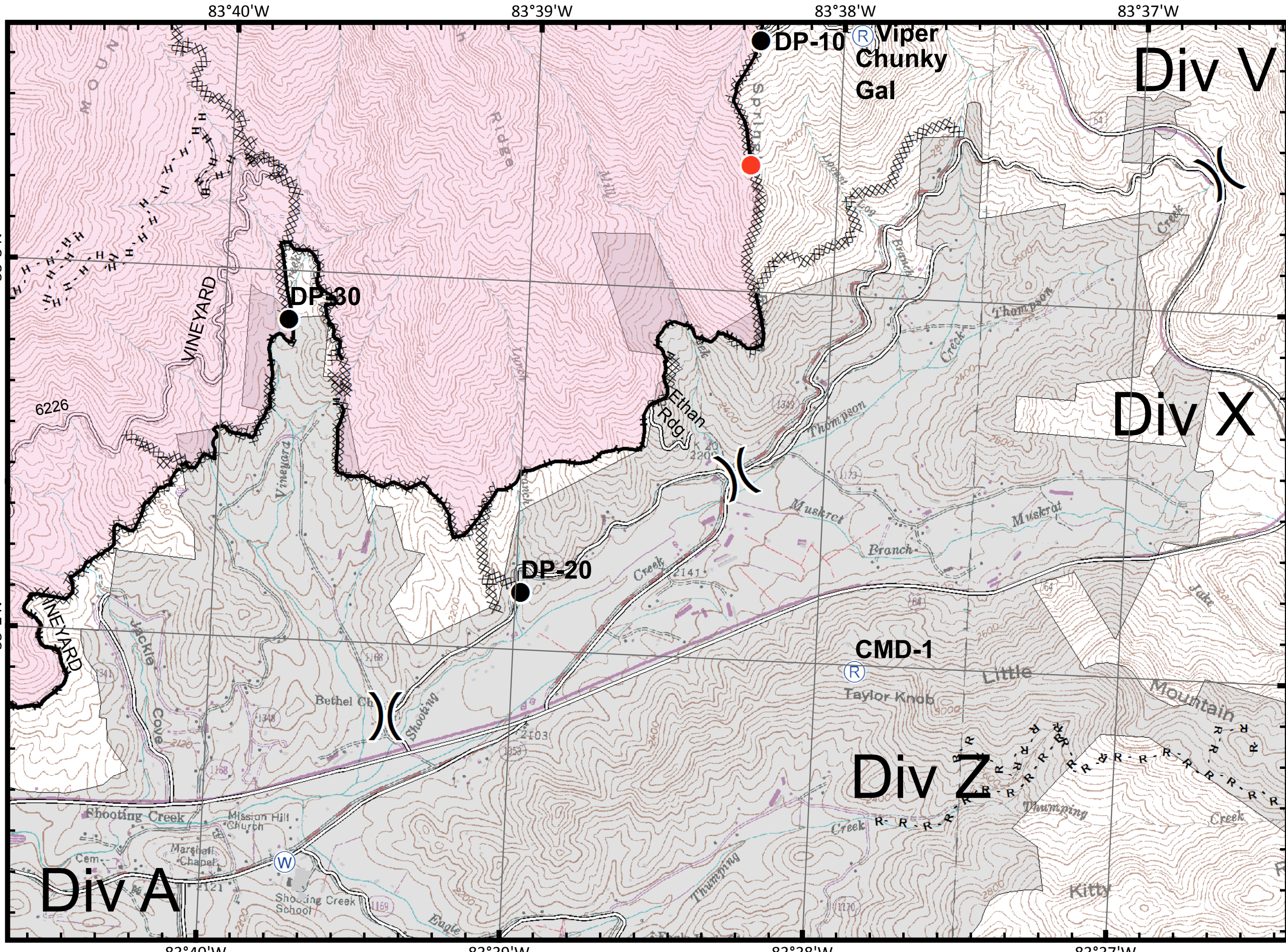
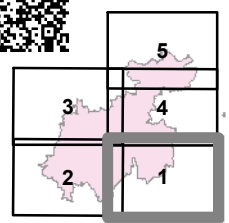


Boteler Fire

NC-NCF-160247
IAP Tile Div X/Z

11/25/2016
Day Shift

- Drop Point
- Helispot
- Hot Spot
- Mobile Weather Unit
- Repeater
- Water Source
- Division Break
- Uncontrolled Fire Edge
- Completed Line
- R - Road as Completed Line
- Completed Dozer Line
- H - Hand Line



IAP_Boteler_Bx11_land_20161124_2029_NCNCF160247_20161125day



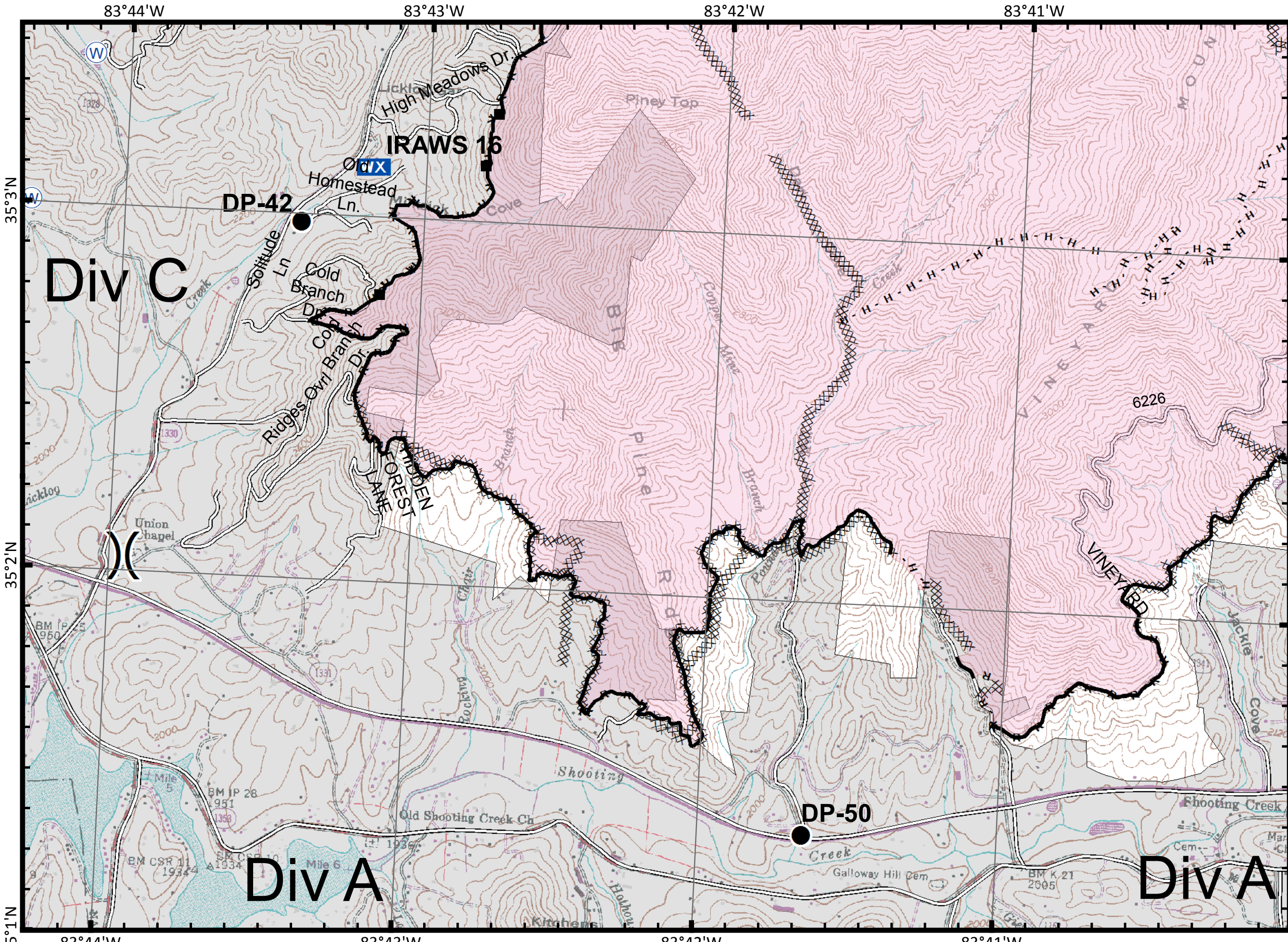
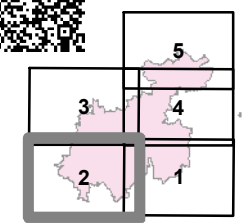
Boteler Fire

NC-NCF-160247
IAP Tile Div A/C

11/25/2016
Day Shift

- Drop Point
- Helispot
- Hot Spot
- WX Mobile Weather Unit
- Ⓡ Repeater
- Ⓜ Water Source
- ⌋ Division Break

- ▬ Uncontrolled Fire Edge
- ▬ Completed Line
- R - Road as Completed Line
- ▬ Completed Dozer Line
- H - Hand Line



IAP_Boteler_Bx11_land_20161124_2029_NCNC160247_20161125day



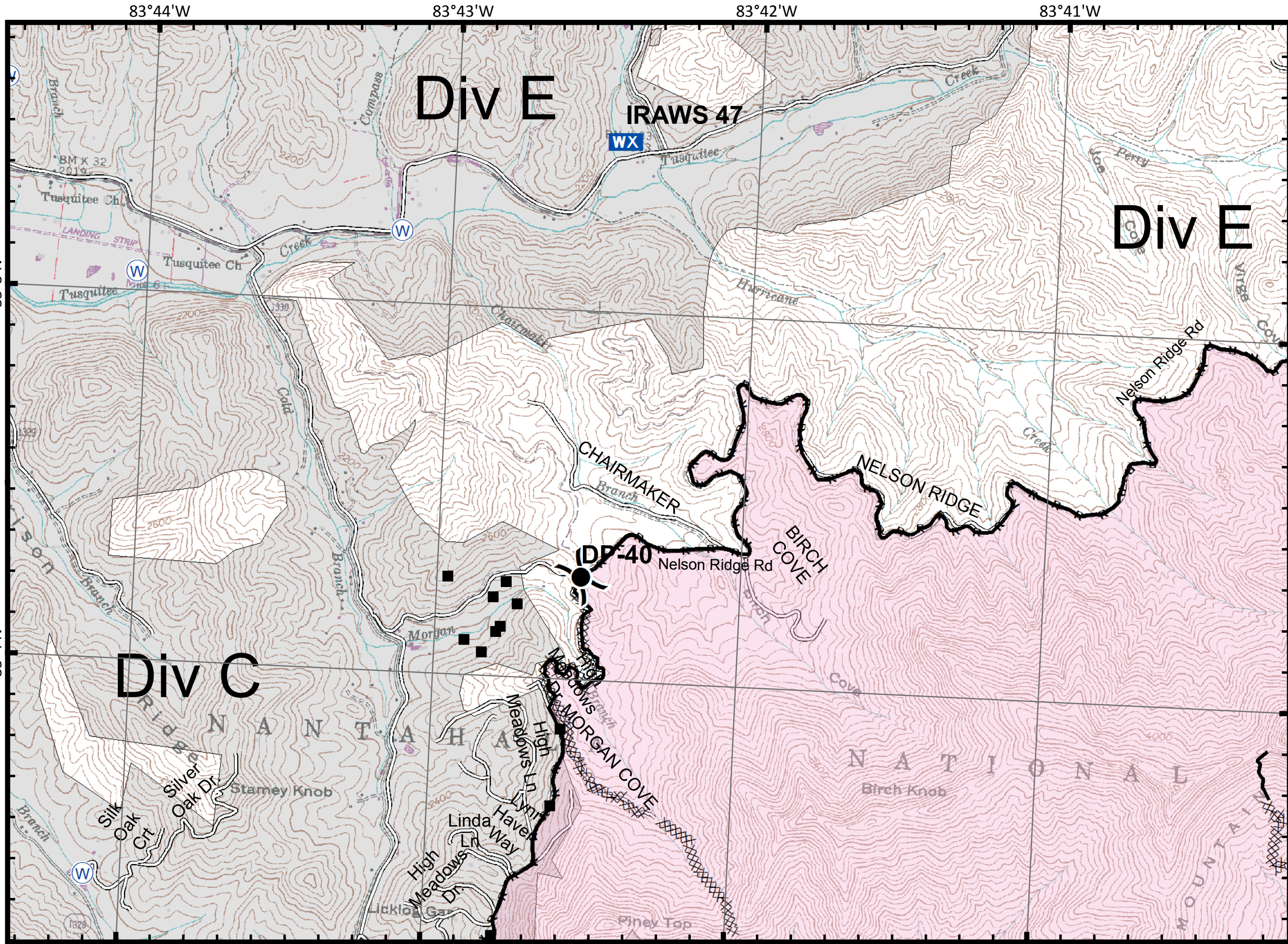
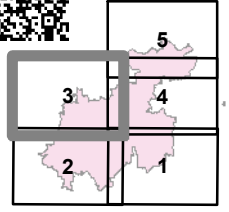
Boteler Fire

NC-NCF-160247
IAP Tile Div C/E

11/25/2016
Day Shift

- Drop Point
- Helispot
- Hot Spot
- WX Mobile Weather Unit
- Ⓡ Repeater
- Ⓦ Water Source
- ⌋ Division Break

- ▬ Uncontrolled Fire Edge
- ▬ Completed Line
- R - Road as Completed Line
- ▨ Completed Dozer Line
- H - Hand Line



83°44'W 83°43'W 83°42'W 83°41'W

35°5'N

35°5'N

35°4'N

35°4'N

83°44'W 83°43'W 83°42'W 83°41'W

IAP_Boteler_8x11_land_20161124_2029_NCNC160247_20161125day



Boteler Fire

NC-NCF-160247
IAP Tile Div J/V

11/25/2016
Day Shift

- Drop Point
- Helispot
- Hot Spot

WX Mobile Weather Unit

R Repeater

W Water Source

) (Division Break

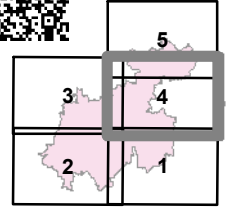
Uncontrolled Fire Edge

Completed Line

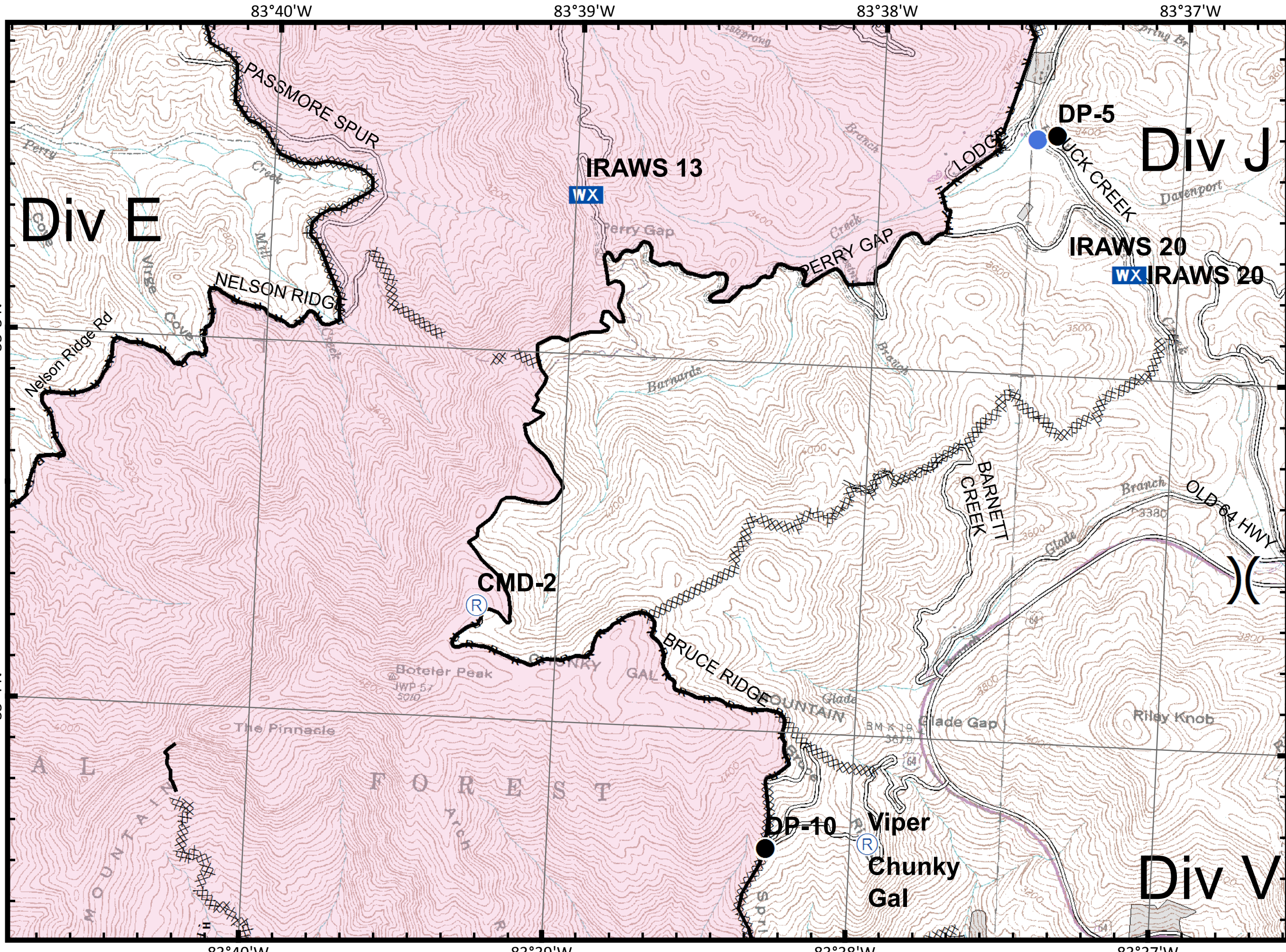
R - Road as Completed Line

Completed Dozer Line

H - Hand Line



11/24/2016 8:39:08 PM
NC StatePlane NAD83 Feet
D. Paris, GISS(T)



IAP_Boteler_Bx11_land_20161124_2029_NCNCF160247_20161125day

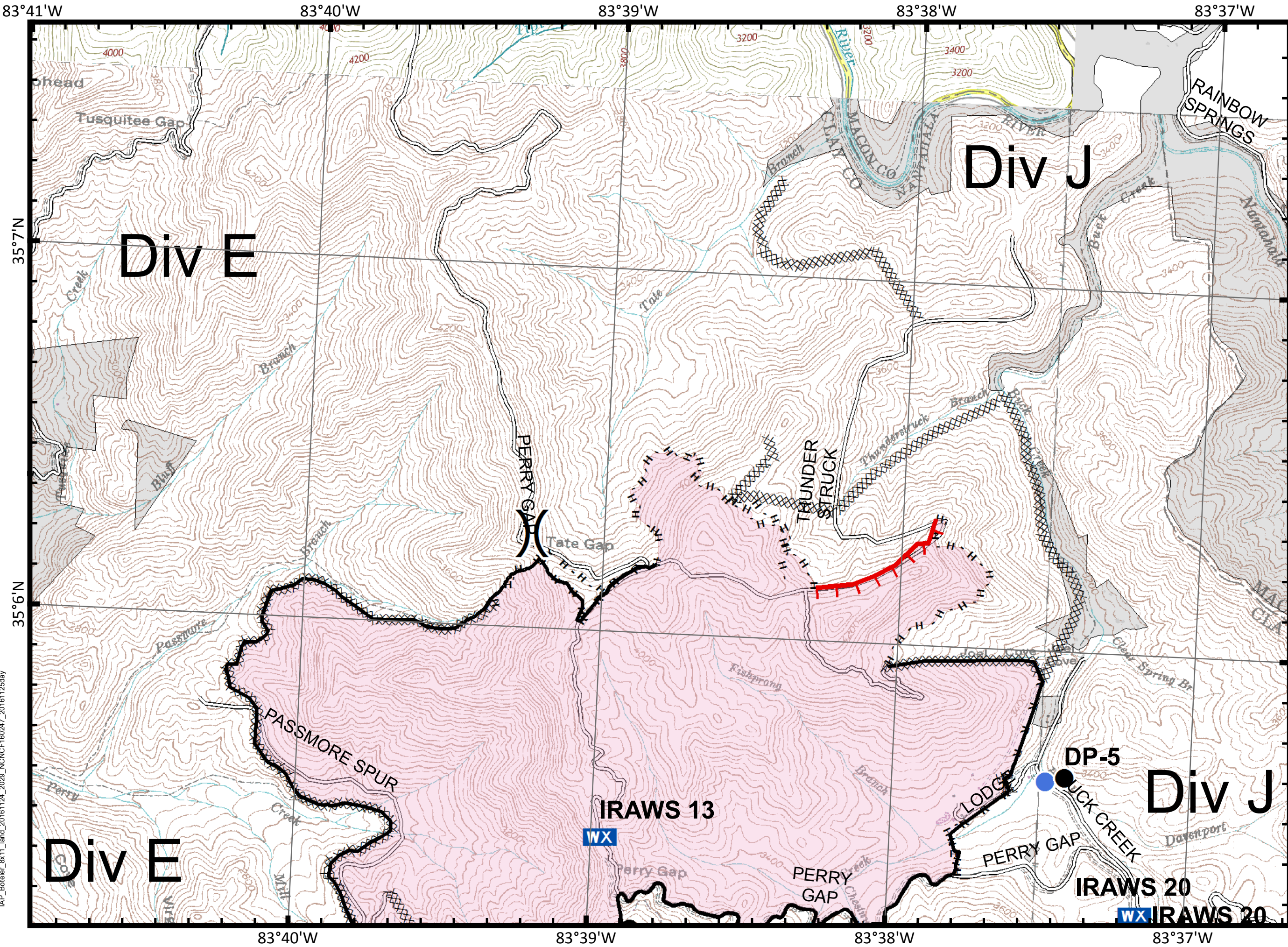
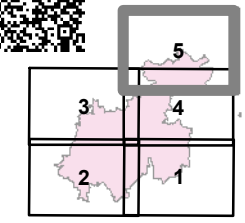


Boteler Fire

NC-NCF-160247
IAP Tile Div E/J

11/25/2016
Day Shift

- Drop Point
- Helispot
- Hot Spot
- Mobile Weather Unit
- Repeater
- Water Source
- Division Break
- Uncontrolled Fire Edge
- Completed Line
- Road as Completed Line
- Completed Dozer Line
- Hand Line



IAP_Boteler_8x11_land_20161124_2029_NCNCF160247_20161125day