



# Boteler Fire

11/25/2016 Day Shift

Approximate Infrared Acres as of 11/24/16  
Boteler Fire 9,036 ac  
Buck Creek 8 ac



## Briefing

NC-NCF-160247

- Drop Point
- Helibase
- Helispot
- Mobile Weather Unit
- Repeater
- Water Source
- Division Break
- Uncontrolled Fire Edge
- Completed Line
- Road as Completed Line
- Completed Dozer Line
- Hand Line
- Bladed Road
- Power Line
- Trail
- Structure Footprints

To use a GeoPDF, install PDF Maps App, by Avenza, available for Apple, Android & Windows Mobile Devices



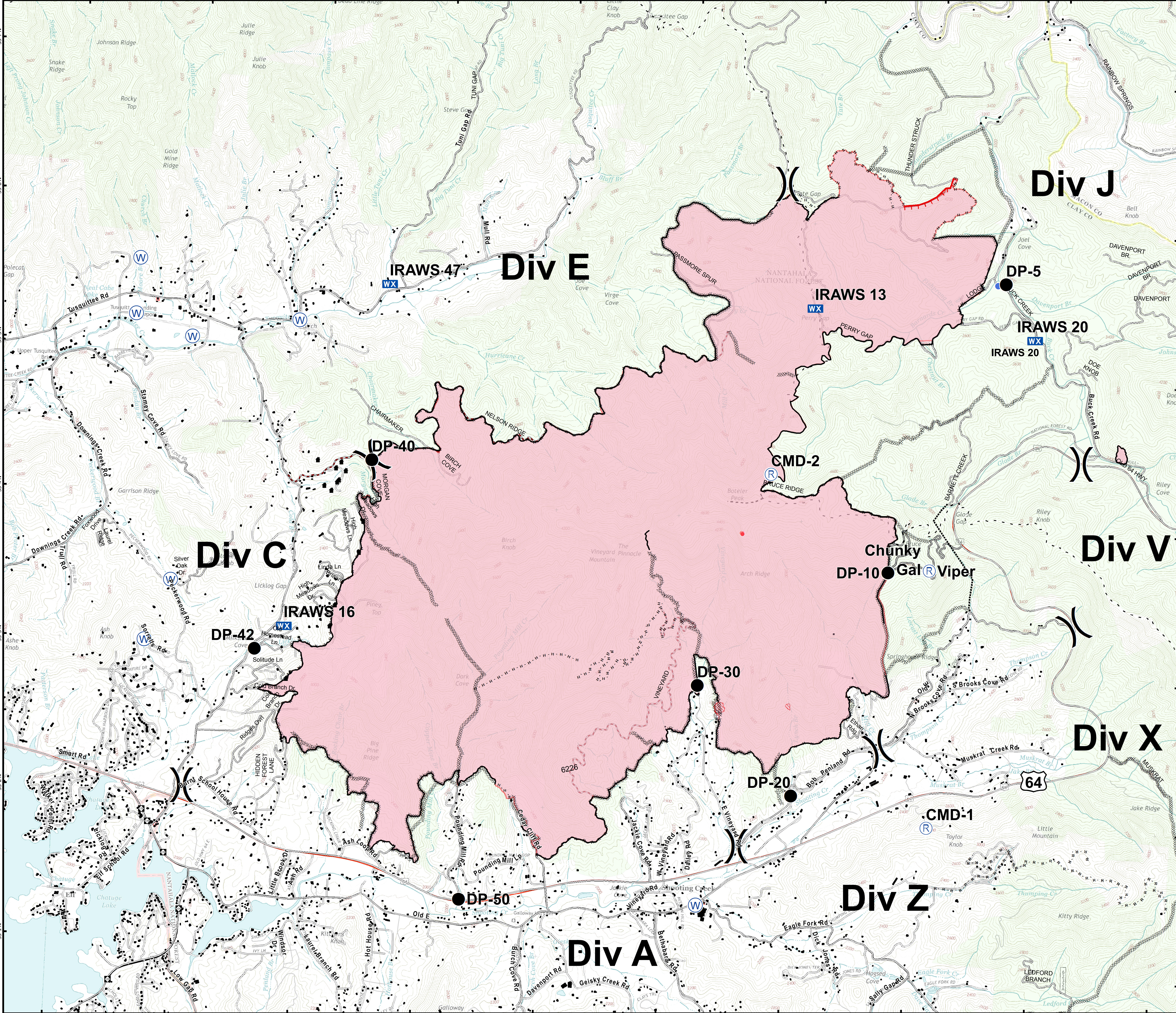
Download a GeoPDF

0 2,000 4,000

Feet

Information shown is based on the best available data at the time of map production

11/24/2016 9:39:52 PM  
NC StatePlane NAD83 Feet  
D. Paris, GISS(T)



briefing\_Boteler\_and\_e\_land\_20161124\_2137\_NCNC160247\_20161125day