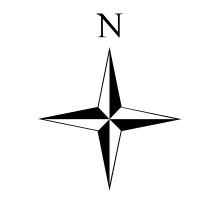




Maple Springs

Infrared

11/25/2016
Day Shift



NC-NCF-160295

Approximate
Acres:
7,788

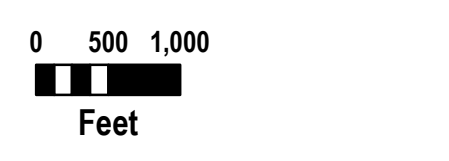
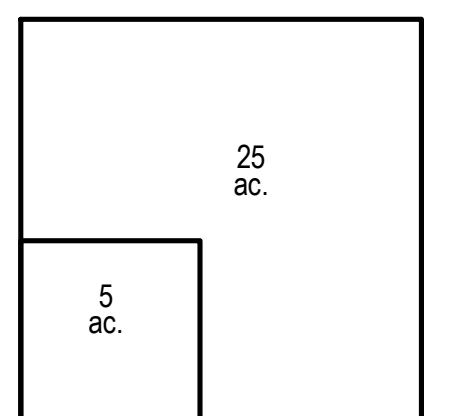
IR Data (20161125 @ 0149)

- Isolated Heat Source
- Drop Point
- Helispot
- W Water Source
- Division Break
- Uncontrolled Fire Edge
- Completed Line
- Completed Dozer Line
- H - H Hand Line
- Fire Perimeter

To use a GeoPDF
install PDF Maps App
by Avenza available for:
Apple, Android, &
Windows
mobile devices.



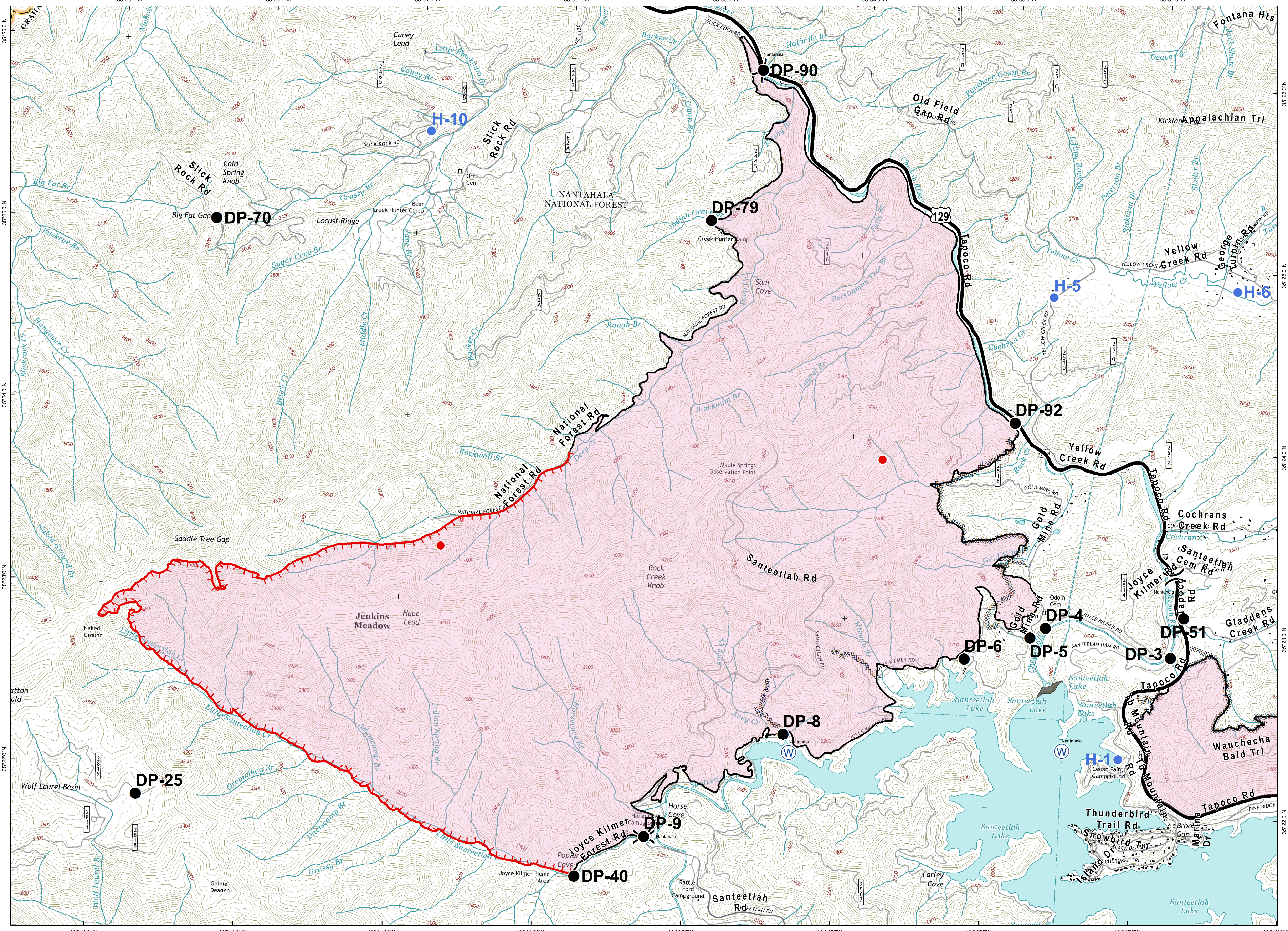
Download a GeoPDF



Information shown is based on the best available data at the time of map production.

Latest info: 20161125 @ 0139

20161125 @ 0513
Map Datum: NAD83 Feet
Author: L. Allen Smith, GIS



Document Name: ops\IR_MapleSprings_20161125_0740_ansi_d_land_NCNCF160354_1125day_BlueTeam