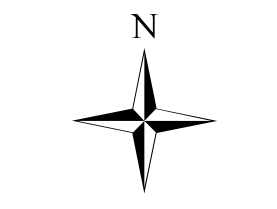


# Branch III

# Branch IV

**Infrared**  
**Tellico Fire**  
**Ops Map**

11/25/2016  
 Day Shift



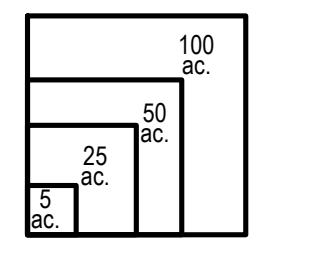
NC-NCF-160280

Approximate  
 Acres:  
 13,874

Approximate  
 IR Acres:  
 13,874  
 IR Growth: 0 ac.

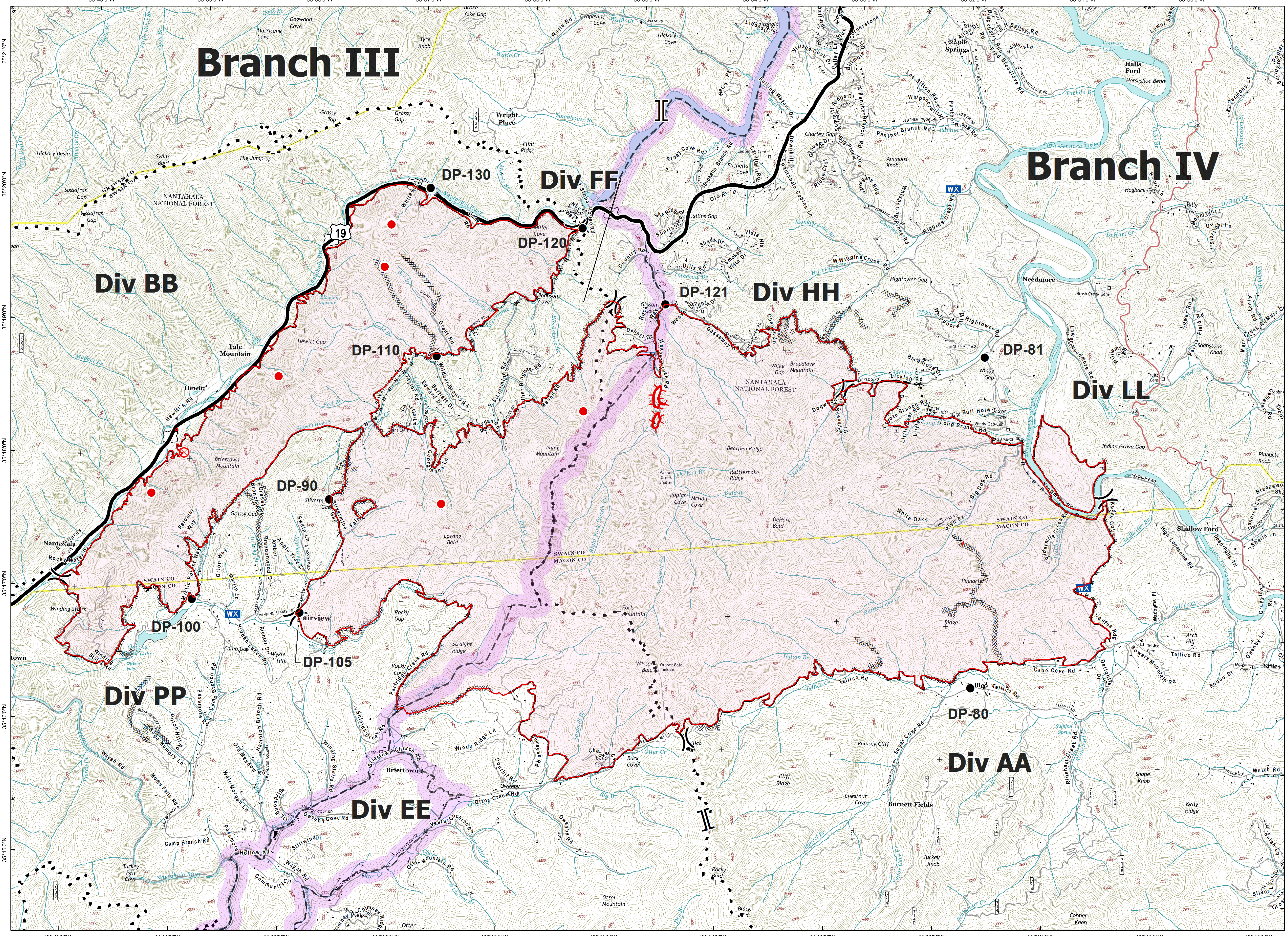
- Isolated Heat Source
- ⊗ Fire Origin
- ||** Branch
- )** Division
- ▬ Uncontrolled Fire Edge
- Completed Dozer Line
- Completed Line
- H - H -** Hand Line
- R - R -** Road as Completed Line
- Drop Point
- Water Source
- Mobile Weather Unit
- Trail
- Trail of Tears
- Structure

Note: No Intense or Scattered Heat Detected



Information shown is based on the best available data at the time of map production.  
 Latest intel: 20161122 @ 2045

2016112 @ 0530  
 Map Datum: NAD83 Feet  
 Author: C. McCurdy



Document Name: opsr\_tellico\_20161125\_0530\_ansi\_c\_land\_NCNC160280\_1125day\_BlueTeam