



# Boteler Fire

11/26/2016 Day Shift

Approximate Acres as of 11/25/16  
Boteler Fire 9,036 ac  
Buck Creek 8 ac



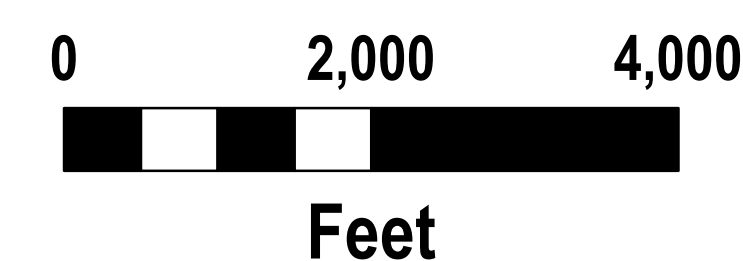
## Briefing Map

NC-NCF-160247

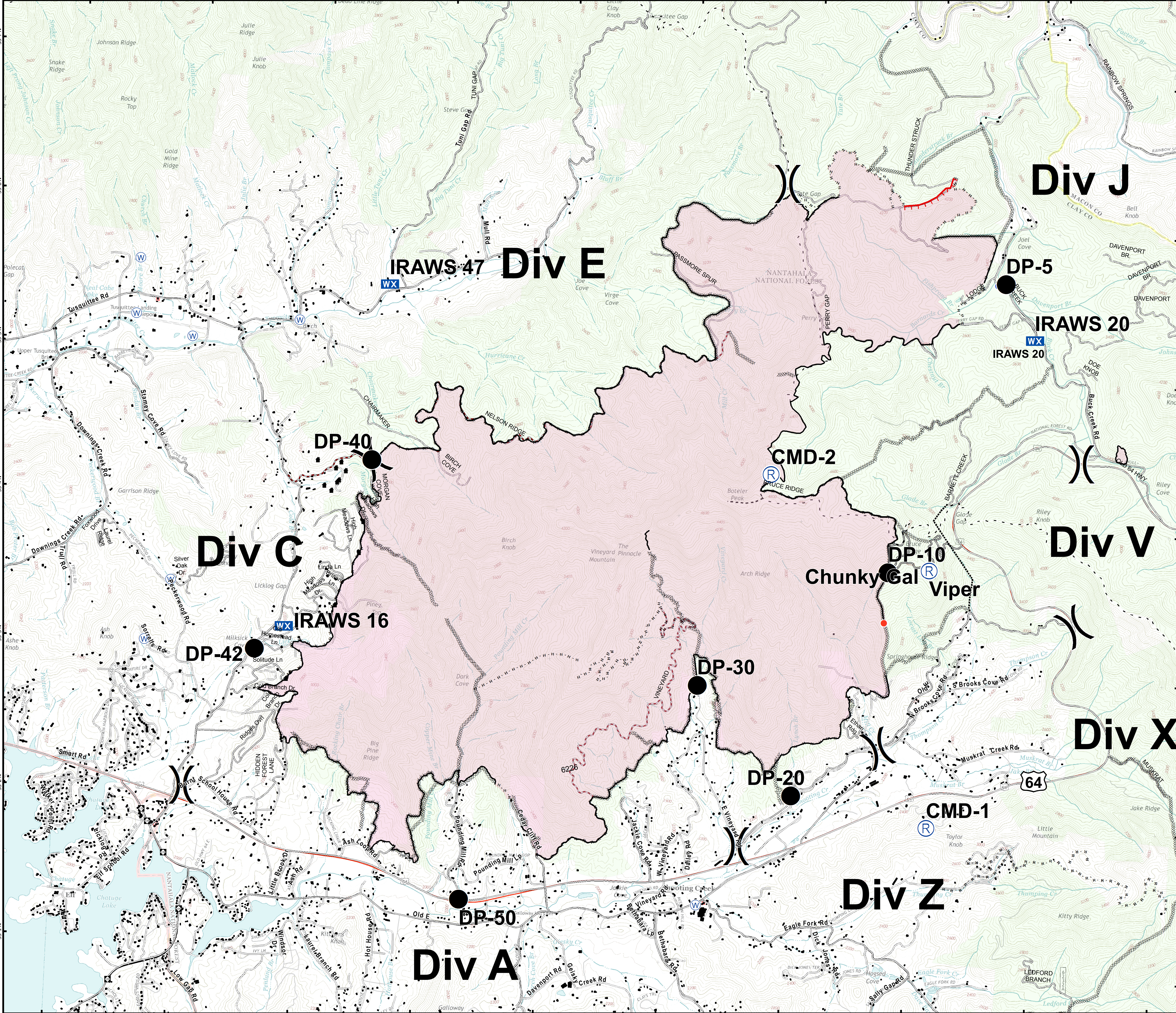
- Drop Point
- 🔥 Fire Location
- Ⓜ Helibase
- Helipod
- Hot Spot
- WX Mobile Weather Unit
- Ⓡ Repeater
- Ⓜ Water Source
- )) Division Break
- Uncontrolled Fire Edge
- Completed Line
- R-R-R Road as Completed Line
- XXXXX Completed Dozer Line
- - - Hand Line
- Bladed Road
- ..... Power Line
- - - Trail
- Structure Footprints

To use a GeoPDF, Install PDF Maps App, by Avenza, available for Apple, Android & Windows Mobile Devices

Download a GeoPDF



Information shown is based on the best available data at the time of map production  
11/25/2016 10:28:21 PM  
NC StatePlane NAD83 Feet  
D. Paris, GISS



BAM\_Boteler\_briefing\_30x60\_land\_2016\_NCNCF160247