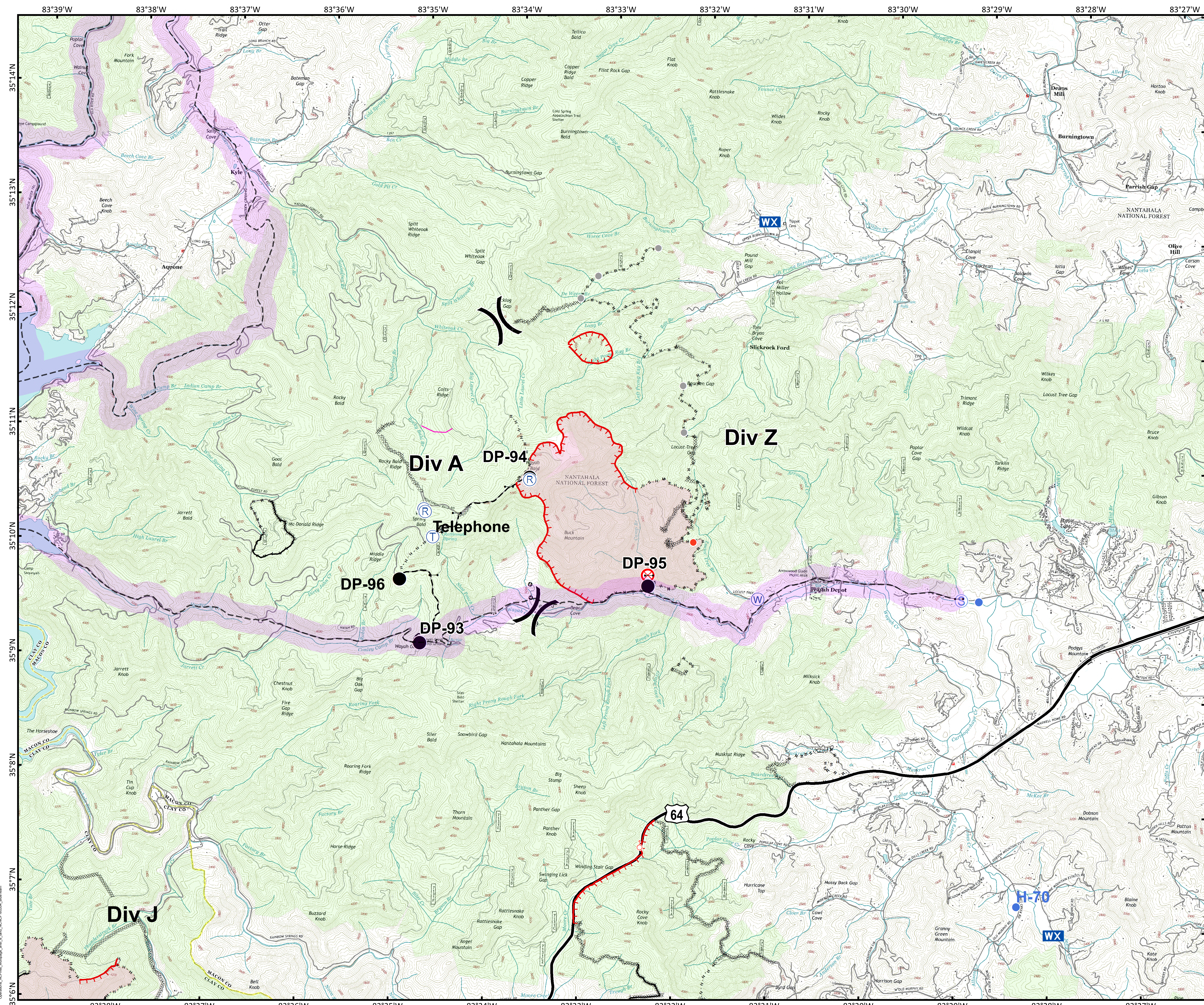




Approximate
Acreage:
1,335



- Drop Point
- ⊗ Fire Origin
- ↔ Gate
- Hot Spot
- Ⓡ Repeater
- Uncontrolled Fire Edge
- Road as Completed Line
- ⊗ Completed Dozer Line
- Hand Line
- Planned Fire Line
- Fire Perimeter
- Trail of Tears
- 1,500 foot Buffer
- Structure



0 0.25 0.5 1 Miles

Information shown is based on the best available data at the time of map production.

Datum: North American 1983
Units: Foot US
Author: Blue Team GIS