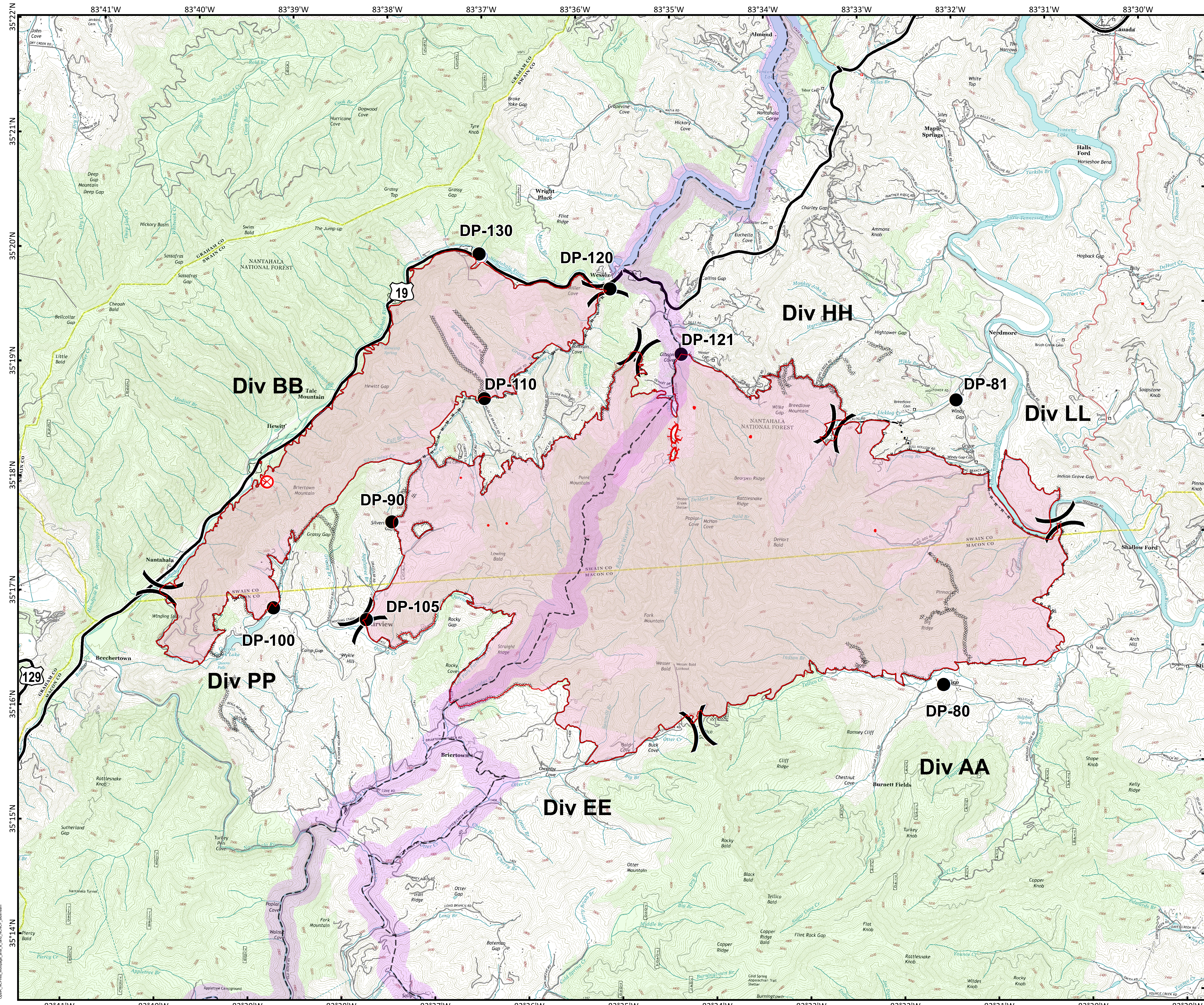


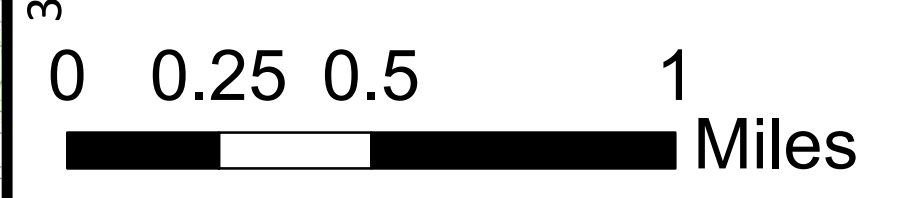


Approximate
Acreage:
13,874



- Trail of Tears
- 1,500 foot Buffer
- Drop Point
- ⊗ Fire Origin
- W Water Source
-) Division Break
- Uncontrolled Fire Edge
- Completed Line
- R-R Road as Completed Line
- Completed Dozer Line
- Hand Line
- Planned Fire Line
- Fire Perimeter
- Structure

Download a GeoPDF



Information shown is based on the best available data at the time of map production.

Datum: North American 1983
Units: Foot US
Author: Blue Team GIS