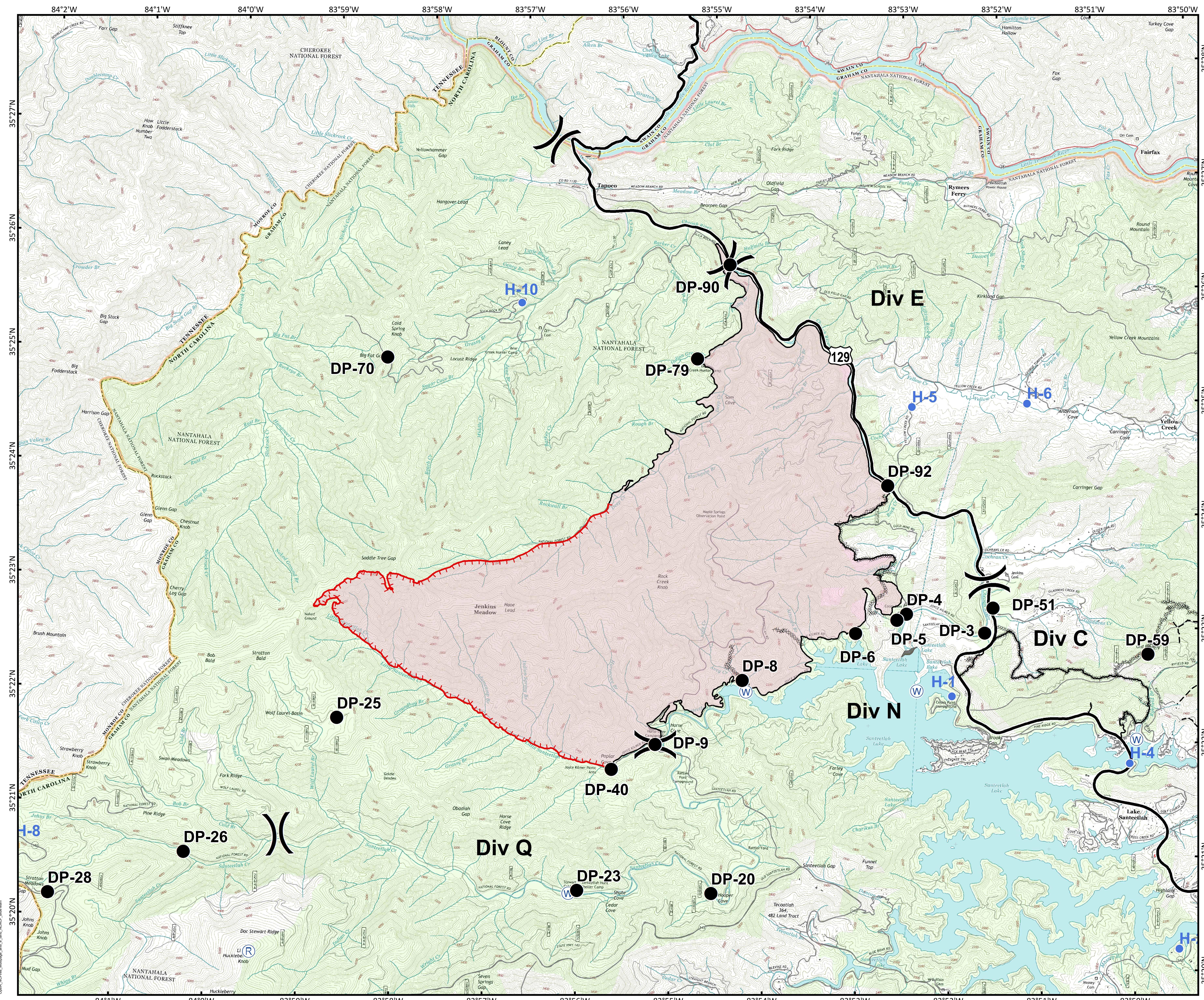


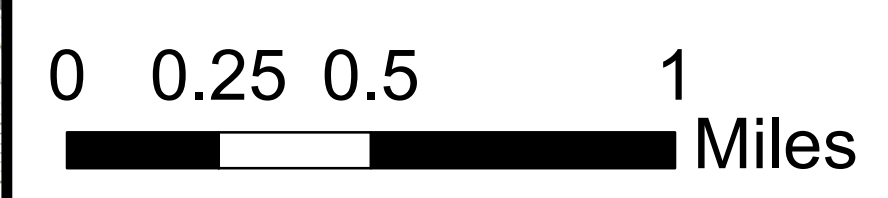


Approximate
Acreage:
7,779



- Drop Point
- ⊕ Water Source
-) Division Break
- Uncontrolled Fire Edge
- Completed Line
- ⋯ Completed Dozer Line
- Hand Line
- Fire Perimeter
- Structure

Download a GeoPDF



Information shown is based on the best available data at the time of map production.

Datum: North American 1983
Units: Foot US
Author: Blue Team GIS

Copyright, NCF/Inc, Maltbag, Inc. All Rights Reserved.