



Approximate  
Acreage:  
13,874



- Drop Point
- ⊗ Fire Origin
- Ⓜ Water Source
- ) Division Break

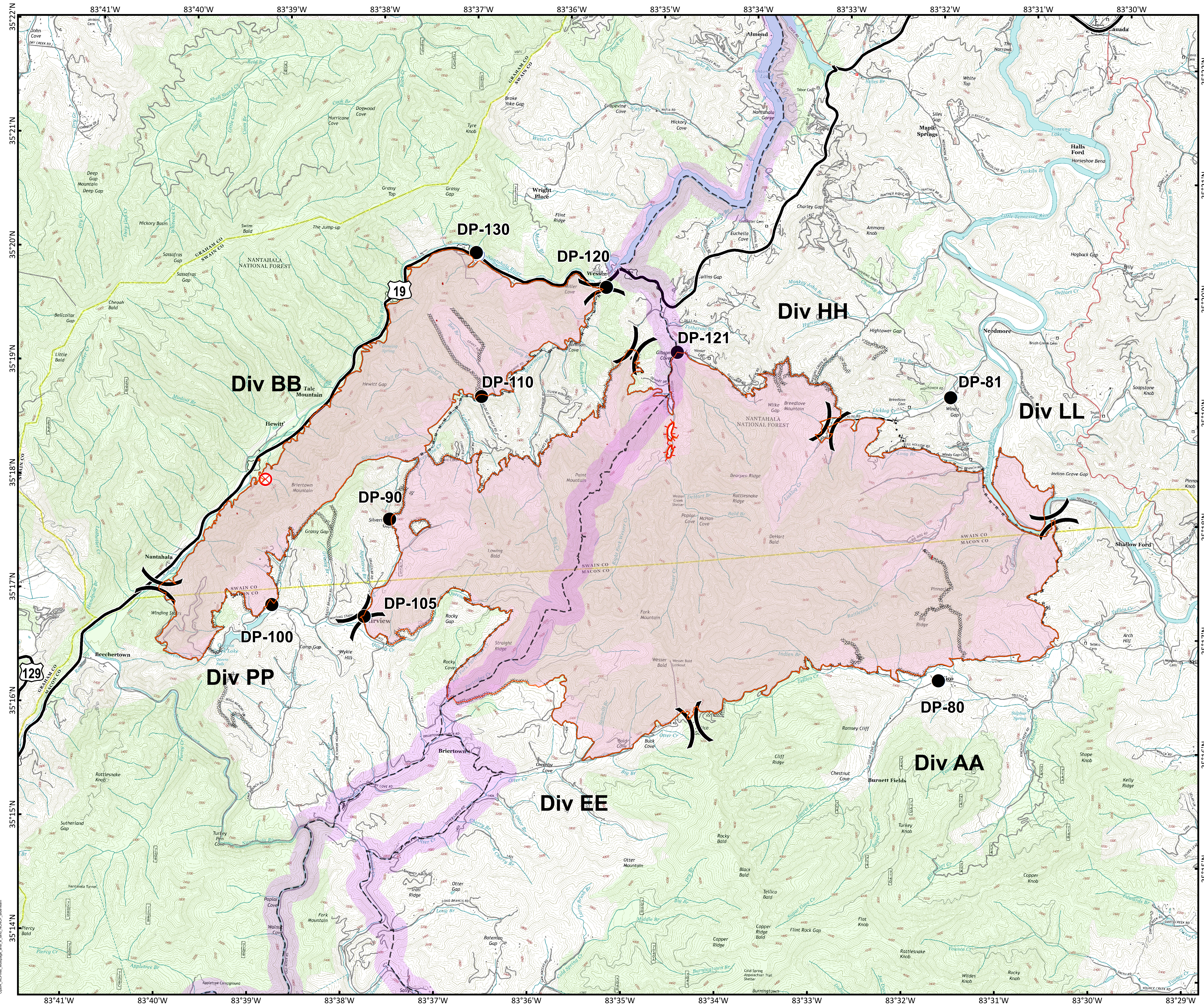
- Uncontrolled Fire Edge
- Completed Line
- Road as Completed Line
- ⊗ Completed Dozer Line
- Hand Line
- Planned Fire Line
- IsolatedHeat
- HeatPerimeter
- Fire Perimeter
- Trail of Tears
- 1,500 foot Buffer
- Structure



0 0.25 0.5 1 Miles

Information shown is based on the best available data at the time of map production.

Datum: North American 1983  
Units: Foot US  
Author: Blue Team GIS



Copyright, NCF, Maltage, Inc. All Rights Reserved.