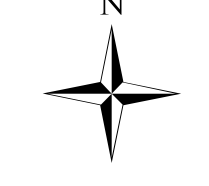


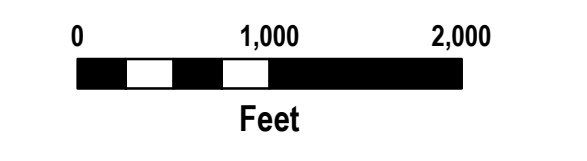
Tellico

**Branch III
Div FF
IAP Tiles**

11/26/2016
Day Shift

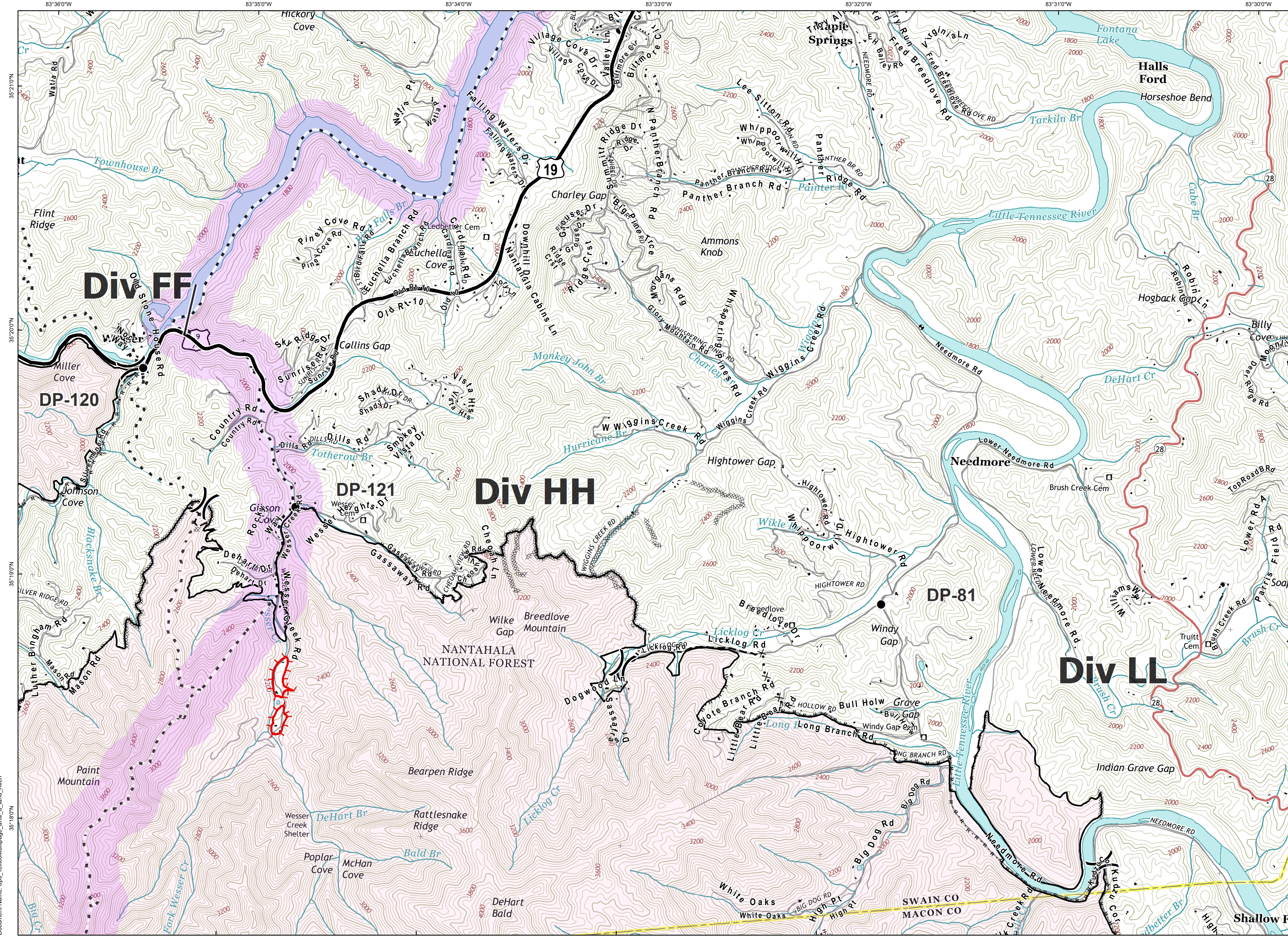


- Drop Point
- Fire Origin
- Water Source
- Division Break
- Uncontrolled Fire Edge
- Completed Line
- Road as Completed Line
- Completed Dozer Line
- Hand Line
- Planned Fire Line
- Wildfire Daily Fire Perimeter
- Structures
- Trail of Tears
750 foot buffer - total width of 1,500 feet



Information shown is based on the best available data at the time of map production.

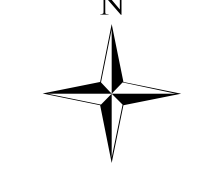
Document Name: ops_tellicoMultipage_ansi_d_land_Allen



Tellico

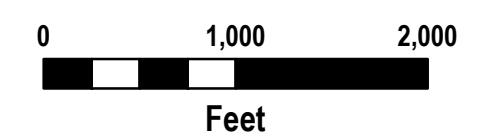
**Branch III
Div HH
IAP Tiles**

11/26/2016
Day Shift



- Drop Point
- Division Break
- Uncontrolled Fire Edge
- Completed Line
- Road as Completed Line
- Completed Dozer Line
- Hand Line
- Proposed Dozer Line
- Planned Fire Line
- Wildfire Daily Fire Perimeter
- Structures
- Trail of Tears
750 foot buffer - total width of 1,500 feet

Download a GeoPDF



Information shown is based on the best available data at the time of map production.

M. Dodd, GISS
 Date: 11/25/2016
 Datum: North American 1983

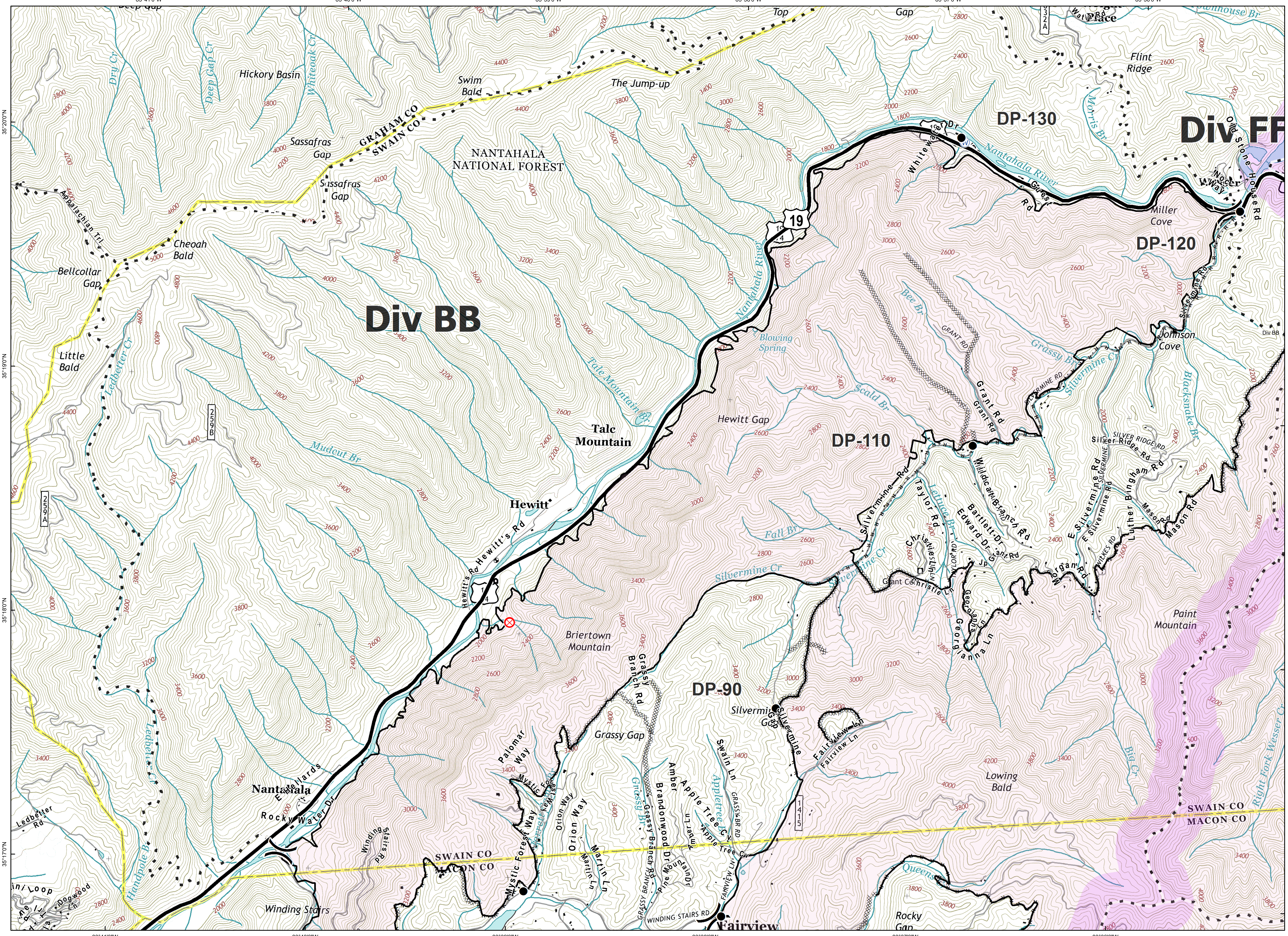
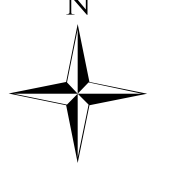
Document Name: ops_tellicoMultipage_ans1_d_land_Allen



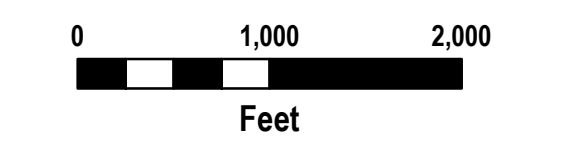
Tellico

Branch III
Div BB
IAP Tiles

11/26/2016
Day Shift

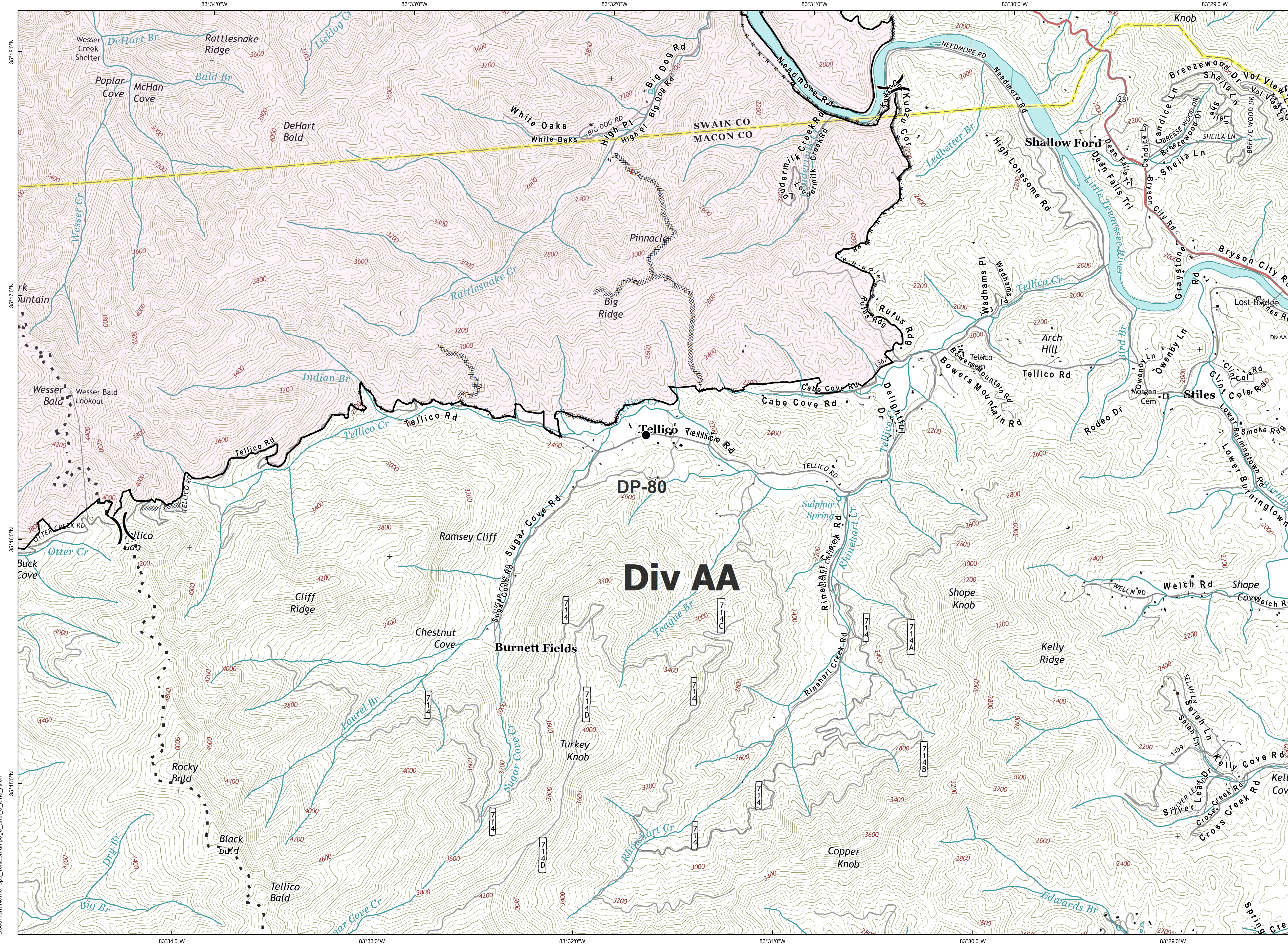


- Drop Point
- Fire Origin
- Water Source
- Division Break
- Completed Line
- Road as Completed Line
- Completed Dozer Line
- Hand Line
- Planned Fire Line
- Wildfire Daily Fire Perimeter
- Structures
- Trail of Tears



Information shown is based on the best available data at the time of map production.

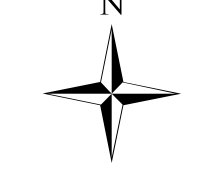
Document Name: ops_tellicoMultipage_ans1_d_land_Allen


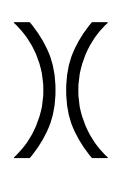


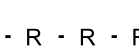

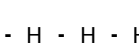

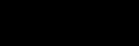




Tellico

**Branch III
Div AA
IAP Tiles**

11/26/2016
Day Shift



-  Drop Point
 -  Division Break
 -  Uncontrolled Fire Edge
 -  Completed Line
 -  Road as Completed Line
 -  Completed Dozer Line
 -  Hand Line
 -  Wildfire Daily Fire Perimeter
 -  Structures
 -  Trail of Tears
- 750 foot buffer - total width of 1,500 feet
- Download a GeoPDF
- 
- 0 1,000 2,000
Feet

Information shown is based on the best available data at the time of map production.

M. Dodd, GISS
Time: 10:16:04 PM
Date: 11/25/2016
Datum: North American 1983

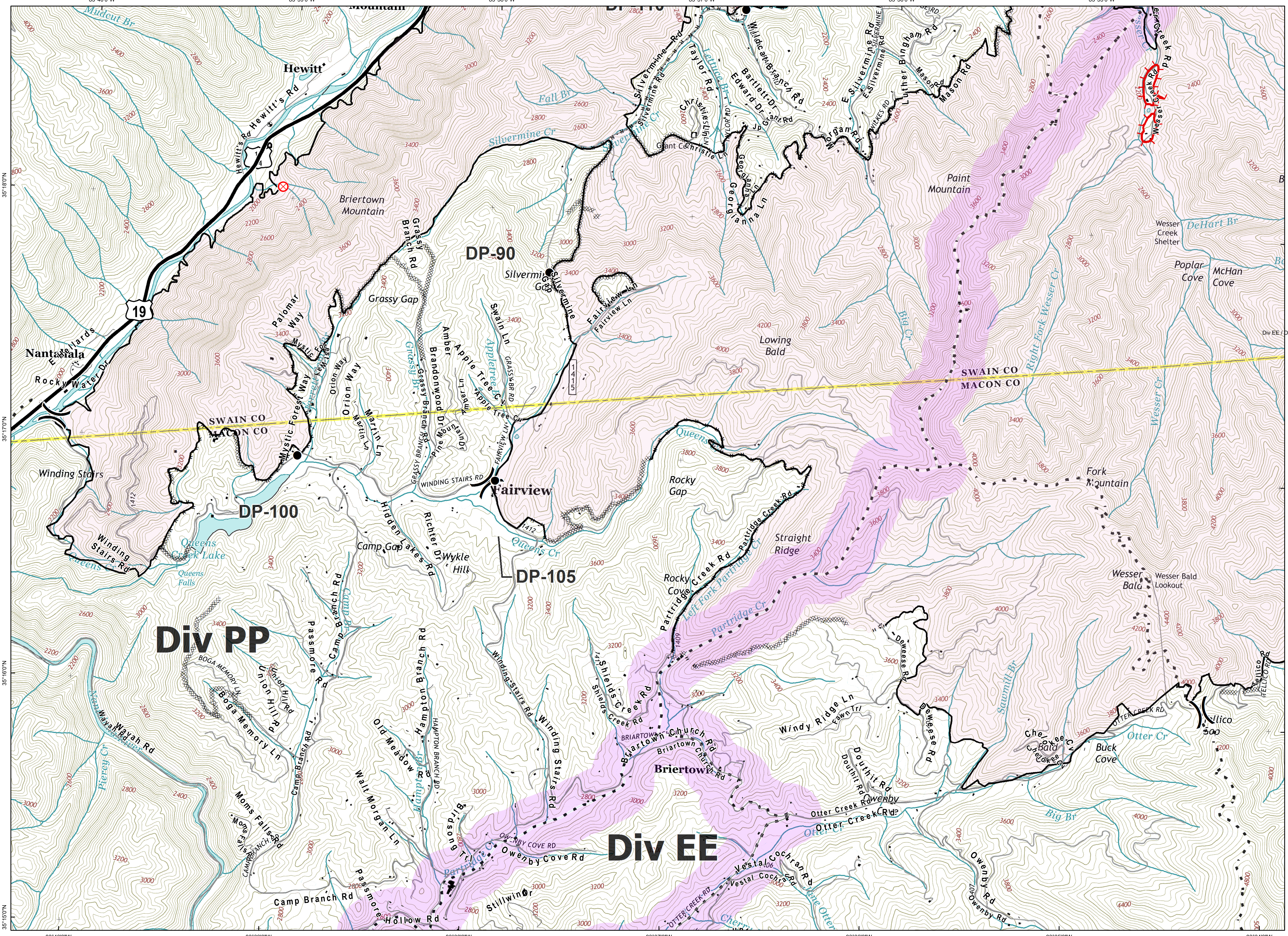
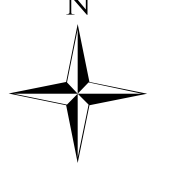
Document Name: ops_tellicoMultipage_ans1_d_land_Allen



Tellico

Branch III
Div EE / Div PP
IAP Tiles

11/26/2016
Day Shift



- Drop Point
- Fire Origin
- Division Break
- Uncontrolled Fire Edge
- Completed Line
- Road as Completed Line
- Completed Dozer Line
- Hand Line
- Wildfire Daily Fire Perimeter
- Structures
- Trail of Tears
750 foot buffer - total width of 1,500 feet

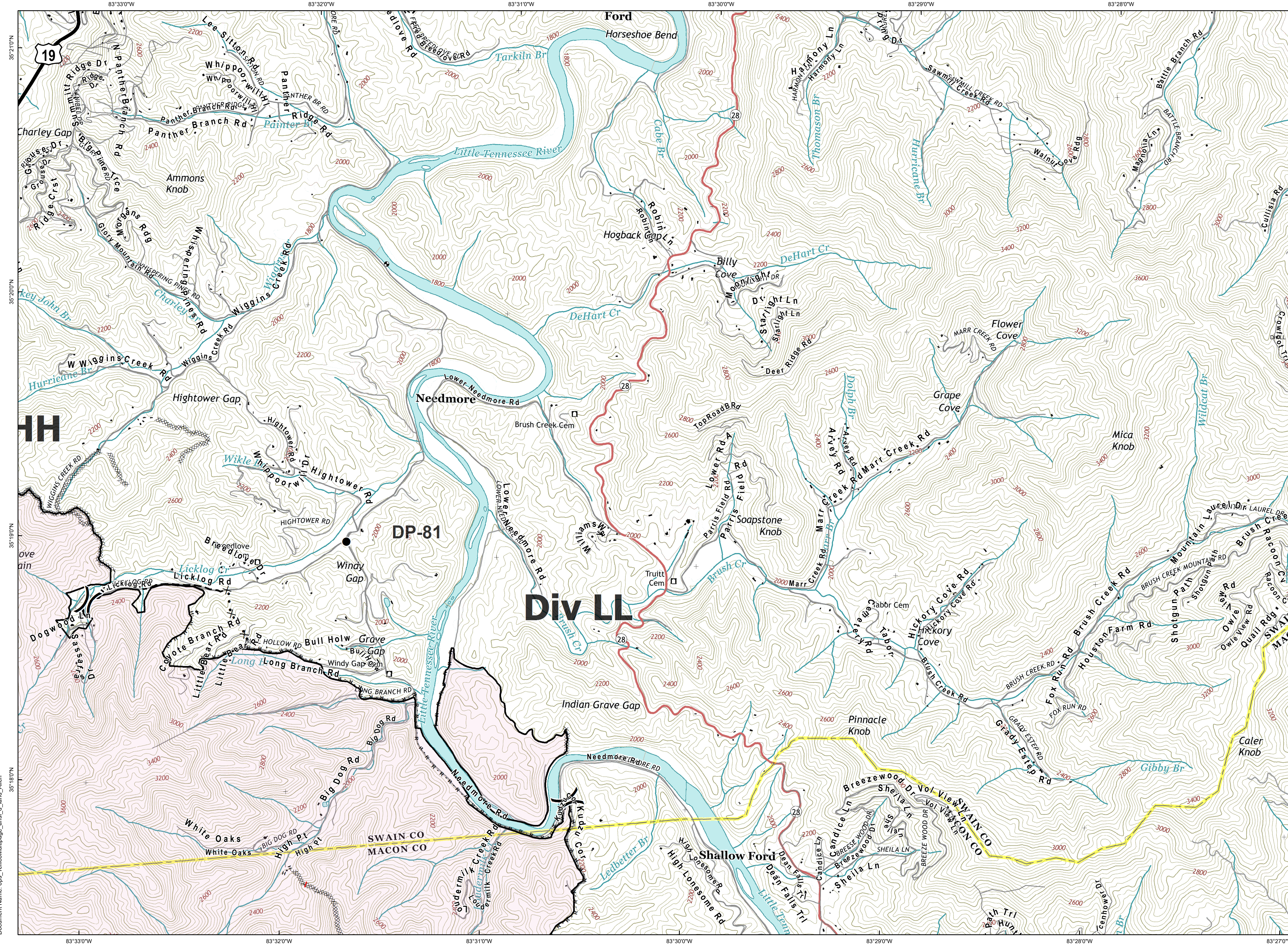


0 1,000 2,000
Feet

Information shown is based on the best available data at the time of map production.

M. Dodd, GISS
Date: 11/25/2016
Datum: North American 1983

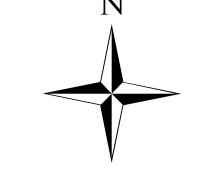
Document Name: ops_tellicoMultipage_ansi_d_land_Allen





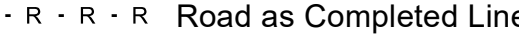
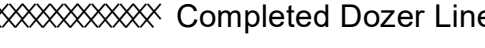



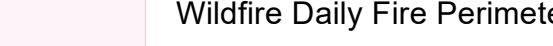
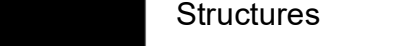
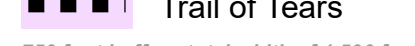


Tellico

**Branch III
Div LL
IAP Tiles**


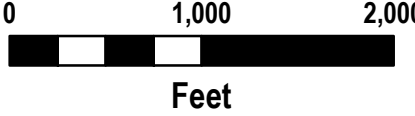
11/26/2016
Day Shift



-  Drop Point
-  Division Break
-  Uncontrolled Fire Edge
-  Completed Line
-  R · R · R · R Road as Completed Line
-  Completed Dozer Line
-  H · H · H · H Hand Line
-  Proposed Dozer Line
-  Planned Fire Line
-  Wildfire Daily Fire Perimeter
-  Structures
-  Trail of Tears

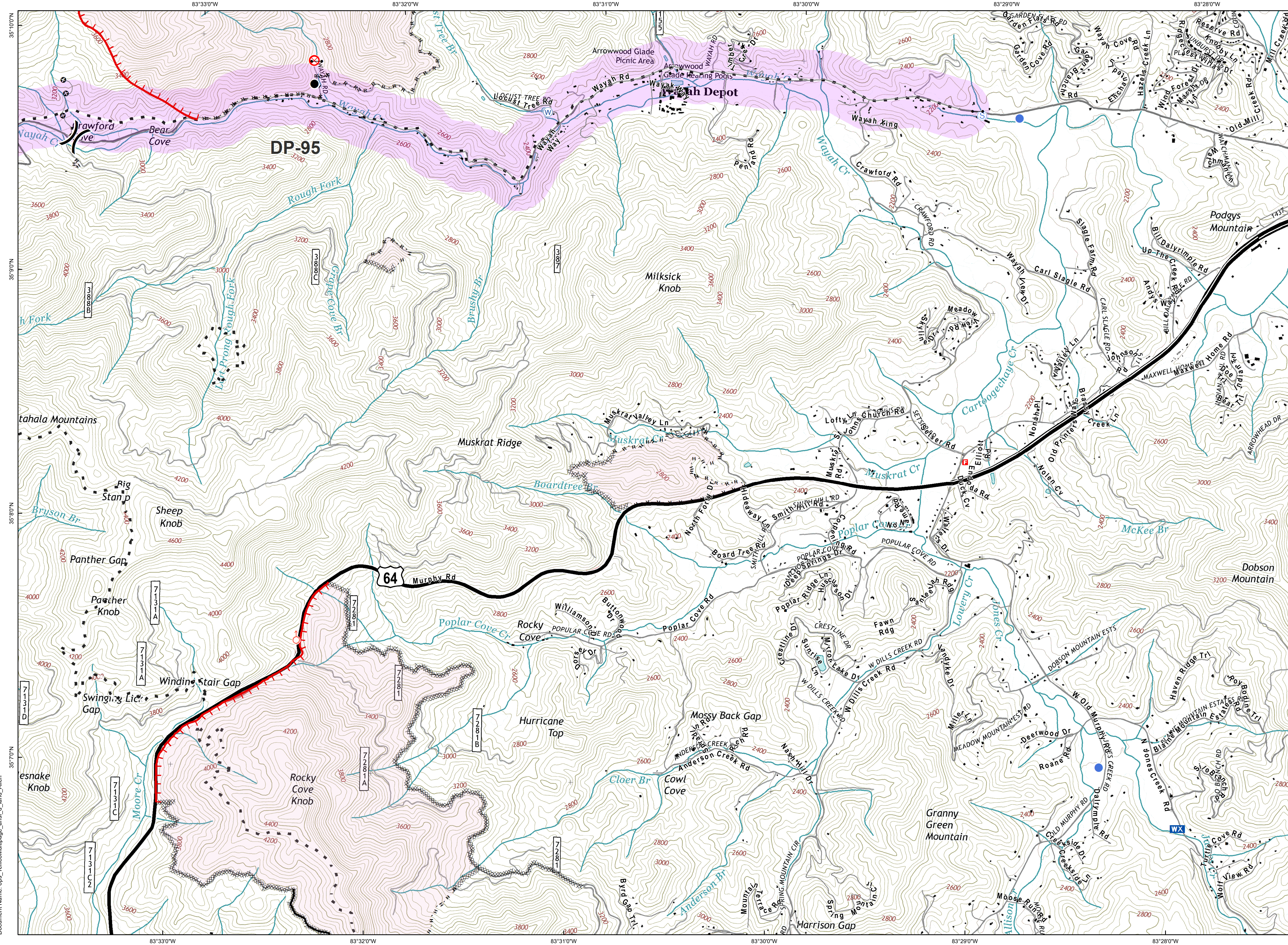
750 foot buffer - total width of 1,500 feet

Download a GeoPDF

Information shown is based on the best available data at the time of map production.

Document Name: ops_tellicoMultipage_ans1_d_land_Allen

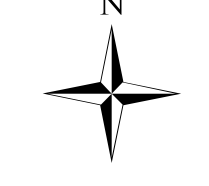


Muskrat

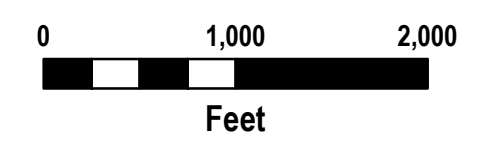
Branch III

IAP Tiles

11/26/2016
Day Shift



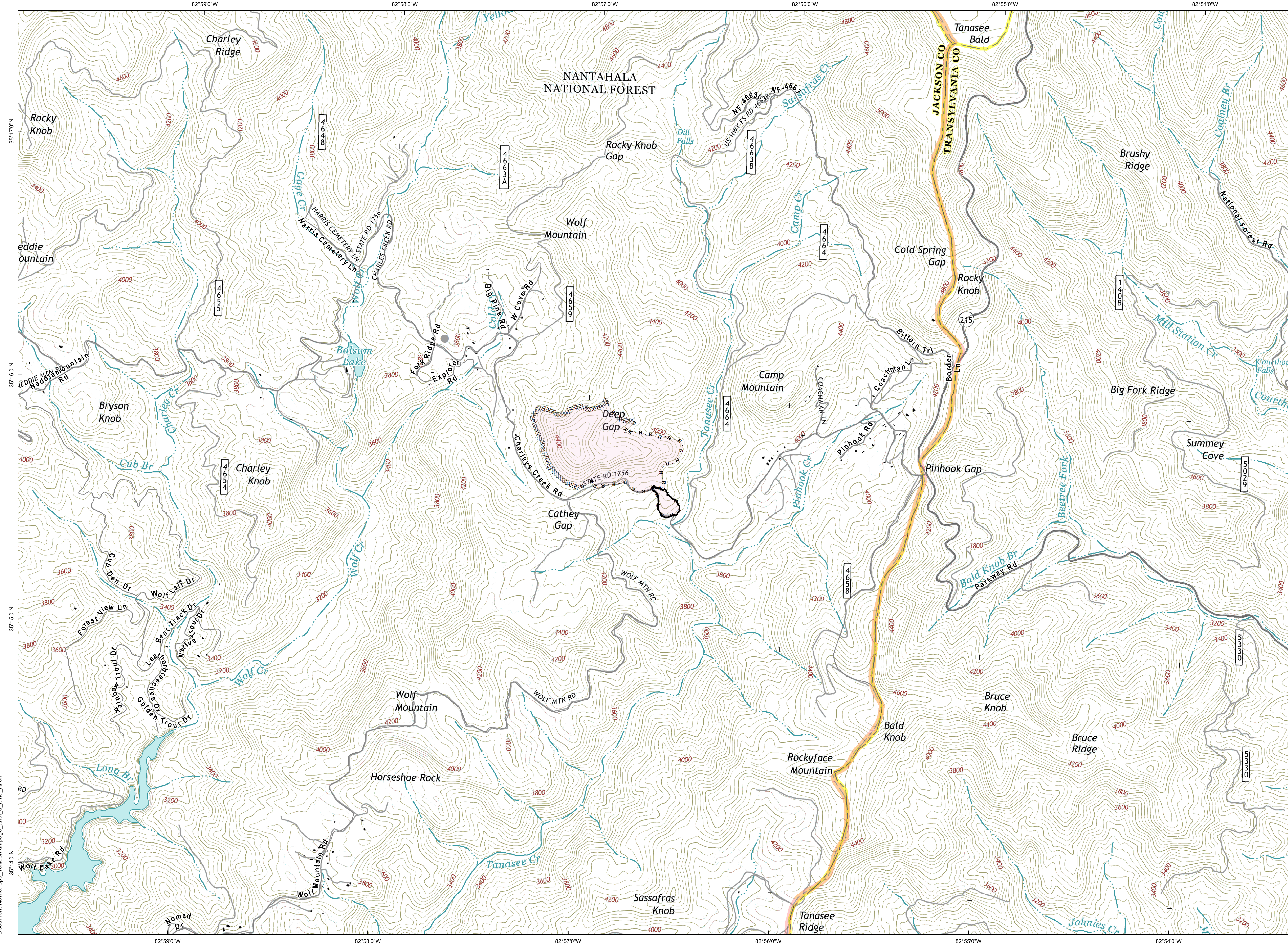
- Drop Point
- Fire Origin
- Gate
- Helispot
- Mobile Weather Unit
- Spot Fire
- Staging Area
- Water Source
- Division Break
- Uncontrolled Fire Edge
- Completed Line
- Road as Completed Line
- Completed Dozer Line
- Hand Line
- Ridge/Geographic Feature
- Other
- Wildfire Daily Fire Perimeter
- Structures
- Trail of Tears



Information shown is based on the best available data at the time of map production.

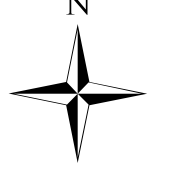
M. Dodd, GIS
 Date: 11/25/2016
 Datum: North American 1983

Document Name: ops_tellicoMultipage_ans1_d_land_Allen



**Cathy Gap
Branch III
IAP Tiles**

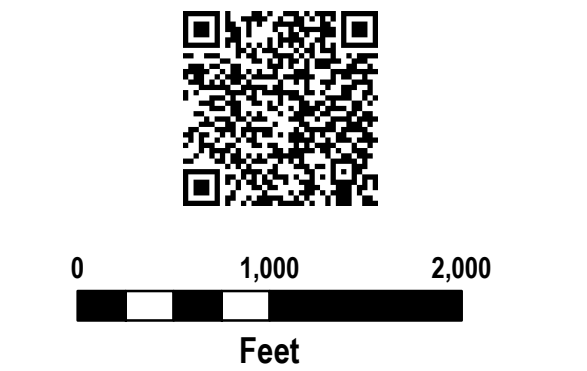
11/26/2016
Day Shift



- Other
- Completed Line
- R · R · R · R Road as Completed Line
- XXXXX Completed Dozer Line
- H · H · H · H Hand Line
- Wildfire Daily Fire Perimeter
- Structures
- Trail of Tears

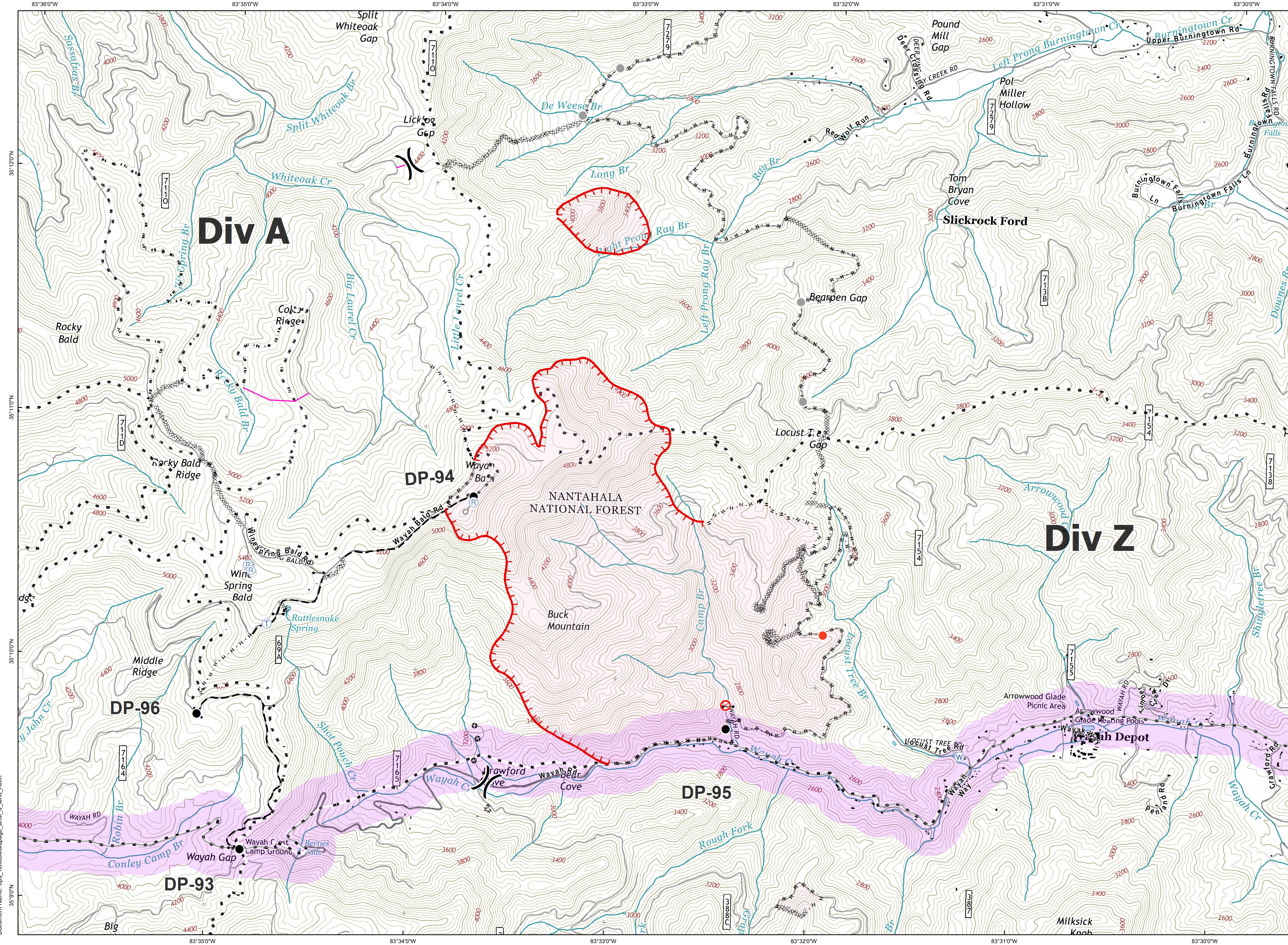
750 foot buffer - total width of 1,500 feet

Download a GeoPDF



Information shown is based on the best available data at the time of map production.

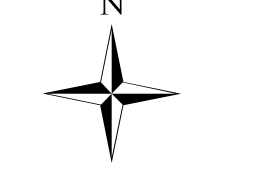
Document Name: ops_tellicoMultipage_ansi_d_land_Allen



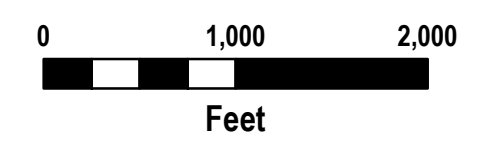
Camp Branch Branch II

IAP Tiles

11/26/2016
Day Shift



- Drop Point
- Fire Origin
- Gate
- Hot Spot
- Repeater
- Telephone
- Water Source
- Other
- Division Break
- Uncontrolled Fire Edge
- Road as Completed Line
- Completed Dozer Line
- Hand Line
- Planned Fire Line
- Other
- Unknown
- Wildfire Daily Fire Perimeter
- Structures
- Trail of Tears
750 foot buffer - total width of 1,500 feet



Information shown is based on the best available data at the time of map production.