



Approximate  
Acreage:  
1,483



- Drop Point
- ⊗ Fire Origin
- Gate
- Hot Spot
- Ⓡ Repeater
- ) Division Break

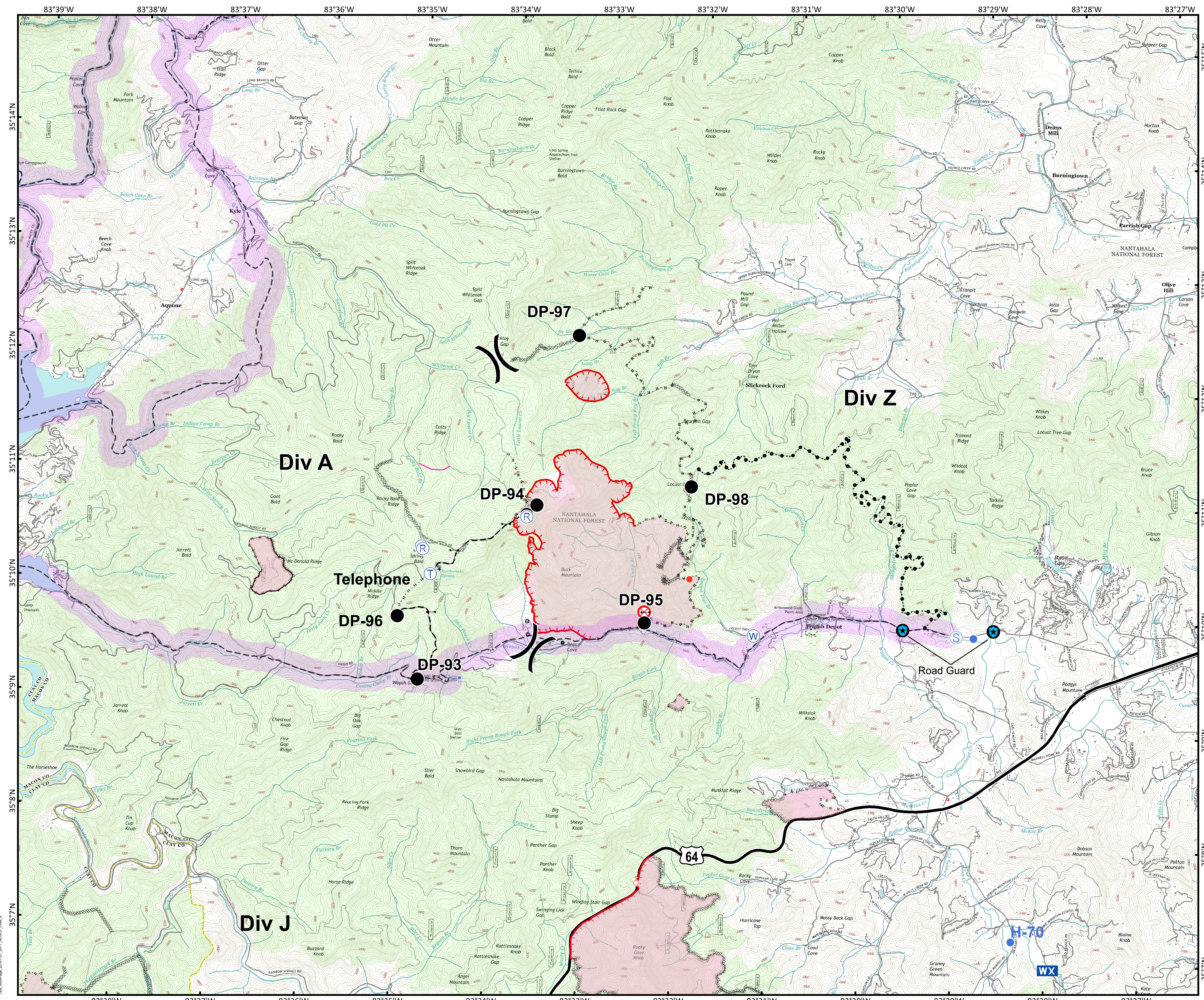
- Trail of Tears
- 1,500 foot Buffer
- Uncontrolled Fire Edge
- R-R Road as Completed Line
- XXXX Completed Dozer Line
- Hand Line
- Planned Fire Line
- Fire Perimeter
- Structure



0 0.25 0.5 1 Miles

Information shown is based on the best available data at the time of map production.

Datum: North American 1983  
Units: Foot US  
Author: Blue Team GIS



Ops\_MapPage\_20161127\_2017\_NCFE\_Fire\_E