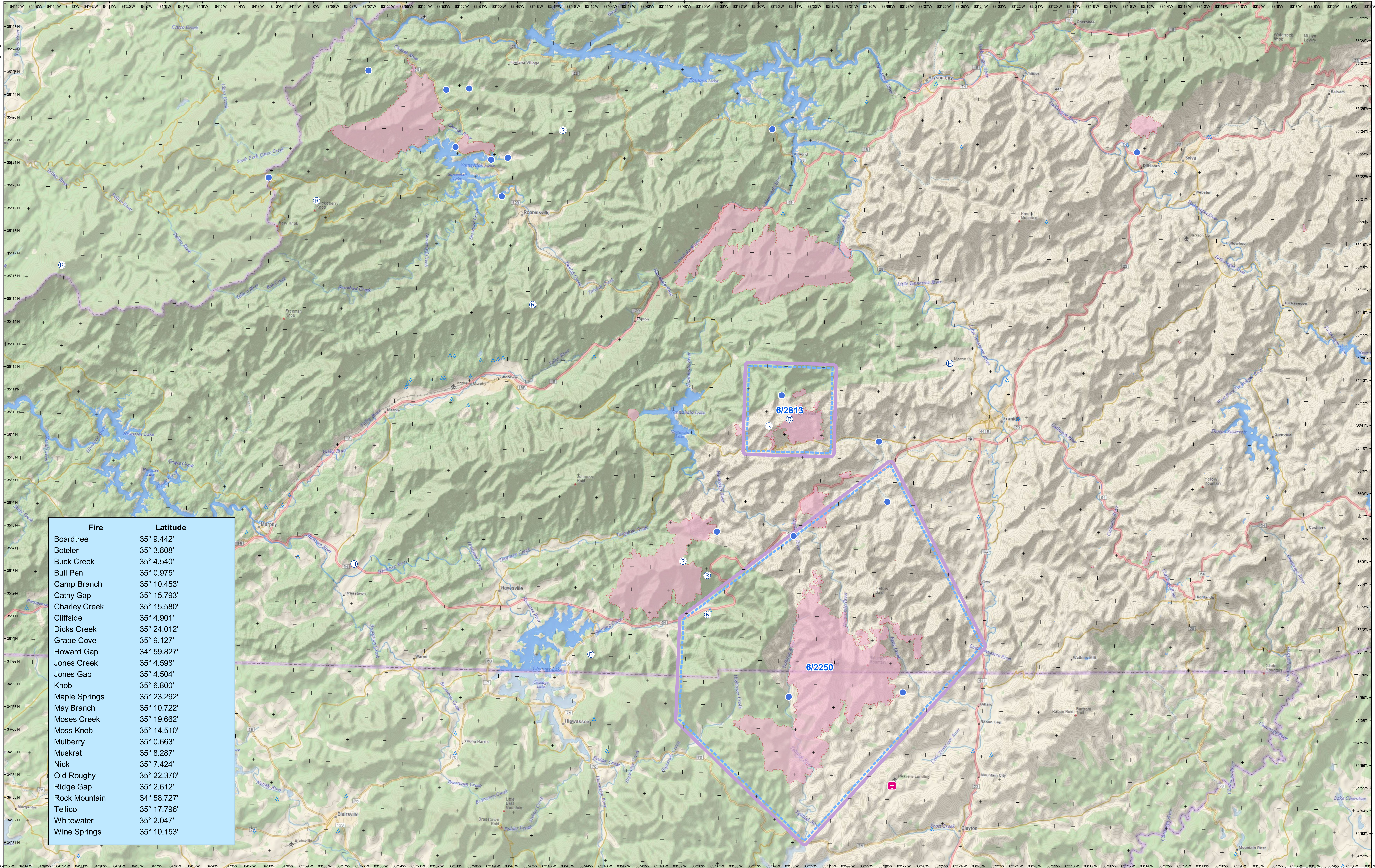




Fire	Latitude
Boardtree	35° 9.442'
Botler	35° 3.808'
Buck Creek	35° 4.540'
Bull Pen	35° 0.975'
Camp Branch	35° 10.453'
Cathy Gap	35° 15.793'
Charley Creek	35° 15.580'
Cliffside	35° 4.901'
Dicks Creek	35° 24.012'
Grape Cove	35° 9.127'
Howard Gap	34° 59.827'
Jones Creek	35° 4.598'
Jones Gap	35° 4.504'
Knob	35° 6.800'
Maple Springs	35° 23.292'
May Branch	35° 10.722'
Moses Creek	35° 19.662'
Moss Knob	35° 14.510'
Mulberry	35° 0.663'
Muskrat	35° 8.287'
Nick	35° 7.424'
Old Roughy	35° 22.370'
Ridge Gap	35° 2.612'
Rock Mountain	34° 58.727'
Tellico	35° 17.796'
Whitewater	35° 2.047'
Wine Springs	35° 10.153'



- Airstrip or Airport
- Helibase
- Helispot
- Repeater
- TFR
- Fire Perimeter

Spatial Reference and Scales
D_North_American_1983
1 inch = 1.48 miles
1:93,925

